

Cancellations on Issues of Hong Kong Queen Victoria 2 Cents after 1900



Purpose and treatment of Exhibit

When a definitive series is the subject of study, the lower values are often ignored in favour of the higher values; this no doubt reflects the fact that the higher values are usually less used and are more often found on covers to foreign destinations paying specific postage rate. The 2 cents value was multi-purpose; it was intended for local letter, printed matter and as a make-up value.

The exhibit shows various cancellations & markings on the Hong Kong Queen Victoria 2 cents stamps after 1900. The cancellations & markings range not only from post offices in Hong Kong and various treaty ports in China, but also with security markings, ship letter markings and arrival cancellations thus illustrating the multi-function of this value. It also showed some interesting mixed use with King Edward VII stamps during this period. Production and design of the stamps is NOT in the scope of this exhibit.

Cancellations in each section are arranged in Types chronologically by reference to the classification of Webb¹. Earliest recorded dates ("ERD") and latest ("LRD") dates are based on published books and personal research.

Rarity

Some of the cancellations on the 2 cents stamp shown in the exhibit are not known on any other values. Important items are framed red.

Plan of Exhibit

This exhibit is divided into 4 sections:

1. Introduction
2. Hong Kong Post Offices
3. Treaty Port Post Offices in China
4. Other Markings (Chinese Imperial Post Office, Ship Letter Markings & Arrival Cancellations)

Reference

1. F. W. Webb: *The Philatelic and Postal History of Hong Kong and Treaty Ports of China & Japan*
2. Edward Proud: *The Postal History of British Post Offices Abroad - BPO in the Far East*
3. Edward Proud: *The Postal History of Hong Kong 1841-1997*
4. Lee C. Scamp & Harmon K. Fine: *Hong Kong Arrival Markings*
5. Ming W. Tsang: *Hong Kong Security Markings*
6. Hong Kong Security Markings Study Group: at their website (www.rodsell.com/hksmsic)
7. R. Kirk: *British Maritime Postal History Volume 2 – The P&O Lines to the Far East*
8. On-line Hong Kong Daily Press shipping reports (mmis.hkpl.gov.hk)
9. R. Salles: *La Poste Maritime Francaise, Tome V -- Hong-Kong - Shanghai - Yokohama – Kobe*

2. HONG KONG POST OFFICES

POST-ADHESIVE CIRCULAR DATED STAMPS

Type D: 20.5mm c.d.s., HONG-KONG with date and index A, B, C, D, E, F; 3mm letters.

Index A, B, C: ERD 12 Jul 1893, LRD 2 Jan 1903, Index D, E, F: ERD 19 Jul 1893, LRD 7 July 1898



1901 (Jan 5) Hong Kong postcard, carried by British Packet *P&O Bengal* to Colombo, *P&O Victoria* to Port Said, *P&O Isis* to Brindisi then overland to Torino, Italy. Franked by two 2c. stamps, cancelled by Hong Kong Type D c.d.s., paying 4c. postcard rate to Italy. Arrival Torino c.d.s. (02.02.1901).



1901 (May 10) Hong Kong letter, carried by British Packet *P&O Ballarat* to Colombo, *P&O Rome* to Port Said, *P&O Isis* to Brindisi then overland and channel ferry to England. Franked by two 2c. stamps, cancelled by Hong Kong Type D c.d.s., paying 4c. letter rate to United Kingdom. Arrival Bury St. Edmunds c.d.s. (10.06.1901).

Type G: 21.5, 22, 22.5, 23mm c.d.s., HONG-KONG, with date and index letters A, B, C, D, E, F; 3mm letters.

ERD 14 Jul 1899, LRD on QV 12 Sep 1903.



No Index



Index A



Index B



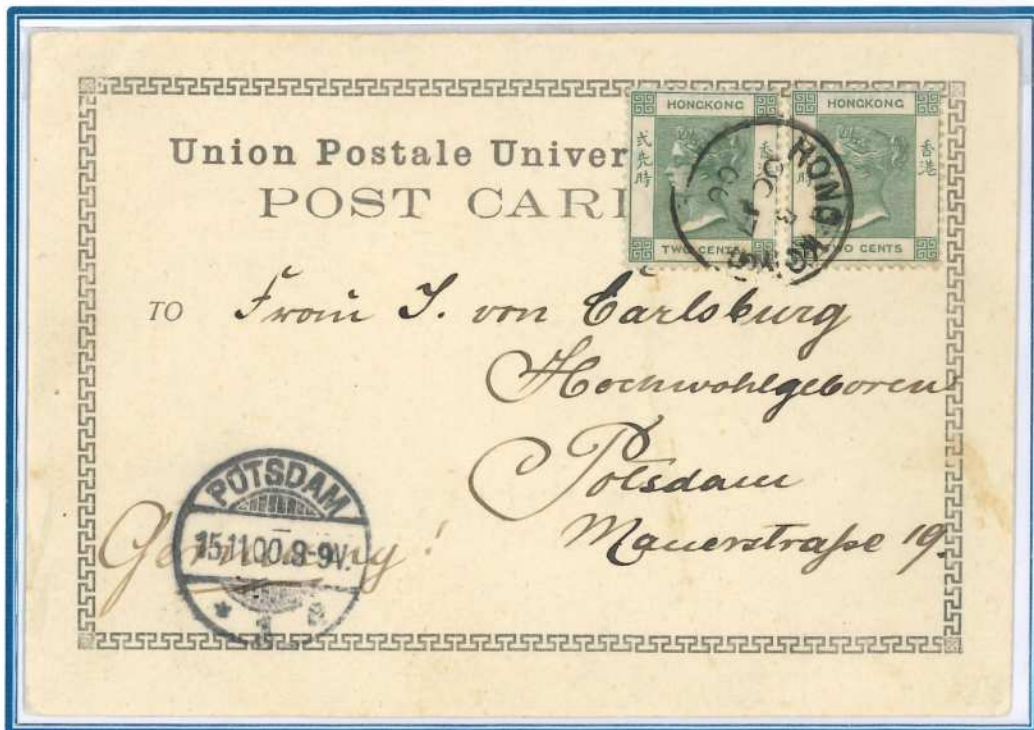
Index C



Index D



Index E



1900 (Oct 17) Hong Kong postcard, carried by German Packet *Norddeutscher Lloyd SS Sachsen* to Naples via Tuticorin, then overland to Potsdam.

Franked with two 2c. stamps, cancelled by Hong Kong Type G c.d.s., paying 4c. postcard rate to Germany. Arrival Potsdam c.d.s. (15.11.1900).



1900 (Aug 26) Hong Kong letter, carried by French Packet *MM Ernst Simons* #7 to Marseille, then overland and channel ferry to England. Franked with two 2c. stamps, cancelled by Hong Kong Type G c.d.s., paying 4c. letter rate to United Kingdom. Arrival Exeter c.d.s. (27.09.1900).



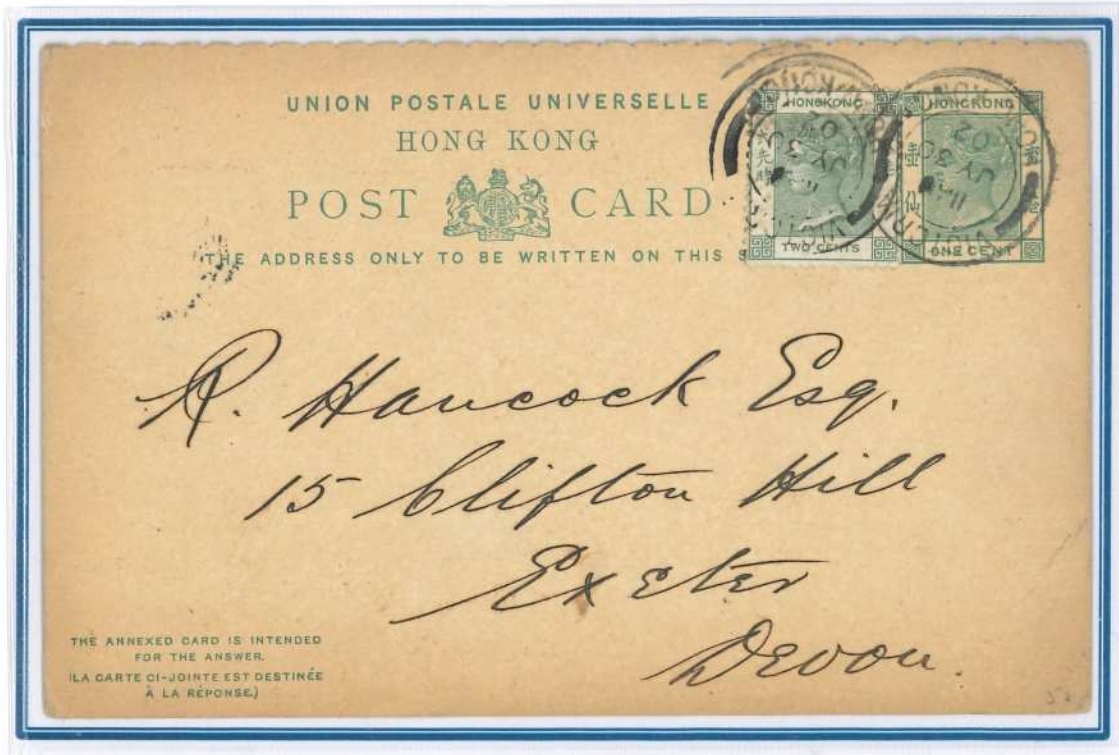
Type G (Block of 11)

Type H: GENERAL-POST-OFFICE HONG-KONG in a 25 or 25.5mm double lined circle with crosses; time and date in centre.

ERD 5 Mar 1902, LRD 19 Apr 1916



Type li: VICTORIA HONG-KONG in double-lined circle with long curved sidebars, 8.5-10mm; 24.5, 25, 25.5, 26mm diameter; time and date in centre. ERD on QV: 25 Jul 1901, LRD on QV: 11 Nov 1903



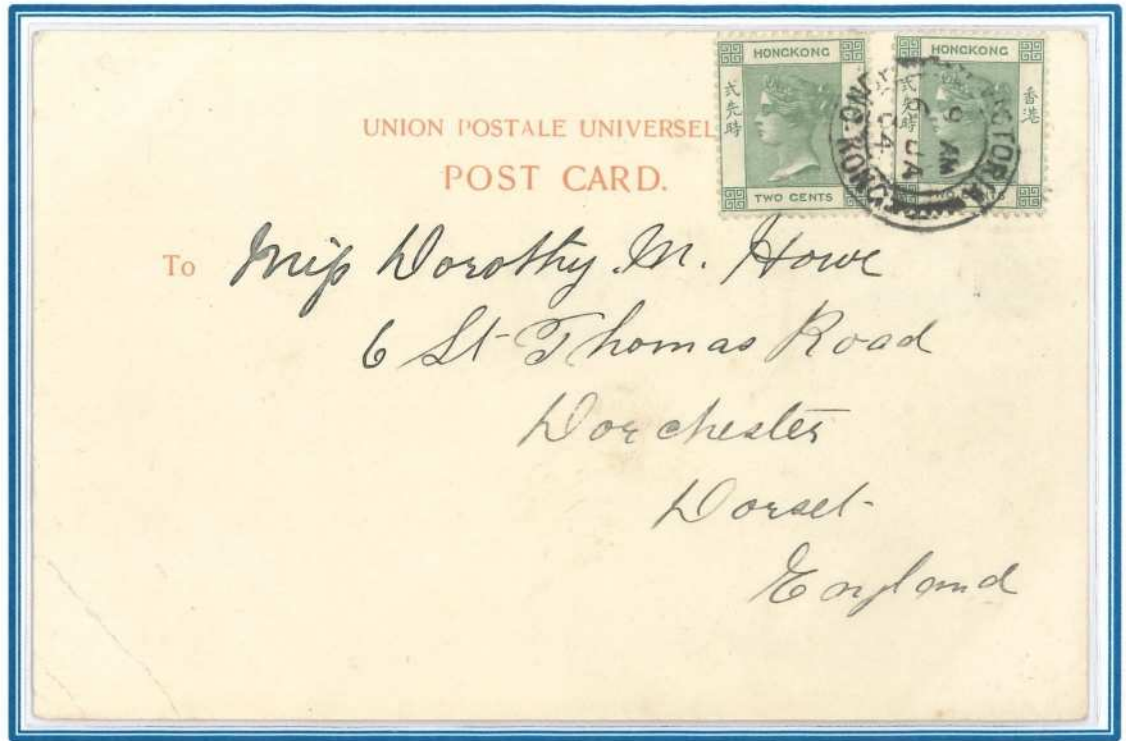
1902 (Jul 30) Hong Kong postcard, carried by British Packet *P&O Valetta* to Colombo, *P&O Victoria* to Port Said, *P&O Isis* to Brindisi, then overland and channel ferry to Exeter. Franked with two 2c. stamps, cancelled by Hong Kong Type li c.d.s., paying 4c. postcard rate to England.



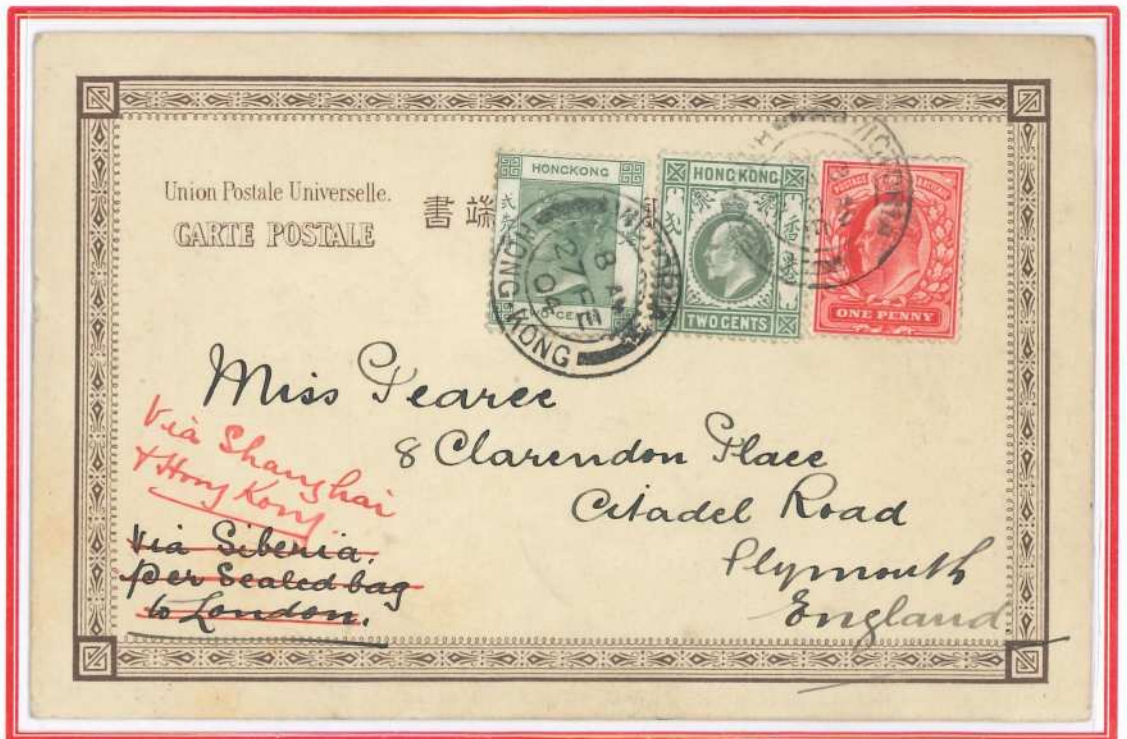
Type li with the month and date switched position



Later than LRD
30.01.1904



1904 (Jan 6) Hong Kong postcard, carried by German Packet *Hamburg-Amerika Linie SS Kiautschou* to Brindisi, then overland and channel ferry to Dorchester. Franked with two 2c. stamps, cancelled by Hong Kong Type li c.d.s., paying 4c. postcard rate to England. Later than LRD.



1904 (Feb 27) Hong Kong postcard, carried by British Packet *P&O Chusan* to Colombo, *P&O Arcadia* to Port Said, *P&O Isis* to Brindisi, then overland and channel ferry to Plymouth, England. Franked with Hong Kong QV 2c., KE 2c. and British KE 1p. stamps, cancelled by Hong Kong Type li c.d.s., paying 4c. postcard rate to England. The postcard was written on *HMS Talbot* at Chemulpo Bay in Korea on 07.02.1904. Originally, the sender planned to pass this postcard to Russian Gunboat *Krietz* at Port Arthur on 08.02.1904 and expected to deliver in sealed bag to the post office in London, which is why he placed a British KE 1p. stamp for the postage from London to Plymouth. As soon as *Krietz* went out and it met the Japanese Fleet, so it returned to her anchorage. The morning of 09.02.1904, *Krietz* returned the mail to the sender as Russo-Japanese War has been declared. *Krietz* was blown. The sender continued his way in *HMS Talbot* to Hong Kong via Shanghai and posted his postcard from Hong Kong on 27.02.1904.



1904 (May 25) Hong Kong postcard, carried by German Packet SS *Bayern* to Brindisi, then overland and channel ferry to England. Franked with 2c. stamp, cancelled by Hong Kong Type li c.d.s., underpaying 2c for 4c. postcard rate to England. Arrival Dover c.d.s. (25.06.1904). Postage Due of 1D on cover. Later than LRD.

KOWLOON BRANCH: Type B: 22/22.5mm single-lined c.d.s. with 2.5mm letters. Index A, B, C, D, E and F are known. HONG-KONG at the top, K.B. at the bottom and date in the centre. ERD: 10 Mar 1900, LRD: Jun 1915



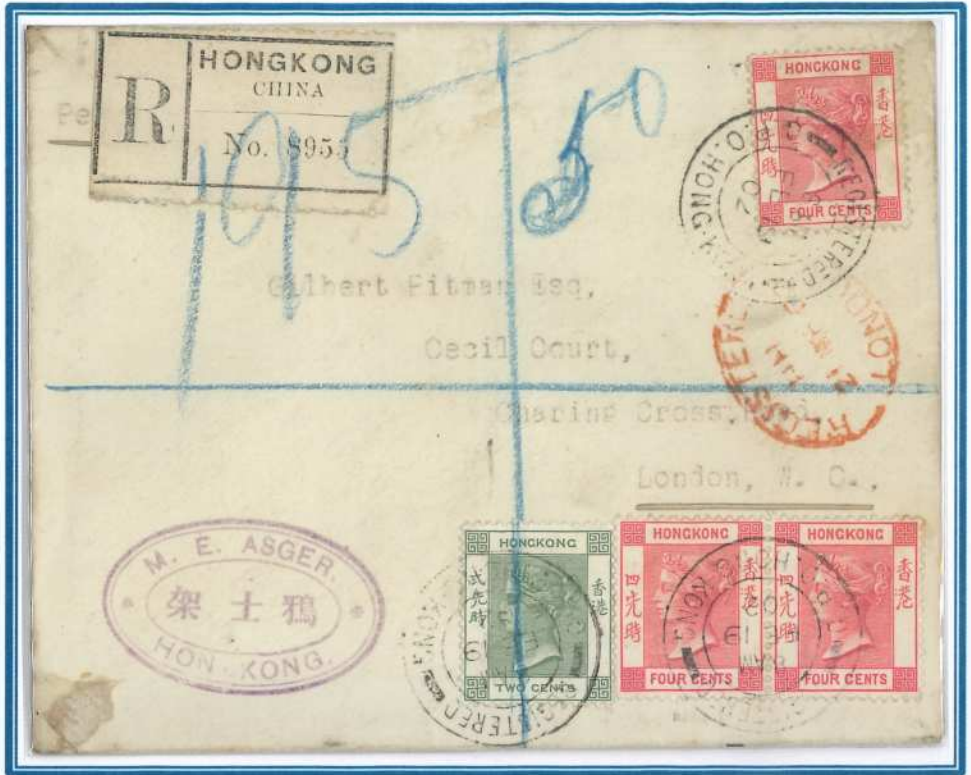
1902 (Feb 20) Hong Kong postcard sent from Hong Kong Island to Kowloon. Left General Post Office in Central at 2pm, on board the steam launch and crossed the harbour to Tsim Sha Tsui, arriving Kowloon Branch Post Office before 3pm. Thus, with the arrival cancellation of Kowloon Branch Type B c.d.s. with Index E on the cover, indicated that the mail was arrived Kowloon Branch between 2:00 – 3:30pm (HKPS Journal No.24).

Circular REGISTERED G.P.O. HONG KONG:

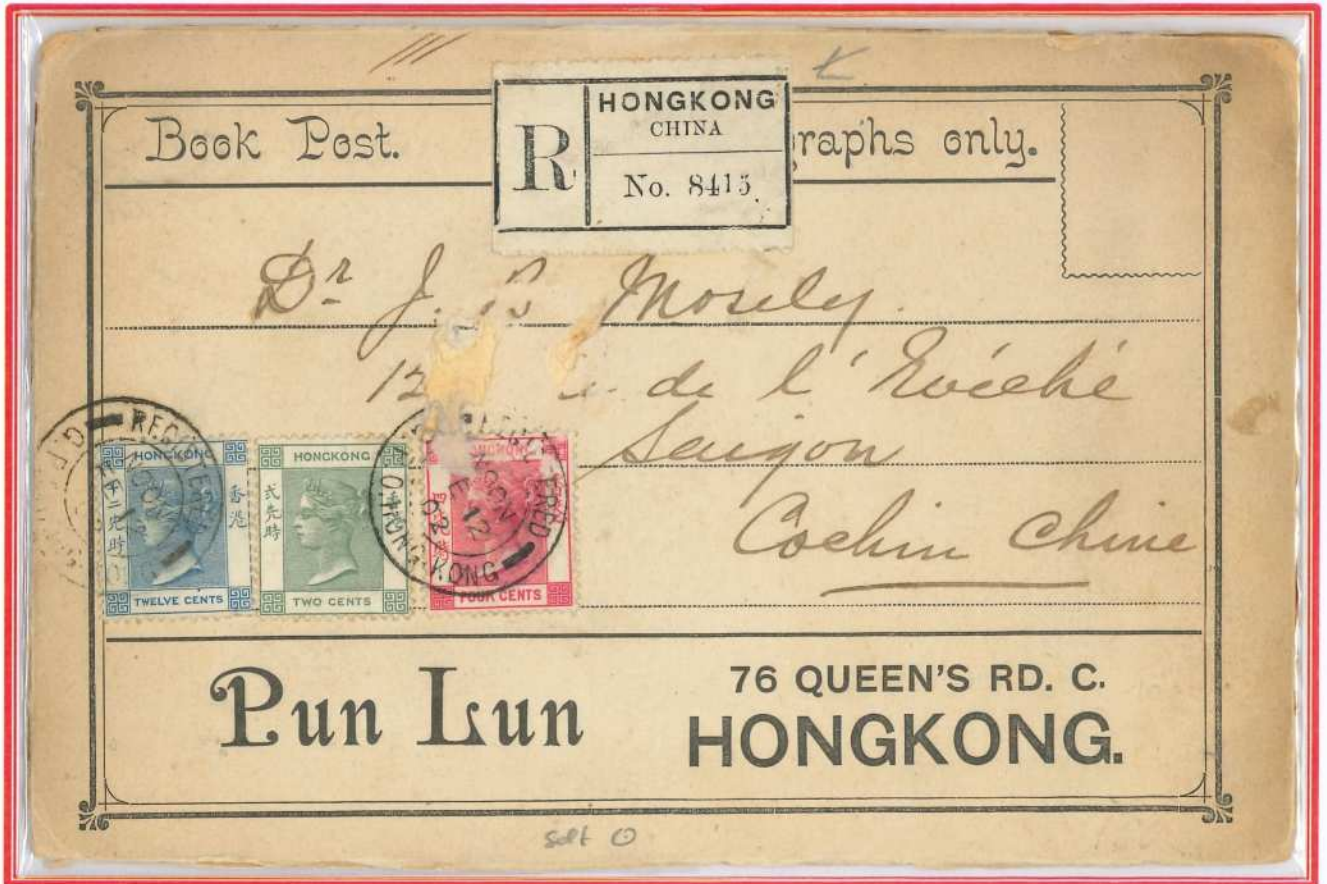
Type Rxi: double-lined circle reading REGISTERED G.P.O. HONG KONG, 25, 25.5 or 26mm. ERD: 12 Aug 1901, LRD: 5 July 1954



1902 (Feb 19) Hong Kong registered letter, carried by German Packet SS *Hamburg* to Brindisi, then overland and channel ferry to London. Franked by 2c. and three 4c. stamps, cancelled by circular registered G.P.O Hong Kong Type Rxi c.d.s., paying 14c. (7c. letter rate plus 7c. registration) to United Kingdom. Arrival London red registered oval dater (21.03.1902) on cover and arrival Oval London West Central District Post Office (W.C.D.O)



Registration mark ((21.03.1902) on the back. M.E.ASGER HONG KONG Firm chop on the cover.

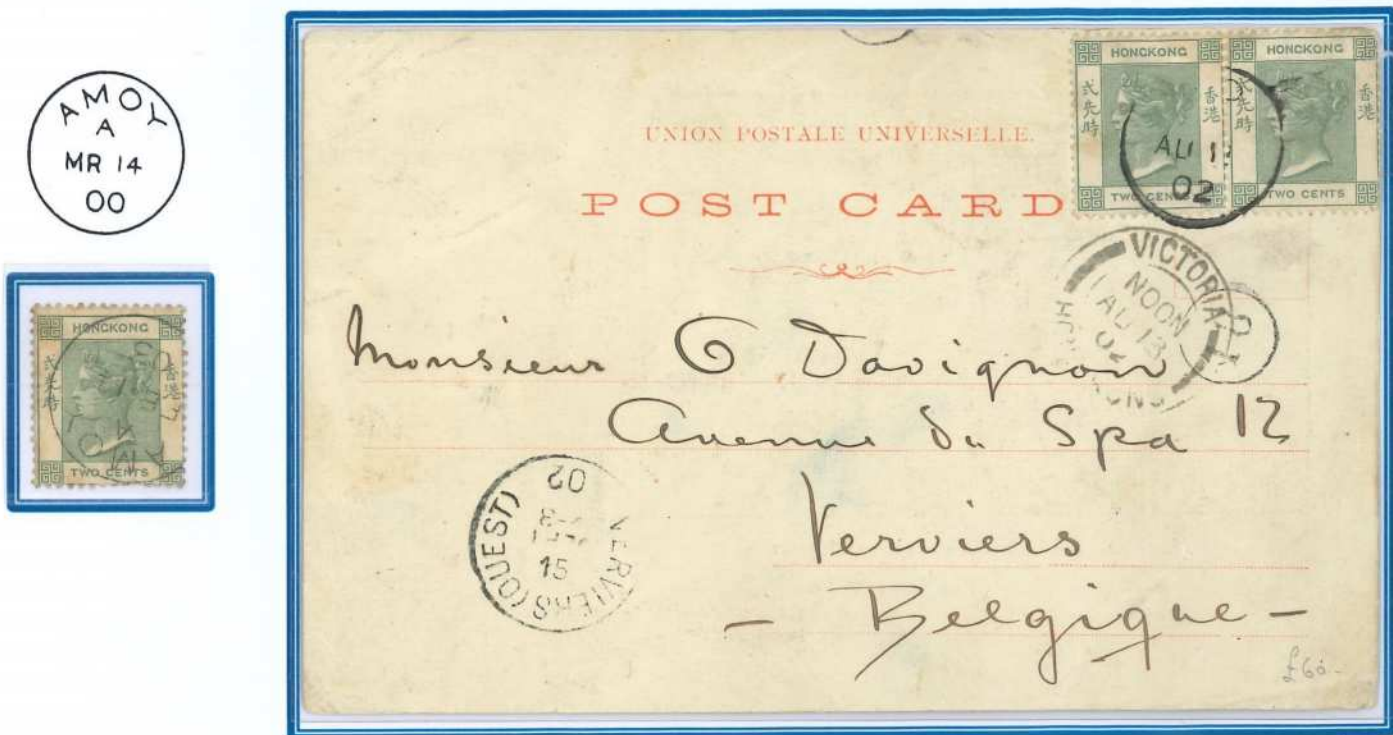


1902 (Feb 12) Hong Kong book post, carried by French Packet *MM Salazie #8* (24.02.1902) to Saigon. Franked with 2c., 4c., 12c. stamps, cancelled by Hong Kong Registered GPO Type Rxi c.d.s., paying 18c. registered (10c.) printed matter (2c. for first 50gm) with additional 20gm (6c.) rate to Saigon.

3. TREATY PORT POST OFFICES IN CHINA

AMOY

TYPE G: 21mm c.d.s., round O in AMOY; index A; wide Y (3.5mm). ERD: 7 Mar 1900, LRD: 24 Oct 1906



1902 (Aug 11) Amoy postcard, carried by British *Douglas Steamship Co. SS Haiching* to Hong Kong, British Packet *P&O Ballarat* (16.08.1902) to Colombo, *P&O Australia* to Port Said, *P&O Isis* to Brindisi, then overland to Verviers. Franked by two 2c stamp, cancelled by Amoy c.d.s. Type G, paying postcard rate to Belgium. Arrival Verviers(ouest) c.d.s. (15.09.1902). The postcard was written on 09.08.1902.

CANTON

Type D: 21.5mm c.d.s. with CANTON round the top



Type Di: index A

ERD: 18 Dec 1899

LRD on QV: 2 Oct 1903



Type Di

Type Dii: index B

ERD: 5 Jan 1900

LRD on QV: 28 Jun 1904



Type Dii

Type Diii: index B reversed

ERD: 20 March 1900

LRD on QV: 22 Dec 1902



Type Diii



1902 (Dec 3) Canton postcard, carried by British Swire & Butterfield Tientsin to Hong Kong, British Packet *P&O Parramatta* (06.12.1902) to Colombo, *P&O Australia* to Port Said, *P&O Isis* to Brindisi, then overland and channel ferry to England. Franked two 2c. stamp, cancelled by Canton Type Dii c.d.s., paying 4c. postcard rate to United Kingdom. Arrival Hong Kong Type li c.d.s (04.12.1902) and Arrival Ashford (03.01.1903). The postcard was written on 02.12.1902.

CHEFOO

Type A: Chefoo, British Post Office

25.5mm double circle c.d.s., CHEFOO, BRITISH P.O., and thick bars

ERD on QV: 3 Jan 1903 LRD on QV: 1 Nov 1904



FOOCHOW

Type B: Foochowfoo c.d.s.

19.5mm c.d.s., 2.5mm letters, index A,

lettered FOOCHOWFOO round the rim

ERD on QV adhesive: 17 Sep 1885

LRD on QV adhesive: 23 Jan 1905



Type E: Medium Foochow Round O

21mm c.d.s., 2.5mm letters, index A, 5mm from top;

FOOCHOW with round O's

ERD on QV adhesive: 6 Jan 1900

LRD on QV adhesive: 19 Apr 1904

02.07.1904 (Later than LRD)

Type K: Cancelled Handstamp

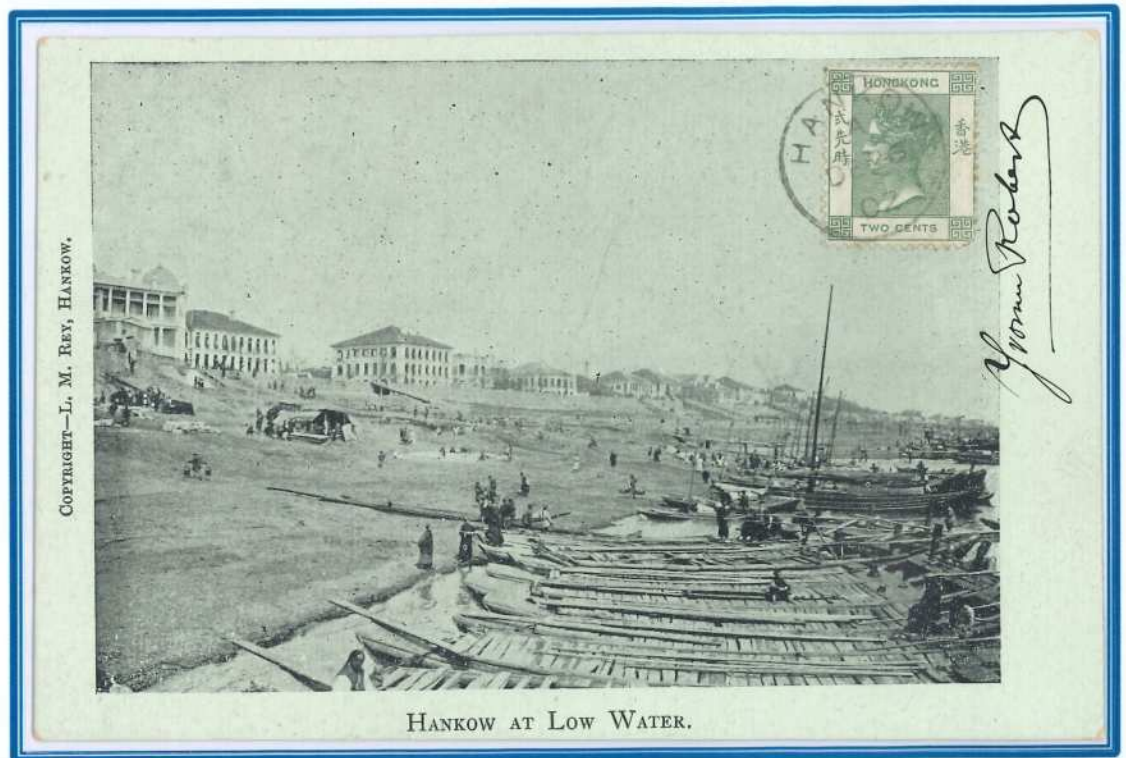
large framed handstamp (30 x 9mm) CANCELLED



HANKOW

Type Ji: ROUND O

21.5mm circle, 2.75mm letters; index A, round o, long slanting bar to K. ERD: 26 Jan 1900, LRD on QV: 29 Aug 1904



1902 (Dec 26) Hankow postcard to Paris, France. Franked by 2c. stamp, cancelled by Hankow Ji c.d.s., paying 2c. printed matter rate to France. It paid printed matter rate instead of a 4c. postcard rate because there was not any personal message on the postcard.

HOIHOW

Type F: HOIHOW WITH ROUND O

21.5mm HOIHOW; round O, 2.75mm letters; index letter C.

ERD: 2 Jan 1900, LRD: 24 Mar 1904



NINGPO

TYPE Ei: 22mm NINGPO

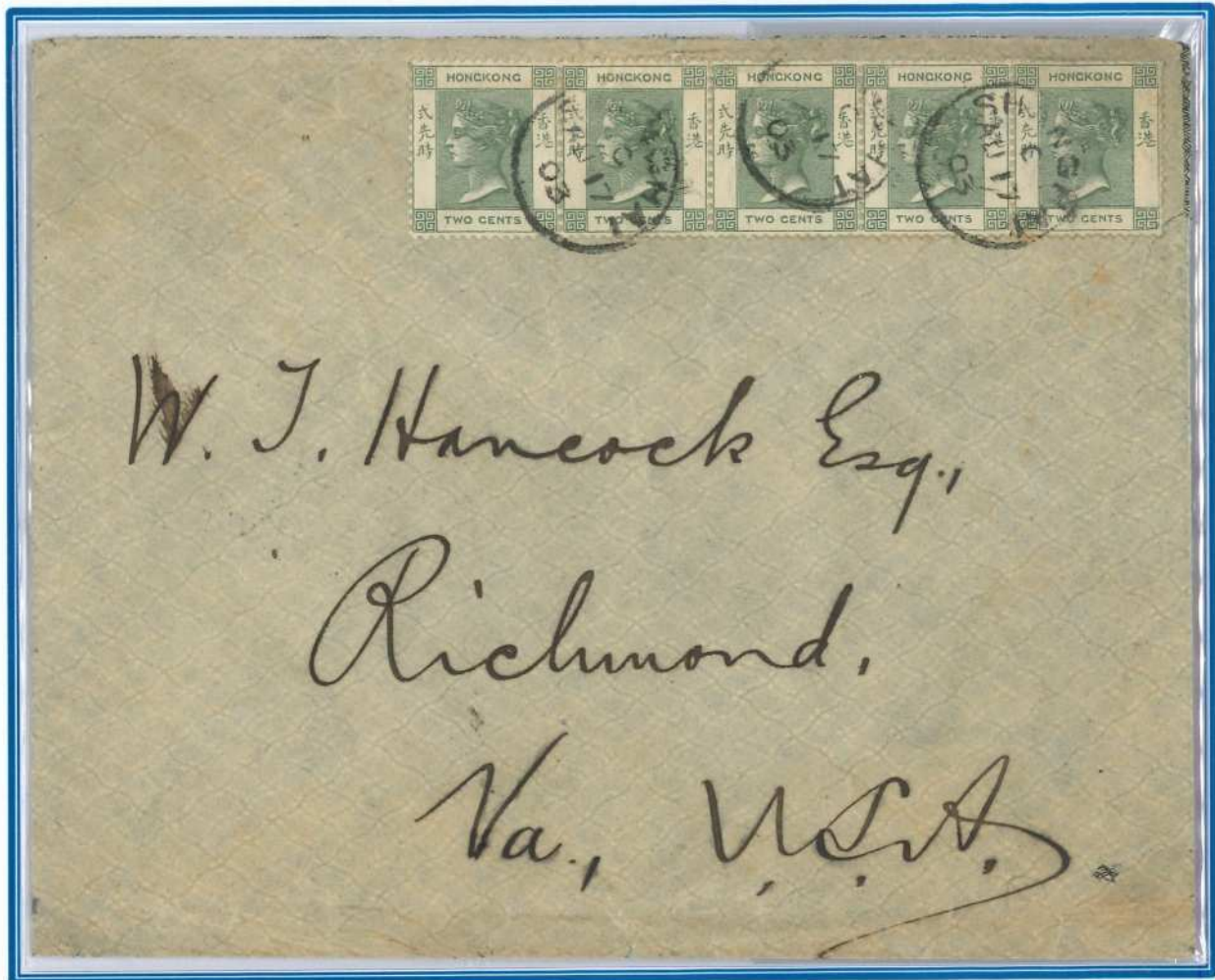
22mm c.d.s. NINGPO 3mm letters, index letter C, 6.5mm from top.

ERD on QV: 30 Dec 1899, LRD on QV: 2 Aug 1904



SHANGHAI

Type Gii: 22mm SHANGHAI, letter C, 5.5mm from top, letters 2.5mm high, squat, wide G, nearly closed. ERD: 7 Aug 1899, LRD: 10 Mar 1902



1903 (Aug 17) Shanghai letter, carried by US Packet *Toyo Kisen Kabushiki Kaisha (TKK) Hong Kong Maru* to San Francisco via Japan, then overland to Richmond (VA). Franked by five 2c. stamps, cancelled by Shanghai Type Gii c.d.s., paying 10c. letter rate to U.S.A. Arrival San Francisco c.d.s. (13.09.1903) and Arrival Richmond c.d.s. (15.09.1903). The letter was sent from P. Heath & Co. Tientsin.

Type Hi: 21.5mm SHANGHAI,

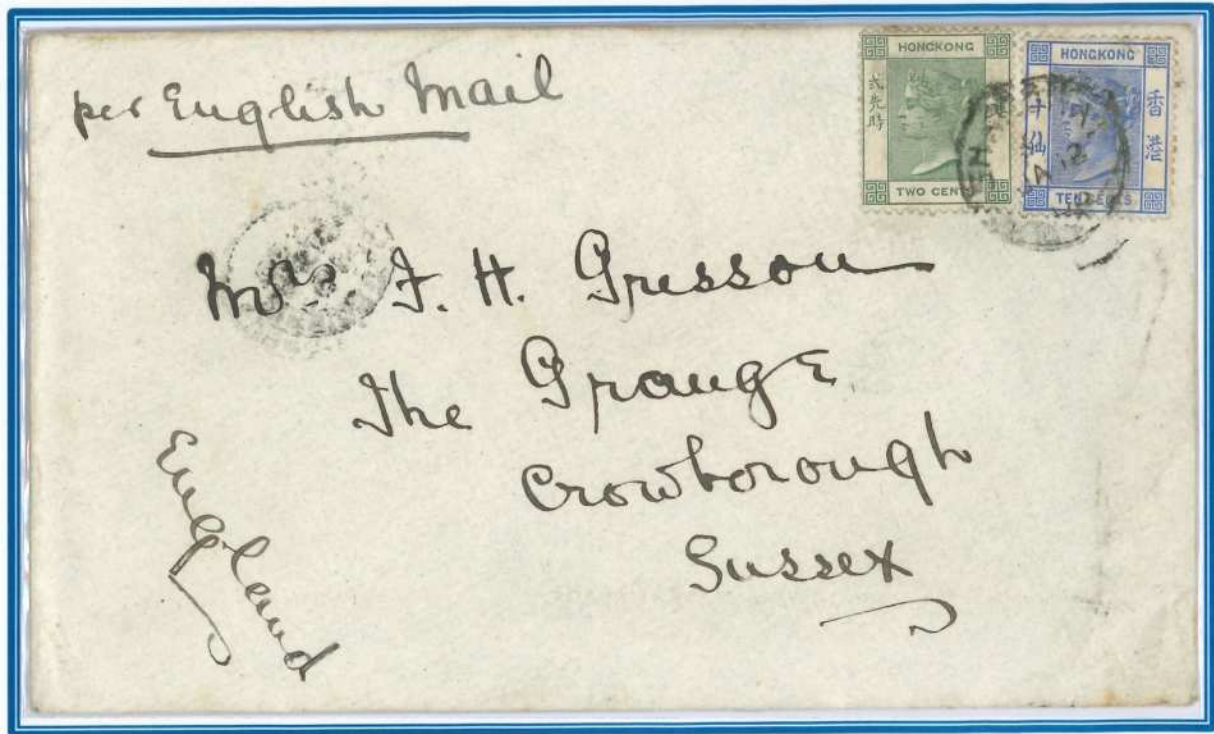
letter C, 5.5mm from top, letter 3mm high. ERD: 11 Jan 1900, LRD: 12 Sep 1904



Type I: 22mm SHANGHAI, letter C, 6mm from top, letters 3mm high, C for G. ERD: 14 Aug 1899, LRD: 6 Jun 1906



1902 (May 12) Shanghai news wrapper sending to Hamburg. Franked by Hong Kong 2c. stamp, cancelled by Shanghai Type I c.d.s., paying 2c. printed matter rate to Germany.



1903 (Jan 12) Shanghai letter, carried by British Packet *P&O Ballarat* (13.01.1903) to Columbo via Hong Kong, *P&O Britannia* to Port Said, *P&O Isis* to Brindisi, then overland and channel ferry to England. Franked by Hong Kong 2c. and 10c. stamps, cancelled by Shanghai Type I c.d.s., paying 12c. triple letter rate to United Kingdom. Arrival Tunbridge Wells c.d.s. (14.02.1903) at the back. Letter was sent by Jardine Matheson Co.

SWATOW

Type E: Swatow Star

21.5mm circle - SWATOW round the rim, index star. ERD: 12 Apr 1890, LRD: 25 Jan 1904



Half zero as year in 03
& B&Co. Security marking



Block of 4 with Half zero as year in 00

Type Fi: 22.5mm SWATOW

22.5mm c.d.s. index letter c, 6.5mm down

ERD on QV: 19 Mar 1900, LRD on QV: 3 Aug 1903



WEI HAI WEI (LIU KUNG TAU)

Type B: Small Circular Liu Kung Tau

22mm c.d.s. LIU KUNG Tau round the top, 3mm letters.

ERD on QV: 26 Sep 1901, LRD on QV: 22 Jul 1904



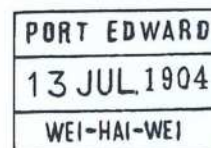
Type B



Type F: Rectangular Port Edward

28 x 19mm rectangular PORT EDWARD WEI-HAI-WEI in three lines

ERD on QV: 4 Jun 1904, LRD on QV: 9 Feb 1906



4. OTHER MARKINGS

CHINESE IMPERIAL POST OFFICE

IPO TIEPRINT

Foochow

I.P.O.



Swatow 4

I. P. O.



**PAK KUA KILLER
(CANTON)**



**BILINGUAL INTERNATIONAL DATER
(CANTON)**



SHIP LETTER MARKINGS

FRENCH MAIL BOAT

LIGNE N Type F

ERD: Dec 1887, LRD: 9 Jul 1910



YOKOHAMA A MARSEILLE LNN



GERMAN SEA POSTS

TYPE A: 30mm Deutsche Seepost, Ost Asiatische Hauptlinie. ERD: 28 Aug 1889, LRD: 13 Jan 1907



ARRIVAL MARKINGS

BRISBANE, AUSTRALIA



LONDON NORTH, ENGLAND



MACAU (Type D)



MANILA, PHILIPPINES



PENANG, STRAITS SETTLEMENT



1904 (Mar 11) Hong Kong postcard, carried by British Packet *P&O Coromandel* (12.11.1904) to Colombo, *P&O Australia* to Port Said, *P&O Isis* to Brindisi, then overland and channel ferry to England. The postcard reached Barley and then redirected to London. Franked two 2c. stamp, cancelled by Hong Kong Type li c.d.s., paying 2c. printed matter rate to United Kingdom (since there is no personal message on the postcard so it would be considered as printed letter). Arrival Barley (10.04.1904) and Arrival Royston c.d.s. (10.04.1904). The postcard was sent from *SS Eastern*.