

Newfoundland Dogs

Newfoundland postal and revenue material 1887 - 1944

Introduction

Dogs have played a big part in the Newfoundland and Labrador life, from hauling wood and supplies, transporting mail in winter, to saving lives. The big Newfoundland dogs became prize winning show dogs but were essentially working dogs along with the sled dogs and Labrador Esquimaux dogs.

Material

Stamps, plate proofs, post cards, covers, plus a rare tobacco excise stamp.



Newfoundland dog with the author's father, 1911

■ – indicates a rare item or one of particular interest

Contents

- Pages 1-4 – Newfoundland dog
 Pages 5-10 – Sled dogs
 Pages 11-12 – Labrador Esquimaux dogs
 Pages 13-15 – Newfoundland dog
 Westerland Sieger
 Page 16 – Newfoundland and
 Labrador working dogs

[Sources-The postal History of Newfoundland, Boggs; Newfoundland Air Mails 1919-1939, Harmer; The Newfoundland Specialized Stamp Catalogue, Walsh; The Story of Newfoundland, Cochrane/Parsons; Family archives, the internet, and general knowledge.]

Newfoundland Dog

1913 Tobacco Tax stamp, Type B
 1/10 lb. cut tobacco surcharge; featuring
 the Newfoundland dog from the 1887
 ½¢ postal issue; perf 12 x 12



type B: the Lower bar of F in FIFTY is equal to top bar; large serifs.

FIFTY CIGARETTES
 reading down

The first postage stamp ever to feature a dog
 Sources say it was engraved after Sir Edwin Landseer's painting
 "A Distinguished Member of the Humane Society"

These stamps came into use when newspaper rates dropped to ½¢; perf 12 x 12

1887



rose red



bottom margin inscription

1894



black



top margin inscription

1897 1¢
 local letter
 rate



*"A Distinguished Member of the Humane Society"
by Sir Edwin Landseer.*



Postcards, early 1900's.

Other sources suggest that the ½¢ dog was "Watch" from the Westerland kennels in St. John's; owned by Henry Duder, grandfather of Lt. Col. Cluny Macpherson, Newfoundland physician and inventor of the gas mask

*Re-issues from previous plates;
perf 12 x 12*

1896



orange red



pale orange red



deeper shade variation

1898



gray black



*"Westerland Watch", a Newfoundland Dog
—postcard, circa early 1900, published by Ayre and
Sons Limited, St. John's, Newfoundland*

Sled dogs

In rural and remote areas dog team was usually the best method of travel in winter; sled dogs were used to transport everything from mail to medicine

Issued for internal air mail service; featuring a bi-plane and dog team, both used to deliver mail in winter

1931



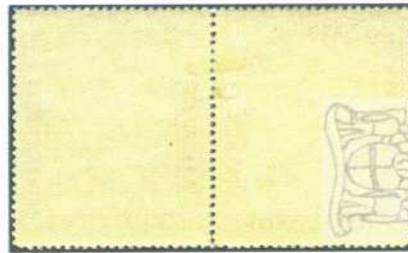
no watermark
perf 14.1 x 14.1



Coat of Arms watermark
perf 14.3 x 14.1



no watermark
perf 14.3 x 14.1



Coat of Arms
inverted watermark

scan @ 85% superimposed with
author's drawing showing
position of inverted watermark



front of se-tenant stamps
scan @ 75%



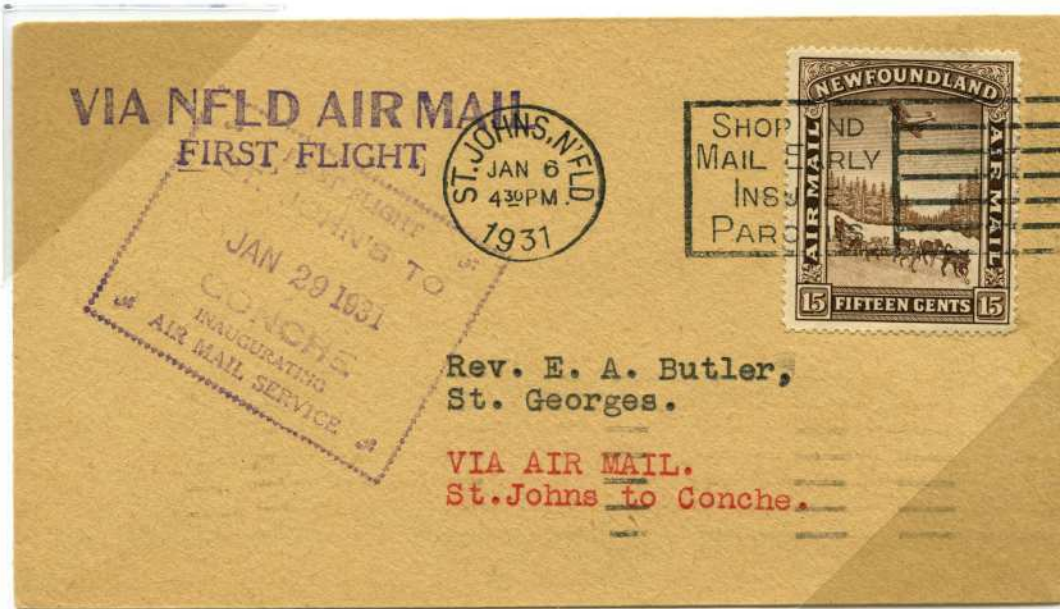
normal
water mark

WINTER TRAVEL; early 1900 postcard showing sled dogs bringing patients to one of the Grenfell Association hospitals. —Raphael Tuck & Sons Ltd.



Within Newfoundland, the 1931 air mail letter rate was 15¢; an extra 15¢ was required to return the letter to point of origin

1931



Gipsy Moth First Flight; ST. JOHN'S / CONCHE

Gipsy Moth First Flight and return; ST. JOHN'S / ST. ANTHONY / ST. JOHN'S



Sent on the Gipsy Moth First Flight ST. JOHN'S / ST. ANTHONY; an extra 50¢ (transatlantic fee) was required to forward the letter on to England

Gipsy Moth First Flight; ST. JOHN'S / ST. ANTHONY / ST. JOHN'S;
cover is signed by the pilot

1931



Gipsy Moth First Flight; ST. JOHN'S / WESTERN ARM / ST. JOHN'S



Gipsy Moth First Flight cover, ST. JOHN'S / HAMPDEN / ST. JOHN'S; due to mechanical failure it took several weeks to get the mail to Hampden

1931



Old Colony Airways; ST. JOHN'S / BURIN / ST. JOHN'S



In winter, with the bays frozen and the land covered in snow, dog teams allowed communication between outports and islands that would otherwise be isolated until spring

L & S Post

A new, higher charge to register external letters drove the cost of sending a registered letter outside Newfoundland to 15¢ (10¢ registration fee + 5¢ letter rate); to supplement the supply of 15¢ stamps, 70,000 of the 1931 airmails were overprinted to render them surface postage

Black lines obliterated the words Air Mail; L & S stands for Land and Sea; Coat of Arms watermark

1933



perf 13.8 x 13.8



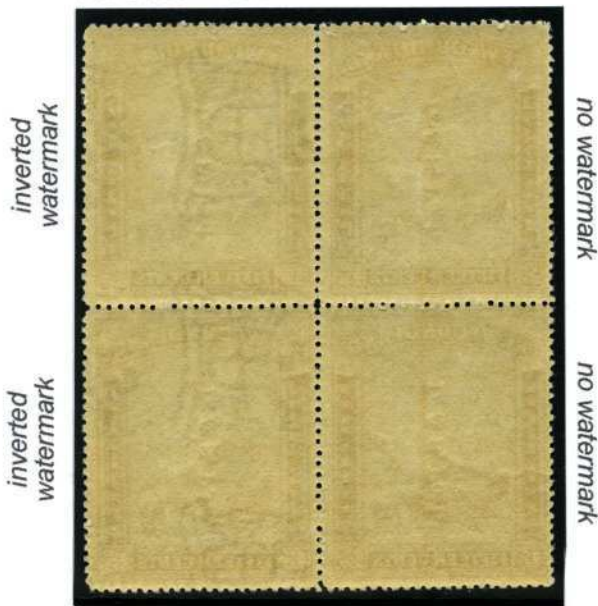
perf 14.1 x 14.1



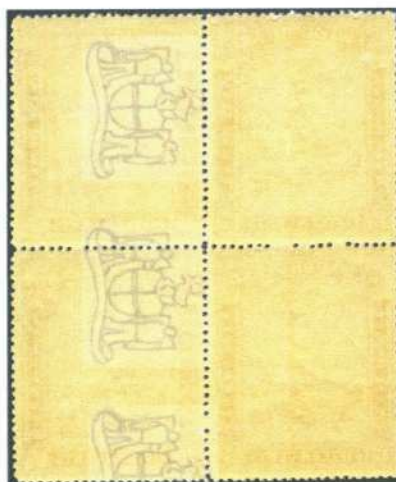
shifted overprint;
perf 14.1 x 14.1

L & S Post block of four:

inverted watermarks on both left hand stamps; no watermarks at right



perf 13.8 x 13.8



scan @ 85% superimposed with
author's drawing of positions of
inverted watermarks



scan @ 75% showing
front of stamp block

Registered First Day Cover

1933



Labrador sled dogs: —early 1900 postcard sold for benefit of the Grenfell Mission



Labrador Esquimaux dogs (sled dogs)

The Canadian Eskimo Dog is one of the rarest remaining purebred indigenous domestic canine species in North America. It is known to have been resident in the Arctic for at least 4,000 years.

Labrador Air Mail, Newfoundland's last provisional air stamps; showing alluvial gold miners with Esquimaux dogs; 8,000 were overprinted for mail sent via the Balbo 'flying boats' that left Shoal Harbour on the last leg of a return flight between New York and Portugal and Italy; Coat of Arms watermark; perf 14.3



"Esquimaux dogs" from *The Quadrupeds of North America*.

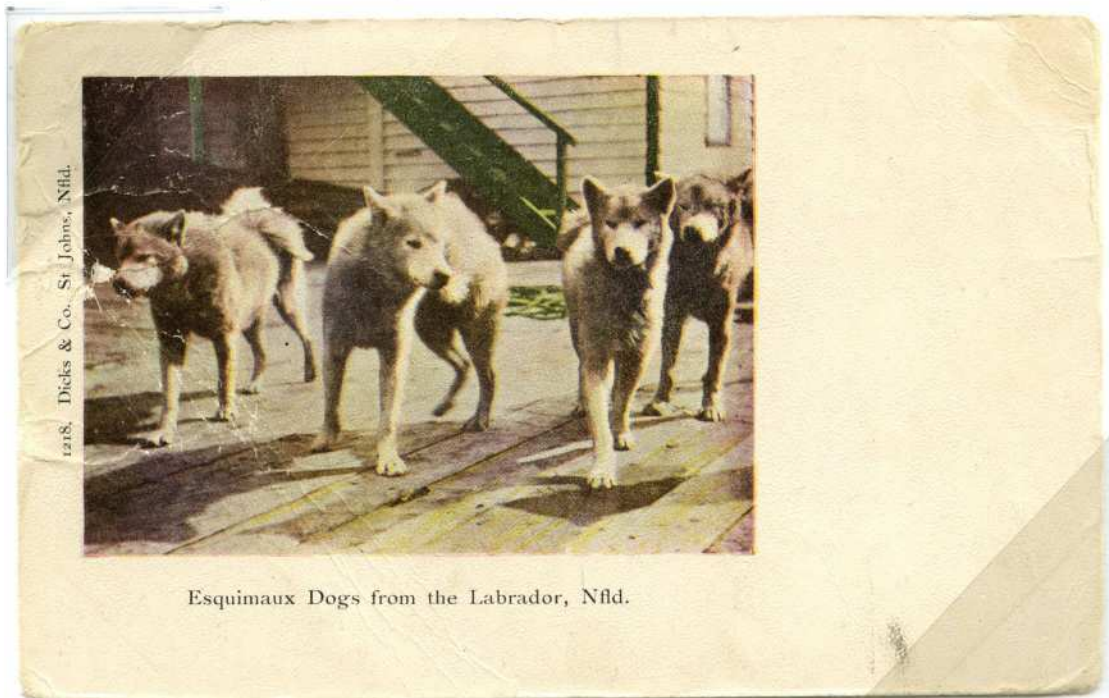
1933



stamp details showing the dogs



Hand tinted post card, circa 1905; Dicks & Co. St. John's, Nfld.



Built for hard work, these powerful and athletic Arctic dogs are also called Qimmiq (Inuit for "dog").

*Labrador Esquimaux dogs feasting on fish offal at a fish splitting table
-Postcard by Photo Gelatine Engraving Co. (PECO.)*



*Dog team; preparing to cross the frozen harbour ice, Labrador
-Early 1900s postcard, sold for the benefit of the Grenfell Mission*



Newfoundland Dog

Champion Westerland Sieger; this fine specimen of the Newfoundland Dog, raised in the Westerland kennels at St. John's, was owned by Hon. Harold MacPherson, inventor of the gas mask

1932



plate proof
on india paper

From the First Resources Issue; Coat of Arms watermark



perf 13.5 x 13.5

Registered letter to the USA; 5¢ basic letter rate + 10¢ registration fee



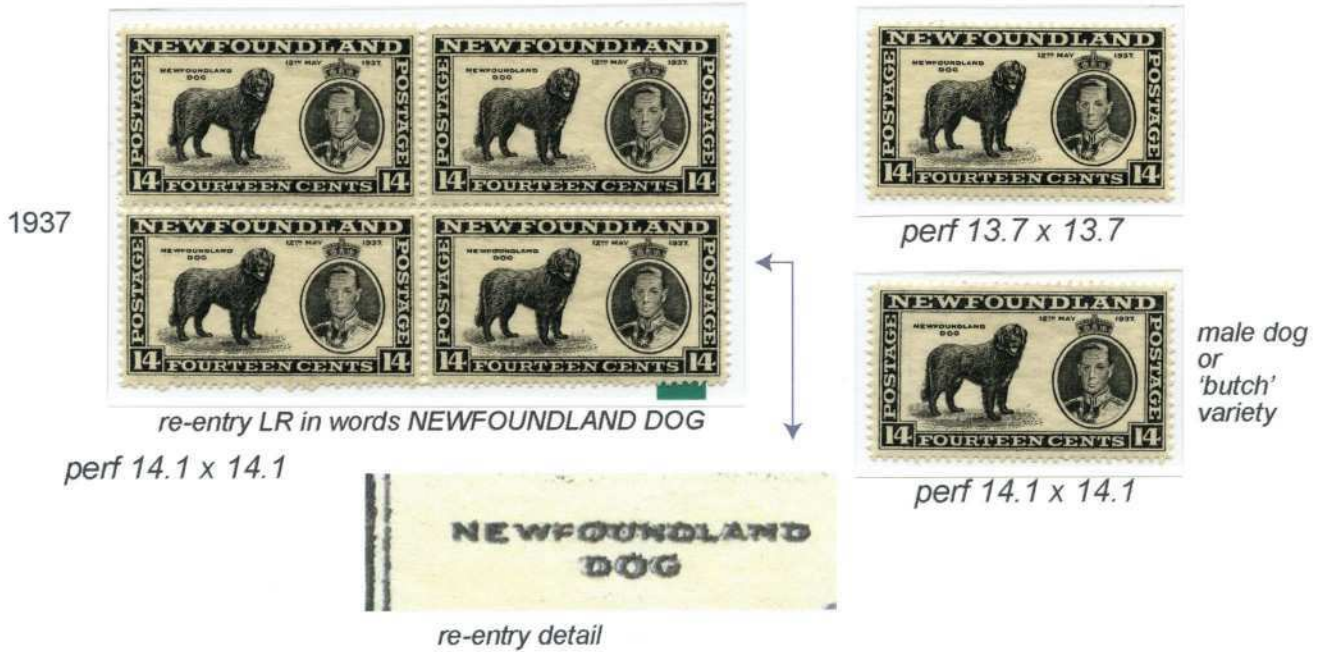
Westerland Sirius.

Champion Westerland Sirius, also raised in the kennels at Westerland

—Early postcard printed by the Photogelatine Engraving Co., Ltd., Toronto

Newfoundland dogs have evolved over a long period of time to become the show dogs we see today. The ancestry of most modern-day Newfoundlands can be traced to a single stud dog named Siki who lived in the 1920s.

Part of a special issue by the Newfoundland government for the coronation of King George VI; the design is similar to the 1932 14¢ issue but with the king's portrait added; Coat of Arms watermark



Registered cover to Canada paying the 5¢ postage + 10¢ registration; the 14¢ Long Coronation value has a re-entry in NEWFOUNDLAND DOG



Westerland Sieger's pedigree states 'Westerland Sheila' as the mother, and the sire was named Billy

From the Second Resources Issue. A new printing from dies of the 1932 issue, re-touched and re-worked. The original plates were damaged by WWII enemy action in London; Coat of Arms watermark.

1944



Type 3 plate UR

perf 12.8 x 12.8

all four perforation sizes shown



perf 12.5 x 12.5

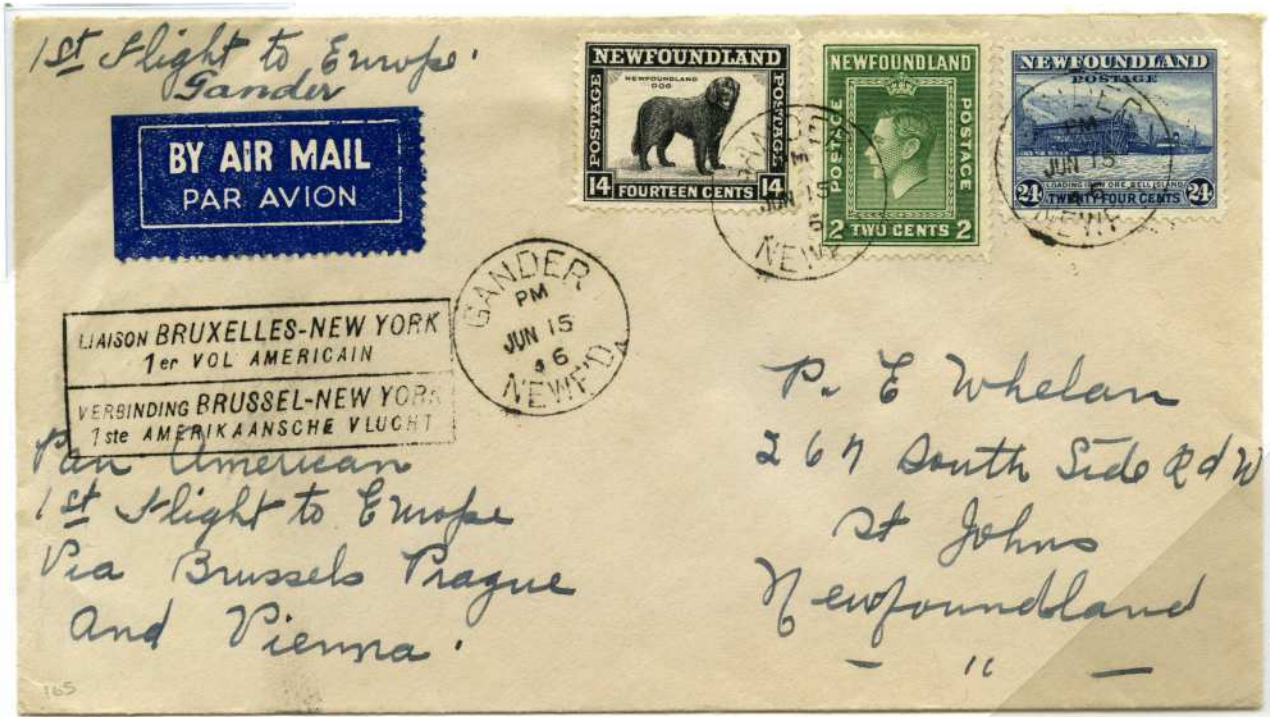


perf 12.8 x 12.5



complete offset
perf 12.5 x 12.8

Cover sent from Gander to St. John's via Pan American's 1946 First Flight to Europe; postal fees include 4¢ Newfoundland inland rate + 36¢ return rate charged by the airlines, though this could vary

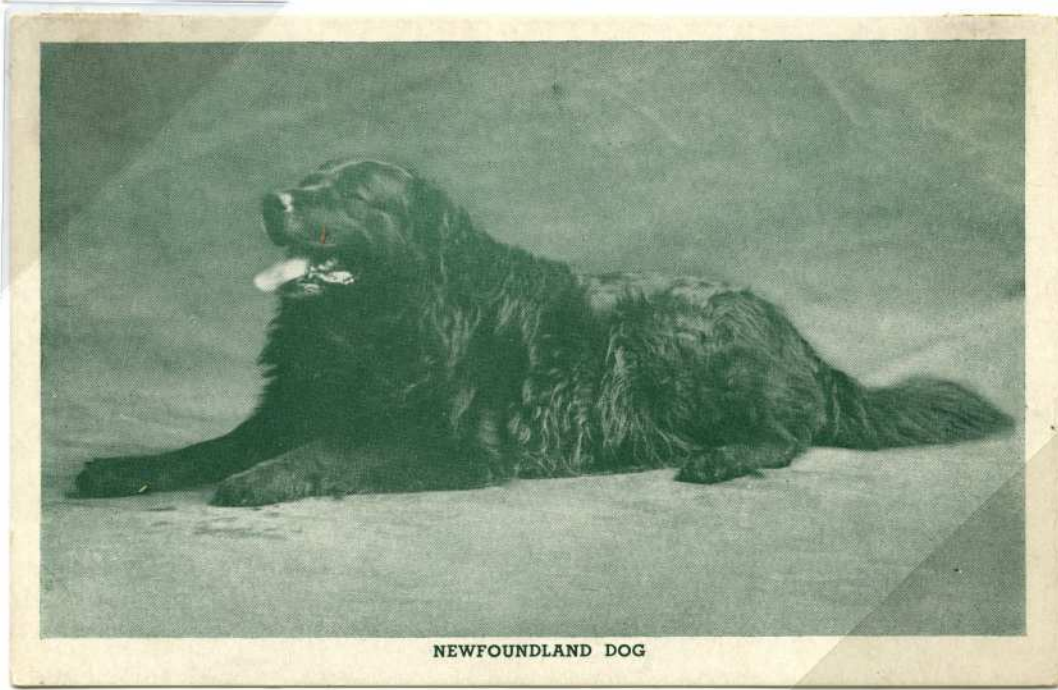


Newfoundland and Labrador working dogs

Newfoundland dogs were multipurpose dogs: water dog, fishing aid, draft animal and show dog; Labrador Esquimaux, huskies and sled dogs were hard-working, and especially necessary in the winter months

After hard work and putting on a great showing the dogs take time out for a well-deserved rest

Newfoundland dog –postcard by J.C. Parsons, Corner Brook, N.F.L.D.



*Postcard showing Labrador sled dogs resting.
–printed for Ayre & Sons, Ltd., St. John's, Newfoundland.*

