

**Canada: World's Grain Exhibition & Conference, Regina, 1933**

**Exhibit Purpose**

This exhibit covers the story of the World's Grain Exhibition & Conference which was undertaken to celebrate the 50th anniversary of the first grain harvest on the Canadian prairies in 1832. Due to the drought in Western Canada 1930-31 and the worldwide economic depression the event was rescheduled and successfully held July 24 - August 5, 1933.

**Exhibit Scope**

The story is told using non-philatelic elements including booklets, prize list advertising labels, and exhibition souvenir items plus pre-production, production and usage material including cachet covers, slogans and rate covers of a wheat harvesting pictorial stamp overprinted to commemorate the exhibition and conference.

**Importance**

Grain producing nations of the world were invited to participate in the exhibition and conference under the theme "show what you grow; share what you know." Delegations from Argentina, Australia, Belgium, Czechoslovakia, Estonia, Great Britain, Guatemala, India, Italy, Mexico, Netherlands, New Zealand, Peru, Philippines, Poland, Portugal, Spain, Switzerland and Yugoslavia participated in this unique international event. This exhibition combined with the Imperial Economic Conference in 1932 and the UPU Preparatory Commission meeting earlier in 1933 were the first of many international conferences and events to be held in Canada in the following years.

**Difficulty of Acquisition**

Ephemera and souvenir items from this exhibition and conference are difficult to acquire. Imperforate pairs are regularly offered at auction, however imperforate blocks are seldom seen. Specimen overprints are rare as few countries have sold their UPU specimen collections. Properly used rate covers are difficult to acquire as there were few specific rates for this high value.

**Exhibit Plan**

- A. Pre-Exhibition Promotion
- B. Overprinted Stamp Issue
- C. Postal Rates
- D. Event Souvenirs

**References**

- The Canadian Philatelist Vol 70, #4 - The 1933 Regina World Grain Exhibition by Dale Spiers
- Canada Domestic and International Postal Rates and Fees 1870-1990 by Dr. Robert Smith and Anthony S. Wawrukiewicz
- World's Grain Exhibition and Conference Announcement & Prize List Booklets, 1932 and Final edition 1933.
- Regina Leader-Post newspaper and philatelic journal articles.

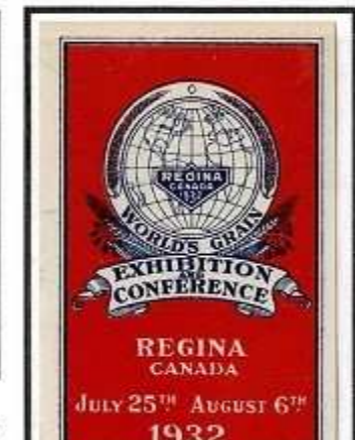


1932 Promotional notebook, re-dated 1933

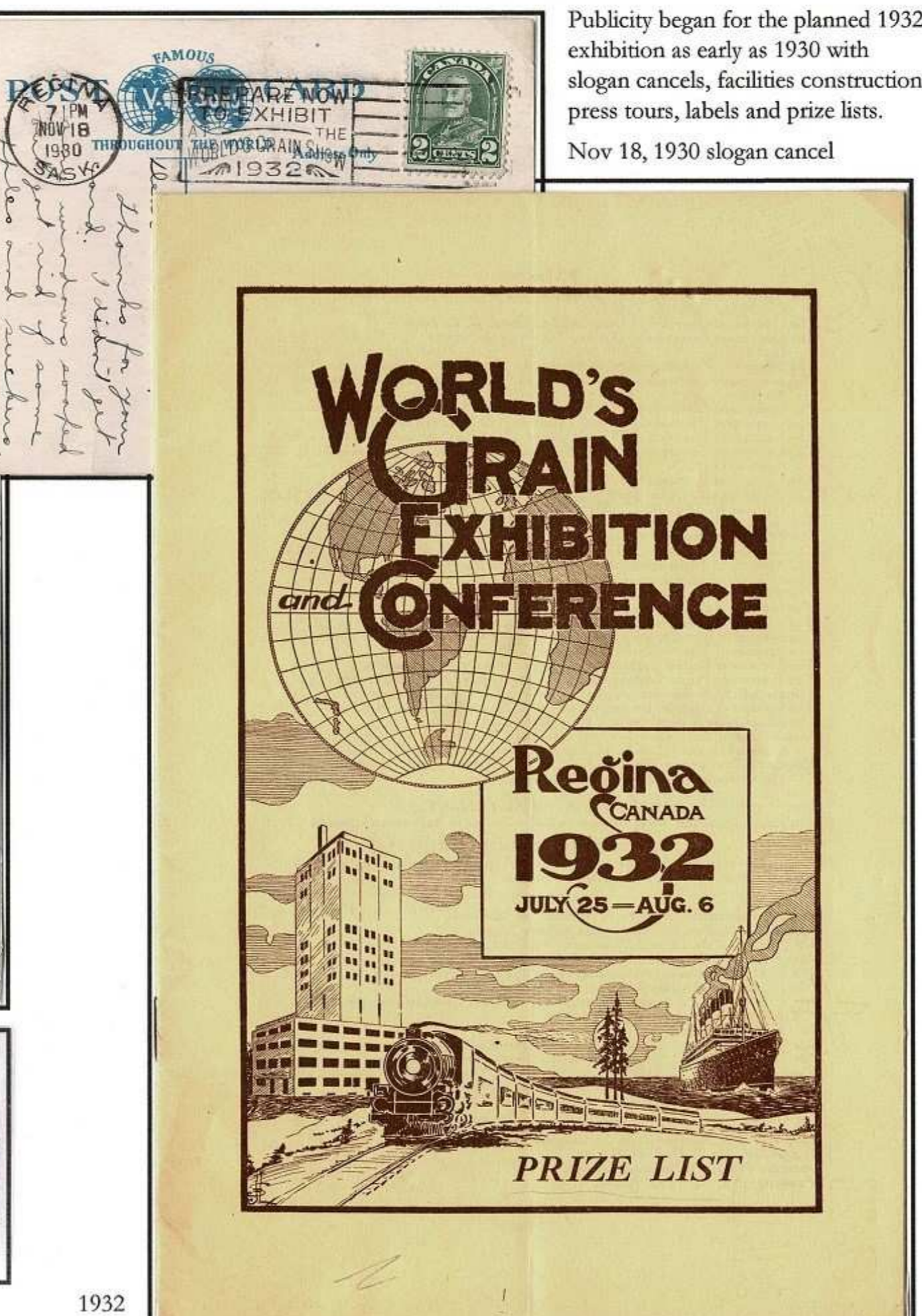
**A. Pre-Exhibition Promotion**



The above photo was taken in the new \$200,000 building now being erected at Regina, Canada, to house the World's Grain Exhibition and Conference to be held in that city next year. In the foreground are some of the 300 delegates who attended the annual convention of the Canadian Weekly Newspaper Association at Regina. The picture shows the main wing of the World's Grain Exhibition and Conference building and gives some idea of its enormous size.



1932 Paper & Foil Promotional labels

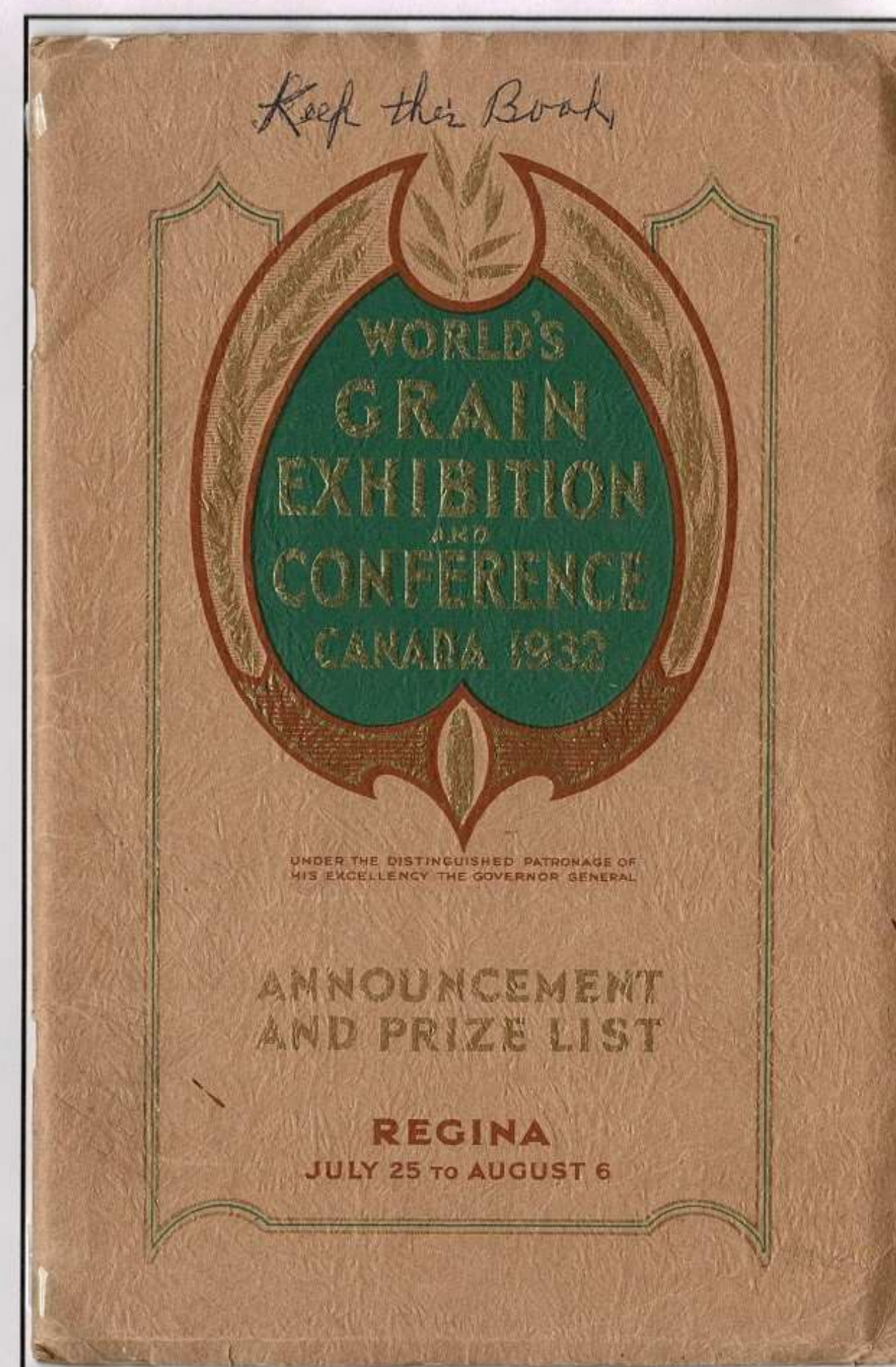


1932 Prize List

Publicity began for the planned 1932 exhibition as early as 1930 with slogan cancels, facilities construction press tours, labels and prize lists. Nov 18, 1930 slogan cancel

**A. Pre-Exhibition Promotion**

**Announcement & Prize List 1932**



1932 Announcement and Prize List Book, July 25 - Aug 6, 1932.

**A. Pre-Exhibition Promotion**

**Grain Exhibition Rescheduled to 1933**

Due to the ongoing drought in the prairie provinces in 1931-32 and the economic depression the exhibition and Conference was rescheduled to July 24-Aug 5, 1933.

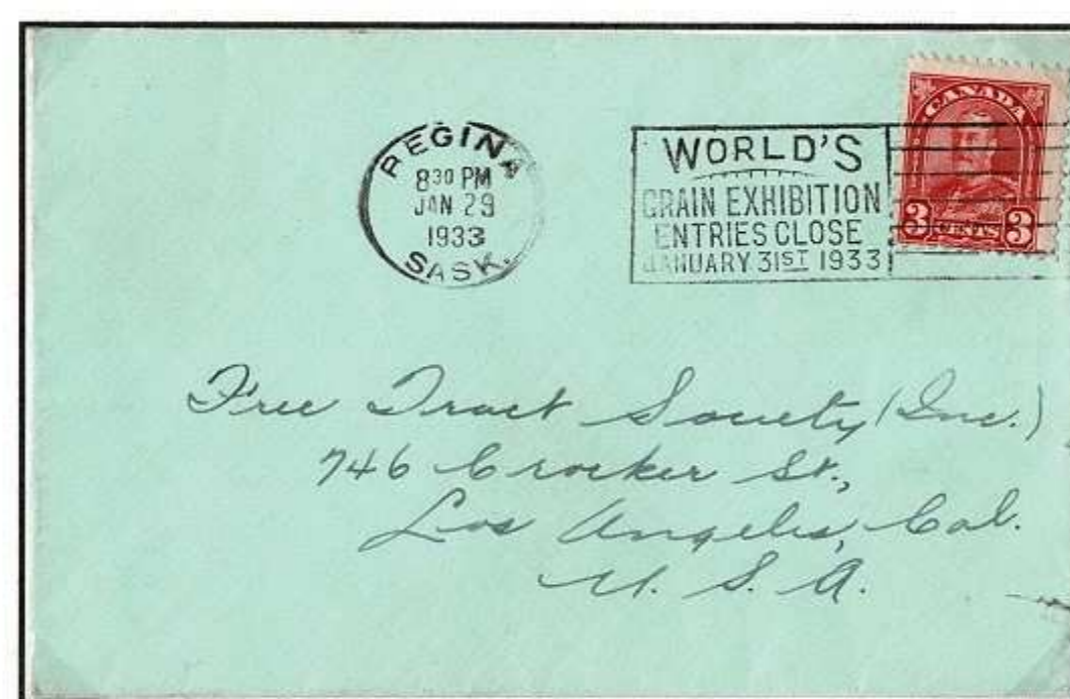


Final Announcement and Prize List published for the rescheduled dates in 1933.

**A. Pre-Exhibition Promotion**

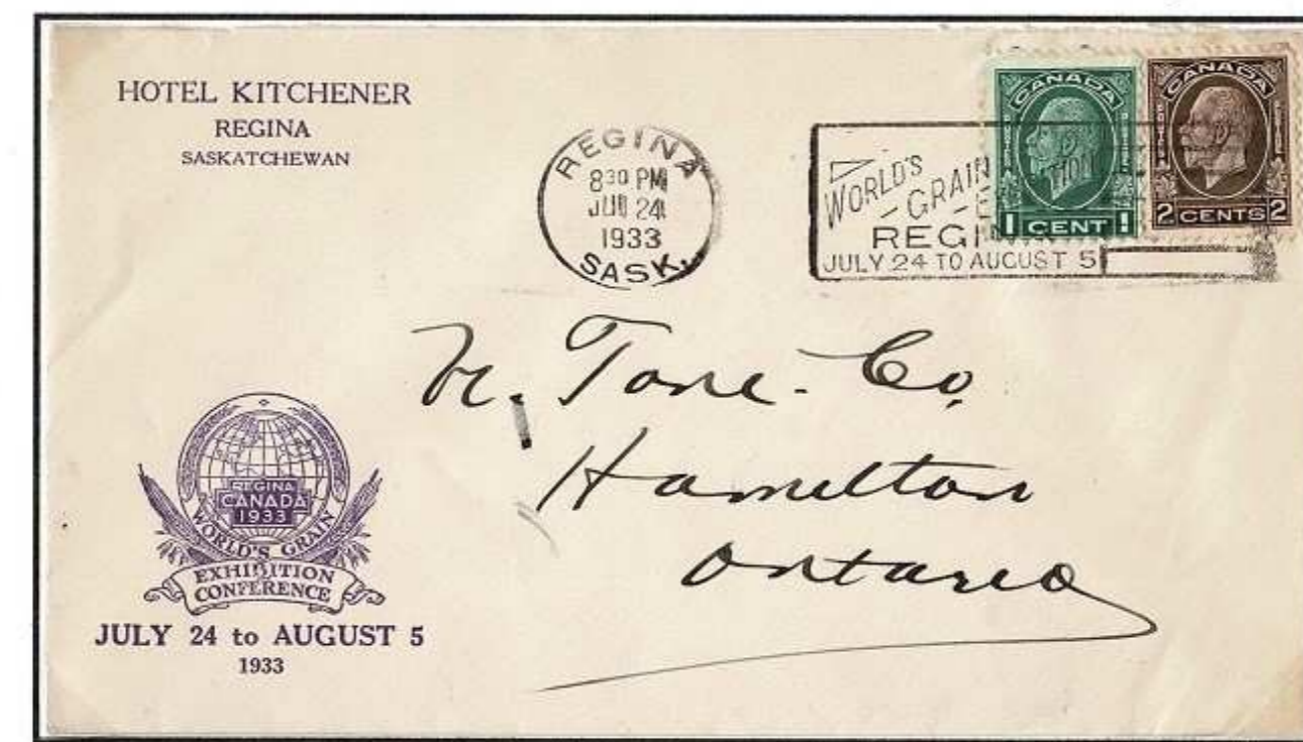
**Slogan Cancels**

The first 1933 slogan cancel message was "WORLD'S GRAIN EXHIBITION ENTRIES CLOSE JANUARY 31 1933" on 4 lines. This slogan cancel was used in Regina in December 1932 and January 1933.



Regina, Sask. Jan 23, 1933

The second 1933 slogan cancel message was "WORLD'S GRAIN EXHIBITION REGINA JULY 24 TO AUGUST 5" on 5 lines, the first 3 of which are diagonal.



Regina, Sask. July 24, 1933, opening day of the exhibition on Hotel Kitchener stationery with the exhibition and conference logo.

**A. Pre-Exhibition Promotion**

**OSL and Radio Club Cards**

Thousands of QSL cards were printed with the grain exhibition advertising on both sides and distributed widely among amateur radio stations in USA and Canada.



QSL card reverse - mailed from Saint Johnsbury, VT, to Brattleboro, VT, USA

QSL card mailed from Racine, Wisconsin, USA on Oct 5, 1932 to Bowmanville Ont. Canada

Unused CHWC Regina Sask. Radio Club Verification Card with Grain Exhibition advertising on one side.

**B. Overprinted Stamp Issue**

**Host Stamp, Imperforates, Specimen**

**Host Stamp**

The host stamp chosen for the commemorative World's Grain Exhibition & Conference Regina 1933 stamp overprint was, appropriately, the 20 cent Wheat Harvesting stamp from the 1930 Arch issue.



**Imperforates**

Jephcott & Gates estimated that 75 pairs of imperforate overprinted stamps exist. No proofs of the overprint alone are known.



**Specimen**

Specimens of current issue stamps were sent annually to each UPU country. Most countries still maintain these specimens in museums, but some have sold their collections.



Specimen from the Tunisian Post Office collection

The Tunisian Post Office stamped copies "SPECIMEN" with a semi-bold sans serif caps 2.6 x 12.8 mm hand stamp. They glued their specimen stamps onto quadrilled pages, a portion of which remains with this specimen.

**B. Overprinted Stamp Issue**

**Issued Stamp, Plate Imprints, Constant Variety**

**Issued Stamp**



Issue Date: July 24, 1933  
Printer: British American Bank Note Co.  
Quantity: 1,560,000  
Format: 10 Wide x 20 High  
Plates: 1  
Perf: 11

**Plate Imprints**

The host stamp was printed from only one plate. Plate 1 imprints exist from all four corner of the plate.



Plate 1 UL

**Broken X Variety**

The constant Broken X variety occurs of position 19.



Position 19 Broken X in Upper Left stamp.

**B. Overprinted Stamp Issue**

**Plate Layout and Separation into Panes**

The host stamp was printed from a plate of 200 images in a 10 wide x 20 high format. Each printed sheet was divided into four panes of 50 stamps using a guillotine. Positions of stamps or blocks on with two guillotined edges can be identified.



Position 1 Lower Right pane  
Guillotine edges left side & top



Positions 26-50 Upper Left pane. Guillotine cut separation edges along bottom and right side.

**B. Overprinted Stamp Issue**

**First Day Covers**

The Regina Post Office cancelled over 4,000 First Day Covers on July 24, 1933. Many had no cachets and others had rubber stamp cachets or Cinderella seals advertising the grain exhibition.



A Regina stamp columnist offered readers help in getting a FDC with a rubber stamp cachet for a two-cent handling fee. The offer was reprinted in Linn's resulting in many orders from USA. These FDCs were registered and signed by Leo Labelle, Acting Postmaster.



Registered First Day Cover, July 24, 1933 signed by the Exhibition Secretary, Ernest Rhoades.

**B. Overprinted Stamp Issue**

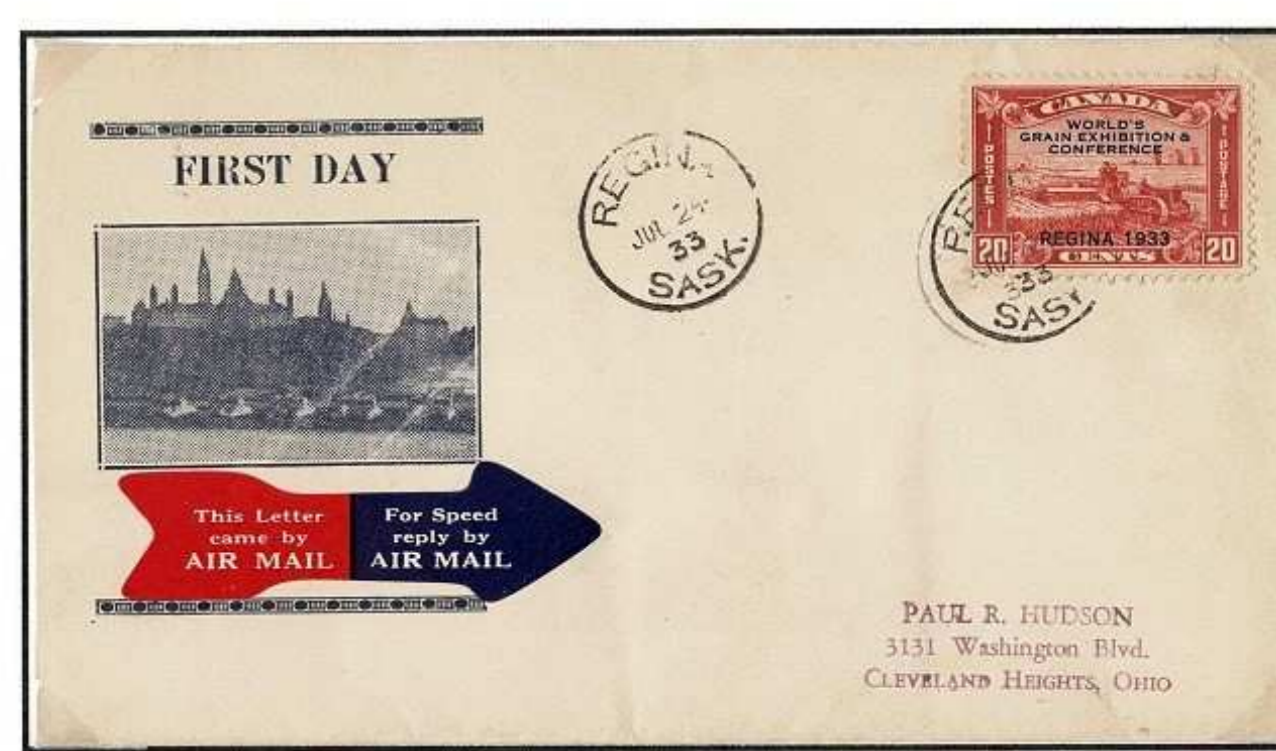
**First Day Covers**

The Regina Post Office was the only designated office for the First Day Covers for the Grain Exhibition over print stamp.

Envelopes with Cinderella Grain Exhibition labels and envelopes with cachets prepared for the 1933 UPU Preparatory meeting 10 weeks earlier were also used for First Day Covers.



Metal foil Grain Exhibition label used as Cachet



Cachet prepared for the UPU Preparatory meeting used for a Grain Exhibition First Day Cover.

**C. Usages**

**Registered Drop Letter & Non-Letter Mail**

**Registered Drop Letter**



Dundas ON, Nov 17, 1933 - 3 cent drop letter rate for 1-2 oz letter plus 30 cent registration fee for \$50-\$75 indemnity. Stamps & cancels applied to letter which was then folded & dog eared as a pocket for enclosure.

**Non - Letter Mail**



Two Grain Exhibition stamps part of multi-franked parcel tag with 65 cents postage. Cexpecece BC, Nov. 23, 1933. The tag is addressed to the Geological Survey, Department of Mines, Ottawa and was most likely on a bag of mineral samples.

**C. Usages**

**Surface and Airmail Registered Letters to Europe**

All letters were sent by surface to UK. Airmail rated items went by air UK to final destination in Europe.



Registration Fee was 10 cents regardless of destination or method of conveyance.

Registered Surface Mail Montreal PQ, Oct 6, 1934 to Liechtenstein - Arrival Oct 18, 1934. 10 cent Registration fee plus 2 x 5 Cent UPU letter rate for 1-2 oz



Registered Air Mail Kitchener ON, May 15, 1939 to Germany - Arrived May 25, 1939. Routed by Air in Canada, by Sea to London and by Air to Germany. 10 cent registration fees plus 10 cents per 1/2 oz Airmail rate to Europe.

**C. Usages**

**Airmail to British West Indies & Central America**

Rate - 15 Cents per 1/2 oz. from Feb 2, 1931 to June 30, 1934



Hamilton Ont. Feb 2, 1934 to Port Lemon, Costa Rica. 45 cents postage possibly paying triple weight rate but most likely 45 cent per 1/2 oz rate to South America was incorrectly used.

Rate increased 35 cents per 1/2 oz. July 1, 1934 to June 30, 1935



Montreal P.Q. Oct 19, 1934 to Trinidad, BWT - Arrival Oct 23, 1934

**C. Usages**

**Airmail to Australasia**

Rate - 15 Cents per 1/2 oz. from Feb 2, 1931 & 35 Cents per 1/2 oz from Jul 1, 1934 to Jun 30, 1935



Ottawa, ON., Nov 22, 1934 to Rambang, Dutch East Indies - Arrived Dec 18, 1934. Routed by Surface across the North Atlantic to London and then by Imperial Airways to Dutch East Indies.

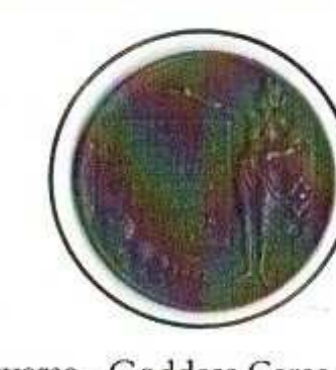
**D. Event Souvenirs**

**Souvenir Medallions**

By the end of the exhibition and conference on August 5, 1933, 214, 000 people, equivalent to four times the population of Regina had attended. Many souvenirs and memories were taken home.



Obverse - Ploughman and team resting as sun sets



Reverse - Goddess Ceres with tablet "Commemorating the First World Grain Exhibition & Conference Regina Canada 1933"

# Canada: World's Grain Exhibition & Conference, Regina, 1933

## Exhibit Purpose

This exhibit covers the story of the World's Grain Exhibition & Conference which was undertaken to celebrate the 50th anniversary of the first grain harvest on the Canadian prairies in 1832. Due to the drought in Western Canada 1930-31 and the worldwide economic depression the event was rescheduled and successfully held July 24 - August 5, 1933.

## Exhibit Scope

The story is told using non-philatelic elements including booklets, prize list advertising labels, and exhibition souvenir items plus pre-production, production and usage material including cachet covers, slogans and rate covers of a wheat harvesting pictorial stamp overprinted to commemorate the exhibition and conference.

## Importance

Grain producing nations of the world were invited to participate in the exhibition and conference under the theme "show what you grow; share what you know." Delegations from Argentina, Australia, Belgium, Czechoslovakia, Estonia, Great Britain, Guatemala, India, Italy, Mexico, Netherlands, New Zealand, Peru, Philippines, Poland, Portugal, Siam, Spain, Switzerland and Yugoslavia participated in this unique international event. This exhibition combined with the Imperial Economic Conference in 1932 and the UPU Preparatory Commission meeting earlier in 1933 were the first of many international conferences and events to be held in Canada in the following years.

## Difficulty of Acquisition

Ephemera and souvenir items from this exhibition and conference are difficult to acquire. Imperforate pairs are regularly offered at auction, however imperforate blocks are seldom seen. Specimen overprints are rare as few countries have sold their UPU specimen collections. Properly used rate covers are difficult to acquire as there were few specific rates for this high value.

## Exhibit Plan

- |                             |                            |
|-----------------------------|----------------------------|
| A. Pre-Exhibition Promotion | B. Overprinted Stamp Issue |
| C. Postal Rates             | D. Event Souvenirs         |

## References

- The Canadian Philatelist Vol 70, #4 — The 1933 Regina World Grain Exhibition by Dale Spiers.
- Canada Domestic and International Postal Rates and Fees 1870-1990 by Dr. Robert Smith and Anthony S. Wawrukiewicz.
- World's Grain Exhibition and Conference Announcement & Prize List Booklets, 1932 and Final edition 1933.
- Regina Leader-Post newspaper and philatelic journal articles.



1932 Promotional notebook, re-dated 1933

A. Pre-Exhibition Promotion

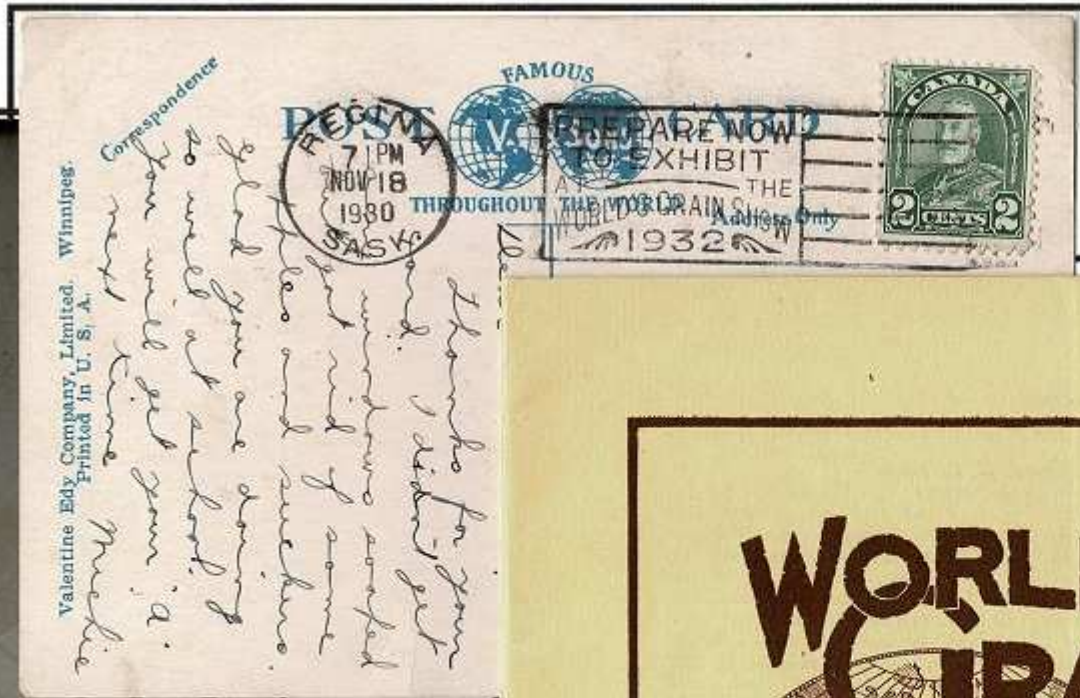


The above photo was taken in the new \$200,000 building now being erected at Regina, Canada, to house the World's Grain Exhibition and Conference to be held in that city next year. In the foreground are seen some of the 300 delegates who attended the annual convention of the Canadian Weekly Newspaper Association at Regina. The picture shows the main wing of the World's Grain Exhibition and Conference building and gives some idea of its enormous size.

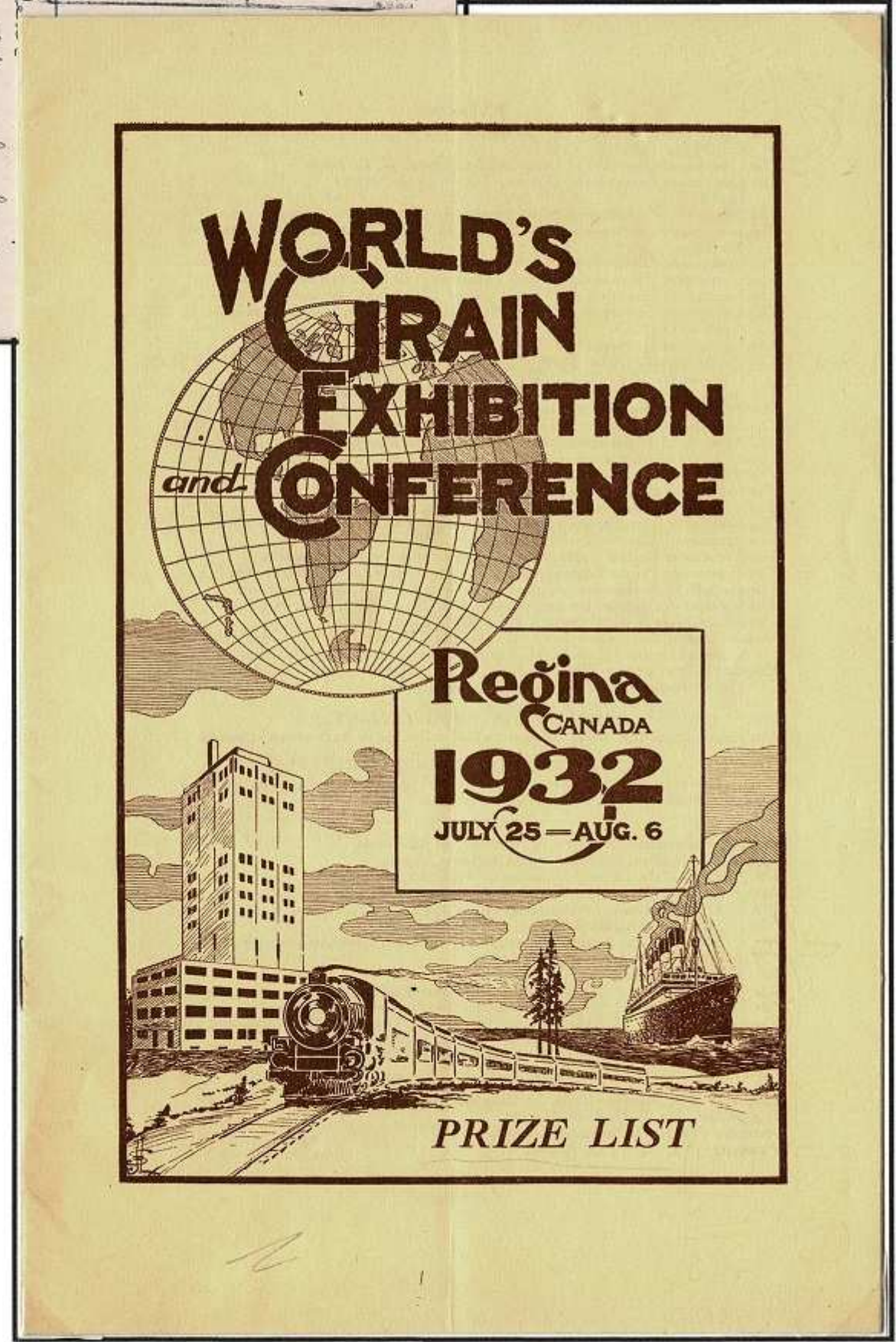
A 2483

Verso Reduced

Press photo July 18, 1931 of exhibition buildings under construction.



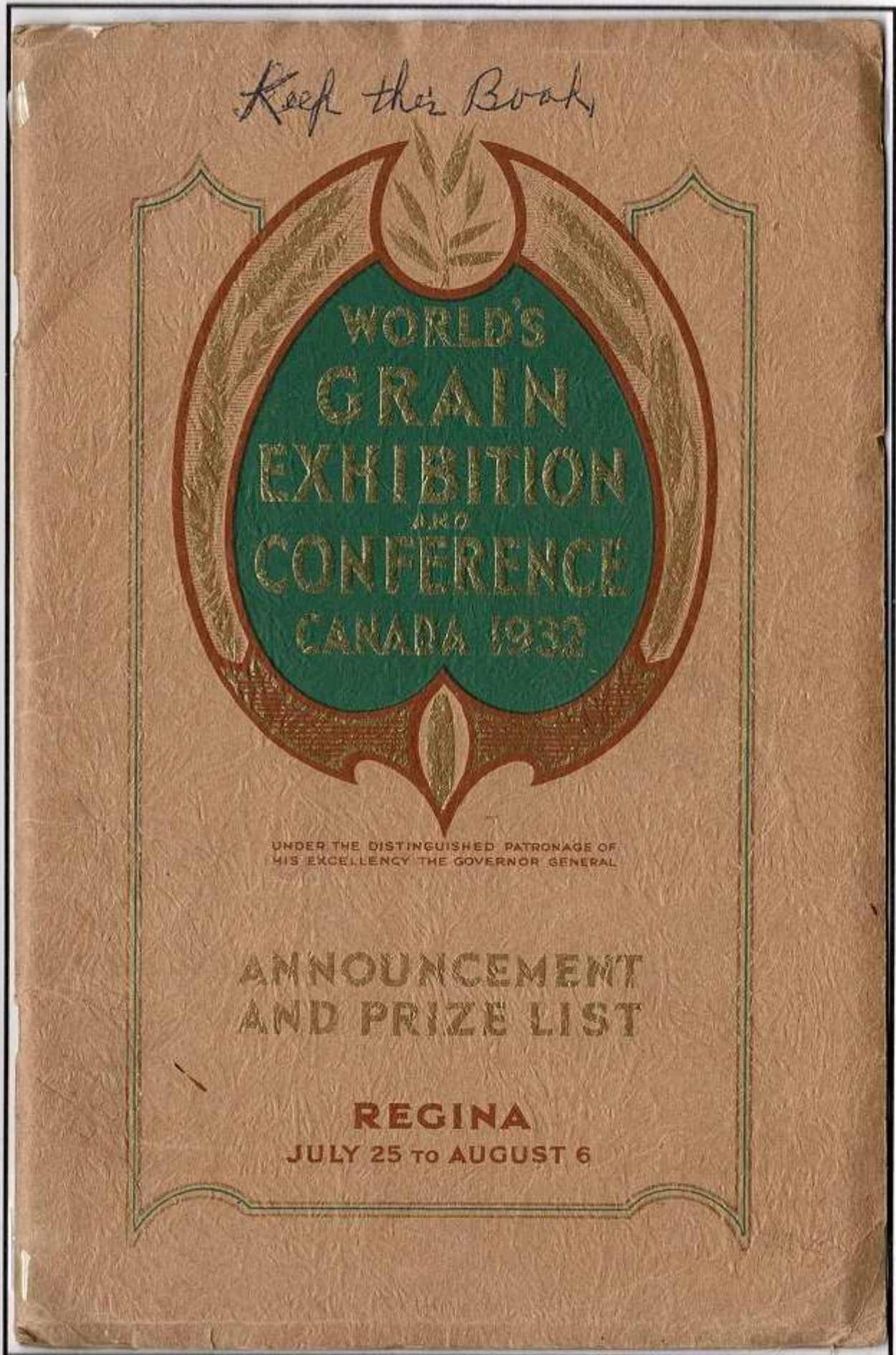
Publicity began for the planned 1932 exhibition as early as 1930 with slogan cancels, facilities construction press tours, labels and prize lists.  
Nov 18, 1930 slogan cancel



1932 Prize List

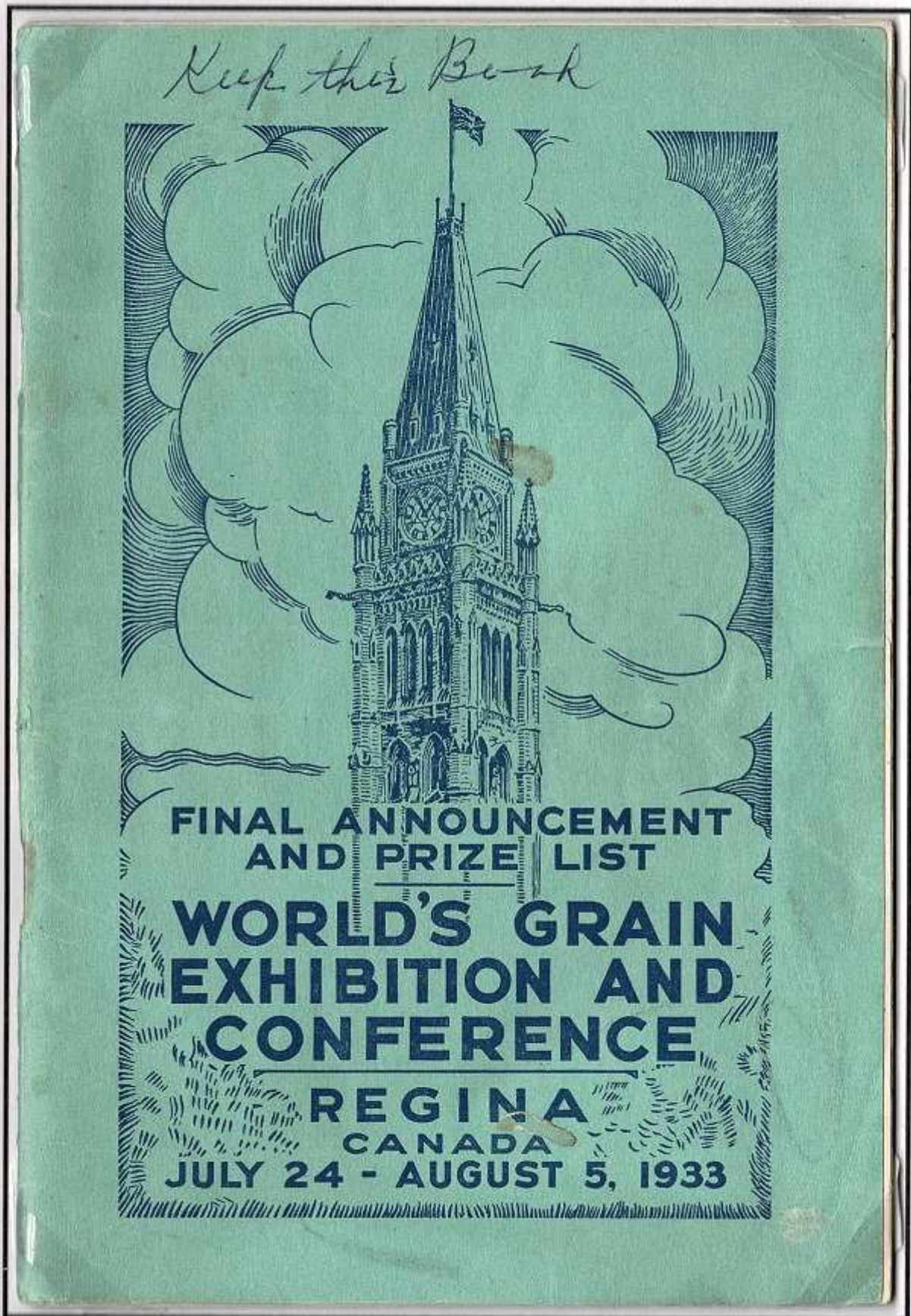


1932 Paper & Foil Promotional labels



1932 Announcement and Prize List Book. July 25- Aug 6, 1932.

Due to the ongoing drought in the prairie provinces in 1931-32 and the economic depression the exhibition and Conference was rescheduled to July 24-Aug 5, 1933.

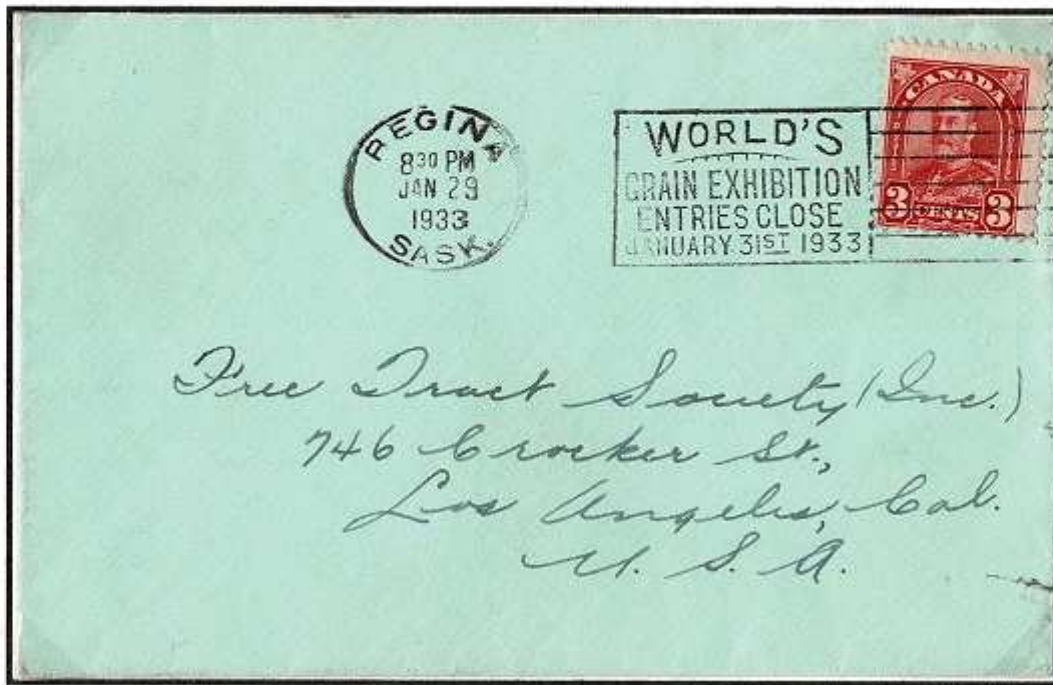


Final Announcement and Prize List published for the rescheduled dates in 1933.

## A. Pre-Exhibition Promotion

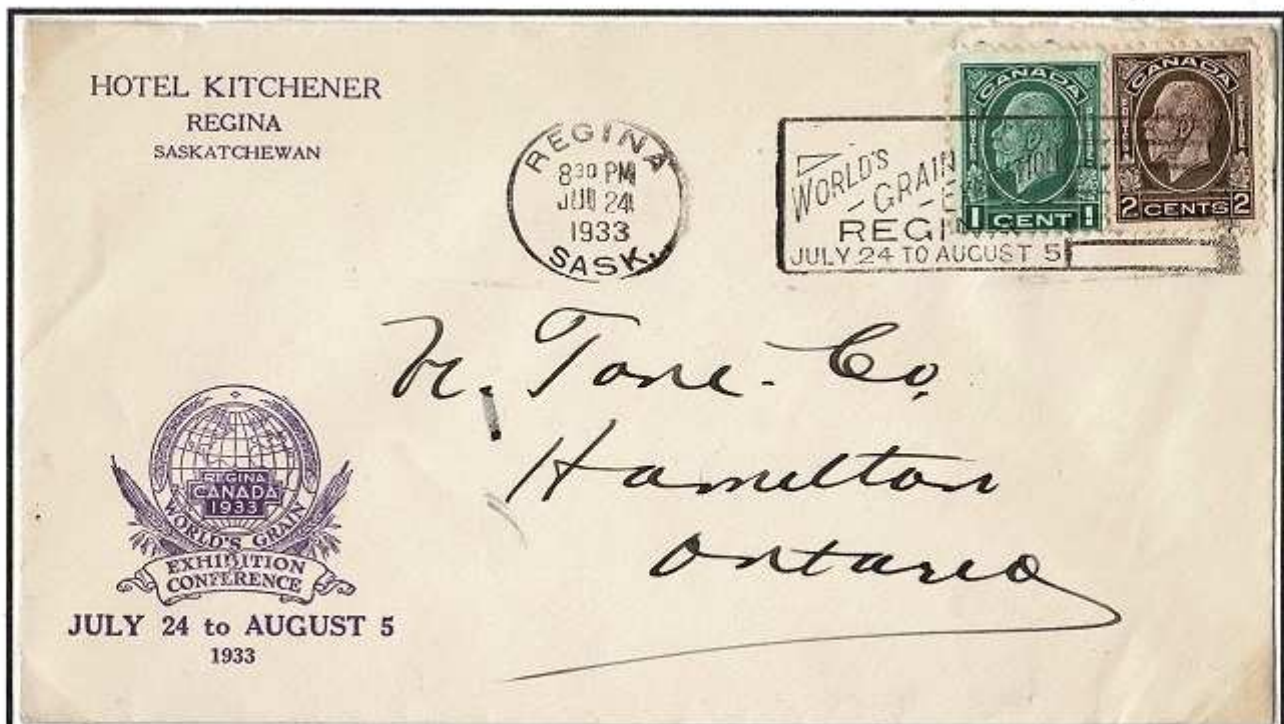
## Slogan Cancels

The first 1933 slogan cancel message was "WORLD'S GRAIN EXHIBITION ENTRIES CLOSE JANUARY 31<sup>ST</sup> 1933" on 4 lines. This slogan cancel was used in Regina in December 1932 and January 1933.



Regina, Sask. Jan 23, 1933

The second 1933 slogan cancel message was "WORLD'S GRAIN EXHIBITION REGINA JULY 24 TO AUGUST 5" on 5 lines, the first 3 of which are diagonal.



Regina, Sask. July 24, 1933, opening day of the exhibition on Hotel Kitchener stationery with the exhibition and conference logo.

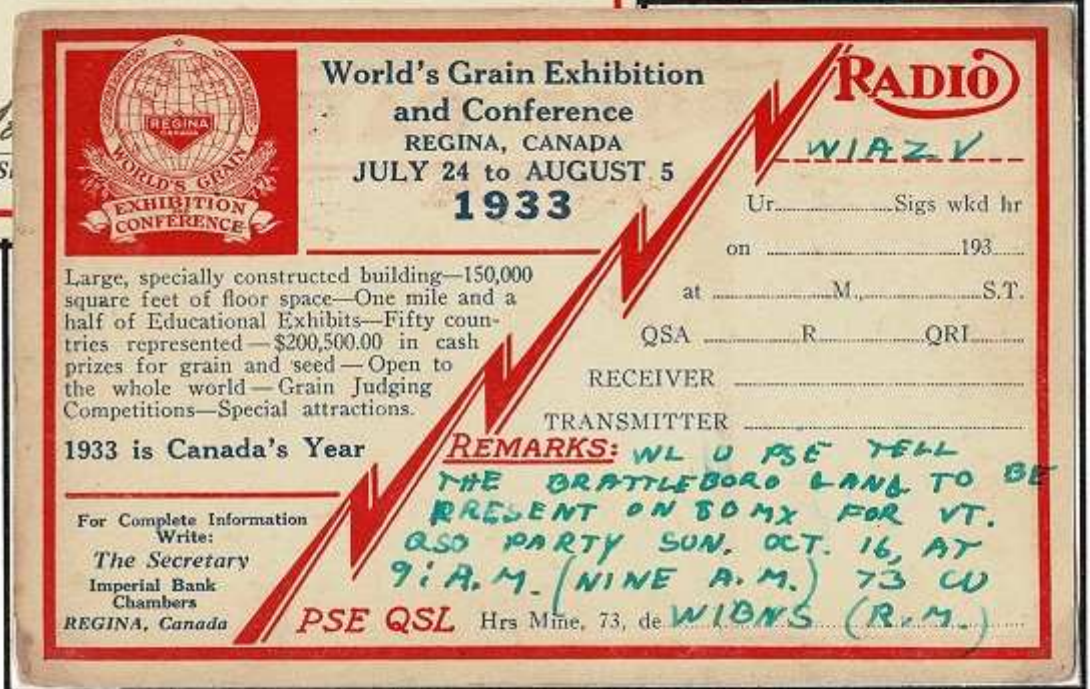
# A. Pre- Exhibition Promotion

# OSL and Radio Club Cards

Thousands of QSL cards were printed with the grain exhibition advertising on both sides and distributed widely among amateur radio stations in USA and Canada.



QSL card mailed from Racine, Wisconsin, USA on Oct 5, 1932 to Bowmanville Ont. Canada



QSL card reverse – mailed from Saint Johnsbury, VT, to Brattleboro, VT, USA



Unused CHWC Regina Sask. Radio Club Verification Card with Grain Exhibition advertising on one side.

## B. Overprinted Stamp Issue

## Host Stamp, Imperforates, Specimen

### Host Stamp

The host stamp chosen for the commemorative **World's Grain Exhibition & Conference Regina 1933** stamp overprint was, appropriately, the 20 cent Wheat Harvesting stamp from the 1930 Arch issue.



### Imperforates

Jephcott & Gates estimated that 75 pairs of imperforate overprinted stamps exist. No proofs of the overprint alone are known.



### Specimen

Specimens of current issue stamps were sent annually to each UPU country. Most countries still maintain these specimens in museums, but some have sold their collections

Specimen from the  
Tunisian Post Office  
collection



c (BPA)

The Tunisian Post Office stamped copies "SPECIMEN" with a semi-bold, sans serif caps 2.6 x 12.8 mm hand stamp. They glued their specimen stamps onto quadrilled pages, a portion of which remains with this specimen.

## B. Overprinted Stamp Issue

Issued Stamp, Plate Imprints, Constant Variety

### Issued Stamp



**Issue Date:** July 24, 1933  
**Printer:** British American Bank Note Co.  
**Quantity:** 1,560,000  
**Format:** 10 Wide x 20 High  
**Plates:** 1  
**Perf.:** 11



### Plate Imprints

The host stamp was printed from only one plate. Plate 1 imprints exist from all four corner of the plate.



Plate 1 UL

### Broken X Variety

The constant Broken X variety occurs of position 19.



Position 19 Broken X in Upper Left stamp.

## B. Overprinted Stamp Issue

## Plate Layout and Separation into Panes

The host stamp was printed from a plate of 200 images in a 10 wide x 20 high format. Each printed sheet was divided into four panes of 50 stamps using a guillotine. Positions of stamps or blocks on with two guillotined edges can be identified.



Position 1 Lower Right pane  
Guillotine edges left side & top



Positions 26-50 Upper Left pane. Guillotine cut separation edges along bottom and right side.

## B. Overprinted Stamp Issue

## First Day Covers

The Regina Post Office cancelled over 4,000 First Day Covers on July 24, 1933. Many had no cachets and others had rubber stamp cachets or Cinderella seals advertising the grain exhibition.



A Regina stamp columnist offered readers help in getting a FDC with a rubber stamp cachet for a two-cent handling fee. The offer was reprinted in Linn's resulting in many orders from USA. These FDCs were registered and signed by Leo Labelle, Acting Postmaster.



Registered First Day Cover, July 24, 1933 signed by the Exhibition Secretary, Ernest Rhoades.

## B. Overprinted Stamp Issue

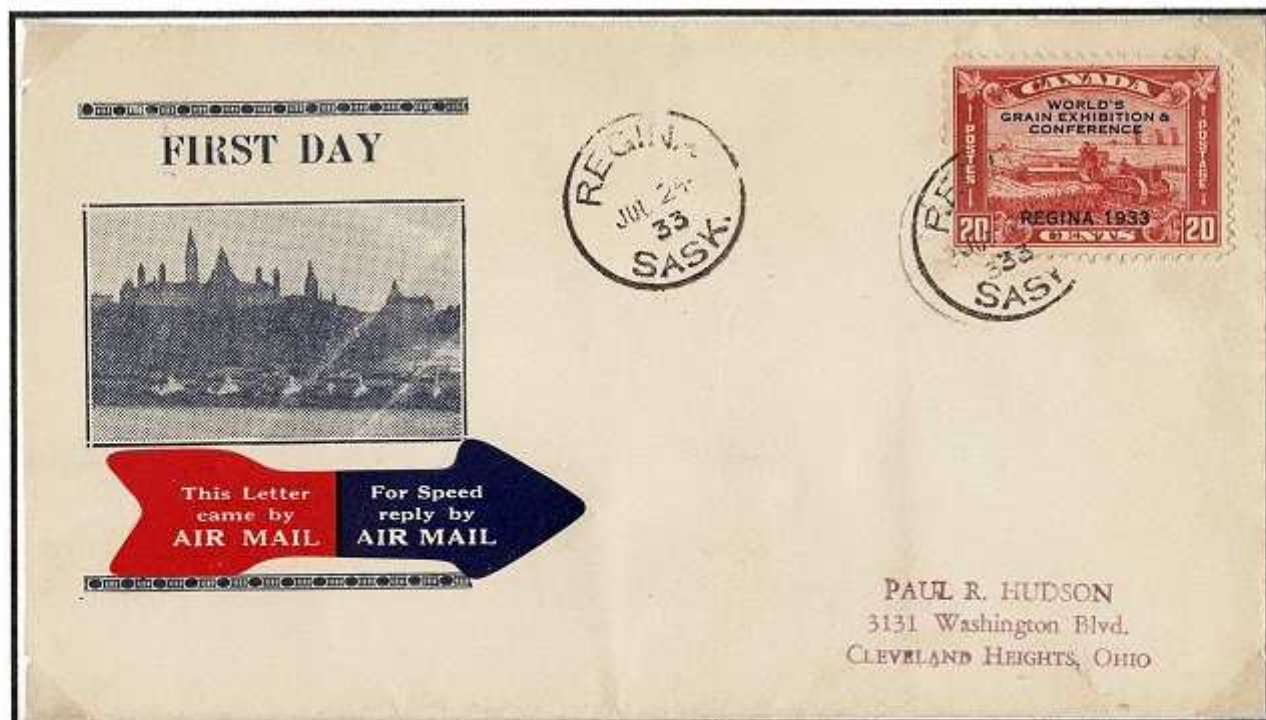
## First Day Covers

The Regina Post Office was the only designated office for the First Day Covers for the Grain Exhibition over print stamp.

Envelopes with Cinderella Grain Exhibition labels and envelopes with cachets prepared for the 1933 UPU Preparatory meeting 10 weeks earlier were also used for First Day Covers.



Metal foil Grain Exhibition label used as Cachet



Cachet prepared for the UPU Preparatory meeting used for a Grain Exhibition First Day Cover.

## C. Usages

## Registered Drop Letter & Non-Letter Mail

### Registered Drop Letter



Dundas ON, Nov 17, 1933 - 3 cent drop letter rate for 1-2 oz letter plus 30 cent registration fee for \$50-\$75 indemnity. Stamps & cancels applied to letter which was then folded & dog eared as a pocket for enclosure.

### Non - Letter Mail



Two Grain Exhibition stamps part of multi-franked parcel tag with 65 cents postage. Ceepeecee BC, Nov. 23, 1933. The tag is addressed to the Geological Survey, Department of Mines, Ottawa and was most likely on a bag of mineral samples.

### C. Usages

### Surface and Airmail Registered Letters to Europe

All letters were sent by Surface to UK. Airmail rated items went by air UK to final destination in Europe.



**Registration Fee** was 10 cents regardless of destination or method of conveyance.

**Registered Surface Mail** Montreal PQ, Oct 6, 1934 to Liechtenstein – Arrival Oct 18, 1934. 10 cent Registration fee plus 2 x 5 Cent UPU letter rate for 1-2 oz



**Registered Air Mail** Kitchener ON. May 15, 1939 to Germany-Arrived May 25, 1939. Routed by Air in Canada, by Sea to London and by Air to Germany. 10 cent registration fees plus 10 cents per ½ oz Airmail rate to Europe.

C. Usages     Airmail to British West Indies & Central America

Rate - 15 Cents per ½ oz from Feb 2, 1931 to June 30, 1934



Hamilton Ont. Feb 2, 1934 to Port Lemon, Costa Rica. 45 cents postage possibly paying triple weight rate but most likely 45 cent per ½ oz rate to South America was incorrectly used.

Rate increased 35 cents per ½ oz. July 1, 1934 to June 30, 1935



Montreal P.Q. Oct 19, 1934 to Trinidad, BWI – Arrival Oct 23, 1934

## C. Usages

## Airmail to Australasia

Rate - 15 Cents per ½ oz. from Feb 2, 1931 & 35 Cents per ½ oz from Jul 1, 1934 to Jun 30, 1935



Ottawa, ON., Nov 22, 1934 to Rambang, Dutch East Indies – Arrived Dec 18, 1934. Routed by Surface across the North Atlantic to London and then by Imperial Airways to Dutch East Indies.

## D. Event Souvenirs

## Souvenir Medallions

By the end of the exhibition and conference on August 5, 1933, 214, 000 people, equivalent to four times the population of Regina had attended. Many souvenirs and memories were taken home.



Obverse - Ploughman and team resting as sun sets



Reverse - Goddess Ceres with tablet  
“Commemorating the First World  
Grain Exhibition & Conference  
Regina Canada 1933”