



## Great Britain – Queen Elizabeth II Head Errors

Errors on stamps are the exception. Hence, they are the unusual. Included in the Errors on British Stamps are stamps where the "Queen's Head" has been subjected to some mistake. These occur for a number of different reasons. They also vary from the Queen's Head being omitted from the stamp to where the Queen's Head has been cut due to a perforation error. The errors in this study all have a similar thread. The Head of Queen Elizabeth II has been subjected to some form of "mistake" resulting in the stamp not being what it is meant to be.

### Index

<b>Index</b>	<b>Pg.</b>
Introduction	1
Example of Missing Queen's Head	1
Index	1
Plan and Discussion	1
1979. Sir Roland Hill – miniature sheet	2
1973. British Explorers – Livingstone and Stanley	3
1973. British Paintings – Sir Joshua Reynolds	4
1968. Pinkie by Thomas Lawrence	5
1973. British Paintings – Sir Henry Raeburn	6
1967. Christmas Paintings. Adoration of the Shepherds	7
1968. Ruins of St. Mary Le Port	8
1990. RSPCA Prevention of Cruelty to Animals	9
1967. Paintings. "Master Lambton"	10
1999. "The Entertainers". Charlie Chaplin	11
1966. Battle of Hastings	12
1997. Castles. Caernarfon Castle	13
1986. History of the Royal Airforce	14
2003. Birds of Prey	15
1962. National Productivity Year	16



### **Plan and Discussion**

The study takes on the format of looking at the different Queen Elizabeth II Head errors. It includes errors where the Queen's Head is omitted completely to stamps where the Queen's Head still appears on the stamp but in a different format. Other stamps have the Queen's Head omitted together with other essential information which was meant to be in the same colour as the Queen's Head. Each individual stamp is studied so as to gain knowledge of its background and certain other relevant factors. The mistake is looked at and compared to the stamp as it should have been. In general, the error is predominantly displayed, whilst the way the stamp should have been is also on the page. Where available, other useful and relevant information with respect to the error is also given.

**24<sup>th</sup> OCTOBER 1979**  
**SIR ROWLAND HILL – MINIATURE SHEET**

Four values – 10p (Sir Rowland Hill), 11½p (Postman circa 1839), 13p (London Postman circa 1939), 15p (Woman and young girl with letter 1840) – comprising the miniature sheet which is marked the "Death Centenary of Sir Rowland Hill".

Designed by E Stamp.

Various colours – with Queen's Head in gold.

Perforation 14 x 15

Printed Photogravure by Harrison in sheets of 9 "miniature sheets" [3 x 3]. All over phosphor.

5,230,000 miniature sheets sold.

**Gold missing:** Resulting in the Queen's Head being omitted from all four stamps on the miniature sheet. It is believed that 36 examples exist with only the gold missing, and a further 36 examples with both the gold and the phosphor missing. Hence a total of 72 such miniature sheets with the Queen's Head omitted. There are also a few known first day covers with the Queen's Head omitted. Tom Pierron in "The 2005 Catalogue of Great Britain Stamp Error and Varieties" states that there is "one first day cover" with gold missing. However, it is known that there are definitely more than one in existence.



The above: (left) miniature sheet with the Queen's Head missing shows two philatelic aspects. Firstly, how striking certain colour omissions are – particularly when it is of a prominent aspect of the stamp. Secondly, how rare such an error is. Of the over five million miniature sheets sold, only about 76 are known to have the Queen's Omitted.

**18<sup>th</sup> April 1973**  
**3p. BRITISH EXPLORERS.**

Block of four with Queens Head omitted

3p. "Traffic Light". Right hand top corner block of four gold omitted. (David Livingstone and H.M. Stanley). Printed in a pair format with the one stamp having head and shoulders of Livingstone and the other head and shoulders of Stanley. From set of 5 stamps.

Designed by Marjorie Saynor.

Orange-yellow, light orange-brown, grey-black, light turquoise-blue, turquoise-blue and gold. All over phosphor. Queen's Head printed in gold and then embossed.

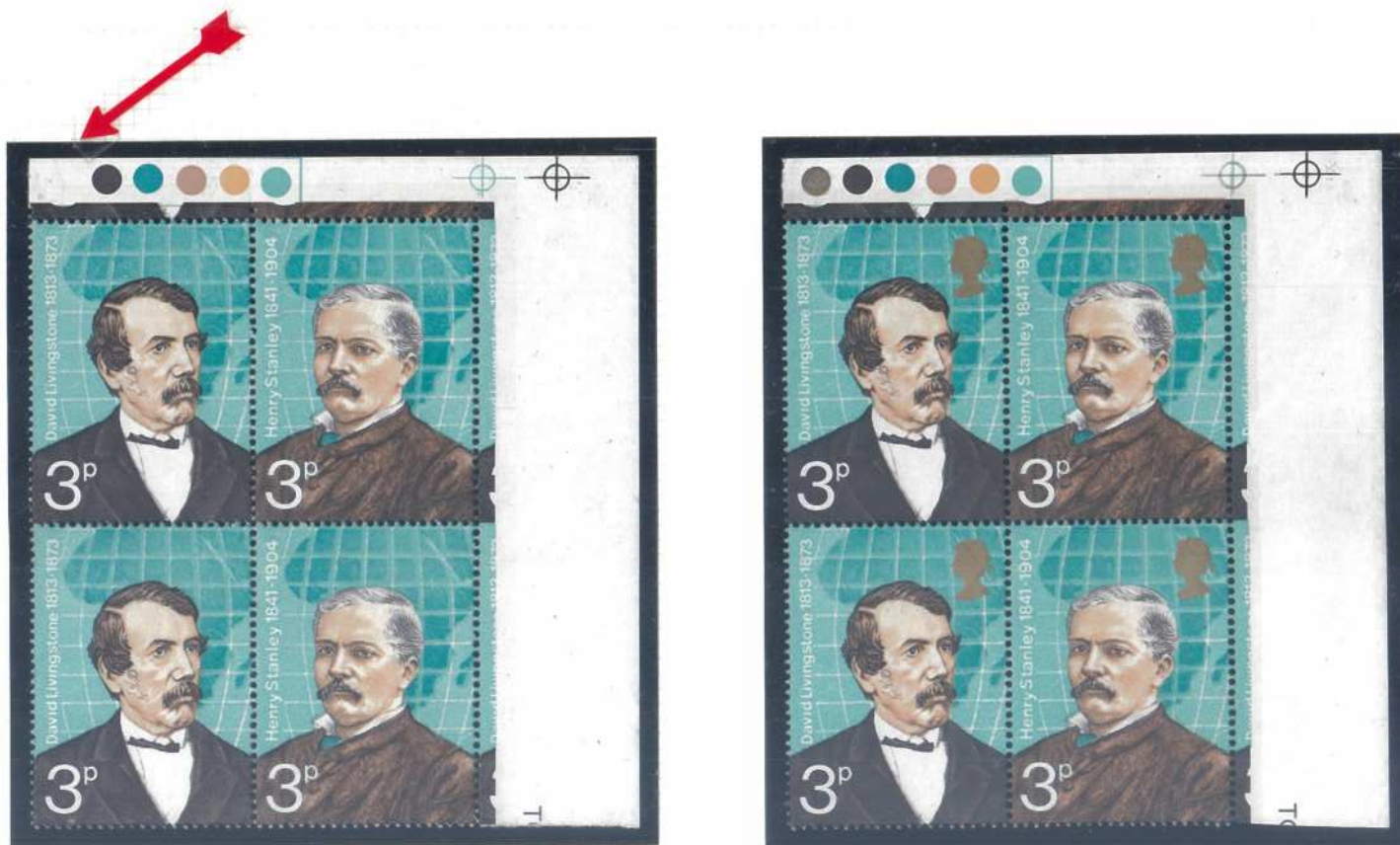
14 x 15 Perfs.

Sheets of 10 x 10 (50 pairs per sheet). Printed photogravure by Harrison.

28,131,400 pairs sold.

**Gold missing:** resulting in the Queen's Head being omitted.

150 Mint pairs and 2 first-day covers, both cancelled "Newport, Isle of Wight". In addition 200 mint pairs known to exist with both the gold and phosphor being omitted. Hence, a total of 350 pairs could exist, with the Queen's Head being omitted.



The 3p "Traffic Light", right hand top corner block of four with gold being omitted and hence the Queen's Head not appearing. Alongside, the block as the stamp should be. The traffic light block above, with the gold omitted has resulted in the colour gold in the "Traffic Light" also being omitted. Alongside the "Traffic Light" block as it should be. The gold colour distinctly appearing in this block. In this issue the "gold" head can be removed by using an eraser. However, this usually results in the remnants in the gold remaining or alternatively damaging the base of the stamp. In our example (above) it can be seen from the "Traffic Light" and also from the stamps themselves that all is in a perfect condition and hence the gold could not have been removed from the stamps.

4<sup>th</sup> JULY 1973

**3p. British Paintings**

"Self Portrait". 200<sup>th</sup> Birth Anniversary of Sir Joshua Reynolds. Designed by S. Rose. From a Set of 4 Stamps. Rose, new-blue, jet-black, magenta, greenish-yellow, black, ochre and gold. "All over" phosphor. Queen's Head printed in gold and then embossed. 15 x 14 Perfs. Sheets of 10 x 10 [100] Stamps. Printed 'photogravure' by Harrison.

**Gold missing.** Resulting in the Queen's Head being omitted. 100 Mint stamps known to exist with the Queen's Head missing.



Block of 4 of the 3p stamp with the Queen's Head omitted. The set was issued with the Queen's Head printed in gold. Below the block of 4 stamps [above], is the full set as it was meant to be including the 3p. From left to right - 3p [Self Portrait of Sir Joshua Reynolds], 5p [Self Portrait of Sir Henry Raeburn], 7½p [Nelly O' Brien - by Reynolds] and 9p [Rev. N. Walker" - The Skater - by Raeburn].



Nr. 802 a

Warenzeichen  
geschützt  
Made in  
Germany

**12th August 1968**

**1s. BRITISH PAINTINGS**

"Pinkie" by Sir Thomas Lawrence. Designed by S. Rose.

Mauve new-blue, greenish-yellow, black, magenta and gold. Two phosphor bands. Queen's Head embossed.

14 x 15 Perfs.

Sheets of 10 x 6. Printed by Harrison.

17,953,440 stamps sold.

**Gold and phosphor missing**, resulting the Queen's Head and Value being omitted.

60 Mint copies known to exist with the Queen's Head, value and phosphor missing. Also 12 known copies with just the gold missing.



Nr. 802 a

Warenzeichen  
geschützt  
Made in  
Germany

Above is the enlargement of the "Pinkie" 1s painting stamp. The enlargement clearly shows that the Gold has been omitted and was never on the stamp. The reason, for this study, being that it is known that the Gold can be removed from the face of the stamp. However, such will result in damage and scratching to the stamp.

The rarity of such an error is also illustrated by the number of stamps sold as opposed to the number which has the Queen's Head omitted. Out of the almost 18 million of this stamp which were sold, only 72 are known to have the Queen's Head omitted.

**4th July 1973**  
**5p. BRITISH PAINTINGS**

Sir Henry Raeburn. 1756 – 1823. (Self portrait). 150<sup>th</sup> Death Anniversary.  
 Cinnamon, greenish-yellow, new-blue, light-magenta, black, yellow-olive and gold.. Paper, "all over" phosphor.  
 14 x 15 Perfs.  
 Sheets of 10 x 10. Printed by Harrison.  
 8,372,500 stamps sold.

**Gold missing**, resulting in the Queen's Head being omitted.  
 200 mint copies known to exist with the Queen's Head missing.



The 5p Sir Henry Raeburn block of 4 – right bottom block of 4 – with gold colour missing. From the traffic light control strip, it can be also seen that the gold is missing. A single of the stamp as it was issued, with the Queen's Head is also above.



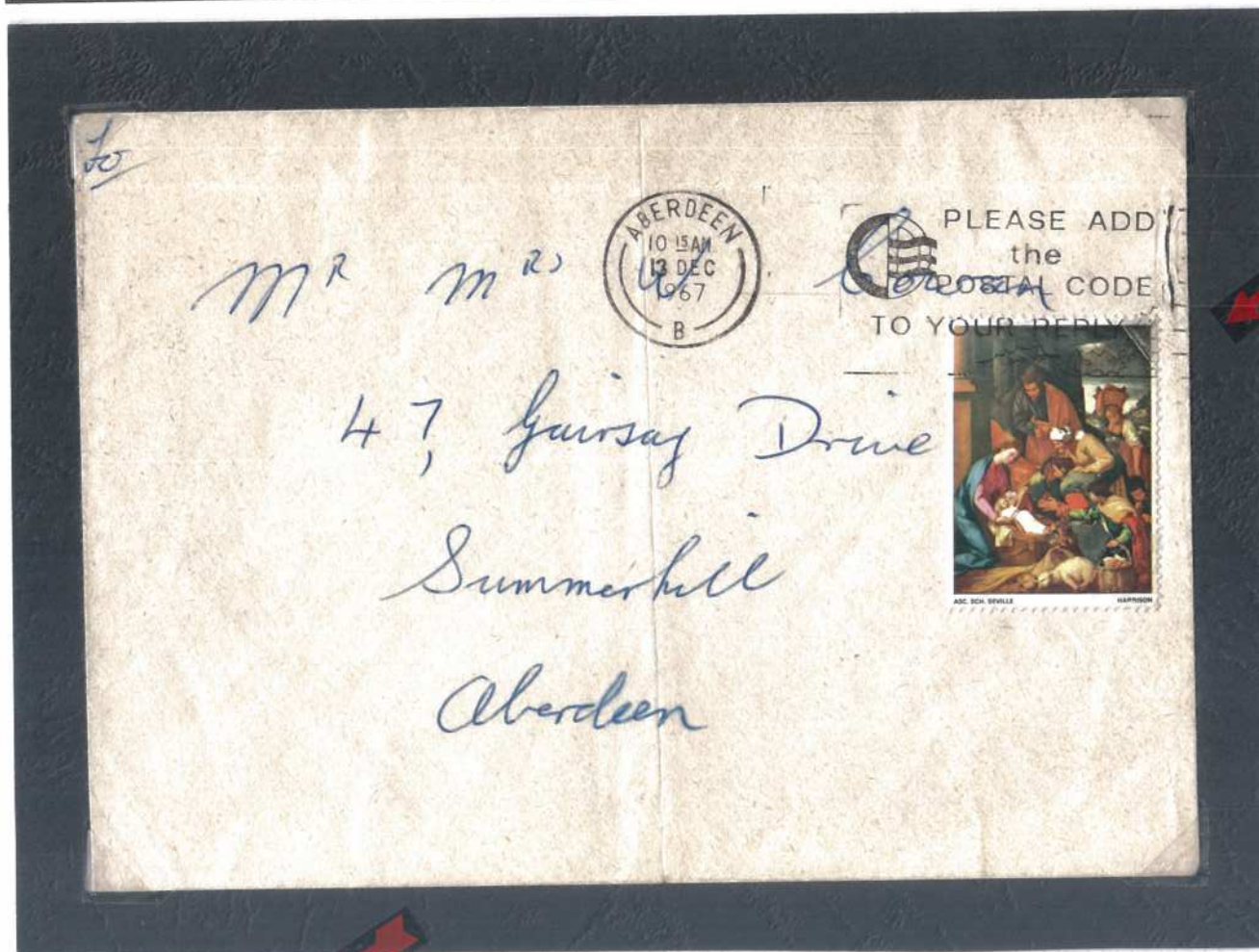
Nr. 802 a

Warenzeichen  
 geschützt  
 Made in  
 Germany

**27<sup>TH</sup> NOVEMBER 1967 - CHRISTMAS PAINTINGS 3d**  
**Queen's Head and Value Omitted**

"The Adoration of the Shepherd's". [School of Seville]: From set of three stamps.  
 Designed by S. Rose. Christmas Paintings.  
 14x15 Perfs.  
 Olive-yellow, rose, blue, black and gold.  
 Printed photogravure by Harrison. Sheets of 12x10. (120 stamps)  
 270 349 845 copies sold.  
 Chalk surfaced paper. One phosphor band.

Gold omitted: Results in Queen's Head and value not appearing on the stamps. 200 mint examples are thought to exist. Pierron does not list any used examples.



2

3



Nr. 802 a

Warenzeichen  
 geschützt  
 Made in  
 Germany

**Above**

1. Commercially used envelope with 3d "Christmas Paintings" stamp, with Gold omitted. Envelope pasted in Aberdeen at "10.15 am" on 13 December 1967.
2. A mint example of the same stamp with the identical error. The result is the Queen's Head and the value are omitted.
3. The complete set as issued clearly illustrates the error on the 3d. The other two values in the set are the 4d. "Madonna and Child" (Murillo) and the 1s6d. "The Adoration of the Shepherds" (Louis le Nain).

**12<sup>th</sup> August 1968. British Paintings.**  
**1s6d. "Ruins of St. Mary Le Port". Queen's Head and Value Omitted.**

"Ruins of St. Mary Le Port". Painted by John Piper. From set of four stamps designed by S. Rose. Slate, orange, black, mouve, greenish-yellow, ultramarine and gold.  
Queen's Head and value in gold.  
14 x 15 Perfs. Two phosphor bands.  
Printed photogravure by Harrison in sheets of 10 x 6 [60 stamps].  
8,878,440 copies sold.

Queen's Head and value omitted. Right hand top corner marginal traffic light block of 6, with gold omitted. This results in the Queen's Head and value missing. The dots of the traffic light clearly show the omission of the gold. 90 stamps, with gold omitted are believed to exist.  
Together with the traffic light block [below] is the same block as it is meant to be. Tom Pierron [The 2005 Catalogue of Great Britain Stamp Errors and Varieties] indicates that only one such traffic light block, with gold missing exists.



Nr. 802 a

Warenzeichen  
geschützt  
Made in  
Germany

**23 January 1990 – Queen’s Head and Value Missing**  
**150<sup>th</sup> Anniv of Royal Society for Prevention of Cruelty to Animals**

2 values with Queen’s Head and value missing, from set of four stamps

Perforation: 14 x 14.5

Printed by Questa in sheets (5 x 10 x 2 panes)

Designed by T Evans

The 20p Kitten and the 34p Duckling have been discovered with Silver missing. This results in the loss of the Queen’s head and value.

**20p Kitten:** One sheet plus a part sheet with silver missing came from a post office in Devon, England. A total of 135 mint and several used have been discovered.

**34p Duckling:** A cylinder block as well as 67 mint examples with silver missing have been discovered.

Below are the 20p and 34p with Silver missing. The original set is also shown for comparison. Of the 20p Kitten 33,735,600 copies sold. Of the 34p Duckling 5,990,700 copies sold.



Nr. 802 a

Warenzeichen  
geschützt  
Made in  
Germany

**1967. 4d. PAINTINGS. "MASTER LAMBTON"  
QUEEN'S HEAD AND VALUE OMITTED ON THREE STAMPS**

The Certificate 72,869 at the back of the exhibit page of the B.P.A. Expert Committee, London, summarises the errors on the pane: "The Committee is of the opinion that the GREAT BRITAIN: 1967 Paintings 4d "Master Lambton", on chalk-surfaced paper, 2 phosphor bands, Perf 14 x 15, left sheet marginal pane of 15 stamps 13-15 variety Gold (Queen's head & value) omitted remainder with Queen's head and value at foot and once in top marginal selvedge (SG748a/var), unused with full original gum, is genuine".



3A

IB.

IC.

ID.

IE.

IF.



Nr. 802 a

Warenzeichen  
geschützt  
Made in  
Germany

**1<sup>st</sup> June 1999. "The Entertainers". Silver Missing.  
64p. Charlie Chaplin. Film Star – "Cinema".**

From set of four values: 19p Freddie Mercury ("Popular Music"); Bobby Moore ("Sport"); 44p Dalek - from Dr. Who – ("Television"); and 64p Charlie Chaplin ("Cinema").

64p designed by R. Steadman with photo by Enschede.

Colours: Greenish yellow, bright magenta, new blue, grey-black and silver.

Perf 14x14½. Two phosphor bands.

**Silver Missing:** Resulting in the Queens head, value and the inscription being omitted. Neither the 2015 Stanley Gibbons Great Britain Concise Catalogue nor the Tom Pierron Catalogue of Great Britain Stamp Errors and Varieties have any reference to this error.



Above, unmounted mint, the 64p Charlie Chaplin stamp from The Entertainers set, with the silver omitted. It can be seen that the head of Queen Elizabeth II, the value as well as the inscription do not appear at all. Below it the full set of four stamps as issued. The reason for the error could either be that the sheet never went through the printing process where the silver was printed onto the sheet or alternatively that the silver ink ran dry during printing, for some or other reason, not affecting the entire sheet.

**14th October 1966**  
**6d. BATTLE HASTINGS**

Norman Ship. 900th anniversary of the Battle of Hastings. Designed by D. Gentleman.  
 Black, olive-green, violet, blue, green and gold. Queen's Head die-stamped.

15 x 14 Perfs.

Sheets of 6 x 10. Printed by Harrison.

12,012,328 non-phosphor and 2,820,360 phosphor stamps sold. [Total being 14,832,688].

Left bottom corner block of 12 with the 5th bottom stamp of row one having gold missing, resulting in the Queen's Head being omitted. The result is that the stamp with the omission is alongside stamps with the Queen's Head.

It appears as if some object came between the printing press and the paper at the position of the Queen's Head, whilst the gold was being printed. The result is that the ink did not reach the paper.

It is believed that there are 40 mint copies, where the gold has been omitted in the non-phosphor and a further 10 to 20 of the phosphor issue. This makes a total of somewhere between 50 - 60 stamps with the Queen's Head missing.

It is not known whether there are any further examples where the stamp with the omission is in pair with the stamps which have the Queen's Head.



Nr. 802 a

Warenzeichen  
 geschützt  
 Made in  
 Germany

29<sup>th</sup> JULY 1997.

**£1.50. CASTLES. QUEEN'S HEAD OMITTED**

Caernarfon Castles. From a set of four values. Taken from photos by Prince Andrew, Duke of York. Deep Claret and gold. Non fluorescent coated paper. The Queen's Head is printed in optically variable ink which changes colour from gold to green when viewed from different angles.

15 x 14 Perfs. One elliptical hole on each vertical side.

Sheets of 5 x 5 x 4 panes. Printed by Enchedé.

**Optical ink missing**, resulting in the Queen's Head been omitted. Of the examples which exist without the Queen's Head, two are unused whilst 8 are used. Of the 8 used examples, 4 are in a block post-marked "Middx. 10 JU/99". Two are post-marked "Shropshire". One is dated 14<sup>th</sup> December 1999, whilst the other 16<sup>th</sup> December 1999. This could indicate that a whole sheet had been sold in that area. A copy post-marked "Staffordshire 16. DE. 99" is in a pair with a normal, indicating that in this instance a foreign body prevented the ink being applied with respect to the Queen's Head. Thus a total of 8 used copies are believed to exist.

See example below ["Shropshire 16.12.1999"] on paper, with Queen's Head missing. This is one of the ten copies known to exist. A standard used example as well as a standard mint example [with Queen's Head] is also below.

Enlarged copy, thus distinctly showing the word "Shropshire" and the date "16.12.1999". This enlarged copy is one of the ten examples known to exist.



Nr. 802 a

Warenzeichen  
geschützt  
Made in  
Germany

**16<sup>th</sup> September 1986**  
**22p. HISTORY OF THE ROYAL AIR FORCE**

Lord Tetder and Hawker Typhoon JP  
 1 of 5 stamps issued to celebrate the 50<sup>th</sup> anniversary of the first R.A.F Commands.  
 Pale turquoise-green, greenish-yellow, magenta, new-blue, black and grey-black.  
 Phosphorish paper.  
 14½ x 14½ Perfs.  
 Sheets of 15 x 10 x 2 panes.  
 Printed by Harrison.  
 7,124 200 stamps sold.

**Stamps in the second column lack the Queen's Head, those in the first column, lack the face value.**

30 Mint copies exist with the Queen's Head missing.  
 30 Mint copies exist with the face value missing.

The error is said to have occurred on three consecutive sheets on which stamps in the first column had the value omitted, and in the second column the Queen's Head omitted.



Nr. 802 a

Warenzeichen  
 geschützt  
 Made in  
 Germany

14<sup>th</sup> January 2003

**BIRDS OF PREY**

Block of 10 stamps. 5 being the Barn Owl and 5 being the Kestrel. Designed by John Gibbs. From photographs by S. Dalton.

Brownish-grey, black, greenish-yellow, magenta and new blue. Phosphor background.

14 x 14½ Perfs.

Sheet consisting of 6 blocks of 10 stamps. Printed litho by Walsall.

Loss of the Queen's Head, value and inscription on the lower line of five stamps. The phosphor is also missing from all stamps in the block.

34 blocks of 10 as well as two first day covers are known to exist. The brownish-grey has been omitted which results in the Queen's Head, the inscription "1<sup>st</sup>" and the words on the bottom line being left out.



Nr. 802 a

Warenzeichen  
geschützt  
Made in  
Germany

14<sup>th</sup> November 1962  
**3d. NATIONAL PRODUCTIVITY YEAR**

From set of three national productivity year stamps. 2½d, 3d & 1s3d. Designed by David Gentleman.

Light blue and violet Two phosphor bands.

Perfs 15 x 14. Chalk surfaced paper.

Sheets of 6 x 20 x 2 panes. Printed photogravure by Harrison.

195,900,000 stamps sold.

**Queen's head omitted**, this is a result of the light blue missing. The error came to light when Stanley Gibbons, bought the effected pane from its finder. There were a total of 76 such examples, but many, though missing the Queen's Head included traces of the light blue elsewhere on the stamp. The exact number, without the light blue at all, is thought to be less than 30.



Marginal block of 9 stamps. The first two vertical rows, has the light blue dropped by 2mm. The right vertical three stamps have only partial blue. The right bottom stamp has the Queen's Head completely omitted. This results in a "pair" where the Queen's head appears on the left stamp whilst it is omitted on the right stamp. It is not known how many of these errors exists in a "pair" format.