



**MALTA; The "Cinderella" Set.  
KING GEORGE V, 1926-1939, "Shield" sets.**

The pence values of this set show a circular profile head of the King with a shield in the 'colours' red and white of Malta. The shilling values are all pictorial, showing scenes of Malta.

These stamps were printed by Messrs. Waterlow & Sons.

Unfortunately their archives are not available for study.

This set has not been popular with collectors, reflected in little published research. This is exacerbated by the lack of original material as well as overprinting details available for study.

This exhibit is an endeavour to better understand the complexities of this issue. The printing tables are made from information gleaned from the Crown Agents Records. More study is required to correlate the colour nuances to specific printings.

**Printing Table 1, set inscribed "POSTAGE".  
Number of Sheets sent to Malta per order.**

Denomination. Order no. & Date.	<- ½d SG157	½d 158	1d 159	1½d 160	120 2d 161	Set 2½d 162	3d 162a	4d 163	4½d 164	-> 6d 165	<- 1/- 166	1/6 167	2/- 168	80 2/6 169	Set 3/- 170	5/- 171	-> 10/- 172	Despatch date & remarks.
5102	13125	22750	16250	43750	1750	7000	1750	1315	1315	1750	1230	695	382	365	347	145	140	Pence, 1-26. Shilling, 19-2-26. New Issue. Specimen required PMG + Supplies for Dealers.

**Printing Table 2, set inscribed "POSTAGE & REVENUE".  
Number of Sheets sent to Malta per order.**

Denomination Order no. & Date.	<- ½d SG 193	½d 194	1d 195	1½d 196	120 2d 197	set 2½d 198	3d 199	4d 200	4½d 201	-> 6d 202	<- 1/- 203	1/6 204	2/- 205	80 2/6 206	set 3/- 207	5/- 208	-> 10/- 209	Despatch Date & Remarks.
7527 20-12-31		34 254	8 750	17 488						1 050								1/11-1-32.
7744 28-6-32					13 010													7-7-32.
8085 21-6-33	8 054	24 826		40 718	16 630	7 997	2 625		630	630								28-6-33 to 20-7-33.
8207 7-9-33.			20 753															14/29-9-33. Very Urgent.
8624/1 14-9-34		34 575					2 625			1 000			1 237					21/28-9-34. Urgent.
4 9240 19-11-35.			16 861															6/14-12-35.
9450 1-5-36.	8 564	25 070	41 667															½d Urgent. 8-5/12-6-36. 22-5/29-6-36.

These tables may not be complete.

Details are as follows:- All printed on ordinary Multi Script CA watermark paper.

Pence values. Portrait and Shield design. Typographed, in two panes of 120 set, 10 rows of 12, one above the other. All plate no. 1. Single colour stamps used single working while two colour stamps used double working.

Shilling Values. Pictorial design. Intaglio printed in sheets of 80, vertical designs-8 rows of 10, and horizontal designs-10 rows of 8 stamps. No plate numbers were used. The 1 shilling is a single colour stamp, thus printed from a single plate. All other values were printed from double working plates.

The overprinting "POSTAGE AND REVENUE" was done in Malta by the Government Printer, using existing stocks from the first printing.

**References:**

*Own notes made from viewing Crown Agents Plate Register held by the British Library. 2018.*

1. C. FRASER and ROBSON LOWE, *The Die Proofs of Waterlow & Sons, Part 1 Great Britain & the Empire to 1960.* London, 1985.
2. MALTA STUDY CIRCLE, *MALTA, The Postal History & Postage Stamps, 1980, and Study Paper 43, 1987.*
3. PAUL & BARBARA KAYFETZ; *Malta: Finding a Treasure Trove of Information. Collectors Club Philatelist, 1988.*
4. *Observations of Low Value stamp colours, papers and gum. J. De Battista. 2016.*

King George V.

1926 (6 Apr)-27. "Shield Set".

Inscribed "Postage".

Designer: John Harrison.

Printing: Typo. Waterlow & Sons, Ltd.

Wmk: Mult. Script CA.

Perf. 14,75 x 14, comb.

Issue dates shown for 1st printing.



6-4-26  
Brown.



Darker brown



5-8-26  
Yellow green.



Green



1-4-27  
Rose red.



Paler rose red.



7-10-26  
Chestnut.



Paler chestnut.



1-4-27  
Greenish grey.



Green grey.

All stamps printed from 240 set plates,  
in 2 panes of 120, 10 x 12, one above the other.  
¼ d to 2 d are printed from single working plates.

King George V.



1-4-27  
Blue.



Darker blue.



1-4-27  
Violet.



Deep violet.



6-4-26  
Black & red.



Black &  
paler red.



6-4-26  
Lavender & ochre.



Lighter ochre.



5-5-26  
Violet & scarlet.



Both colours  
lighter.

2½ d & 3 d are printed from single working plates.  
4 d to 6 d are printed from double working plates.

King George V.

Printing : Recess.

Perf. 12.5 line.

All printed from 80 set plates.,  
10 x 8 for horizontal & 8 x 10 for vertical stamps.

1/- stamps from single working and



Black.



Grey black.



Black & purple.



Paler purple



5-5-26.  
Black & green



Paler green



Black & green.



Paler green



Black &  
Vermilion.



Both colours paler



Black & blue.



Both colours paler



9-2-27.  
Black & carmine.



Paler centre

All the stamps in this issue have recognisable colour variations.  
The reason for this is not known.



Post Cards with "Shield" design. Printed by Waterlow & Sons, Ltd  
 ½ d for Local use issued early 1927. Earliest date of use recorded as 27 April 1927.  
 Quantity issued is not known.  
 1½ d for International use issued May 1927. Earliest date of use recorded as 11 May 1927.  
 Crown Agents records show that 53,040 cards were dispatched to Malta.



**Double Rate, Registered Cover.**

**Stamps:** 1½d, 2d, 2½d optd set of 1926. **Rate:** 2½d + 2d Foreign postage, from SP 27 to MY 41, with 3d Registration Fee.

**Canceller:** GPO-21c, cated JA 31. 29, known used between 1922 and mid 1930's.

**Registration Label:** RL-VAG 37, known used between MR 25 and FE 32.

1928 (1 Oct -5 Dec).

1926 set overprinted

"POSTAGE AND REVENUE".

All details are the same as the previous set.

All Issued on 1 October 1928.

*The change in colour of the 1d and 1½d stamps was necessitated by a change in postal rate announced on 5 December 1928, but release date is not known.*



Brown.



Darker brown.



Yellow green.



Yellow green.



Red.



Rose red



Red.  
Thicker paper.

*The Colour, Gum and Paper changes evident in the stamps of all three of these issues points to there being more than one printing for each. As yet, no details are known.*



chestnut



chestnut



Lighter Chestnut.

The change in colour of the 1d and 1½d stamps was necessitated by a change in postal rate announced on 5 December 1928, but release date is not known. They are thus only known Overprinted.



Chestnut..



Chestnut..



Chestnut..



Chestnut..



Darker Chestnut.



Rose red.



Red



Rose red.



Rose red.



Red.

King George V.



Green grey.



Green grey.



Blue.



Blue.



Blue.



Darker blue.



Darker blue.



Violet.



Violet.



Darker violet.

King George V.



Black & red.



Black & orange red.



Lavender & ochre.



Violet & scarlet.



Black & Salmon.



Lighter ochre.



Both colours lighter.

King George V.

1928 (1 April). Air Mail.

6d stamp of 5 May 1926,

Overprinted at the Govt. Ptg. Office, Valletta and issued to mark the inauguration of the London-Cairo-Baghdad-India air service.

Details concerning the overprinting are not available.



Violet & scarlet



Deep violet & Deep scarlet



**Stamp:** 6d, 1926 Violet & scarlet, Optd 'AIR MAIL', used until 2 JU 40.

**CDS:** Sliema B.O. (Branch Office)(Slm-22), used JA 30 to JU 40.

AIR MAIL, (AIR-2), Correctly used to cancel adhesives, used 17 JU 31 to 28 SP35.

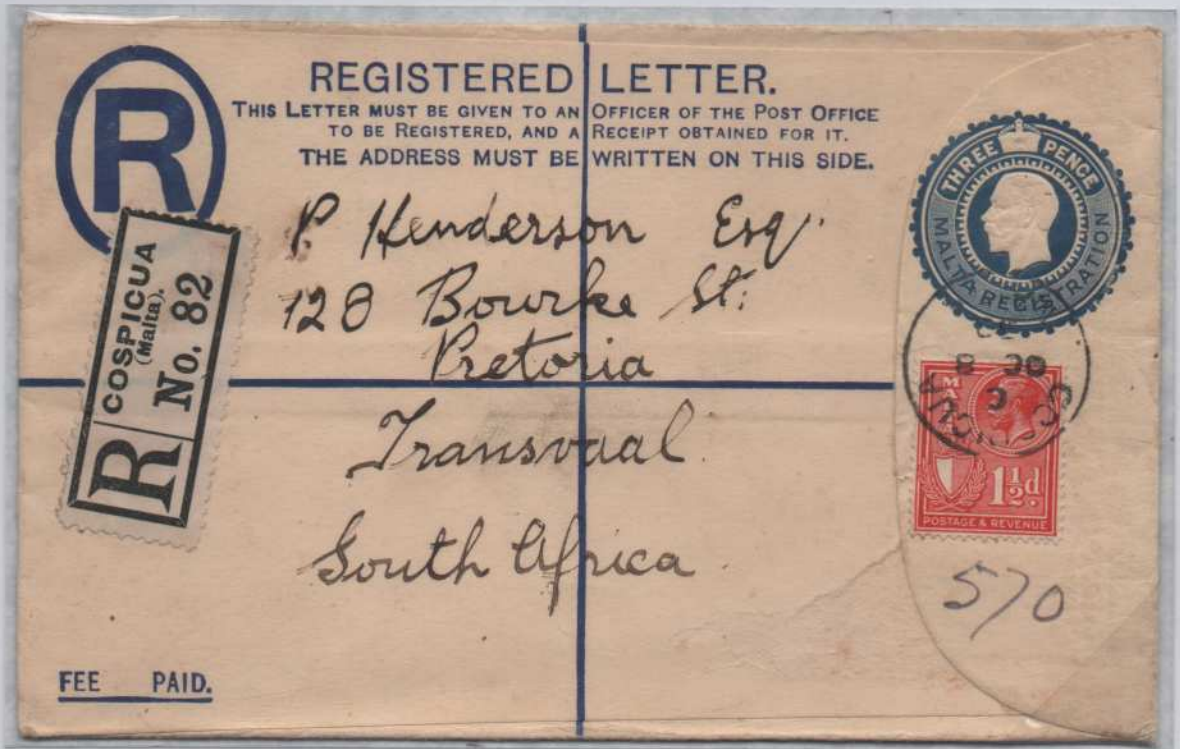
Rondebosch,(Putzel 22), used on redirection.

On Back:- CAPE TOWN/KAAPSTAD.5.(Putzel 194), as Arrival mark. Shown below. (75%)





Stamp : 4½d Lavender and Ochre, of the 1928 set.  
 Rate : 1½d, Imperial from SP 22 to FE 36 .and 3d Registration, from 1922 to 1940.  
 Cancellor : GPO- 21d, dated OC 27 28. Known used between 22 MY 22 and 1 JU 34.  
 Registration Label : VAG-37, known used between MR 25 and FE 32.



Postal Stationery.  
 Stamps : 1½d, of the 1930 set.  
 Rate; 1½d Imperial, from SP 22 to FE 36, with 3d Registration Fee.  
 Cancellor : COS -22 dated OC 8 32, known used between JY 22 and AP 37.  
 Registration Label : RL-COS-32, known used between JY 21 and AP 37.

Printing: Recess.  
Perf: 12,5 line.



Black.



Black.



Black & purple.



Black & purple.



Black & green



Black & green



Black & green



Black & green



Black & carmine.



Black & carmine.



Black & vermilion



Black & vermilion



Black & blue.



Black & blue.

King George V.

1930 (20 Oct). "Shield Set".  
Inscribed "POSTAGE - REVENUE".  
Details as before.

UPU SPECIMENS.  
Perforated diagonally.  
Quantity issued is not known.



Printing: Recess.  
Perf. 12,5 line.



*All Malta UPU Specimens from this issue onwards are perforated.*

King George V.

1930 (20 Oct). "Shield Set".  
Inscribed "POSTAGE - REVENUE".  
Details as before.



Brown.



Darker brown



Yellow green.



Green



Chestnut.



Paler chestnut.



Rose red.



Paler rose red.



Greenish grey.



Green grey.



Black & red.



Blue.



Violet.



Lavender & ochre.



Lavender & ochre.



Lighter ochre.



Violet & scarlet.



Both colours lighter.



Black & green.



Black & vermilion.



Black.



Grey black.



Black & purple.



Both colours lighter.

**Printing and Overprint Flaws.**



Unrecorded Printing Flaw,  
Plate position and whether permanent or  
Transient are not known.



Block from top pane showing  
Pillared Gutter margin between top  
and bottom panes.



Damaged 'D' in  
AND.



Both blocks show the damaged 'D' in overprint,  
which occurs on each stamp in the 2nd vertical  
row of each pane and denomination.



Plate numbers appear above stamps 2 & 11 in the top pane  
and below stamps 2 & 11 in the bottom pane.  
This is stamp 11, Top pane as it does not have broken 'D'.