

1934 CARTIER QUADRICENTENARY

Introduction

On July 1st, 1934, CANADA issued a blue 3c stamp to celebrate the 400th anniversary of Jacques Cartier discovering Canada. Designed by George Arthur Gundersen, the picture was engraved by Bruce Hay, using an 1885 engraving showing Cartier on the deck of his ship: La Grande Hermine. The British American Bank Note Company printed this stamp in sheets of 200, divided by a vertical gutter into panes of 100 stamps. Two plates were produced.

Purpose

To show a comprehensive exhibit of this commemorative stamp in the classic presentation of pre-production material, production layout and varieties, and a cross-section of usages, showing rates using unusual and exceptional covers.

LADY'S (calling card) COVER
Mailed on the FIRST DAY OF ISSUE
JULY 1st 1934



Rate: 2¢ (Postage) + 1¢ (Wax) = 3¢ domestic rate
CDS: TORONTO, TERM'L, STN. A. ONT. JUL. 1 34
Front receiver stamp: POWELL RIVER B.C. JUL. 6 34

PLAN & HIGHLIGHTS

1. Pre-production Proofs: a.k.a. imperforates, including a PLATE PROOF BLOCK, 1 of only 5 recorded.
 2. Production Material: showing the vertical gutter, all 8 plate blocks, and all varieties, including the exhibitor's DISCOVERY of a major variety.
 3. Commercial Usages: Domestic, US, Paquebot, Preferred, Empire, including Registered, Airmail, and Multiples (2, 3, 4, 6, of the 3c stamp).
- GREEN dots to indicate some of the more remarkable material.

PRE-PRODUCTION

1934 CARTIER QUADRICENTENARY

PROOFS

a.k.a. as IMPERFORATE VARIETIES



The first sheet printed was on wove (stamp) paper and not perforated. It was examined carefully to "proof" the sheet to be acceptable for issue.

PROOF PLATE BLOCK (Imperforated)



Only 2 UL Proof Plate Blocks exist of the 5 existing for all positions.

However superficial scratches were overlooked leading to a number of minor varieties.



Line through LL '3' of '1534' extending through frame to left of UL scroll. Line through LL '3' of 'CENTS' extending from frame to 'C' of 'CENTS'.

PRODUCTION

1934 CARTIER QUADRICENTENARY

PLATE NO. 1

two printing plates were used.



HAIRLINE from HAND in UL stamp

PRODUCTION

1934 CARTIER QUADRICENTENARY

PLATE NO. 2

two printing plates were used.



PRODUCTION

1934 CARTIER QUADRICENTENARY

The VERTICAL GUTTER
CONSTANT VARIETIES

Sheets of 200 stamps were printed with a Vertical Gutter to guillotine into 2 sheets of 100. 61,850 sheets were so guillotined, and 1000 sheets were perforated down the gutter, and severed; but only 50 such sheets were left unsevered.

GUILLOTTINED GUTTER
Adjacent Block



From 1 of the 61,850 sheets so guillotined

PERFORATED GUTTER Adjacent Block
confirmed by selvage marking



From 1 of the 1,000 sheets perforated down the gutter

INTER-PANNEAU STRIP with perforated gutter left intact



From 1 of the 50 sheets left unsevered and left intact.

VARIETIES

1934 CARTIER QUADRICENTENARY

TOPLESS-4
NEW DISCOVERY CONSTANT PLATE VARIETY

Variety: the numeral "4" in "1534" in UL corner of stamp has a decapitated top.



mint stamp multiple copies to show constancy

Exhibitor's New Discovery was submitted to and accepted by "THE UNITRADE SPECIALIZED CATALOGUE OF CANADIAN STAMPS" and will be included in their next edition as a Major Variety.

TOPLESS-4 Examples



Block print corner card on cover with variety.

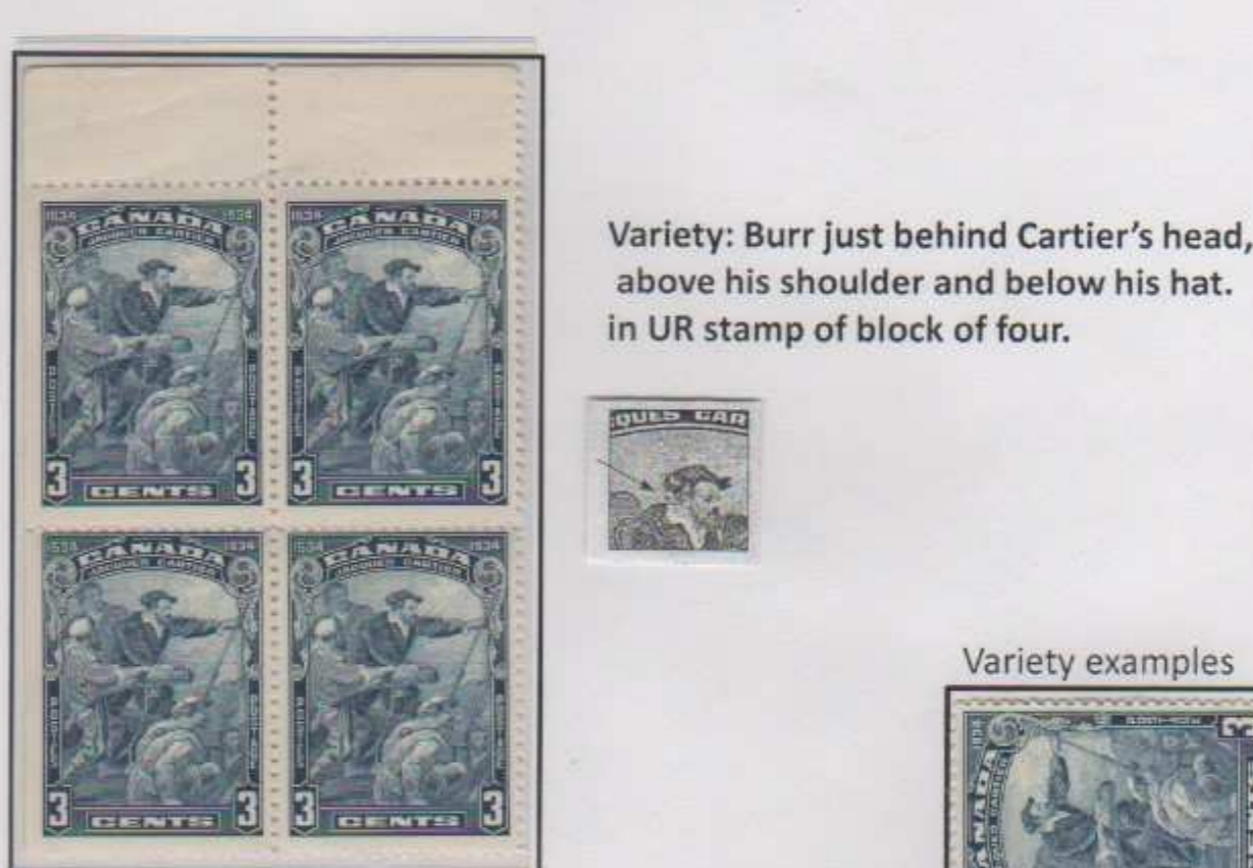


CDS hamper: WHEATLEY ONT Oct. 8, 1934 Domestic letter rate 3c

VARIETIES

1934 CARTIER QUADRICENTENARY

BURR on SHOULDER
CONSTANT PLATE VARIETY



Variety: Burr just behind Cartier's head, above his shoulder and below his hat. in UR stamp of block of four.

Variety examples



Printed corner card on commercial cover with variety.



CDS duplex hamper: CALABOGIE ONT AUG. 24, 19. Domestic letter rate 3c

VARIETIES

1934 CARTIER QUADRICENTENARY

VARIETIES in BLOCKS of four
KNOWN VARIETIES



'T' WHITE DOTS in LR stamp

HAIRLINE from HAND in UL stamp

White dots around 'T' of 'CENTS', as described in Hans Reiche's book

SCARFACE variety in LL corner of block adjoining Plate Block



USAGES

1934 CARTIER QUADRICENTENARY

DOMESTIC 3c COVERS

With historical CINDERELLA and REGISTRATION rate stamp.

LAVIOLETTE & CARTIER historical figures



LAVIOLETTE Cinderella by Societe St. Jean Baptiste. He was the first commandant of Trois-Rivieres, when it was established in 1634, and had the stockade built.

CARTIER & CARTIER historical figures



Sir George-Etienne CARTIER was co-premier of the Province of Canada, a Father and kingpin of Confederation (his 10c stamp for REGISTRATION)

USAGES

1934 CARTIER QUADRICENTENARY

CANADIAN PAQUEBOTS
FIRST PORT OF CALL: GLASGOW

PAQUEBOT GLASGOW DOUBLE CIRCLE PORT OF CALL cancel



Posted on board the British Steamship "Duchess of York" on the High Seas. (at top of envelope in now somewhat faded purple)

PAQUEBOT POSTED AT SEA GLASGOW CDS PORT OF CALL cancel



On backflap "CANADIAN PACIFIC" (CP had the sea mail contract for the Pacific).

Backstamp: East Angus P.Q. AM AU 25 34

USAGES

1934 CARTIER QUADRICENTENARY

LOCAL & US REGISTERED RATES
with BLOCK on Centennial cover or Postal Stationery

BLOCK on TORONTO CENTENNIAL REGISTERED LOCAL COVER



Local rate 2c + registration 10c = 12c block

BLOCK on 1c POSTAL STATIONERY US REGISTERED ENVELOPE



US postal rate 3c + registration 10c = 13c = 12c block + 1c Postal Envelope

USAGES

1934 CARTIER QUADRICENTENARY

DIFFERENT RATE MULTIPLES
AR REGISTERED and AIRMAIL

REGISTERED with ACKNOWLEDGEMENT RECEIPT (AR)



US rate 3c + Registration rate 10c + AR rate 5c = 18c using BLOCK & Plate PAIR

US AIRMAIL rate 8c + 1c WAR TAX (using TRIPLET but was rate confusion)



MAJOR RATE CONFUSION: US AIRMAIL rate was 8c but 1c WAR TAX, in effect for all domestic and US rates except US AIRMAIL, and was reduced to 6c on July 1, 1934.

USAGES

1934 CARTIER QUADRICENTENARY

CROSS-BORDER 3c RATE
ARCTIC and SHIP MAIL

Mailed from the Arctic station, BAFFIN ISLAND N.T.



The ship, R.M.S. NASKOPIE, annually serviced the Eastern Canadian Arctic, picking up mail for its 'one return trip south.

Mailed aboard the CPR ship, the S. S. PRINCESS ELIZABETH



Mailed JUL 28 1934, on the CPR, B.C. COAST SERVICE entering mail stream at the first Port of Call, VANCOUVER JUL 29 1934

USAGES

1934 CARTIER QUADRICENTENARY

INTERNATIONAL MAIL
and PREFERRED RATE EXCEPTION

To SHANGHAI, CHINA, INTERNATIONAL RATE 5c



Backstamp: SHANGHAI Slogan Cancel: "REGISTER ALL L ETTERS OF VALUE"

PREFERRED SEA MAIL RATE TO FRANCE: 3c



Backstamp: MARSEILLE ARRIVEE 23* 15 VII 1934.

USAGES

1934 CARTIER QUADRICENTENARY

SOUTH PACIFIC 3c EMPIRE RATE
PACKET BOAT or REGISTERED

Mailed aboard the N.Z. PACKET BOAT: R.M.M.S. AORANGI.



Walter J. McNulty
45 New York Avenue
Johnson City, N.Y.
U. S. A.

CPR had the Government Pacific Ocean mail contract and sub-contracted the South Pacific mail service to the Union Steamship Company, thus, qualifying the use of Canadian stamps on this N.Z. MARINE POST OFFICE

REGISTERED to AUSTRALIA



Backstamps:
VANCOUVER JUL 7 34
SYDNEY 6 AU 34
BRISBANE 7 AU 34
SOUTH BRISBANE 8 AUG 34

10c Registration (number 18517) + 3c Empire rate to Australia

USAGES

1934 CARTIER QUADRICENTENARY

BRITISH EMPIRE SEA MAIL RATE
and with PAIR for AIRMAIL

CANADIAN PACIFIC corner card for RR mail to sailing port for ENGLAND



London Stamp Club and Reading Room,
Philately House, St. Bride St.,
E.C.4, London, England.

BRITISH EMPIRE SEA MAIL rate 3c

Part by AIRMAIL to New York port to board S.S. Washington ship for ENGLAND



Domestic/US AIRMAIL surcharge 3c + BRITISH EMPIRE SEA MAIL rate 3c

1934 CARTIER QUADRICENTENARY

Introduction

On July 1st, 1934, CANADA issued a blue 3¢ stamp to celebrate the 400th anniversary of Jacques Cartier discovering Canada.

Designed by George Arthur Gundersen, the picture was engraved by Bruce Hay, using an 1885 engraving showing Cartier on the deck of his ship: *La Grande Hermine*.

The British American Bank Note Company printed this stamp in sheets of 200, divided by a vertical gutter into panes of 100 stamps. Two plates were produced.

Purpose

To show a comprehensive exhibit of this commemorative stamp in the classic presentation of pre-production material, production layout and varieties, and a cross-section of usages, showing rates using unusual and exceptional covers.

LADY'S (calling card) COVER

Mailed on the FIRST DAY of ISSUE

JULY 1st 1934




Rate: 2¢ (Postage) + 1¢ (War Tax) = 3¢ domestic rate

CDS: TORONTO . TERM'L, STN. A ONT. JUL 1 34

Front receiver stamp: POWELL RIVER B.C. JUL 6 34

PLAN & HIGHLIGHTS

1. **Pre-production Proofs:** a.k.a. imperforates, including a **PLATE PROOF BLOCK**, 1 of only 5 recorded.
2. **Production Material:** showing the vertical gutter, all 8 plate blocks, and all varieties, including the exhibitor's **DISCOVERY** of a major variety.
3. **Commercial Usages:** Domestic, US, Paquebot, Preferred, Empire, including Registered, Airmail, and Multiples (2, 3, 4, 6, of the 3¢ stamp).

 GREEN dots to indicate some of the more remarkable material.

PROOFS

a.k.a. as IMPERFORATE VARIETIES



The first sheet printed was on wove (stamp) paper and not perforated. It was examined carefully to "proof" the sheet to be acceptable for issue.

PROOF PLATE BLOCK (Imperforated)



However superficial scratches were overlooked leading to a number of minor varieties.



Line through LL '5' of '1534' extending through frame to left of UL scroll.

Line through LL '3' extending from frame to 'C' of 'CENTS'.



Only 2 UL Proof Plate Blocks exist of the 5 existing for all positions.

PLATE NO. 1

two printing plates were used.



HAIRLINE from HAND in UL stamp

PLATE NO. 2

two printing plates were used.



The VERTICAL GUTTER
CONSTANT VARIETIES

Sheets of 200 stamps were printed with a Vertical Gutter to guillotine into 2 sheets of 100.
61,850 sheets were so guillotined;
and 1000 sheets were perforated down the gutter, and severed;
but only 50 such sheets were left unsevered.

GUILLOTINED GUTTER
Adjacent Block



*From 1 of the 61,850 sheets
so guillotined*

PERFORATED GUTTER Adjacent Block
confirmed by selvedge marking



*From 1 of the 1,000 sheets
perforated down the gutter*

INTER-PANNEAU STRIP with perforated gutter left intact



From 1 of the 50 sheets left unsevered and left intact.

TOPLESS-4

NEW DISCOVERY CONSTANT PLATE VARIETY

Variety: the numeral "4" in "1534"
in UL corner of stamp has a decapitated top.

Normal stamp



mint stamp

TOPLESS-4 Mint Examples



multiple copies to show constancy



Exhibitor's New Discovery was submitted to and accepted by "THE UNITRADE SPECIALIZED CATALOGUE OF CANADIAN STAMPS" and will be included in their next edition as a Major Variety.

TOPLESS-4 Examples



Block print corner card on cover with variety.



CDS hammer: WHEATLEY ONT Oct. 8, 1934

Domestic letter rate 3¢

BURR on SHOULDER
CONSTANT PLATE VARIETY



Variety: Burr just behind Cartier's head,
above his shoulder and below his hat.
in UR stamp of block of four.



Variety examples



Printed corner card on commercial cover with variety.



CDS duplex hammer: CALABOGIE ONT AUG. 24, 19. Domestic letter rate 3¢

VARIETIES in BLOCKS of four
KNOWN VARIETIES

'T' WHITE DOTS in LR stamp



White dots around 'T' of 'CENTS',
as described in Hans Reiche's book

HAIRLINE from HAND in UL stamp



SCARFACE variety in LL corner of block adjoining Plate Block



DOMESTIC 3¢ COVERS

With historical CINDERELLA and REGISTRATION rate stamp.

LAVIOLETTE & CARTIER historical figures



LAVIOLETTE Cinderella by *Société St. Jean Baptiste*. He was the first commandant of Trois-Rivières, when it was established in 1634, and had the stockade built.

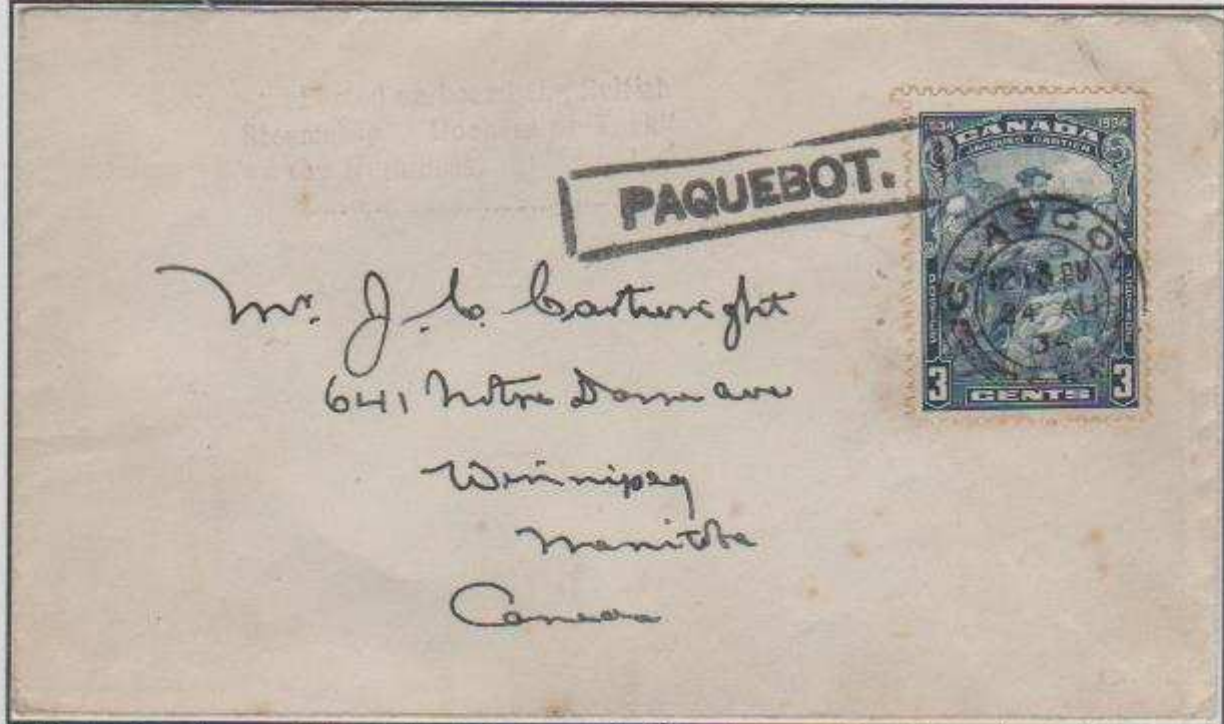
CARTIER & CARTIER historical figures



Sir George-Étienne CARTIER was co-premier of the Province of Canada, a Father and kingpin of Confederation (his 10c stamp for REGISTRATION)

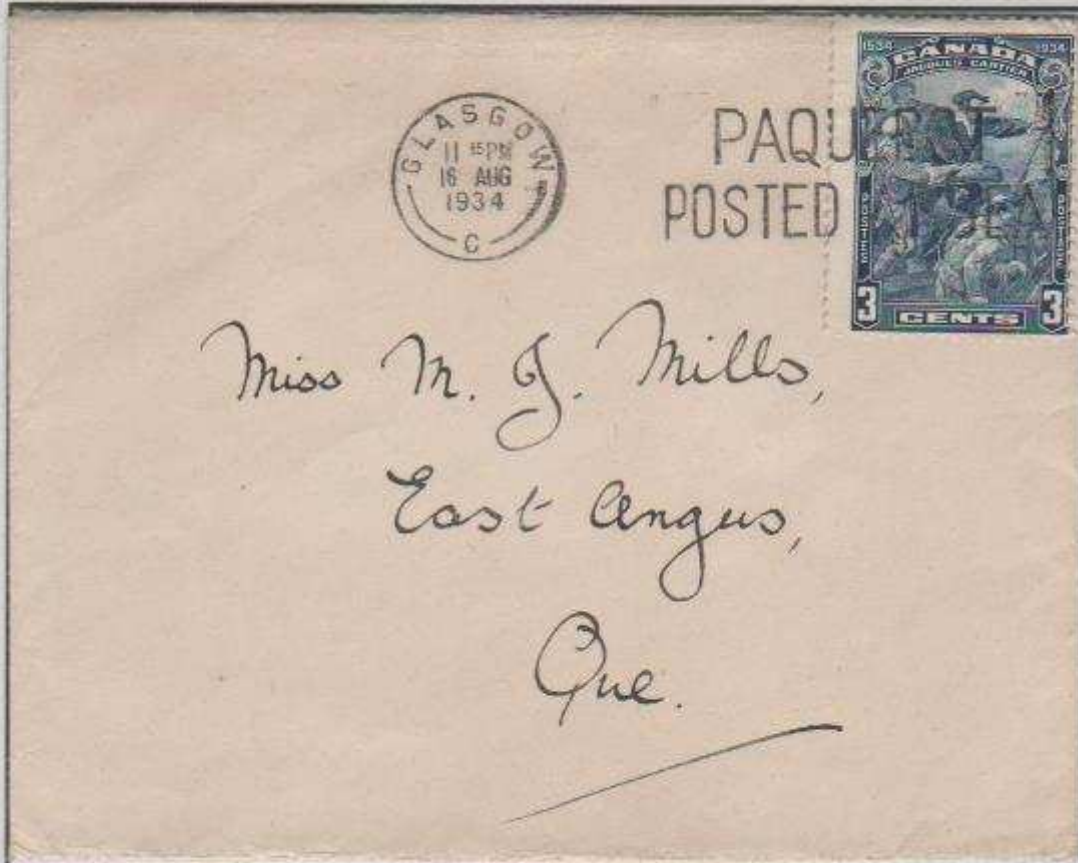
CANADIAN PAQUEBOTS
FIRST PORT of CALL: GLASGOW

PAQUEBOT GLASGOW DOUBLE CIRCLE PORT of CALL cancel



'Posted on board the British Steamship "Duchess of York" on the High Seas'.
(at top of envelope in now somewhat faded purple)

PAQUEBOT POSTED AT SEA GLASGOW CDS PORT of CALL cancel



On backflap
"CANADIAN PACIFIC"
(CP had the
sea mail contract
for the Pacific).

Backstamp:
East Angus P.Q.
AM AU 25 34

LOCAL & US REGISTERED RATES
with BLOCK on Centennial cover or Postal Stationery .

BLOCK on TORONTO CENTENNIAL REGISTERED LOCAL COVER



Local rate 2¢ + registration 10¢ = 12¢ block

BLOCK on 1¢ POSTAL STATIONERY US REGISTERED ENVELOPE



US postal rate 3¢ + registration 10¢ = 13¢ = 12¢ block + 1¢ Postal Envelope

DIFFERENT RATE MULTIPLES

AR REGISTERED and AIRMAIL

REGISTERED with ACKNOWLEDGEMENT RECEIPT (AR)



US rate 3¢ + Registration rate 10¢ + AR rate 5¢ = 18¢ using BLOCK & Plate PAIR

US AIRMAIL rate 8¢ + 1¢ WAR TAX (using TRIPLET but was rate confusion)



MAJOR RATE CONFUSION: US AIRMAIL rate was 8¢ but 1¢ WAR TAX, in effect for all domestic and US rates except US AIRMAIL, and was reduced to 6¢ on July 1, 1934.

CROSS-BORDER 3¢ RATE

ARCTIC and SHIP MAIL

Mailed from the Arctic station, BAFFIN ISLAND N.T.



The ship, R.M.S NASKOPIE, annually serviced the Eastern Canadian Arctic., picking up mail for its' one return trip south.

Mailed aboard the CPR ship, the S. S. PRINCESS ELIZABETH



Mailed JUL 28 1934, on the CPR, B.C. COAST SERVICE entering mail stream at the first Port of Call, VANCOUVER JUL 29 1934

INTERNATIONAL MAIL
and PREFERRED RATE EXCEPTION

To SHANGHAI, CHINA, INTERNATIONAL RATE 5¢



Backstamp: SHANGHAI

Slogan Cancel: "REGISTER ALL LETTERS OF VALUE"

PREFERRED SEA MAIL RATE TO FRANCE: 3¢



Backstamp: MARSEILLE ARRIVEE 23* 15 VII 1934.

SOUTH PACIFIC 3¢ EMPIRE RATE

PACKET BOAT or REGISTERED

Mailed aboard the N.Z. PACKET BOAT: R.M.M.S. AORANGI.



CPR had the Government Pacific Ocean mail contract and sub-contracted the South Pacific mail service to the Union Steamship Company, thus, qualifying the use of Canadian stamps on this N.Z MARINE POST OFFICE

REGISTERED to AUSTRALIA



Backstamps:

VANCOUVER
JUL 7 34

SYDNEY
6 AU 34

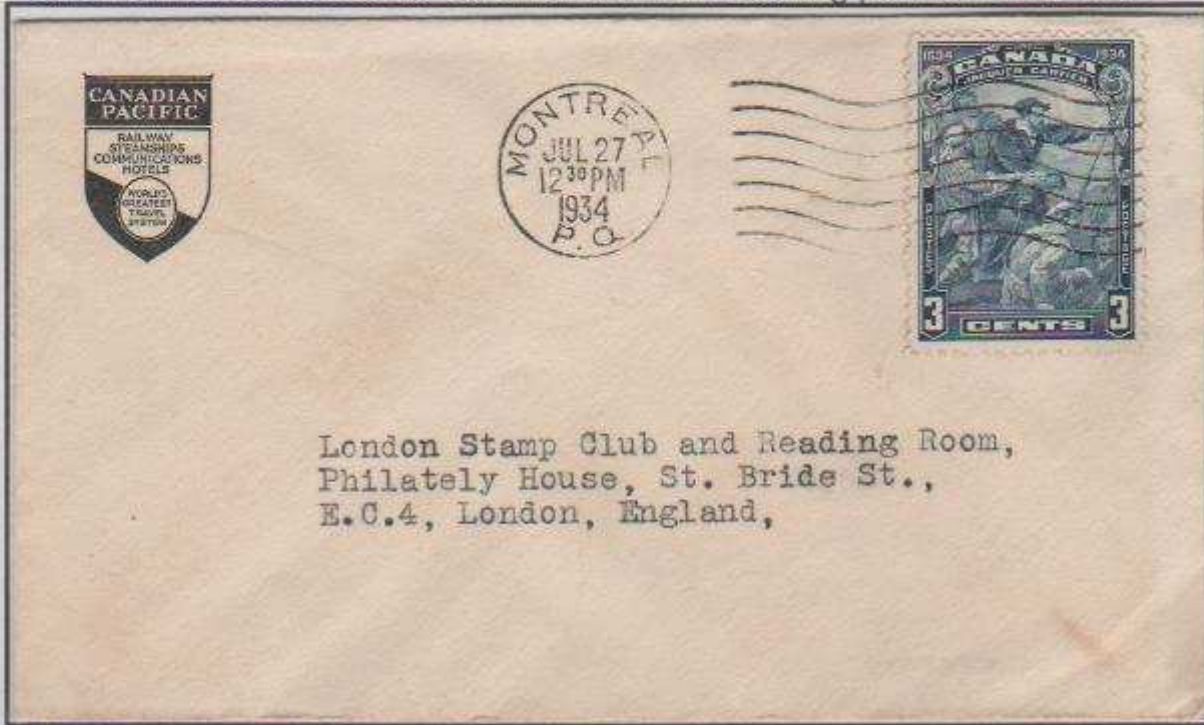
BRISBANE
7 AU 34

SOUTH
BRISBANE
8 AUG 34

10¢ Registration (number 18517) + 3¢ Empire rate to Australia

BRITISH EMPIRE SEA MAIL RATE
and with PAIR for AIRMAIL

CANADIAN PACIFIC corner card for RR mail to sailing port for ENGLAND



BRITISH EMPIRE SEA MAIL rate 3¢

Part by AIRMAIL to New York port to board S.S. Washington ship for ENGLAND



Domestic/US AIRMAIL surcharge 3¢ + BRITISH EMPIRE SEA MAIL rate 3¢