

Dogs of Newfoundland Newfoundland postal and revenue material 1887 - 1944

Introduction
Dogs have played a big part in the Newfoundland and Labrador life, from hauling wood and supplies, transporting mail in winter, to saving lives. The big Newfoundland dogs became prize winning show dogs but were essentially working dogs along with the sled dogs and Labrador Esquimaux dogs.

Material
Stamps, plate proofs, 1931 essay, post cards, covers, plus a rare tobacco excise stamp, and a large engraved essay in black used for the 1887 to 1898 half-cent issues.

■ indicates a rare item or one of particular interest

Contents

- Pages 1-4 - Newfoundland dog
- Pages 5-10 - Sled dogs
- Pages 11-12 - Labrador Esquimaux dogs
- Pages 13-15 - Newfoundland dog
- Page 16 - Newfoundland and Labrador working dogs

[Sources: The Postal History of Newfoundland, 1887-1930; Newfoundland Air Mail 1918-1930; Warner, The Newfoundland Specialized Stamp Catalogue, 1981; The Story of Newfoundland, Colborne/Pearson, Family archives, the internet, and general knowledge.]



Newfoundland dog with the author's father, 1911

Newfoundland Dog

1913 Tobacco Tax stamp, Type B
1/10 lb. cut tobacco surcharge, featuring the Newfoundland dog from the 1887 1/2¢ postal issue, perf 12 x 12



type B: the lower bar of F in FIFTY is equal to top bar; large serif.

FIFTY CIGARETTES reading down

The first postage stamp ever to feature a dog

Issued 1887-1898 using the same printing plates, this stamp came into use when newspaper rates dropped to 1/2¢; perf 12 x 12



very scarce engraved vignette of dog's head printed in black on wove paper; 59 x 51 mm; used for the 1887-1898 issued half-cent stamps

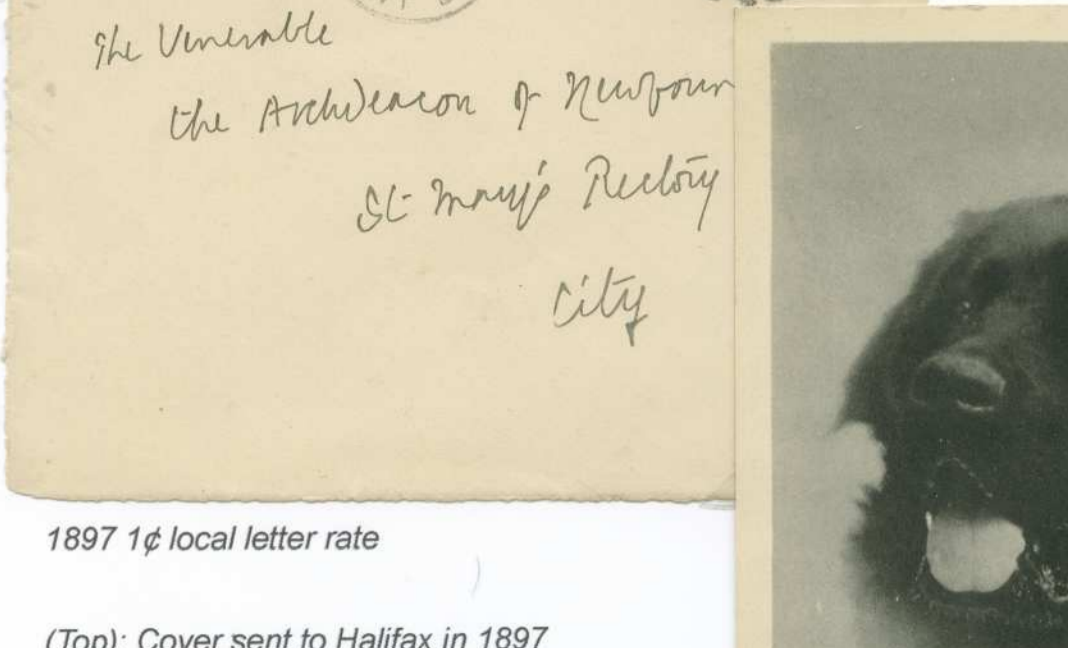


1887 orange red
rose red; bottom margin inscription
1898 pale orange red
deeper shade variation
gray black

Some suggest that the 1/2¢ dog was "Watch" from the Westerland kennels in St. John's owned by Henry Duder, grandfather of Lt. Col. Cluny Macpherson, Newfoundland physician and inventor of the gas mask



1897 local letter rate



(Top): Cover sent to Halifax in 1897

"Westerland Watch" a Newfoundland Dog - postcard, circa early 1900, published by Ayre and Sons Limited, St. John's, Newfoundland

Another theory is that the 1/2¢ Newfoundland Dog was engraved after Sir Edwin Landseer's 1831 painting "A Distinguished Member of the Humane Society"

The dog in Landseer's painting is "Bob", found in a shipwreck off the coast of England the dog found his way to the London waterfront where he saved people from drowning a total of twenty-three times over fourteen years. He was made a distinguished member of the Royal Humane Society, which granted him a medal and access to food - Wikipedia



Postcards, circa early 1900, showing Landseer's painting of a Newfoundland dog, possibly used as a model for the 1/2¢ dog issue

Sled dogs

In rural and remote areas dog team was usually the best method of travel in winter, sled dogs were used to transport everything from mail to medicine

Issued for internal air mail service, featuring a bi-plane and dog team, both used to deliver mail in winter



1931 no watermark
Coat of Arms watermark
no watermark
no watermark
scan @ 75% superimposed with author's drawing showing position of inverted watermark
inverted Coat of Arms watermark
front of se-tenant stamps; scan @ 75%

WINTER TRAVEL
Early 1900 postcard of sled dogs bringing patients to one of the Grenfell Association hospitals. - Raphael Tuck & Sons Ltd.



Within Newfoundland, the 1931 air mail letter rate was 15¢; an extra 15¢ was required to return the letter to point of origin



Sent on the Gipsy Moth First Flight ST. JOHN'S / ST. ANTHONY; an extra 50¢ (transatlantic fee) was required to forward the letter on to England

Gipsy Moth First Flight; ST. JOHN'S / ST. ANTHONY / ST. JOHN'S; cover is signed by the pilot



Gipsy Moth First Flight; ST. JOHN'S / WESTERN ARM / ST. JOHN'S



Gipsy Moth First Flight cover; ST. JOHN'S / HAMPDEN / ST. JOHN'S; due to mechanical failure it took several weeks to get the mail to Hampden



Old Colony Airways; ST. JOHN'S / BURIN / ST. JOHN'S



In winter, with the bays frozen and the land covered in snow, dog teams allowed communication between outposts and islands that would otherwise be isolated until spring

L & S Post
A new, higher charge to register external letters drove the cost of sending a registered letter outside Newfoundland to 15¢ (10¢ registration fee + 5¢ letter rate); to supplement the supply of 15¢ stamps, 70,000 of the 1931 airmails were overprinted to render them surface postage. Black lines obliterated the words Air Mail; L & S stands for Land and Sea; Coat of Arms watermark

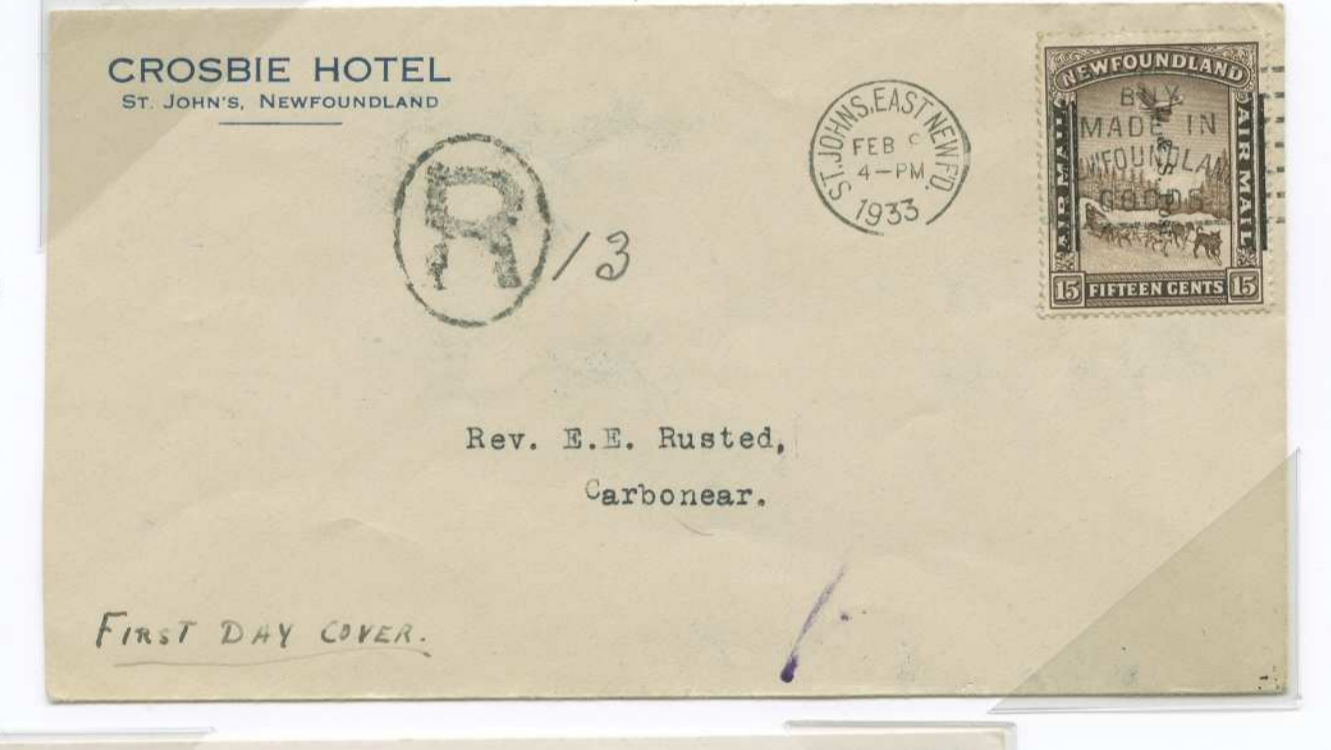


1933 L & S Post block of four; inverted watermarks on both left hand stamps; no watermarks at right



scan @ 85% superimposed with author's drawing of positions of inverted watermarks
scan @ 75% showing front of stamp block

Registered First Day Cover

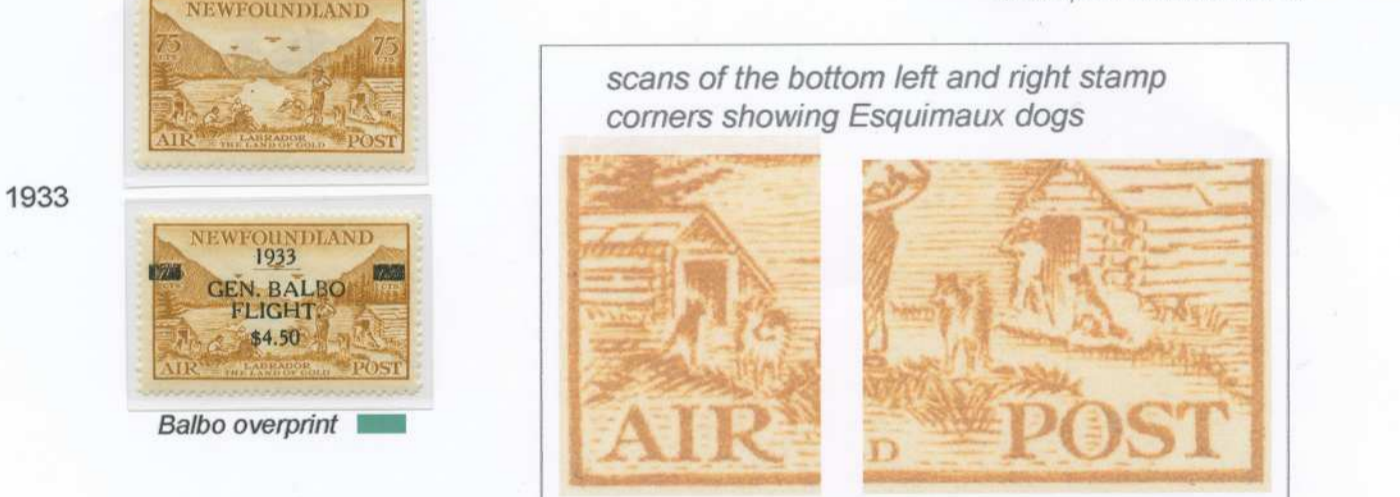


Labrador sled dogs - early 1900 postcard; sold for benefit of the Grenfell Mission

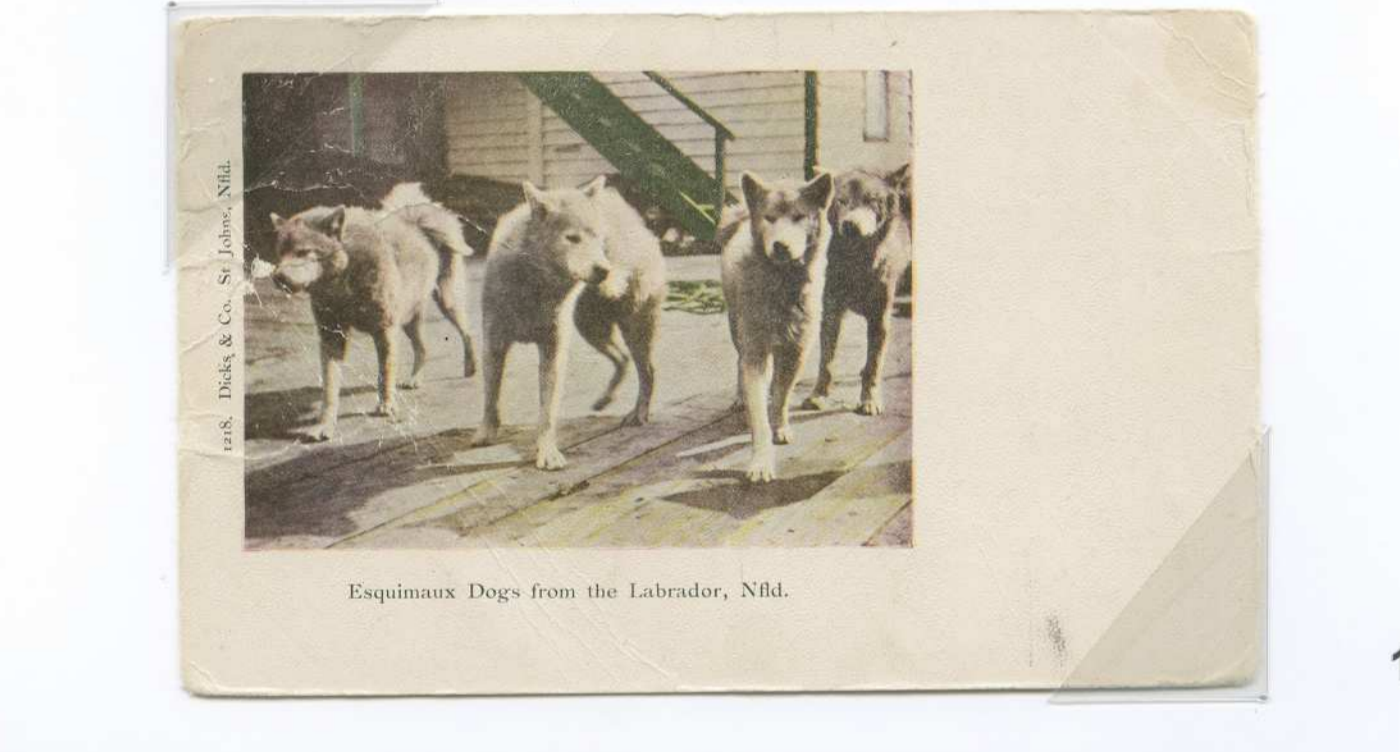
Labrador Esquimaux dogs (sled dogs)

The Canadian Eskimo Dog is one of the rarest remaining purebred indigenous domestic canine species in North America. It is known to have been resident in the Arctic for at least 4,000 years.

Labrador Air Mail, Newfoundland's last provisional air stamps; showing alluvial gold miners with Esquimaux dogs; 8,000 were overprinted for mail sent via the Balbo 'flying boats' that left Shovel Harbour on the last leg of a return flight between New York, Portugal and Italy; Coat of Arms watermark; perf 14.3



scans of the bottom left and right stamp corners showing Esquimaux dogs



Hand tinted post card, circa 1905; Dicks & Co. St. John's, Nfld. Esquimaux Dogs from the Labrador, Nfld.

Built for hard work, these powerful and athletic Arctic dogs are also called Qimmiq (Inuit for "dog").

Labrador Esquimaux dogs feasting on fish offal at a fish splitting table - Postcard by Photo Gelatine Engraving Co. (PECO)



Dog team, preparing to cross the frozen harbour ice, Labrador - Early 1900s postcard; sold for the benefit of the Grenfell Mission



Dog team

Newfoundland Dog

Champion Westerland Sieger; this fine Newfoundland Dog, raised in the Westerland kennels at St. John's, was owned by Hon. Harold Macpherson, a noted dog breeder who was one of the world's best authorities on the Newfoundland breed and credited with saving it from extinction



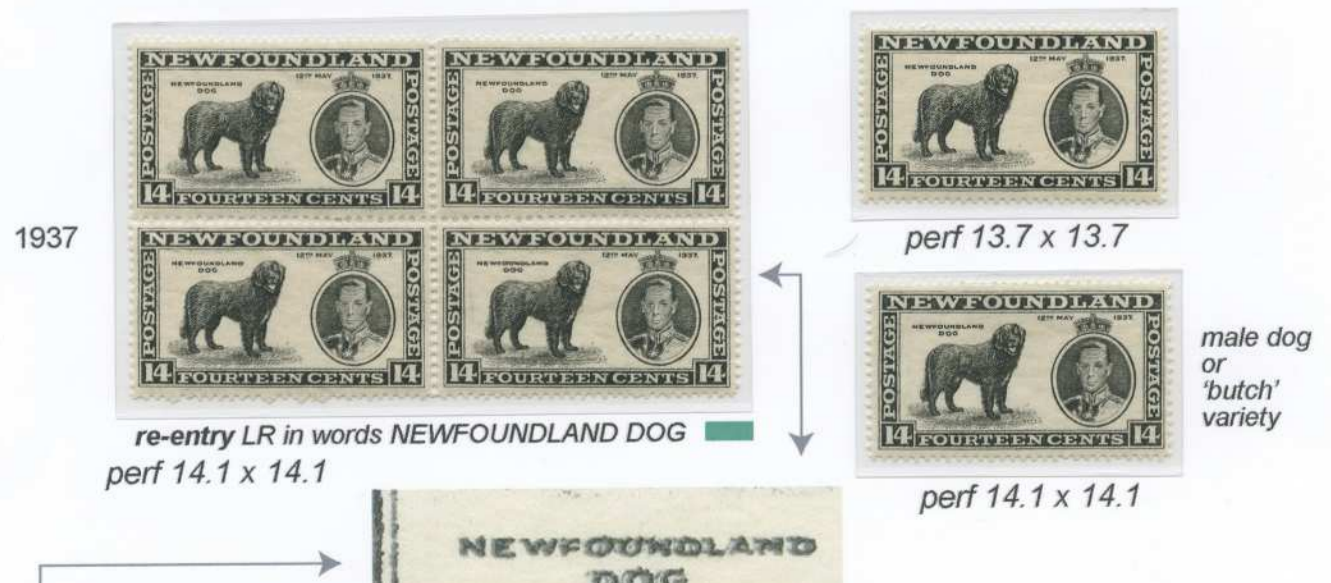
1932 plate proof on india paper



Champion Westerland Sirius, also raised in the kennels at Westerland - Early postcard printed by the Photopolatine Engraving Co., Ltd., Toronto

Newfoundland dogs have evolved over a long period of time to become the show dogs we see today. They have webbed feet and are fine swimmers with a natural instinct to rescue; their ancestry is somewhat obscure but there is archaeological evidence of the dog going back as far as the Vikings

Part of a special issue by the Newfoundland government for the coronation of King George VI; the design is similar to the 1932 14¢ issue but with the king's portrait added; Coat of Arms watermark



1937 re-entry LR in words NEWFOUNDLAND DOG
perf 14.1 x 14.1
re-entry detail
male dog variety



Registered cover to Canada paying the 5¢ postage + 10¢ registration; the 14¢ Long Coronation value has a re-entry in NEWFOUNDLAND DOG

Westerland Sieger's pedigree states 'Westerland Sheila' as the mother, and the sire was named Billy

From the Second Resources Issue, a new printing from dies of the 1932 issue, re-touched and re-worked. The original plates were damaged by WWII enemy action in London; Coat of Arms watermark



1944 Type 3 plate UR
perf 12.8 x 12.8
imperf

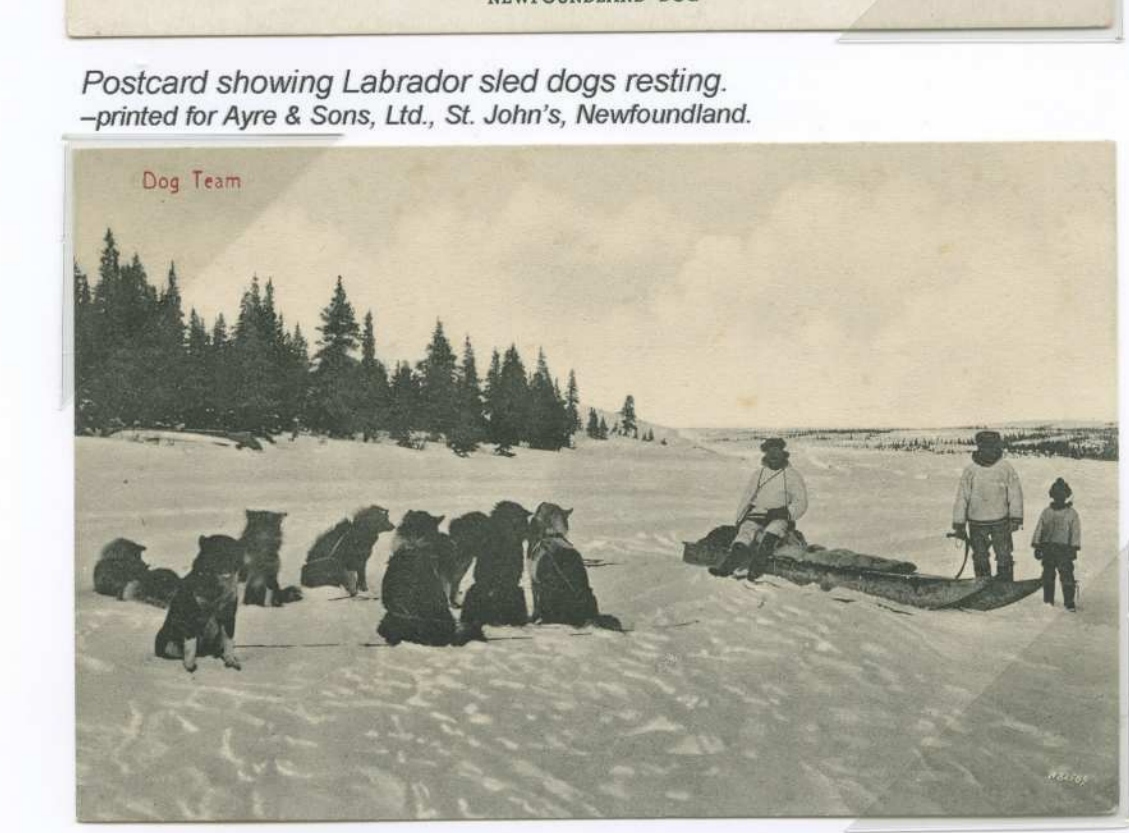


Cover sent from Gander to St. John's via Pan American's 1946 First Flight to Europe; postal fees include 4¢ Newfoundland inland rate + 36¢ return rate charged by the airlines, though this could vary

Newfoundland and Labrador working dogs

Newfoundland dogs were multipurpose dogs: water and rescue dog, fishing aid, draft animal and show dog; Labrador Esquimaux, huskies and sled dogs were hard-working, and especially necessary in the winter months

After hard work and putting on a great showing the dogs take time out for a well-deserved rest



Postcard showing Labrador sled dogs resting - printed by Ayre & Sons, Ltd., St. John's, Newfoundland

Dogs of Newfoundland

Newfoundland postal and revenue material 1887 - 1944

Introduction

Dogs have played a big part in the Newfoundland and Labrador life, from hauling wood and supplies, transporting mail in winter, to saving lives. The big Newfoundland dogs became prize winning show dogs but were essentially working dogs along with the sled dogs and Labrador Esquimaux dogs.

Material

Stamps, plate proofs, 1931 essay, post cards, covers, plus a rare tobacco excise stamp, and a large engraved essay in black used for the 1887 to 1898 half cent issues.



Newfoundland dog with the author's father, 1911

■ – indicates a rare item or one of particular interest

Contents

- Pages 1-4 – Newfoundland dog
- Pages 5-10 – Sled dogs
- Pages 11-12 – Labrador Esquimaux dogs
- Pages 13-15 – Newfoundland dog
Westerland Sieger
- Page 16 – Newfoundland and
Labrador working dogs

[Sources-The postal History of Newfoundland, Boggs; Newfoundland Air Mails 1919-1939, Harmer; The Newfoundland Specialized Stamp Catalogue, Walsh; The Story of Newfoundland, Cochrane/Parsons; Family archives, the internet, and general knowledge.]

Newfoundland Dog

1913 Tobacco Tax stamp, Type B

1/10 lb. cut tobacco surcharge; featuring the Newfoundland dog from the 1887 ½¢ postal issue; perf 12 x 12



type B: the Lower bar of F in FIFTY is equal to top bar; large serifs.

FIFTY CIGARETTES
reading down ■

The first postage stamp ever to feature a dog

Issued 1887-1898 using the same printing plates, this stamp came into use when newspaper rates dropped to 1/2¢; perf 12 x 12



very scarce engraved vignette of dog's head printed in black on wove paper; 59 x 51 mm; used for the 1887-1898 issued half-cent stamps

1887



rose red; bottom margin inscription

1896



orange red



pale orange red



deeper shade variation

1894



black; top margin inscription

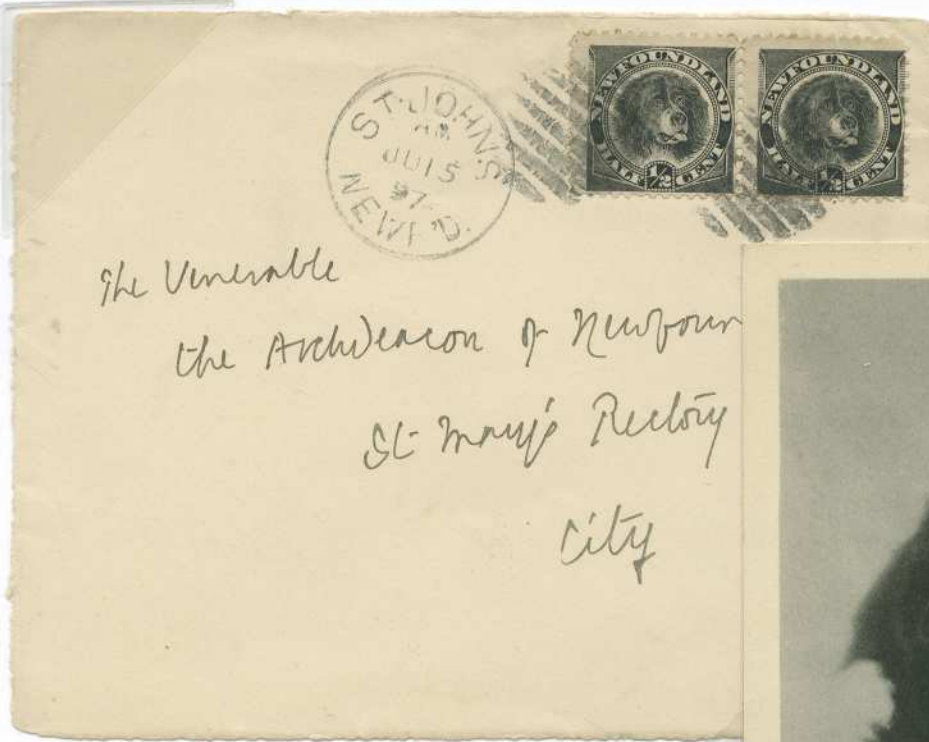
1898



gray black

Some suggest that the 1/2¢ dog was "Watch" from the Westerland kennels in

St. John's owned by Henry Duder, grandfather of Lt. Col. Cluny Macpherson, Newfoundland physician and inventor of the gas mask



1897 1¢ local letter rate

(Top): Cover sent to Halifax in 1897

"Westerland Watch"
a Newfoundland Dog

—postcard, circa early 1900, published
by Ayre and Sons Limited, St. John's,
Newfoundland



4123 "Westerland Watch," a Newfoundland Dog. Copyright.

Another theory is that the 1/2¢ Newfoundland Dog was engraved after Sir Edwin Landseer's 1831 painting "A Distinguished Member of the Humane Society"

The dog in Landseer's painting is "Bob"; found in a shipwreck off the coast of England the dog found his way to the London waterfront where he saved people from drowning a total of twenty-three times over fourteen years. He was made a distinguished member of the Royal Humane Society, which granted him a medal and access to food -Wikipedia



Postcards, circa early 1900, showing Landseer's painting of a Newfoundland dog, possibly used as a model for the 1/2¢ dog issue

Sled dogs

In rural and remote areas dog team was usually the best method of travel in winter; sled dogs were used to transport everything from mail to medicine

Issued for internal air mail service; featuring a bi-plane and dog team, both used to deliver mail in winter



scarce colour trial large die proof; purple-brown on yellowed paper

1931



no watermark
perf 14.1 x 14.1

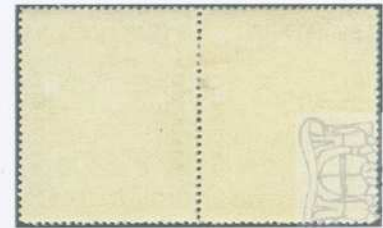


Coat of Arms watermark
perf 14.3 x 14.1



se-tenant; perf 14.3 x 14.1
no watermark

inverted
Coat of Arms
watermark



scan @ 75% superimposed with author's drawing showing position of inverted watermark



front of se-tenant stamps; scan @ 75%

normal water mark



WINTER TRAVEL

Early 1900 postcard of sled dogs bringing patients to one of the Grenfell Association hospitals. —Raphael Tuck & Sons Ltd.



Within Newfoundland, the 1931 air mail letter rate was 15¢; an extra 15¢ was required to return the letter to point of origin

1931



Gipsy Moth First Flight; ST. JOHN'S / CONCHE

Gipsy Moth First Flight and return; ST. JOHN'S / ST. ANTHONY / ST. JOHN'S



Sent on the Gipsy Moth First Flight ST. JOHN'S / ST. ANTHONY; an extra 50¢ (transatlantic fee) was required to forward the letter on to England

Gipsy Moth First Flight; ST. JOHN'S / ST. ANTHONY / ST. JOHN'S;
cover is signed by the pilot

1931



Gipsy Moth First Flight; ST. JOHN'S / WESTERN ARM / ST. JOHN'S



Gipsy Moth First Flight cover; ST. JOHN'S / HAMPDEN / ST. JOHN'S;
due to mechanical failure it took several weeks to get the mail to Hampden

1931



Old Colony Airways; ST. JOHN'S / BURIN / ST. JOHN'S



In winter, with the bays frozen and the land covered in snow, dog teams allowed communication between outposts and islands that would otherwise be isolated until spring

L & S Post

A new, higher charge to register external letters drove the cost of sending a registered letter outside Newfoundland to 15¢ (10¢ registration fee + 5¢ letter rate); to supplement the supply of 15¢ stamps, 70,000 of the 1931 airmails were overprinted to render them surface postage

Black lines obliterated the words Air Mail; L & S stands for Land and Sea; Coat of Arms watermark

1933



perf 13.8 x 13.8



perf 14.1 x 14.1



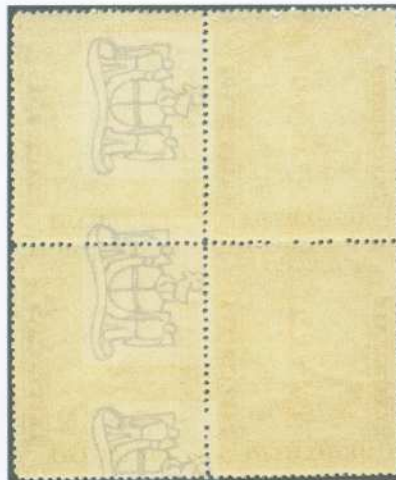
shifted overprint
perf 14.1 x 14.1

L & S Post block of four:

inverted watermarks on both left hand stamps; no watermarks at right



perf 13.8 x 13.8



scan @ 85% superimposed with author's drawing of positions of inverted watermarks



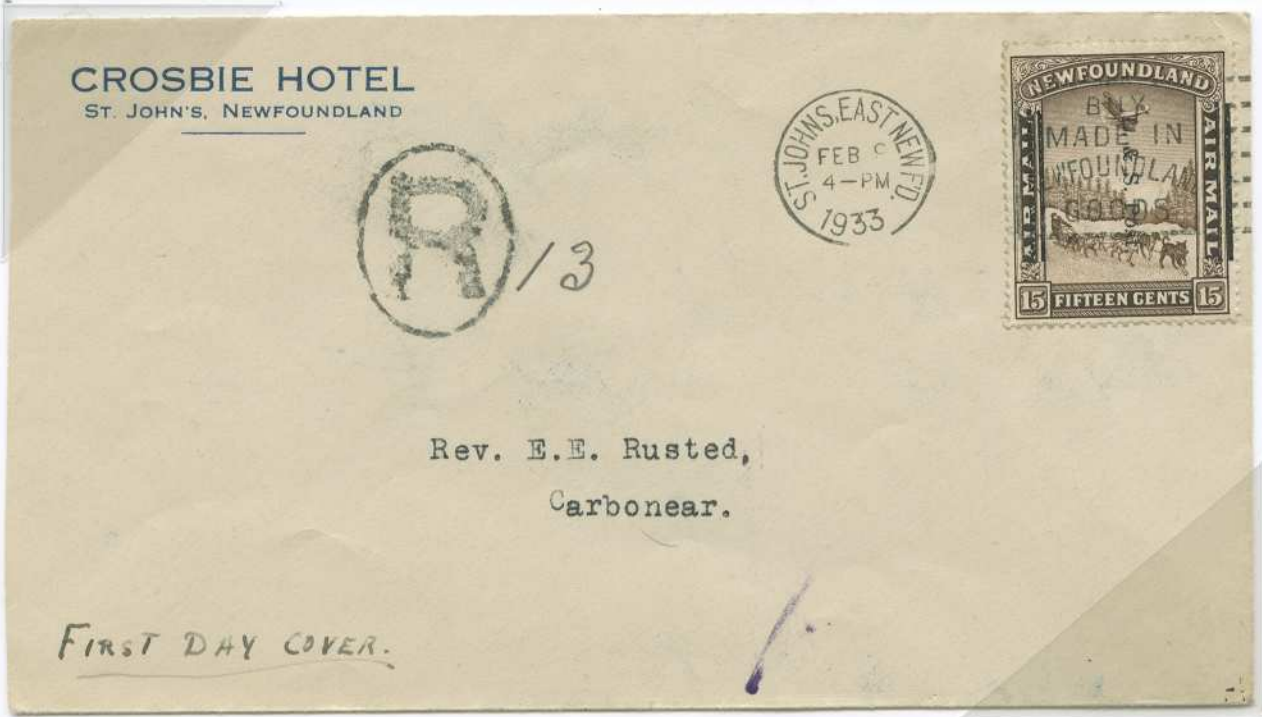
scan @ 75% showing front of stamp block



normal watermark

Registered First Day Cover

1933



LABRADOR HUSKIES

Labrador sled dogs:—early 1900 postcards; sold for benefit of the Grenfell Mission



Labrador Esquimaux dogs (sled dogs)

The Canadian Eskimo Dog is one of the rarest remaining purebred indigenous domestic canine species in North America. It is known to have been resident in the Arctic for at least 4,000 years.

Labrador Air Mail, Newfoundland's last provisional air stamps; showing alluvial gold miners with **Esquimaux dogs**; 8,000 were overprinted for mail sent via the Balbo 'flying boats' that left Shoal Harbour on the last leg of a return flight between New York, Portugal and Italy; Coat of Arms watermark; perf 14.3



"Esquimaux dogs" from *The Quadrupeds of North America*



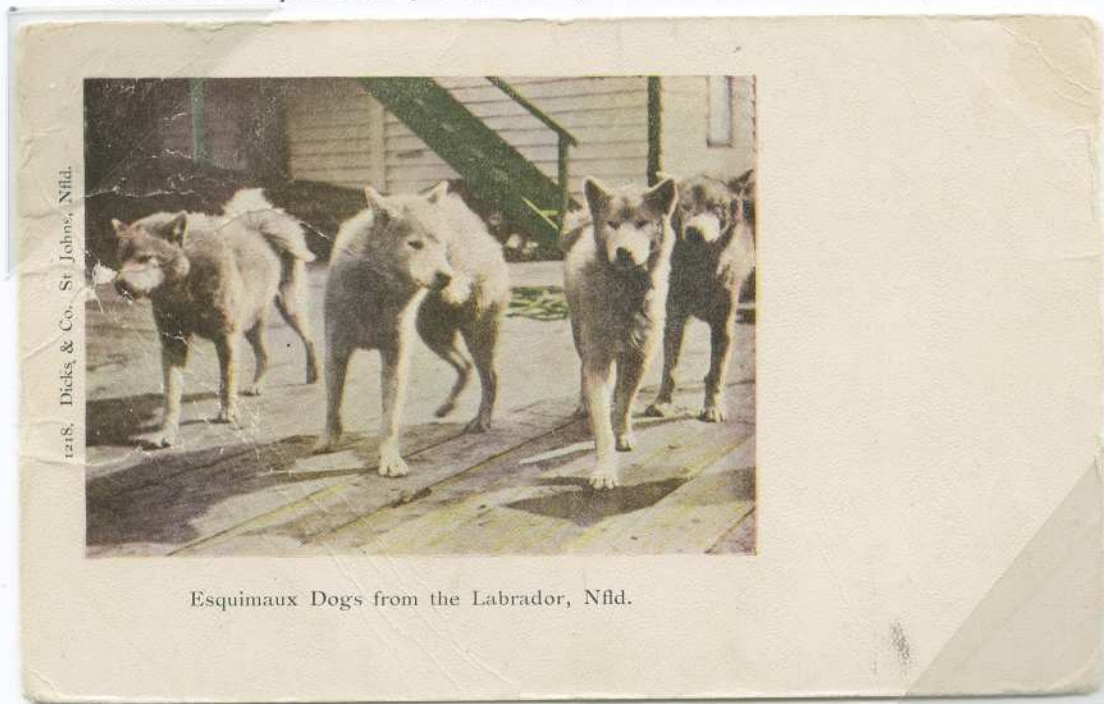
Balbo overprint

1933

scans of the bottom left and right stamp corners showing Esquimaux dogs



Hand tinted post card, circa 1905; Dicks & Co. St. John's, Nfld.



1218. Dicks & Co. St. John's, Nfld.

Esquimaux Dogs from the Labrador, Nfld.

Built for hard work, these powerful and athletic Arctic dogs are also called Qimmiq (Inuit for "dog").

*Labrador Esquimaux dogs feasting on fish offal at a fish splitting table
-Postcard by Photo Gelatine Engraving Co. (PECO)*



*Dog team; preparing to cross the frozen harbour ice, Labrador
-Early 1900s postcard, sold for the benefit of the Grenfell Mission*



Newfoundland Dog

Champion Westerland Sieger; this fine Newfoundland Dog, raised in the Westerland kennels at St. John's, was owned by Hon. Harold MacPherson, a noted dog breeder who was one of the world's best authorities on the Newfoundland breed and credited with saving it from extinction

From the First Resources Issue; Coat of Arms watermark

1932



plate proof
on india paper



perf 13.5 x 13.5

Registered letter to the USA; 5¢ basic letter rate + 10¢ registration fee



Westerland Sirius.

Champion Westerland
Sirius, also raised in
the kennels at
Westerland

—Early postcard printed by
the Photogelatine
Engraving Co., Ltd.,
Toronto

Newfoundland dogs have evolved over a long period of time to become the show dogs we see today. They have webbed feet and are fine swimmers with a natural instinct to rescue; their ancestry is somewhat obscure but there is archaeological evidence of the dog going back as far as the Vikings

Part of a special issue by the Newfoundland government for the coronation of King George VI; the design is similar to the 1932 14¢ issue but with the king's portrait added; Coat of Arms watermark



Registered cover to Canada paying the 5¢ postage + 10¢ registration; the 14¢ Long Coronation value has a **re-entry** in NEWFOUNDLAND DOG



Westerland Sieger's pedigree states 'Westerland Sheila' as the mother, and the sire was named Billy

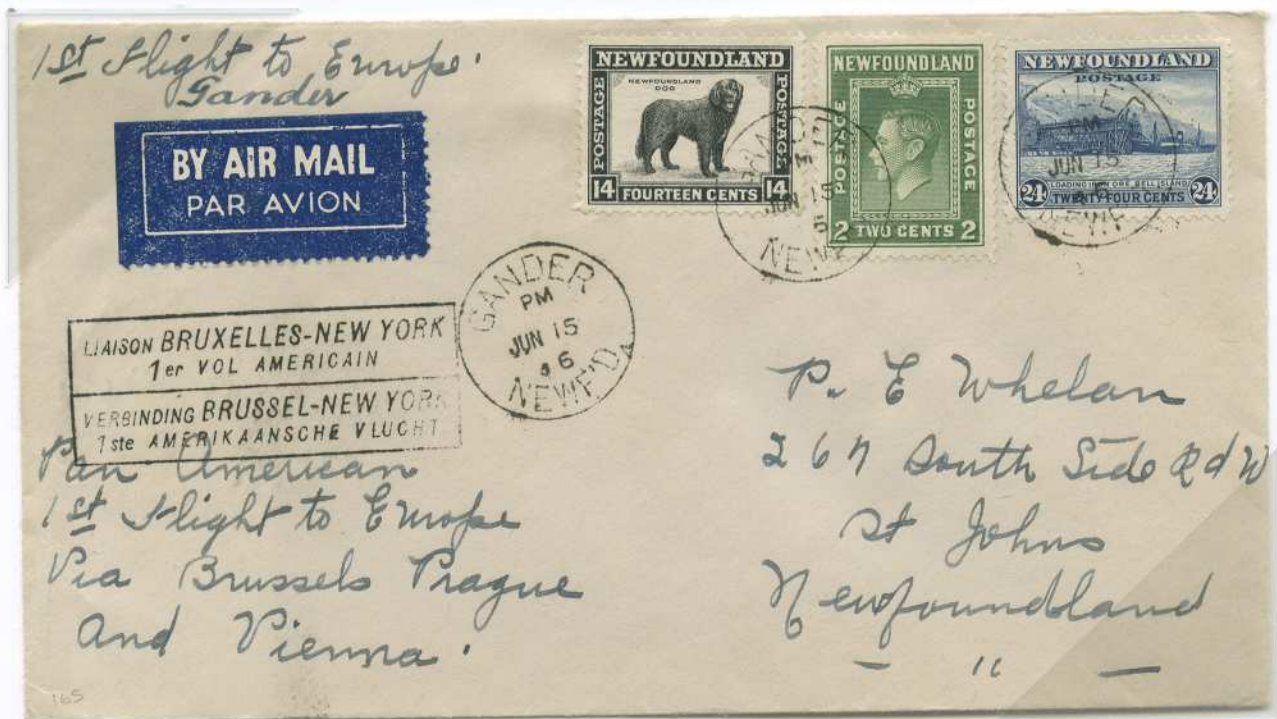
From the Second Resources Issue; a new printing from dies of the 1932 issue, re-touched and re-worked. The original plates were damaged by WWII enemy action in London; Coat of Arms watermark

All four perforation sizes shown

1944



Cover sent from Gander to St. John's via Pan American's 1946 First Flight to Europe; postal fees include 4¢ Newfoundland inland rate + 36¢ return rate charged by the airlines, though this could vary

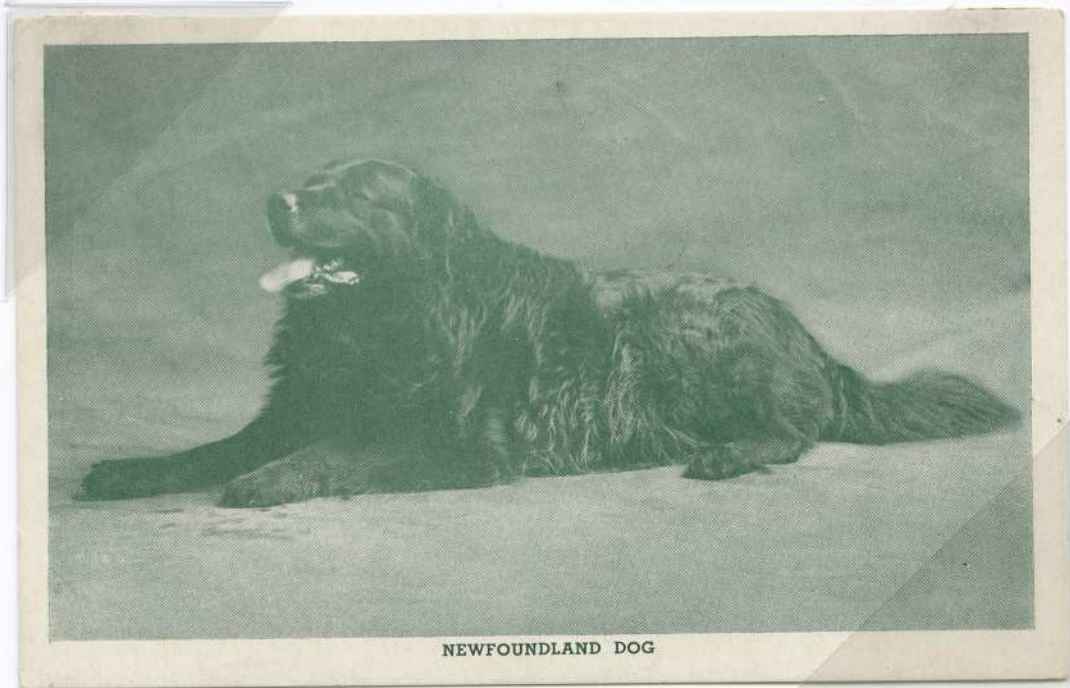


Newfoundland and Labrador working dogs

Newfoundland dogs were multipurpose dogs: water and rescue dog, fishing aid, draft animal and show dog; Labrador Esquimaux, huskies and sled dogs were hard-working, and especially necessary in the winter months

After hard work and putting on a great showing the dogs take time out for a well-deserved rest

Newfoundland dog –postcard by J.C. Parsons, Corner Brook, N.F.L.D.



*Postcard showing Labrador sled dogs resting.
–printed for Ayre & Sons, Ltd., St. John's, Newfoundland.*

