

# PAPUAN LAKATOI PUNCTURED OS STAMP ERRORS

OHMS mail service to Papuan destinations was free of postage. However, OHMS mail to overseas destinations required postage stamps to be affixed at the going rate.

Stamps punctured OS were initially prepared at the Government Printing Office in Port Moresby for the purpose of distinguishing, Government official service mail, and distributed to Government Departments.

A single die machine was used perforating two or three rows down, 5 stamps across up to six sheets at a time. The sheets were then repositioned to puncture the lower two or three rows. Another method could be possible that the sheet was folded in two rows horizontally to produce three layers.

There is still a debate as to how the perforation of the OS was actually done.

At Port Moresby the operation was done by the local indigenous staff as a labour-intensive task, including supervision, it was questionable that the concept of puncturing stamps with OS was fully understood. From their point of view, so long as the stamps was perforated OS the job was done. This led to numerous errors, and seemingly unimaginable varieties of alignment and multiple perforations. The sheet of 30 were nearly square in shape which would support the idea that sheets when layered for perforation could have be inserted upside down, sideways, rotated 90 degrees, or even gummed side up. The difference in technology and operation in Melbourne led to fewer varieties of type and quantity amongst the Printed One colour and Printed two colours OS issues.

## The stamps perforated OS are all in their respective years.

- 1907 British New Guinea small Papua overprint, Watermark rosette.
  - 1910 Small Papua Watermarks both upright and sideways, perforation 11 and 12.5.
  - January 1910 Large Papua Watermark sideways P 11, watermark upright 1/2d, peroration 11.
  - 1910 – 1911 Large Papua, Watermark upright perforation 12.5
  - 1911 Sheet Large Papua Large Papua 2/6 Watermark vertical, perforation 12.5.
  - 1911 Printed One colour, Watermark sideways, perforation 12.5.
  - 1916 Printed Two Colours, Watermark sideways, perforation 14.
- All issues are represented in the exhibit, indicating the problems were never addressed.

## The following errors are shown in the exhibit.

- Doubling perforations and misalignment of the impression.
- Pairs of stamps, one perforated and the other with no perforation.
- The OS on the stamp being SO also double.
- OS on a diagonal and multipoles OS on a stamp.
- Vertical OS reading upwards.

Theft of OS stamps (including errors) from the Government Departments was rife, and finally addressed when all OS stamps had to be pre-cancelled prior to issue to the department.

All stamps exhibited have an Expert's Certificate of Authenticity, all are stated to be RARE.

1907 Small Papua overprint on  
British New Guinea Lakatoi  
(Printed by J. Wood Government printing Port Moresby)  
Perforation 14



2/6 black and brown, watermark rosette horizontal,  
horizontal pair perf OS on the left stamp cancelled,  
doing two lines at a time, 5 stamps across, lack of attention.  
The first officially issued OS perforated stamp was the 2/6  
Small Papua overprint. It is found on thick paper both  
watermarks vertical and horizontal, and the thin paper  
vertical watermark.  
Croaker's earliest recorded version is 5 Dec 09.

## December 1910 Lakatoi Small Papua Perforation 12.5

(Printed by J.B.Cooke)



1/2d black and green, block of 6, watermark horizontal, perf OS diagonal.  
Lack of attention in positioning of sheet.

## 1909 Small Papua Perforation 11



1/2d black and green, block of 4, watermark horizontal, perf OS on UR, inverted on LL, and both inverted and diagonal.  
Sheet placed upside down, and alignment of sheet, lack of attention.



1/2d black and green, block of 4, watermark horizontal, perf OS diagonal on lower two. Lack of attention in alignment of sheet.

## 1910 Lakatoi Small Papua Perforation 11

(Printed by J.B.Cooke)



1d black and carmine, horizontal pair, watermark horizontal, only right stamp is perf OS.  
By doing 2 rows at a time, workmanship, lack of attention.

December 1909



1/2d black and green, vertical pair, watermark horizontal, perf OS diagonal on lower stamp.  
Lack of attention in alignment of sheet, workmanship, lack of attention.

# January 1910 Lakatoi Small Papua Perforation 12.5

(Printed by J.B.Cooke)



2d black and purple, block of 4, watermark horizontal, perf OS diagonal on UL, and Inverted. Error workmanship, lack of attention.



2d black and purple, vertical pair, watermark horizontal, only upper stamp is perf OS. By perforating 2 rows at a time workmanship, lack of attention.



2d black and purple, watermark horizontal, perf OS sideways reading upwards, lack of attention in placement of sheet.



2d black and purple, watermark horizontal, triple OS, with two reading sideways. Error workmanship, lack of attention.

# 1908 Lakatoi Small Papua Perforation 12.5

(Printed by J.B.Cooke)



2 1/2 black and pale ultramarine, watermark crown over a vertical, block of nine, centre stamp perf OS double, Perforating sheet twice, workmanship, lack of attention



2 1/2d black and pale ultramarine, watermark Vertical, horizontal pair, perf OS right stamp double. Perforating sheet twice, workmanship, lack of attention.



2 1/2d black and pale ultramarine, watermark vertical, perf OS inverted. Sheet being place upside down.



2 1/2d, back and pale ultramarine, watermark vertical, inverted, vertical pair, only upper stamp is perf OS. Error workmanship, lack of attention.

## 1910 Lakatoi Small Papua Perforation 12.5

(Printed by J.B.Cooke)



1d back and carmine, block of 6.  
watermark horizontal, only upper two  
and lower two stamps are perf OS,  
while two stamps or normal.  
Lack of attention in sheet placement.



1911- 12

1d back and carmine, block of 4,  
watermark horizontal, perf OS inverted  
on all, and partly diagonal on UL.  
Placing sheet upside down.

## 1910 Lakatoi Small Papua Perforation 12.5

(Printed by J.B.Cooke)



1s black and orange, block of 4, watermark horizontal, perf OS diagonal on UL and diagonal downwards on LR, and Inverted on LL. Lack of attention in alignment of sheet.



1s black and orange, watermark horizontal, perf OS Reversed. Placing sheet upside down.

## January 1910 Large Papua Perforation 12.5

(Printed by J.B.Cooke)



4d black and sepia, vertical pair,  
watermark vertical, perf OS on lower  
stamp.

Workmanship, or lack of attention, in  
sheet alignment.



4d black and sepia, watermark  
crown over A vertical, perf OS  
sideways and reversed.  
Rotating sheet by 90 degree.



4d black and sepia, watermark  
crown over A vertical, perf OS  
Inverted.  
By placing sheet upside down.

## 1910 Lakatoi Small Papua Perforation 12.5

(Printed by J.B.Cooke)



1/- black and orange, watermark horizontal, block of 4,  
perf OS inverted.  
Sheet placed upside down.



1/- black and orange, watermark horizontal, vertical pair, only upper  
stamp is perf OS.  
Lack of attention in sheet placement.

## 1910 Lakatoi Large Papua Perforation 12.5

(Printed by J.B.Cooke)



2/6 black and brown, type B, watermark vertical, vertical pair OS Double on upper stamp and Inverted. Placing a sheet on top of already Perf OS sheet, and sheet being upside down.



2/6 Black and brown, type B, watermark vertical, horizontal pair, perf OS, right stamp Inverted.  
By workmanship, or lack of attention



2 1/2d black and blue- violet, watermark vertical, perf OS Inverted.  
By placing sheet upside down.



6d black and myrtle-green, watermark vertical, perf OS Double.  
Placing a sheet on top of already perf OS sheet.

## 1911 Lakatoi Large Papua Perforation 11

(Printed by J.B.Cooke)



2/6 back and chocolate, watermark horizontal, perf OS sideways reading upwards.  
Caused by rotating sheet by 90 degree.



2/6 black and chocolate, watermark horizontal, perf OS double.  
Placing a sheet on top of an already perf OS sheet.



2/6 black and chocolate, perf 11, watermark horizontal, perf OS inverted.  
Placing a sheet upside down.

### 1910 Lakatoi Large Papua



1/2d black and yellow-green, watermark vertical, perf OS double.  
Placing a sheet on top of already perf OS sheet.

# 1911 Sheet Large Papua Perforation 12.5

(Printed by J.B.Cooke)



2/6 black-brown, type B, watermark vertical, full sheet of 30, perf OS, lower 3 rows all OS Inverted. Placing sheet upside down.

## 1911 -12 Lakatoi Monocolour Perforation 12.5

(Printed by J.B.Cooke)



1/2d yellow-green, watermark crown over A sideways, perf OS double.

Placing a sheet on top of already perf OS sheet



1d rose-pink, watermark crown over A sideways, per OS double.  
Placing a sheet on top of already perf OS sheet.



2 1/2d bright ultramarine, vertical pair, watermark sideways, perf OS only upper stamp.

Doing two lines at a time, 5 stamps across, workmanship, or lack of attention.



2 1/2d bright ultramarine, watermark sideways, perf OS diagonal.  
Bad alignment of sheet, workmanship, or lack of attention.

## 1911 Lakatoi One colour Perforation 12.5

(Printed by J.B.Cooke)



6d orange-brown, vertical pair, watermark sideways, perf OS on upper stamp.  
By perforating two rows at a time 5 across, workmanship, or lack of attention.



6d orange-brown, vertical pair. watermark sideways, perf OS on upper stamp.  
By perforating two rows at a time 5stamps across, workmanship, or lack of attention.

## 1927 Two colours Perforation 14

(Printed by John Ash)



1/- yellow, horizontal pair, watermark sideways, perf OS only on right stamp.  
By perforating two rows at a time, 5 stamps across, workmanship, or lack of attention.



6d dull -purple and red, watermark sideways, perf OS right stamp double only.  
By placing a sheet on top of already perf OS sheet.

## 1916 Lakatoi Printed two colours Perforation 14

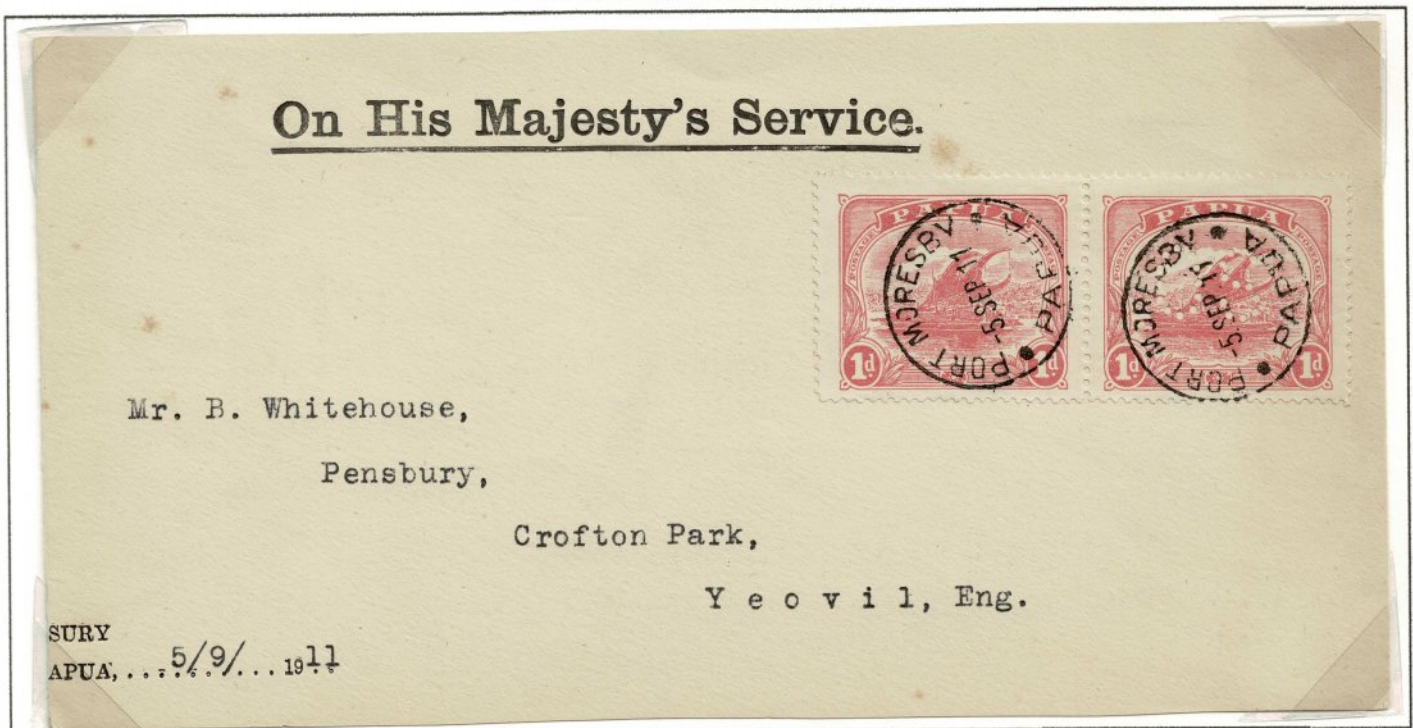
(Printed by T.S. Harrison)



Lower margin block of 10, T S Harrison imprint, perf OS, watermark sideways perf 14, perf OS 2<sup>nd</sup> block of 4 re-joined into block inverted, perf OS inverted. The item represents official "repair" of a sheet by the printer replacing imperforated stamps (see margin for shifted perf) but those replacement stamps were accidentally added inverted.

## 1911-12 One colour Perforation 12.5

(Printed by J.B. Cooke)



Covers On His Majesty's Service in Papua were not required to be stamped. Only on overseas mail were stamps required. Letter posted 2d overseas to England on the 5/9/1909. Horizontal pair with right stamp perf OS only. Due to misalignment on the sheet, workmanship, lack of attention.