

Soliloquy of a Postage Stamp

(By Ernest W. Brady)

This poem has inspired me to exhibit stamps in such a way to encourage people to look at stamps from a different point of view. To see stamps and to see a story with those stamps, to think more about the stamp, to think how can I collect them in line with what I see in the stamp. This poem is talking about a stamp and what the stamp is showing to the world.

Every time I read the poem I saw something different which made me rethink my collection and to change my stamps to suit my new vision.

Paragraph one: Takes the life of a stamp and how it is transported around the world.

Paragraph two: Transports us to see art and portraiture where it is situated all over the world. This paragraph depicts people throughout the world in ways we would never see them. It brings them right to us in our homes.

Paragraph three: Makes stamps the greatest picture chronicle and miniature encyclopaedia. It illustrates places we never knew about and gives us the opportunity to enjoy these places.

Shows us the horrors of life, the blessings in life, the opportunity to enjoy life. In the final part we are shown things we have created to make our lives easier including the development of locomotion in all forms imaginable. Postage stamps show us (just about) everything we need to know, or want to know.

And in closing it shows how much stamps can teach us, help us, keep away the boredom and entertain us for hours.

Everyone and anyone can collect stamps from kings and queens to people like you and me. Philately is not just a hobby for Kings, it is a hobby for everyone of all ages...

● Depicts rare or highly collectable items

BIBLIOGRAPHY:

Stanley Gibbons Stamp Catalogue. 1981st, 1997th, [Accessed: 30/05/2024.]

The South African Stamp Colour Catalogue: 2019-20. 36th ed., Tracinda Publications, 2010 [Accessed: 15/05/2024]

Wikipedia. Available at: <http://wikipedia.com> [Accessed: 10/05/2024.]

Google. Creator: Larry Page & Sergey Brin. Date: 04/09/1998 Available at: <http://google.com> [Accessed: 10/05/2024]

Stamp World: Creators: A global development. Available at: <https://www.stampworld.com/en/> [Accessed: 10/05/2024]

Tristan da Cunha features essays, stamp petition on new pane of 10: Date: 13/03/2015

Available at: <https://www.linns.com/news/us-stamps-postal-history/2015/march/tristan-da-cunha-features-essays-stamp-petition.html> [Accessed: 30/05/2024]

The 'Potato Essays' - A Petition for Postage Stamps: Date: 08/04/2015

Available at: <https://www.tristandc.com/po/stamps201501.php> [Accessed: 30/05/2024]

Soliloquy of a Postage Stamp

I am the world's greatest traveller.

I've journeyed from pole to pole and all the climes in between . . .
by dogsled, camel and horseback, by every land, sea and air conveyance;
even by submarine, dirigible and rocket.

I am the world's greatest art and portrait gallery.

I portray the greats and the near-greats of all time;
kings and queens, pharaohs and presidents, princes and princesses,
poets and patriots, emperors and explorers, athletes, architects, aviators,
artists and adventurers, tribal chieftains, inventors, moguls,
musicians and martyrs, dramatists and novelists, shahs, sultans, saints and sinners.

Even the vanished forms of the phoenix, dragon,
centaur and unicorn appear on my face.

I am the world's greatest picture chronicle and miniature encyclopaedia.

I map communities, countries and continents,
and reveal views of every strange remote corner of the earth.
I depict mountains and valleys; oceans, rivers, lakes, waterfalls, geysers,
harbours, bridges and dams;
native canoes, sailing ships and modern ocean liners
monuments and statues; castles, cathedrals, churches, missions,
mosques, temples and ruins of temples;
and every type of locomotion, from automobiles to zeppelins
and steamboats to space ships.

I delineate all manner of sports, handicrafts, customs, sacred rites and ceremonies;
and nearly every variety of bird, animal, fish, fruit and flower.

I frame the horrors of war, the blessings of peace, the hardships of emigration,
the plight of indigence and the blight of famine.

I illustrate the adventures of Don Quixote, the fairy tales of childhood
and the legends of all civilizations.

I reflect the symbols of art and culture, of natural resources and industry,
of trade and commerce, of agriculture and architecture, and of all human endeavour(s).

I commemorate the expeditions and voyages, and the inventions,
discoveries and creations that make life worth living.

Millions of men, women and children are fascinated by me.
Through my infinite variety they find boundless pleasure, relaxation and enchantment.

Yet . . . I am only a postage stamp!

From the pen of Ernest W. Brady

Soliloquy of a Postage Stamp

I am the world's greatest traveller.



My travels started when I was placed in a post box in Stockholm, Sweden on 24 October 1931.
 Thereafter I arrived in Cape Town some time in November.
 After a short stay in Cape Town I travelled to Port Shepstone on 21 November.
 Enjoyed having a bit of sun at the beach, I was transported to Barberton on 24 November.
 I then travelled to Godwan River, Mpumalanga on 26 November,
 then onto Nelspruit and finally
 I arrived in Rustenburg on the 27 November 1931

I've journeyed from pole to pole

Beginning on 22 May 1964 – 29 May 1964, these 2 covers were flown on the first Transpolar flight by Lufthansa LH 650/651. Starting in Israel, Frankfurt – Hamburg, Copenhagen – Anchorage, Tokyo



Air Mail – Printed Matter
 Deutsche Lufthansa AG
 Flughafen Hamburg
 2 Hamburg – Germany

and all the climes in between . . .



Snow Clime



Grassland and Forest Clime



Desert Clime



by dogsled.



camel



100th Anniversary of Postal Service in South West Africa - Camel Post

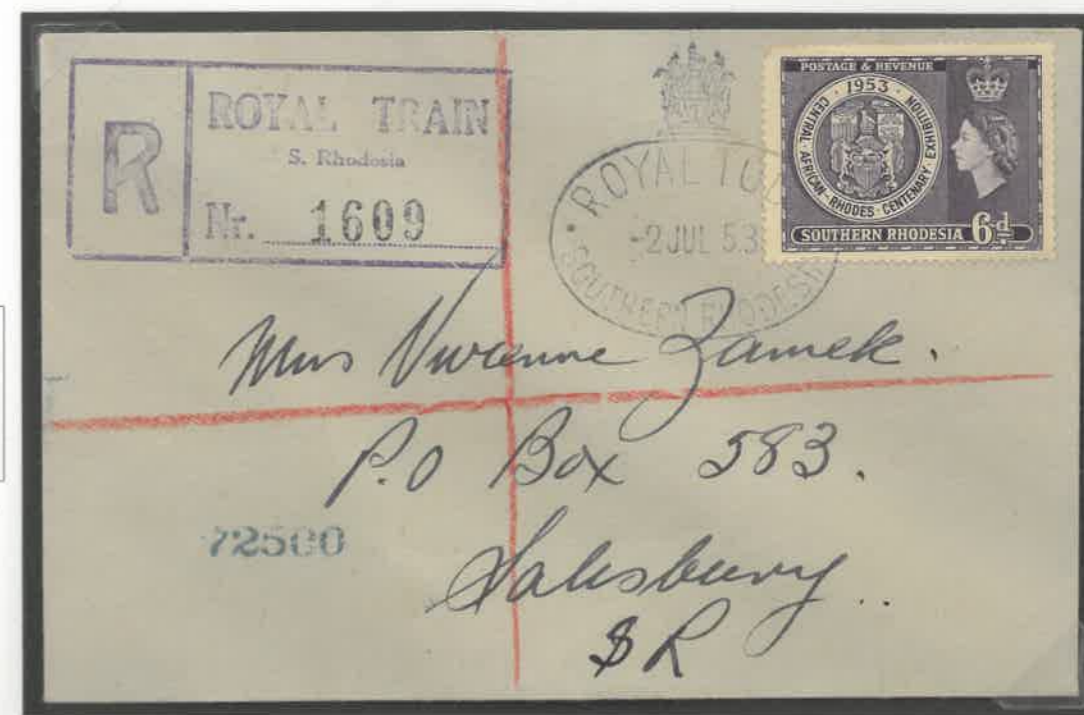


and horseback



Australia 1955 Cover commemorating the early pioneers of the coaching carriers of the Royal Mail throughout Australia

every land,



The Royal Train
The Royal Visit of
HRM Queen Elizabeth
on 2nd July 1953

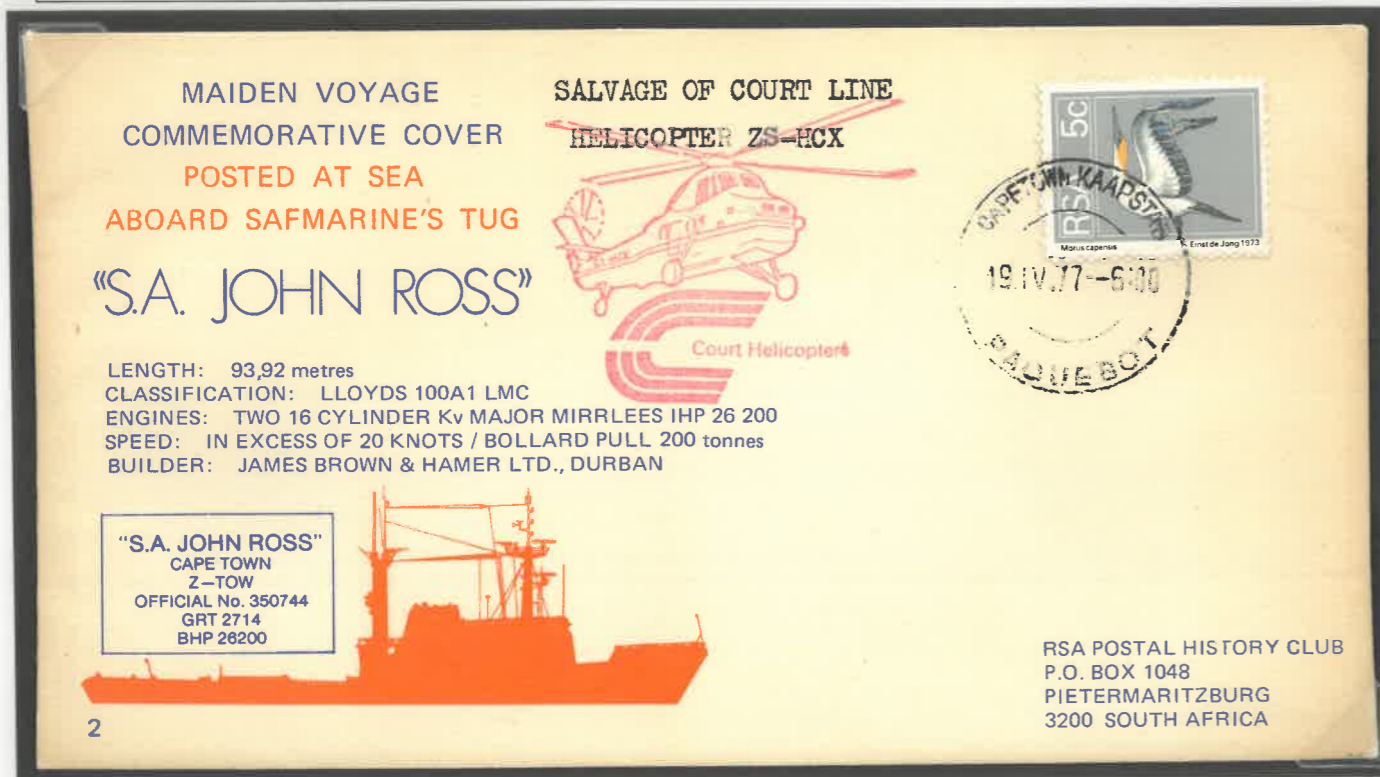


Mr. R. H. Matthews,
P.O. Box 212,
LADYSMITH . . . S. Af.

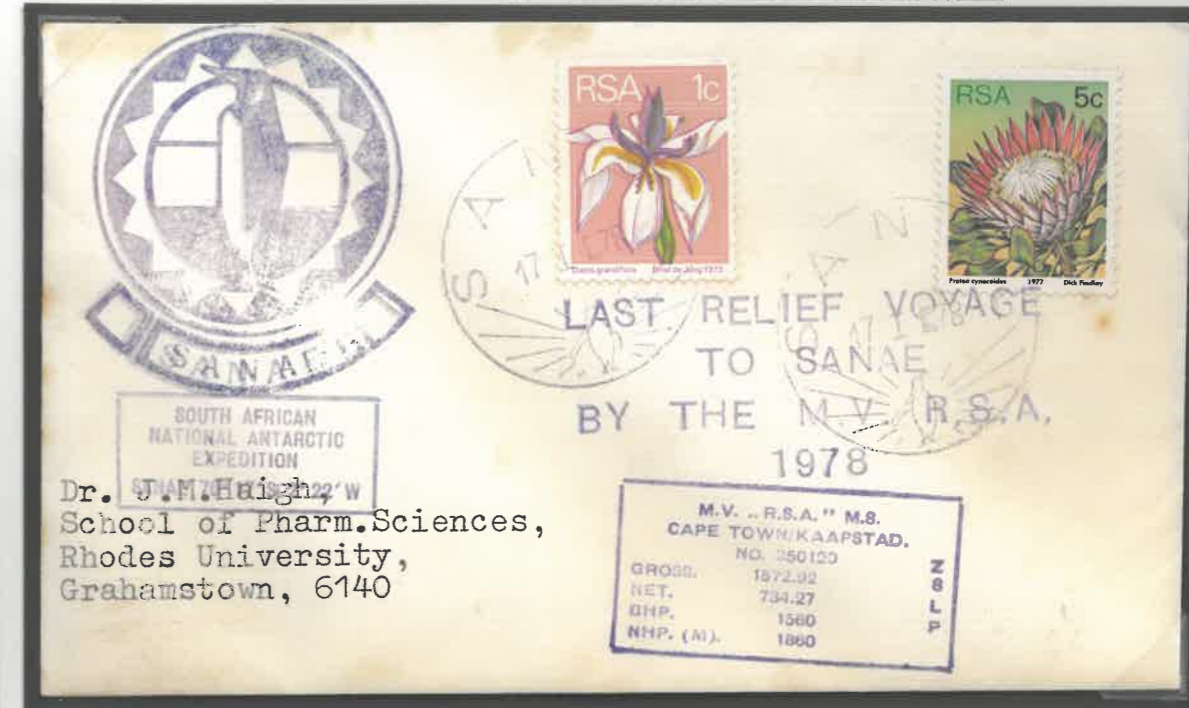
• First steamer to Shanghai, Singapore 27 Feb 1941 then by Airmail to Cape Town



Maiden voyage of the SA John Ross Tugboat. Cover was posted at sea aboard this tug in 19 April 1977



17 January 1978 - Last relief voyage to South African National Antarctic Expedition (SANAE) by the MS RSA



• Tonga - Tin can island canoe mail to being posted at sea aboard the SS Monterey and sent to Cape Town

The Tongan Island of Niuafu'ou is in the south Pacific and is about 3,5 mile long and 3.0 miles wide. It is a submarine volcano surrounded by deep-water with no good anchorage points. Mail was wrapped in greaseproof paper and placed in metal tins for the island and was thrown overboard from ships a mile from the shore. The mail was collected by swimmers who would come to the ships. This was not unusual for the islanders to do as many would be out on the water fishing. These swimmers had to face strong currents and shark infested waters. Sometimes it could take up to 6 hours to retrieve the tin can mail.

In the early 1930s, one swimmer was bitten by a shark and died from the bite. The Tongan government then banned swimming to collect the mail. It was then only permitted in canoes, and the 'Tin Can Canoe Mail' cachet was used.



and air conveyance;

South Africa's first balloon flight over Johannesburg Sunday Times commemorative postcard addressed to Durban, with 2 June 1958 stamped in flight cachet, 3 June 1958 is the Johannesburg date stamp

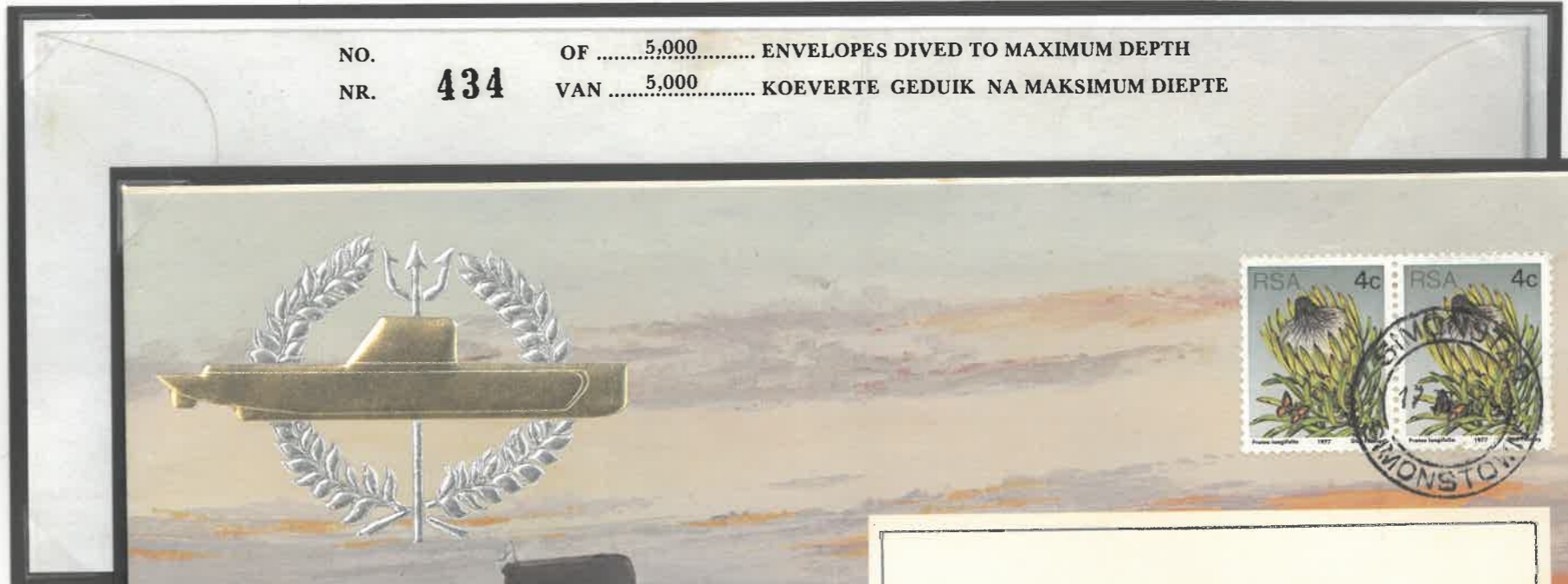


1958 - 10th Anniversary of Helicopter Mail

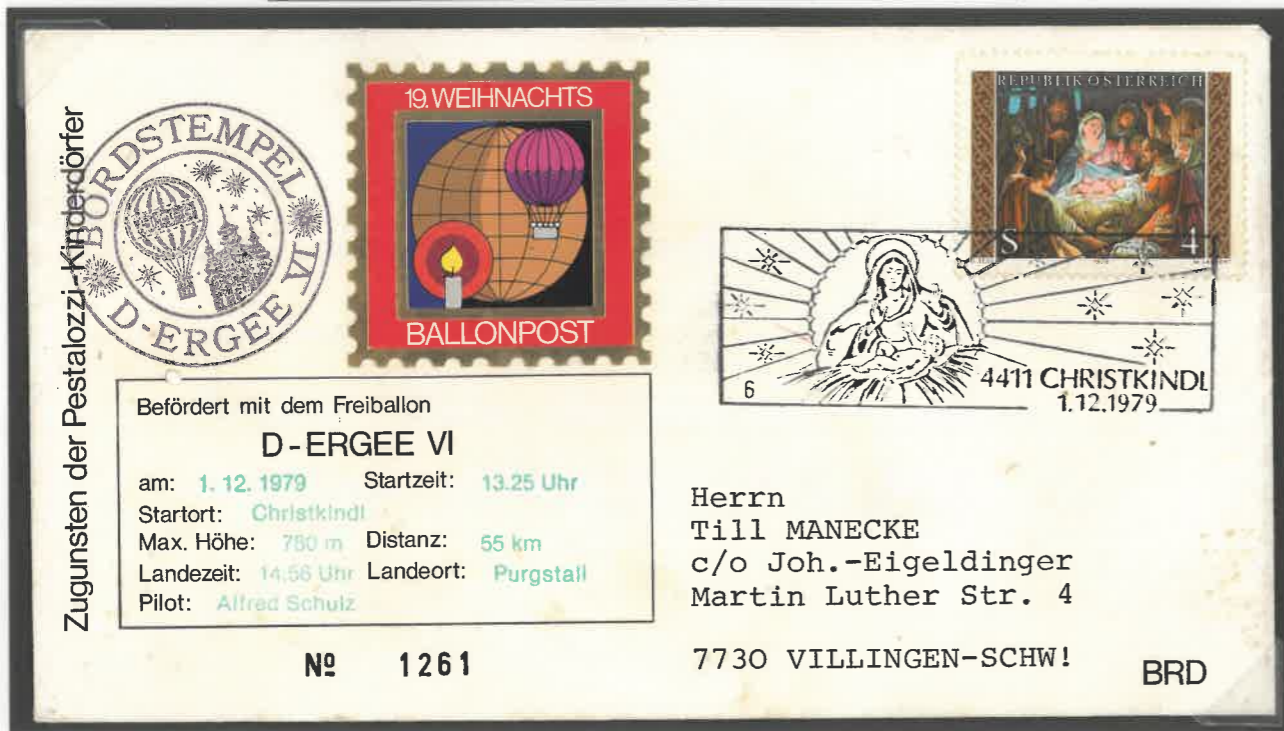


even by submarine.

RSA 1979 - SA Navy commemorative cover celebrating 10 years the daphne class submarine. The SAS Maria van Riebeeck was one of South Africa's first submarines and was launched at Nantes, France by Mrs Elize Botha, wife of the Honourable, Minister of Defence Mr PW Botha on the 18th March 1969. This cover was on board the SAS Maria van Riebeeck and dived to maximum depth



Austria 1 December 1979 Christmas cover onboard Balloon flight D-Ergee VI from Christkindl landing in Purgstall



dirigible

• Brazil – 1932 - Graf Zeppelin Condor cover. Brazil to Germany



and rocket.



• USA – 1983 – Challenger STS8 - Space Cover #423 Serial Number 205053

It was a dark and rainy night, on August 30, 1983, when Space Shuttle Challenger loudly lifted off from Kennedy Space Center, with a five-person crew aboard. Also, aboard were 260,899 specially prepared covers stored in the cargo bay, plus another 1,001 covers carried in the crew cabin.

Cover orbited Earth 98 times in six days, traveling 220 miles above the horizon. As well as the first night launch, the first night landing.

I am the world's greatest art and portrait gallery.



The heroes and heroines of mythology pose within my borders.



Zeus

Hercules

**portray the greats and the near-greats of all time:
kings and queens.**



19 April 1955, King Hussein of Jordan married his first wife, Dina bint Abdul-Hamid

King Fuad I



1963 100th Anniversary of the Dynasty



Prince Makhosetive

princes,

Prince Constantijn



Prince Henrik

emperors

Dom Pedro
First Emperor of Brazil



Emperor Karl V



Emperor Haile Selassie



Queen Sālote Tupou III



The 50th Anniversary of the Birth of King Carl XVI Gustaf

and princesses

Princess Elizabeth & Princess Margaret



Princess Anne



Princess Diana



Princess Catherine & Princess Charlotte



Francis Drake
First to circumnavigate the globe

and explorers,

Leif Erikson
11th century Norse explorer who may have discovered the Americas



Vasco da Gama
First to reach India by sea

pharaohs

Pharaoh Rameses

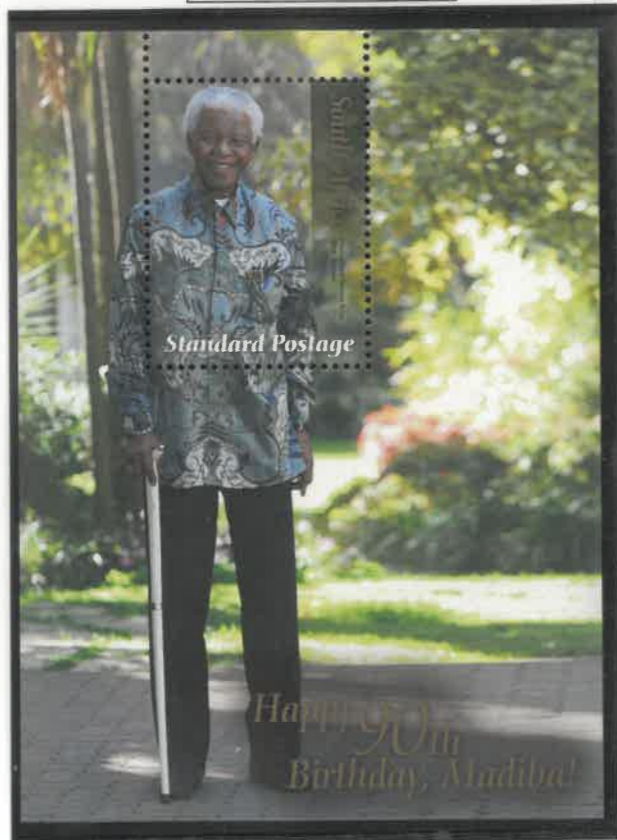


Pharaoh Tutankhamun



and presidents.

Nelson Mandela



Robert Burns



poets

Emily Dickinson



Pen Name: Totius
Jacob Daniël du Toit



and patriots.

Estrada Palma



Josefa Llanes Escoda

Philip Mazzei
Patriot Remembered



Philip Mazzei

athletes.

Gary Player
Golfer



Sarah Storey
Cyclist

Sir Richard Hadlee
Cricketer



architects.

Gian Lorenzo Bernini
Italian sculptor and architect



Inigo Jones
first significant architect in England



aviators.

Pioneer Aviators
Hélène Boucher (1908-1934)
and Maryse Hilsz (1901-1946)



Silvio Pettirossi

Silvio Pettirossi Pereira (June 16, 1887 – October 17, 1916) was a Paraguayan airplane pilot and aviation pioneer.



artists

Pitseolak is recognized as one of the first Inuit artists to create autobiographical works.



and adventurers.

Sir Francis Charles Chichester KBE was a British businessman, pioneering aviator and solo sailor. He was knighted by Queen Elizabeth II for becoming the first person to sail single-handed around the world by the clipper route and the fastest circumnavigator, in nine months and one day overall in 1966–1967



Indian Mount Everest expedition 1965



Amelia Earheart



tribal chieftains.

Hollow Horn Bear
Brulé Lakota chief



Crazy Horse was an Oglala Sioux Indian chief

Dyak Chieftain



Mangbetu Chief

inventors.

Alexander Graham Bell
1847-1922



Sir Sandford Fleming
(January 7, 1827 – July 22, 1915)
Scottish Canadian engineer and inventor



moguls.

Bahadur Shah II
(born **Mirza Abu Zafar Siraj-ud-din Muhammad**)
(24 October 1775 – 7 November 1862), usually referred to by his poetic title **Bahadur Shah Zafar** was the twentieth and last Mughal emperor and an Urdu poet.



musicians

Robert Schuman



Bob Marley



and martyrs.

(a person who is killed because of their faith or political ideologies .)



Nathan Hale 21 years
(6 June 1755 – 22 September 1776)
An American soldier and spy during the American Revolutionary War. On a mission to New York to gather information on the British. He was captured by the British and executed. **Died by hanging**

Joan of Arc
Died: Burnt at the stake



dramatists

Eugene O'Neill



Shakespeare



TS Eliot



and novelists.

Charles Dickens



Edna Ferber

Fredrika Bremer



Prince Sul Khan-Saba Orbeliani



Nadine Gordimer

shahs.

(In Iran or Persia, an emperor or king was historically called a shah)

Ahmad Shah Qajar



Mohammad Shah Reza Pahlavi

sultans.

(A King of an Islamic country)

Sultan Chalifa bin Harub



Sultan Ibrahim

Shaikh Isa bin Salman al-Khalifa



saints

Saint Francis of Assisi

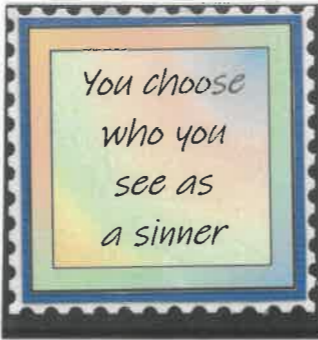


Saint Benedikt from Nursia



Saint Louis

and sinners.



Even the vanished forms of the

phoenix,



dragon,



centaur



and unicorn appear on my face.



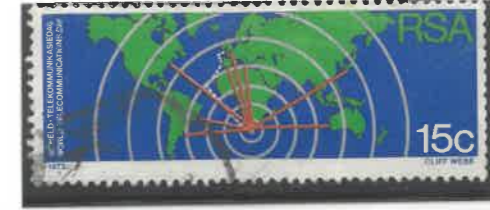
I am the world's greatest picture chronicle and miniature encyclopaedia.

I map communities,

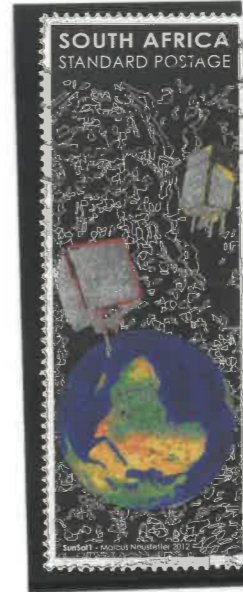
countries



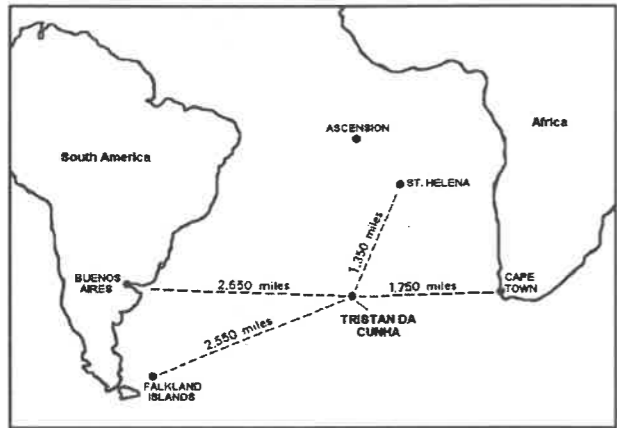
and continents,



and reveal views of every strange remote corner of the earth.



THE MOST REMOTE PLACE ON EARTH



Tristan da Cunha, is a remote group of volcanic islands in the South Atlantic Ocean. It is the most remote inhabited archipelago in the world.

It is situated approximately 2,787 kilometres (1,732 mi) from Cape Town in South Africa, 2,437 kilometres (1,514 mi) from Saint Helena, 3,949 kilometres (2,454 mi) from Mar del Plata in Argentina, 4,002 kilometres (2,487 mi) from the Falkland Islands.

The co-ordinates of Tristan da Cunha are 37.1052° S, 12.2777° W

Tristan da Cunha, which has a diameter of roughly 11 kilometres (6.8 mi) and an area of 98 square kilometres (38 sq mi);

As of October 2018, the main island has 250 permanent inhabitants, who all carry British Overseas Territories citizenship. The other islands are uninhabited, except for the South African personnel of a weather station on Gough Island.

There is no airstrip on the main island; the only way of travelling in and out of Tristan is by ship, a six-day trip from South Africa

THE POTATO STAMP.

When Allan Crawford returned to Tristan da Cunha he realised there was a demand for stamps from the **Loneliest Inhabited Island** in the world. He developed and produced a stamp or "sticker" for the islanders to use on their letters. He enlisted the help from draughtsman Sgt. Jimmy Brown and they came up with 9 rough designs. They did not have permission to use the King George Head on the stamp, so they used the British Union Flag. The islanders had no money so they would not be able to purchase the stamps. However, during WW2 potatoes were used as currency with 4 potatoes equalling 1 penny (1d).

This became the currency and was included into the designs. These stamps earned the nickname "The Potato Stamp."



Kalaallit nunaat Peary Land



Narwhals in Inglefielder Bay, Qaanaaq. 50th Anniversary of Qaanaaq



THE NORTHERNMOST PLACE ON EARTH

North pole is the most northern place in the world. It is not a piece of ground but a floating piece of ice and snow that is constantly on the move. No-one lives there

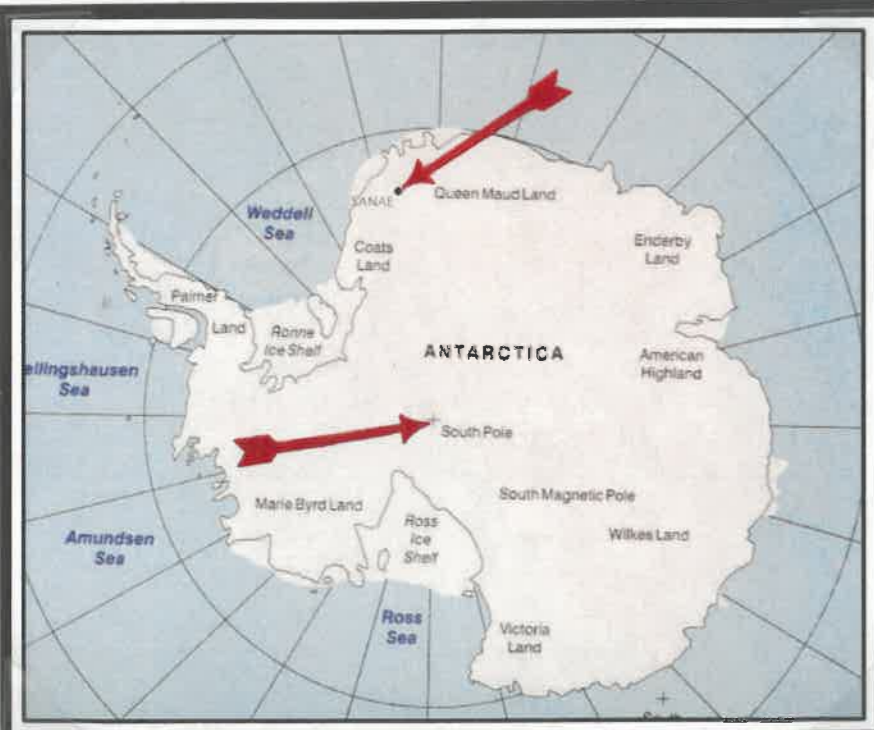
Other than the North Pole there are 3 other northernmost places. But only one has postage stamps

1. Frigg Fjord (Danish: Friggs Fjord) is a fjord in Peary Land, far northern Greenland. The archaeological remains in the northern shore and at the head of this fjord belong to the northernmost human settlements in human history. Further ruins slightly to the north at Cape Bridgman have been found, likely as a short-term expedition from the Frigg Fjord settlement.
2. Alert is in the Qikiqtaaluk Region of Nunavut, on Ellesmere Island (Queen Elizabeth Islands) Canada. Latitude 82° 30'05" north, and 817 km (508 mi) from the North Pole. It is the northernmost place in the world continuously inhabited by temporary residents serving a three- to six-month tours of duty. Staff support the CFS Alert (Canadian Forces Station Alert) and the Alert Airport. Including the Dr. Neil Trivett Global Atmosphere Watch Observatory, a co-located weather station and monitoring observatory, both operated by Environment and Climate Change Canada.
3. Qaanaaq is the Qaanaaq is one of the northernmost towns in the world. Within Greenland, it is the northernmost major

THE SOUTHERNMOST PLACE ON EARTH

South Pole - You cannot go more southern than that. Situated at the South Pole on the continent of Antarctica, it is the United States Amundsen–Scott South Pole Station, which was established in 1956 and has been permanently staffed since that year. The South Pole is the centre of the Southern Hemisphere.

There are a few research stations on the Antarctic continent. **SANAE** - South African National Antarctic (Expedition) now Programme is located on a shelf of the Antarctica at Vesleskarvet in Queen Maud Land, Antarctica. SANAE is staffed throughout the year with the ship SA Agulhas arriving to replenish stock, equipment and changing of staff.





I depict mountains



and valleys:



oceans,



rivers,

Shotover River



Niger River



Fish River



Zambezi River



Kyrenia Harbour



lakes,



waterfalls,



geysers,

Old Faithful Geyser



Pohutu Geyser



Valley of Geysers on the Kamchatka Peninsula, Eastern Russia



harbours,



Melbourne Harbour

The Harbour, Herm



bridges



and dams;

HF Verwoerd Dam



Boulder Dam



Akosombo Dam



native canoes,



Postjacht



sailing ships



Madagascar - Sailing Ship - A traditional Malagasy sailing vessel, or boutre



and modern ocean liners:



David Livingstone



monuments



Voortrekker Monument

Horatio Nelson



Taj Mahal



John Barry



and statues:



Statue of Liberty

Christ the Redeemer



Statue de Jésus dans l'avenue King Edward VII



castles.

Christiansborg Castle



Alcazar of Segovia



Kolossi Castle



Ivrea castle



cathedrals.

Sacred Heart Cathedral



Laon Cathedral



Saint Germans Cathedral



churches.



St. Saviour's Church

German Lutheran Church



St. Peter Church



St. Mary the Virgin



missions.

Inland Mission



Finnish Mission in Olukonda

The Alamo



mosques.

Sultan Hussein Mosque



Aidrus Mosque



Masjid Alwi Mosque

Whaom Temple



temples

Kandarya Mahadeva Temple



Yakushi Temple



and ruins of temples

Temple of Poseidon



Temple of Bziza



Temple of Artemis of Ephesus



and every type of locomotion, from automobiles to zeppelins



Automobile



Broomstick



Cable car



Donkey cart



Elevator



Funicular railway



Parachute



Quadrupeds



Rocket



Sleigh



Tractor



Unicycle



Glider



Hot-air balloon



Ice breaker



Van



Wagon



Xebec



Jet



Kayak



Landing craft



Yacht



Zeppelin



Magic carpet



Narrowboat



Oil tanker

and steamboats to space ships.



I delineate all manner of sports,



handicrafts,



customs,



sacred rites



The 400th Anniversary of the Transfer of the Holy Shroud from Savoy to Turin

and ceremonies:



and nearly every variety of bird, animal, fish, fruit and flower.



the blessings of peace,



the hardships of emigration,



I frame the horrors of war,



the plight of indigence



and the blight of famine.



ISLE OF MAN POST OFFICE FIRST DAY COVER

50th Anniversary of the **BATTLE OF BRITAIN** 1940-1990

I illustrate the adventures of Don Quixote,



the fairy tales of childhood



and the legends of all civilizations.



I reflect the symbols of art and culture,



of natural resources and industry,



of trade and commerce,



of agriculture and architecture,



Union Buildings
Design by
Sir Herbert Baker

and of all human endeavour(s).



Medical & Medicine



Space

Flying



Polar Life



Mining



Sailing



Scientific Endeavours

I commemorate the expeditions and voyages



the inventions, discoveries



and creations that make life worth living.



Food and wine

Telephones

Cars



Music

Millions of men, women and children are fascinated by me.
Through my infinite variety they find boundless pleasure,
relaxation and enchantment.



Yet . . . I am only a postage stamp!

