

THE BRITISH "EASTERN TELEGRAPH COMPANY, LIMITED" IN THE DODECANESE 1912-1931.

The London-based Eastern Telegraph Company had connections with almost the entire world. In Rhodes, it opened in 1870 next to the Turkish telegraph office, but unfortunately no telegrams from the first years of its operation have survived. At the beginning of the 20th century it moved to the Niochori area of the city of Rhodes where some documents were found.

The agency remained in operation during the Italian occupation of the Dodecanese (1st Period 1912-1923) which was the only civilian telegraph service in Rhodes at the time. It continued to operate for a few years during Italian rule (2nd Period 1923-1943). At first the company delivered its telegrams itself to the villages of Rhodes and other islands. Then when the civilian Italian postal service started to operate on 8.6.1912, the telegrams were sent postage free in registered envelopes of the company from the Italian P.O. and were cancelled with the Italian post marks.

The company's 1st telegraph stamp in oval shape and inscribed "THE EASTERN TELEGRAPH COMPANY * LIMITED * Dated / STASION RHODES" found in three types with differences in lettering and dimensions and was used during the 1st period and part of the 2nd period until 1931. The company was pressured by the Italian authorities to Italianize its agency, so it replaced its name with the address where the agency was located and made a round stamp in Italian with the homonymous address "RHODES / VIA DEI CONSOLATI 69" (the street of consulates 69) the date was in the center and the only English word that remained was RHODES. Most of the telegrams we find are with the personal hand stamps of the telegraph operators such as the Italian director A. Eminian, F. Barmann, A. Zitelli, J. Zitelli. When the telegraph forms of Rhodes ran out, they used forms of Athens, Piraeus, France and Pera (Istanbul) stamped on the upper right with the indication mark on box and inside the word RHODES.

In the mid-1920s the Italians completed connecting the islands with submarine cables and established an excellent telegraph service. Consequently, in 1931 the company closed the agency in favor of the Italian telegraph office.

The classification was based on the types of telegraphic forms, company stamps, the personal hand stamps of telegraph operators and the indication marks.



EXHIBITION PLAN

INTRODUCTION (p.1)

1. Message forms with the printed trademark of the company. (p.2-4)
2. Telegraph handstamps of the Company. (p.5-7)
3. Message forms stamped with personal hand stamps of the telegraph operators. (p.8-12)
4. Message forms stamped with indication marks on box with RHODES. (p.13-14)
- 4.1 Message forms, only with printed indication marks. (p.15-16)

BIBLIOGRAPHY

- G.ZISSIMATOS : The postal history of Dodecanese (1309 – 1984).
- F.Filanci, E.Angellieri: I servizi postali in Italia. Storia e tariffe 1861-1985
- M.CARLONI & V.CERCEVA : Storia postale del Dodecaneso (2006).



The company's telegraph office "EASTERN" in 1870

1. Message forms with the printed trademark of the company.

On red and Indication **STATION.**

9.8.1912



THE EASTERN TELEGRAPH COMPANY, LIMITED.

N ^o 1177	R.S.
9	VIII/12

ore 9

STATION.

No. 1/10

9 8 12 190

8 20a

REMARKS.

The following TELEGRAM Received at

From Roma

via "Eastern."

Foreign No. 92

No. of Words 40

Dated 8

Time 8 30pm

To

Generale Amelio
Rh

Nro 14505 in considerazione
gravi condizioni salute ostaggi
Mehemet arif ~~di~~ mia
primo segretario dogana
calimnos prefetto Lucca
re propone rimpatrio
regola significarmi se

Telegram with 40 words originated from Rome on 8.8.1912 to the commander of the Dodecanese islands General G. Amelio. With protocol number 1177 of the military headquarters on 9.8.1912.

Content of the telegram:
The Prefecture of Louka proposes the repatriation of a Turkish customs secretary of Kalymnos to Turkey for serious health reasons.

General G. Amelio.
The 1st commander of the Dodecanese (7.5.1912 - 14.10.1913)




1. Message forms with the printed trademark of the company.

On red and Indication **RHODES STATION**. M.F. Type 5/20

28.10.1914

(Message Forms 5/20.)



THE EASTERN TELEGRAPH COMPANY, LIMITED.

RHODES STATION.

Clerk's Name. *B* No. *7* 28-10-19

REMARKS. *gd* The following TELEGRAM Received at *Malie* 8.20

From *Malie* via "Eastern."

Foreign No. *26/20* No. of Words *27* Dated *27* Time *6 40* m.

To *Kadiligin 1389 Oumsumi*
73 Hossousi Rados
D. 6. Teprivevel 330 imaredamire
Tajami hakktendata maybata astraf
Kazaretine gunderildigutendun oraya
Omudjet Odonmaril

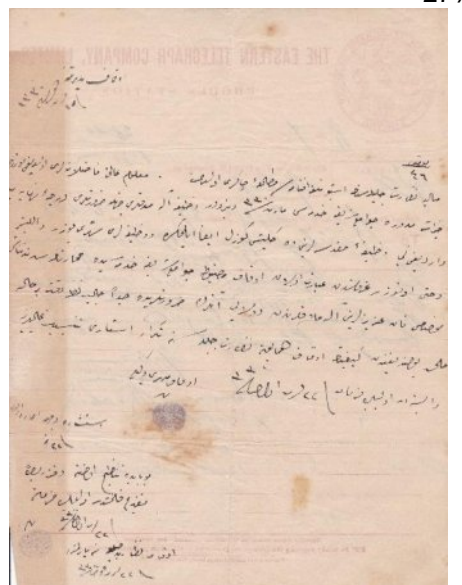
Malie
Kazirine

The telegram with 26 words from Maliye (Turkish Ministry of Finance) was a correspondence between this official institution and the Ministry of Foundations. The text on the front page is written in Turkish with Latin letters. This is very uncommon. Most likely because the telegraph officer is not Turkish. The Turkish part is handwritten in old Turkish Rikka type.

27%

Back side

There is an answer written in accordance with what was written before. Upper left corner: Foundations directorate, 15 October 1914 Text: They sent a document and money. We are waiting for an answer.



1. Message forms with the printed trademark of the company.

On blue and Indication **RHODES STATION**. M.F. Type 5/11

1916

(Message Forms 5/11, 12 & 13.)

No. of Telegram 12

THE EASTERN TELEGRAPH Co., LTD.,

FORM FOR TELEGRAMS TO ALL PARTS OF THE WORLD.

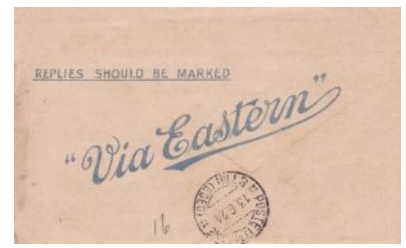
No. _____		RHODES STATION.		Head Offices:— ELECTRA HOUSE, FINSBURY PAVEMENT, LONDON, E.C.	
Words.	Code.	Charge.	Sent at _____ M.		
Date.	Instructions.				
<i>Via Eastern</i>					
To <u>Questura Napoli</u>					
1968- Proveniente Napoli imbarcato clandestinamente pirasca noleggiato Bebe qui giunto Napoli Anaceto di Augusto					

Important Telegrams should be repeated.—Quarter-rates extra charged for repetition.

Telegram with protocol number 1968 from the military command of Rhodes to Naples.
 Text: It refers to a released person who smuggled himself into Rhodes from Naples, sought work as a confectioner, was arrested and the military lawyer of Rhodes asks the competent authority in Naples if there are any commendable acts against this person. The answer to this telegram can be found in (p.9) on 1.7.1916.
 The rest of the information (origin, shipments, number of words and date) must be found on the receipt.

11.6.1924

36%



Cover with the printed trademark of the Co. on blue.

When the civil Italian postal service started to operate on 8.6.1912, the telegrams were sent postage free by registered envelopes of the company from the Italian Post Office, cancelled with the Italian postmarks.

Cds Register pmk of Rhodes P.O. on 11.6.1924 arrival in Symi island of Dodecanese on 13.6.1924.

2. Telegraph handstamps of the Company.

PERIOD I :1912-1923 (Italian occupation)

43%



19.6.1913

PPC from Rhodes 19.6.1913
 Cancelled with Italian pmk
 Arrival in Syros (Island of Greece)
 on 9.6.1913 and cancelled with
 Greck pmk.
 There are twelve days difference
 between the Gregorian and
 the Julian calendar.

**International rate bay the
 Italian P.O.:** 1907-1921
 Rome Agreements of 1906
 PPC 10c.
 Franked at the correct postage
 of e 10c. Italian stamp (type Leoni).



Cds **THE EASTERN TELEGRAPH COMPANY * LIMITED *
 RHODES 19 JUN.1913/STATION.** Oval handstamp on lilac **type A** 38x30mm.
 The sender was a Greek from Rhodes and probably worked for the telegraph Co.
 For that reason, it was stamped with the company's seal.

Type **A** is **unique** up to the present. The imprint of this pmk is presented as an
 example in the bibliographies of G.Zisimatos (1984) and M. Carloni (2006).

Received Message Form in English with indication **STATION.** Type 5/26

14.02.1921

(Message Form 5/26.)
THE EASTERN TELEGRAPH COMPANY, LIMITED.
 (Received Message Form.)

Date _____ 19____

Local No. 166	Stn. from 30	Time	By	Handed (Govt)	H. M. Conf.
Arrivato il 14 FEB 1921			Clerk.		
N. di Prot.					

TELEGRAM To _____ TELEGRAM From Palermo

No. _____ Words 25 Date _____ Time 10

REMARKS
 To Regio governo Rhodiaceo

Telegram with 25 words originated from Palermo.
 cds **THE EASTERN TELEGRAPH COMPANY * LIMITED * RHODES 14 FEB.1921 / STATION**
 Oval handstamp on lilac **type Aa** 38x30mm.
Rate: (Period 1920-1930) each word was about 50c.total paid 12L.

Type **Aa** is the same as above type **A** with difference only in lettering, is **unique** and is not mentioned in any bibliography.

2. Telegraph handstamps of the Company.

PERIOD II :1923-1943 (Italian Territory)

Received Message Form in Greek with 2-line indication mark **PIRAEUS STATION / ΤΗΛΕΓΡΑΦΕΙΟΝ ΠΕΙΡΑΙΩΣ**
Type 5/22.

If the T. forms of Rhodes had run out, they used forms of Athens, *Piraeus* and *Pera* (Constantinople). **2.10.1927**

(Message Forms 5/22.)

THE EASTERN TELEGRAPH COMPANY, LTD.

PIRÆUS STATION.
ΤΗΛΕΓΡΑΦΕΙΟΝ ΠΕΙΡΑΙΩΣ.

(Greek Received Form)

Date } 1927 10 29
'Ημέρα }

Local No.	Stn. from	Time.		Clerk's Name.	Handed Govt.	H. M.	
		H.	M.				
200	as	13	40			13	40

TELEGRAM From } Athens
ΤΗΛΕΓΡΑΦΗΜΑ 'Εκ }

No } 29 } Date } 29 } Time } 12 40 } REMARKS }
'Αριθ. } Δέξεις } 'Ημέρα } 'Ωρα } Παρατηρήσεις }

To } Kasse pour Koucas }
Προς } Rhodes }

Telegram with 8 words originated from Athens

cds **THE EASTERN TELEGRAPH COMPANY * LIMITED * RHODES 2 OCT.1927 / STATION**

Oval handstamp on lilac **type Ab** 37x27mm.

Rate: (Period 1920-1930) each word was about 50c.total paid 4L.

Type **Ab** is **unique** up to the present. The imprint of this pmk is presented as an example in the bibliographies of G.Zisimatos (1984) and M. Carloni (2006).

Handwritten notice,
signed by the director
(A. Eminyan)
of the company who
also acted as
telegraph operator.

cds **THE EASTERN
TELEGRAPH COMPANY
* LIMITED * RHODES
18 NOV.1927 / STATIO**
handstamp **type Ab**.

Handstamp
types A, Aa (p.5)
and **Ab** (p.6) are the same
with different sizes
and lettering.

No

per i quali detto telegramma abbia
transitato, e che sempre tali pratiche
subiscono ritardi non lievi, quest'Ufficio
si fa premura di scrivere alla
Direzione Divisionaria con preghiera
di sollecitare e fornire gli
schiarimenti richiesti.

Con distinta osservanza
Il Direttore della "Eastern"

A. Eminyan

THE EASTERN TELEGRAPH COMPANY
RHODES
18 NOV.1927
STATION
LIMITED

2. Telegraph handstamps of the Company.

PERIOD II :1923-1943 (Italian Territory)

Received Message Form in Greek with 2-line indication mark **PIRAEUS STATION / ΤΗΛΕΓΡΑΦΕΙΟΝ ΠΕΙΡΑΙΩΣ**
Type 5/22.

12.4.1930

(Message Forms 5/22.)

THE EASTERN TELEGRAPH COMPANY, LTD. **PIRAEUS STATION.**
ΤΗΛΕΓΡΑΦΕΙΟΝ ΠΕΙΡΑΙΩΣ.

(Greek Received Form.) Date } 5 19
'Ημέρα }

Local No.	Stn. from	Time. H. M.	Clerk's Name.	Handed Govt.
3008	Paris	17.39	Γ. Γ. Γ.	Handed Govt.

TELEGRAMS from } *Paruspo*
ΤΗΛΕΓΡΑΦΗΜΑΤΑ Έκ }

No. } 4 Words } Date } 5 Time } 13.15 REMARKS } *Handed Eastern*
'Αριθ. } λέξεις } 'Ημέρα } "Ωρα } Παρατηρήσεις } *14.30*

To } *Masse*
Προς } *Rhodes.*

Prevoys out

Telegram with 4 words originated from Paris cds **RHODES * 69 VIA DEI CONSOLATI * 12 APR. 30**
Round handstamp on lilac **type B** 40mm. **Rate:** (Period 1920-1930) each word was about 50c.total paid 2L.

The company was pressured by the Italian authorities to Italianize its agency, so it replaced its name with the address where the agency was located and made a round stamp in Italian with the homonymous address "VIA DEI CONSOLATI,69 RHODES" and the only English word that remained was RHODES.

Types **A** (p.5), **Ab** (p.6) and **B** (p.7), of the company's hand stamps are **unique**, whose imprints is presented as an example in the bibliographies of G.Zisimatos (1984) and M. Carloni (2006). They are taken and presented from my exhibit.

4.3.1923

32%

The Eastern Telegraph Company, Ltd.

PERA STATION.

No. *118* Date } 4 19

Station to *Thessalonika S. Frankis*

Received Ps. *[Signature]*



Staff of the Eastern telegraph company in Pera, Constantinople in 1922.

Proof of receipt of a telegram from Eastern company of Rhodes
The form is from Pera (Constantinople) dated 4.3.1923.

3. Message forms stamped with personal hand stamps of the telegraph operators.

Received Message Form in Greek with 2-line indication **ATHENS STATION / ΤΗΛΕΓΡΑΦΕΙΟΝ ΑΘΗΝΩΝ**

Type 5/22

1.7.1916

(Message Forms 5/22.)

THE EASTERN TELEGRAPH COMPANY, LIMITED. ATHENS STATION. ΤΗΛΕΓΡΑΦΕΙΟΝ ΑΘΗΝΩΝ.

(Greek Received Form.)

Date } RHODES 19
'Ημέρα }

Local No. 214	Stn. from	Time. H. 6 M. 49	By A. EMINYAN, Clerk. 1 JUL 1916	Handed Govt.	H. M.
---------------	-----------	------------------	----------------------------------	--------------	-------

TELEGRAM From } *Rapote*
ΤΗΛΕΓΡΑΦΗΜΑ 'Εκ }

No. } 1968
'Αριθ. } 1968
Words } 31
Δέξεις }

Date } 1
'Ημέρα }

Time } 12
'Ωρα }

REMARKS } *30*
Παρατηρήσεις }

To } *Stato avvocato Militare*
Προς } *Rodriguez*

2-line dated personal hand stamp of the telegraph operator **A. EMINYAN / 1 JUL. 1916** on lilac.
 Telegram with 31 words originated from Naples **Rate:** (Period 1920-1930) each word was about 50c.total 31x0,50=15,5L.
 Also is stamped with lilac boxed indication mark in the upper right part writing **RHODES**.
 In this telegram reply the competent authority of Naples to the telegram of Rhodes with no.1968 protocol (p.4 of this exhibit) to the state military attorney that the prisoner at Rhodes had committed no offense at Naples.

Received Message Form with indication **RHODES STATION**. Type 5/25

17.7.1921

(Message Forms 5/26.)

THE EASTERN TELEGRAPH COMPANY, LIMITED. RHODES STATION.

(Received Message Form.)

Date _____ 19

Local No. 40	Stn. from	Time. H. 1 M. 30	By F. BARMANN, Clerk. 17 JUN 21	Handed Govt.	H. M.
--------------	-----------	------------------	---------------------------------	--------------	-------

TELEGRAM To _____ TELEGRAM From *Cania*

No. _____ Words _____ Date *17* Time *11, 30*

REMARKS _____

To *Patite Michalargias*

Cds **F. BARMANN / 17 JUL. 1921** 2-line telegram operator mark on black.
 Telegram with 7 words originated from Cania (Crete) **Rate:** (Period 1920-1930) each word was about 50c.total 7x0,50=3,5L.

3. Message forms stamped with personal hand stamps of the telegraph operators.

(p.9)

Received Message Form with indication **PERA STATION** (Constantinople). Type 5/25

25.2.1923

THE EASTERN TELEGRAPH COMPANY, LIMITED.

(Message Forms 5/25.)

PERA STATION.

(Received Message Form.)

Date _____

A. ZITELLI
25.FEB23 19

Local No. <i>7</i>	Stn. from <i>Per</i>	Time. <i>4.7pm</i> H. M.	By <i>A. ZITELLI</i> 25.FEB23 Clerk.	Handed Govt. <i>[Signature]</i>	H. M.
--------------------	----------------------	-----------------------------	--	---------------------------------	-------

TELEGRAM To _____

TELEGRAM From *San Francisco*

No. _____

Words *32*

Date *25*

Time *9.30 am*

REMARKS _____

To *Per*

Per *Carta Circa* *Rhodes*
Informazioni data e
Soma che Michele D Thomas
page carte credito per
causa signora maria fallai
rapporto importante telegrafico
subito risposta pagata

2-line dated personal hand stamp of the telegraph operator **A. ZITELLI / 25 FEB 23** on black.

Telegram with 32 words originated from San Francisco. Rate: (1920-1930) each word from USA was about 1L. total 32x1=32L.

Received Message Form with indication **RHODES STATION**. Type 5/25

1.3.1923

THE EASTERN TELEGRAPH COMPANY, LIMITED.

(Message Forms 5/25.)

RHODES STATION.

(Received Message Form.)

Date _____

Local No. <i>27</i>	Stn. from <i>Per</i>	Time. <i>4.37</i> H. M.	By <i>A. ZITELLI</i> -1.MAR23 Clerk.	Attivato il <i>1</i> MAR 1923 Handed Govt. <i>4796</i> di Prot. <i>2/5</i> Catag.
---------------------	----------------------	----------------------------	--	--

TELEGRAM To _____

TELEGRAM From *San Francisco*

No. _____

Words *29*

Date *1*

Time *9.30 am*

REMARKS _____

To *Per*

2-line dated personal hand stamp of the telegraph operator **A. ZITELLI / -1.MAR 23** on black.

Telegram with 29 words originated from San Francisco. Rate: (1920-1930) each word from USA was about 1L. total 29x1=29L.

3. Message forms stamped with personal hand stamps of the telegraph operators.

(p.10)

Received Message Form with indication **RHODES STATION**. Type 5/25

4.9.1924

(Message Forms 5/25.)

THE EASTERN TELEGRAPH COMPANY, LIMITED. RHODES STATION.

(Received Message Form.)

Local No. 18	Stn. from Can	Time. 20/30	Date. 4 SEP. 24	Clerk. JAMES ZITELLI	Article N. 7991	Handed Govt. 20/6	Date. 6 SEP. 1924
--------------	---------------	-------------	-----------------	----------------------	-----------------	-------------------	-------------------

TELEGRAM To _____ TELEGRAM From _____
 No. _____ Words 22 Date 4 Time 19

REMARKS Rps Rps Regio Governatore Podi
 To _____

Pregasi voler telegrafare se Ibrahim Gervish capetan Cretese stabilito Cos da ventennio e iscritto anagrafe e protetto italiano
 Italconsul

2-line dated personal hand stamp of the telegraph operator **JAMES ZITELLI / -4.SEP. 24** on black.

Telegram with 22 words originated from Cania (Crete).

Rate: (1920-1930) each word was about 50c. total 22x0,50=11L.

27.9.1924

(Station Books 2/22.)

THE EASTERN TELEGRAPH COMPANY, LIMITED. RHODES STATION.

Nº 20381 27-9 1924 1039

Received for telegram to
 Fonderie Veraci
 Firenze
 P 25 the sum of Pts. 43 60

FOR THE EASTERN TELEGRAPH COMPANY, LIMITED.

W. & S. Ltd.

Payment receipt from Rhodes to France with indication mark on black **RHODES STATION** on 27.9.1924 for 25 words the sender paid 43,60 Drachmas (12,50 in Italian Lire).

3. Message forms stamped with personal hand stamps of the telegraph operators.

(p.11)

Received Message Form with indication **RHODES STATION**. Type 5/25

1.11.1929

THE EASTERN TELEGRAPH COMPANY, LIMITED.

(Message Forms 5/25.)
RHODES STATION.

(Received Message Form.)

Date 1. 11. 19 29

Local No. <u>28</u>	Stn. from <u>Q</u>	Time H. <u>20</u> M. <u>6</u>	By <u>A. ZITELLI</u> -1 NOV 29 Clerk.	Handed Govt.	H. M.
------------------------	-----------------------	----------------------------------	--	--------------	-------

TELEGRAM To _____ TELEGRAM From Paris po

No. _____ Words 38 Date 1 Time 14.15

REMARKS HE SW

To Charles Masse Rhodes
Laurium engagea pour parler nouvelle

2-line dated personal hand stamp of the telegraph operator **A. ZITELLI / -1.NOV 29** on black.

Telegram with 38 words originated from Paris Rate: (Period 1920-1930) each word was about 50c.total 38x0,50=19L.

France Received Message Form with indication **BUREAU DE RHODES (RHODES OFFICE)**. Type 5/25

2.2.1930

THE EASTERN TELEGRAPH COMPANY, LIMITED.

(Message Forms 5/25.)
BUREAU DE RHODES.

(Formule d'arrivée.)

Date 2. 2. 19 30

No. local. <u>16</u>	Reçu de <u>S</u>	Heure H. <u>19</u> M. <u>12</u>	Par <u>A. ZITELLI</u> -2 FEB 30 L'employé	Remis au Gouvernement.	H. M.
-------------------------	---------------------	------------------------------------	--	------------------------	-------

TELEGRAMME Pour _____ TELEGRAMME De Paris po

No. _____ Mots 11 Date 2 Heure 16

INDICATIONS SPECIALES

A Charles Masse
Rhodes
Ecrivimes sante bonne
cables votre affaires
marchent embrassons

2-line dated personal hand stamp of the telegraph operator **A. ZITELLI / -2.FEB 30** on black.

Telegram with 11 words originated from Paris Rate: (Period 1920-1930) each word was about 50c.total 11x0,50=5,50L.

(2/23)

Comunicazione

The Eastern Telegraph Company Limited.
Rhodes Station.

Il 29 Maggio 1926

No. *[red scribbles]*
Oss. Direzione Municipale
Rhodes, 1926

Si prega la S. V. di voler
permettere di intonacare e
bianchire l'Ufficio telegrafico
della Eastern sito in via dei
Consolati N.º 69.

Con distinta osservanza
Il Dire. della Eastern

A. Eminian

1818
COMUNE DI RHODI (Egno)

1818
29/5/26
Data
Firma



Rudilw 26

Request for repair of the company's building to the Municipality of Rhodes franked with a Italian overprinted revenues stamp R. GOVERNO DI RODI of 1 PIASTRA (Ottoman money) and protocol number 1818 on 29.5.1926 signed by the manager A.Eminian at the new address where the company was renamed to RHODES * 69 VIA DEI CONSOLATI. p.7 of this exhibit with the new round handstamp of the Company.

16.2.1913

Payment receipt with indication
CHIOS STATION
 (Chios Greek island, situated
 in the northern Aegean Sea),
 from Rhodes to Roma,
 stamped with blue
 indication mark on box with **RHODES**
 on 16.2.1913
 the sender paid 47,52 Dr.
 (10,80 in Italian Lire) for 22 words.

The payment receipt belongs to the
 following copy of the telegram
 in message form type 5/26.
 His destination was
 Benedetto law office in Rome.

(Station Books 9/57.)
The Eastern Telegraph Company, Ltd.
 CHIOS STATION,
 No. 29640
 Station to Roma
Benedetto
 Received Drachmas 47.52
 16-2-19
 10.80
 R

(Message Forms 5/26.)
The Eastern Telegraph Company, Ltd. Local No. _____ **RHODES Station**

Transmitting Form.	Inst. No.	Received		190	Inst. No.	Transmitted		190
	Stn. from	Time.	By		Stn. to	Time.	By	
		h. m.		Clerk.		h. m.		Clerk
		" m.				" m.		

Station To _____ From _____
 Foreign No. _____ No. of wds. _____ Date _____
 Remarks _____
 To Name Avvocato di Benedetto
 Address Via Pierluigi da Palestrina - Roma
Per deferenza l'assegnaria il 22
corrente rinvio causa a 1° marzo.
Saluti:
Presidente
Montanari

Received Message Form in Greek with

2-line indication **ATHENS STATION / ΤΗΛΕΓΡΑΦΕΙΟΝ ΑΘΗΝΩΝ** Type 5/22

21.6.1916

(Message Forms 5/22.)

THE EASTERN TELEGRAPH COMPANY, LIMITED. ATHENS STATION. ΤΗΛΕΓΡΑΦΕΙΟΝ ΑΘΗΝΩΝ.

(Greek Received Form.)

Date } 21
'Ημέρα } RHODES 6 1916

Local No. 23	Stn. from Cn	Time H. 2 M. 6 P	By [Signature]	Handed Govt. }	H. M.
			Clerk.		

TELEGRAM From } Grottaferrata
ΤΗΛΕΓΡΑΦΗΜΑ 'Εκ }

No. } 1948
'Αριθ. } 21. 6. 916

Words } 30
Δέξεις }

Date } 21
'Ημέρα }

Time } 19.35
'Ωρα }

REMARKS }
Παρατηρήσεις }

To } [Signature]
Προς } [Signature]

Stamped with blue Indication mark on box with **RHODES** dated **21.6.1916**.

Telegram with 30 words originated Grottaferrata (Commune of Rome)

Rate: (Period 1920-1930) each word was about 50c.total 30x0,50=15L.

Received Message Form with indication **STATION** Type 5/25

2.9.1916

(Message Forms 5/25.)

THE EASTERN TELEGRAPH COMPANY, LIMITED. RHODES STATION.

(Received Message Form.)

Date } 2 Sept 1916

Local No. 22	Stn. from Cn	Time H. 3 M. P	By [Signature]	Handed Govt. }	H. M.
			Clerk.		

TELEGRAM To _____ TELEGRAM From } Salonica

No. _____ Words } 12 Date } 31 Time } 7pm

REMARKS _____

To } [Signature]
Προς } [Signature]

Stamped with blue Indication mark on box with **RHODES** dated **2.9.1916**.

Telegram with 12 words originated from Salonica

Rate: (Period 1920-1930) each word was about 50c.total 12x0,50=6L.

4.1 Message forms, only with printed indication marks.

(Message Form 5/25.)

THE EASTERN TELEGRAPH COMPANY, LIMITED. STATION.

(Received Message Form.)

Date 21 6 1919

Local No. <u>4860</u>	Stn. from <u>Com</u>	Time <u>12:55 pm</u>	By <u>[Signature]</u>	Handed Govt. <u>[Signature]</u>
			Clerk.	

TELEGRAM To No. 23 Words 49 TELEGRAM From Date 21 Time 9/

REMARKS Consulat Grece

To Rhodes

Votre 169^{ste} instruction publique n'a donne aucun ordre relatif ajournement examens ecoles ^{de} Rhodes. Par consequent cours sont prolonges jusqu'en fin juin. D'ailleurs selon decret royal examens proprement dits sont supprimees. Note de classement eleves sera etabli d'apres notes semestrielles.

Diomed

Waterlow & Sons Limited, Printers, London Wall, London.

Message form type 5/25 with printed indication mark **STATION**
 Official Telegram with 49 words originated from Greek consulate of Rhodes on 21.6.1919
 to the Commissioner for the Administration of the Islands of Rhodes, with protocol number 4860 on the back side. 29.6.1919

27.5.1928

Payment receipt with indication **ATHENS STATION** on 27.5.1928 from Rhodes to Alexandria (The word Athens was removed with a pencil and replaced by the word Rodi "Rhodes" in handwriting). The sender paid 38 Dr. for 26 words

(Station Books 9/57.)

THE EASTERN TELEGRAPH COMPANY, LIMITED. ATHENS STATION.

No. 27658 801 Rodi 27-5-1928 157

Received for telegram to Leo Comitegit Alexandria

P. 16/19 the sum of Drachmas 38-

FOR THE EASTERN TELEGRAPH COMPANY, LIMITED.

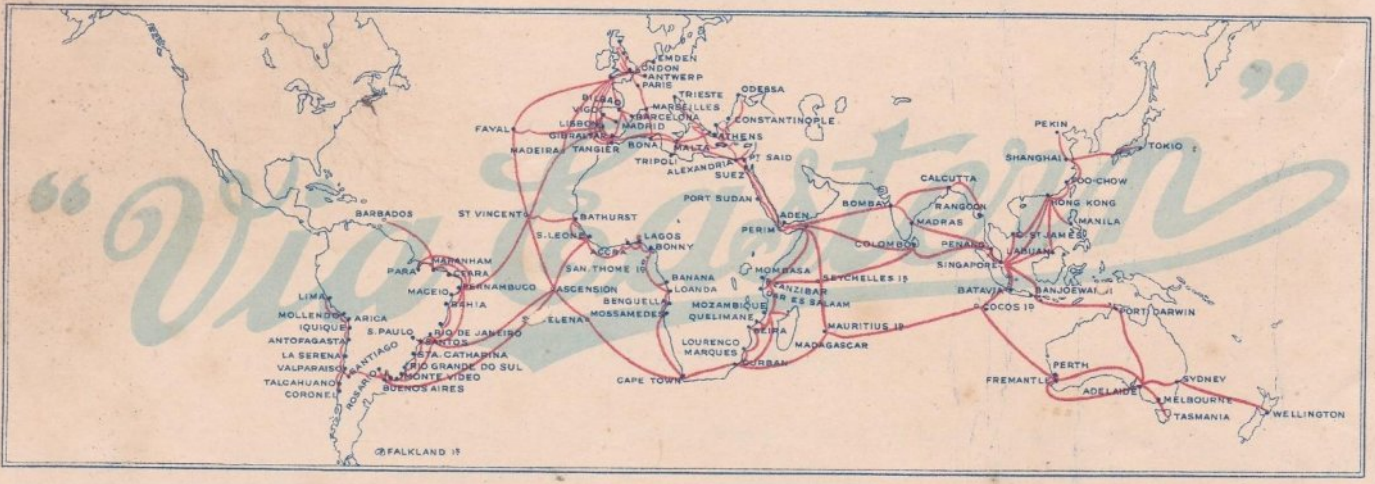
W. & S. Ltd.

4.1 Message forms, only with printed indication marks.

31.12.1928

THE EASTERN TELEGRAPH COMPANY LIMITED

de la taxe principale. Pour éviter les erreurs il est important d'écrire lisiblement.



No.	Mots.	Expédié à No. et Circuit
Heure en Code	Taxe	
Indications officielles	<i>"Via Eastern"</i>	Par

A (Nom du destinataire) MASSE

France Message form arrival in Rhodes on 31.12.1928

Greeting telegram on the last day before the new year 1929.

France Received Message Form with indication **BUREAU DE RHODES (RHODES OFFICE)**. Type 5/25 **20.9.1931**

(Message Forms 5/25)

THE EASTERN TELEGRAPH COMPANY, LIMITED. BUREAU DE RHODES.

(Formule d'arrivée)

Date 20 9 1931

No. local.	Recu de	Heure H. M.	Par	Remis au Gouvernement.	H. M.
<u>24</u>	<u>Ca</u>	<u>20/31</u>	<u>[Signature]</u>		

TELEGRAMME Pour _____ TELEGRAMME De Belgian Congo

No. _____ Mots 9 Date 20 Heure 10 5/25

Escombris



Telegram with 9 words originated from Belgian Congo (notify) on 20.9.1931. This telegram was one of the last from the company. **Rate:** From Africa (Period 1920-1930) each was about 1L. total paid 9L. Franked with e 3 Lire Italian revenues stamp and cancelled with the criminal court of Rhodes mark. (The recipient needed it as evidence in court)