

THE CENTENARY OF THE ARRIVAL OF THE BRITISH SETTLERS 1849.

INTRODUCTION

In 1949, the centenary of the arrival of the Natal Settlers, a special stamp, 1½d stamp, was issued, to commemorate the centenary of the arrival of the Settlers in 1849 by the Post Office.

The stamps were printed as 2 different issues and these issues were in 2 different colours of claret - pale and deep claret).

Note: The first cylinder, cylinder 7021 was not printed on the margins where the other printing (deep claret) had 29 on the margin; the perforation for both printings were 15x14.

Twelfth May 2019 marked the 175th anniversary of the arrival in Durban of the first vessel, Wanderer, sailed on 24 January 1849 with 108 emigrants and arrived on 16 May 1849 with the first boat load of 108 Settlers off the Bluff. 15 Byrne passengers arrived among the Settlers. The term 'Byrne Settler' means any emigrant brought to Natal by the company, J. C. Byrne & Co. In all some 20 sailing vessels of varying sizes left England under Joseph Charles Byrne's Emigration Scheme and a total of 57 vessels brought close to 5000 settlers to Natal. The idea of the scheme was to bring over suitable immigrants who would leave an England troubled by depression and the effect of the Industrial evolution on the cottage industries. The history of the Byrne Emigration Scheme is documented in history and other books.

AIM

This exhibition aims to show the different printings of the Natal Settlers stamp.

TREATMENT

Shown are the arrow blocks, the different cylinders, sheet numbers, varieties, FDC's and non-constant varieties.

RARITY

Shown are unusual items marked with an orange circle.

INDEX

Introduction – Page 1

Cylinder 7021 – Page 2

- Constant Varieties – Page 2
- Recorded Variety in the SACC – Page 4
- Not Recorded but constant Varieties – Page 5

Cylinder 29 – Page 9

- Constant recorded Varieties - Page 9
- Not Recorded but constant Varieties – Page 11
- Multipositive Varieties – Page 14
- First Day Covers – Page 15

BIBLIOGRAPHY

Own study: Prof. Sam Lubbe. OFS Philatelic Society.

The Stamps of the Union of SA 1910-1961 by SJ Hagger

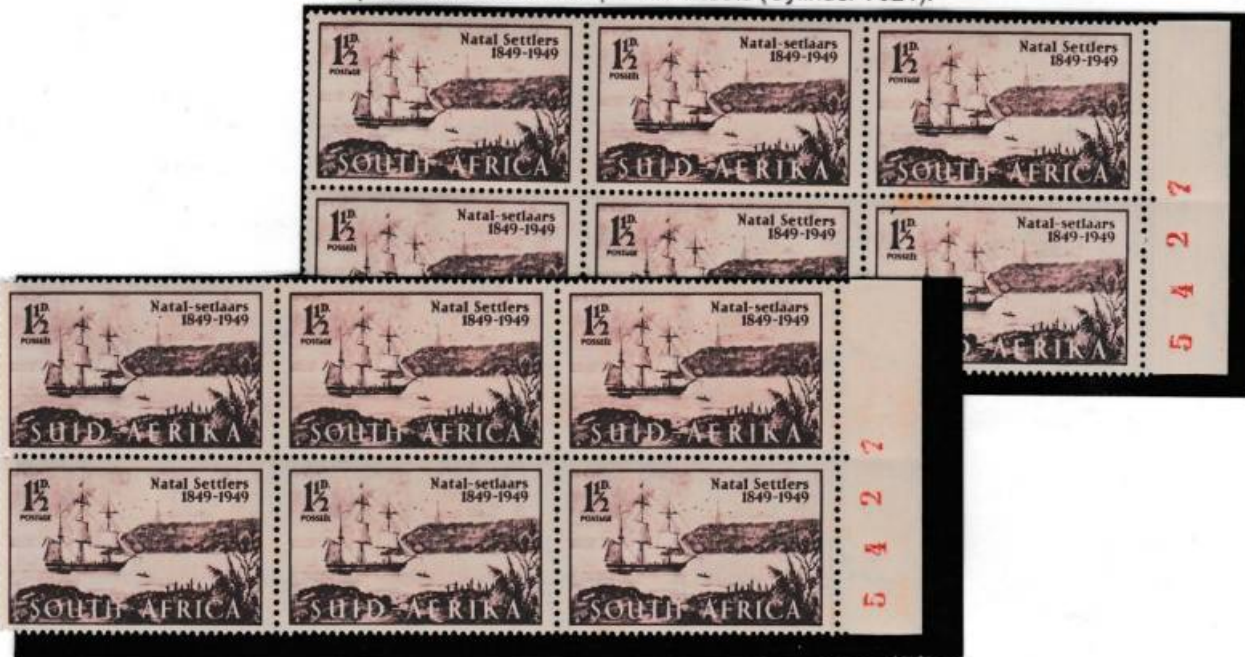


The right hand corner block of 4 of cylinder 7021 showing no cylinder number can be seen on page 7 of the exhibition.

The top and bottom marginal arrow blocks of Cylinder 7021. Please note the colour as pale claret. Also, note the 'radio mast' on land (Bluff). The vessel is the Wanderer with 118 emigrants (15 Byrne emigrants).



The blocks of 6 showing serial number 5427 printed in red. These two blocks indicate that 2 serial numbers were printed on each of the printed sheets (Cylinder 7021).



Constant recorded varieties noted during the printing of Cylinder 7021. There are 6 constant varieties according to the SA Handbook (Federation/Hagger). Variety 1 is from row 2/4 and shows an "accent" mark above the r of Settlers.



The second variety is from row 5/5 and shows an extended serif on the small numeral 1 in the value.



Variety 3 is from row 9/2 and shows a white dot in the middle of the large numeral 1 in the value. There are some Dr Blade marks in the margin - left hand.



Variety 4 is from row 10/3 and 10/4 and shows a slanting line between the frames of the adjoining stamps.



Variety 5 is from row 11/5 and shows a spot below postage (below st). Variety 6 is from row 12/6 and shows one large and two smaller spots between the land and the ship.



Row 12/5 (top middle stamp) shows a dot in the rigging of the mainmast. Row 12/6 (top right hand stamp) shows a dot outside the frame below the h of South. This stamp also show the constant variety 6 (showing one large and two smaller spots between the land and the ship). Row 13/5 (centre middle stamp) shows a second dot to the right of the d (abbreviation) of pence. Row 14/5 (lower middle stamp) shows a u shaped mark on the top of the Bluff. Row 14/6 (lower right hand stamp) shows an extra bird in the sky.



There are some Dr Blade marks in the margin - left hand. Row 14/2 shows Variety 11. Row 14/3 (top right hand margin of the block of below) shows rain dots to the left of the ship. Row 15/2 (second middle stamp of the block of below) shows many dots between the land and the vessel. Row 16/1 (third row left hand stamp of the block of below) shows a curved line in the sea below the Bluff. Row 18/1 (bottom left hand stamp of the block of below) shows swimmers in the sea by the rowing boat. Row 18/2 (bottom middle stamp of the block of below) shows two dots below the 9 of 1849 and first 9 of 1949.



Row 17/4 (left hand stamp of the stamps below) shows a curved line in the sea below the Bluff. Row 17/5 shows variety 12 (showing a streamer attached to the top of the foremast).



Row 18/5 (middle stamp of the stamps below) shows a dot to the left of Natal and a dot below the second 9 of 1949.



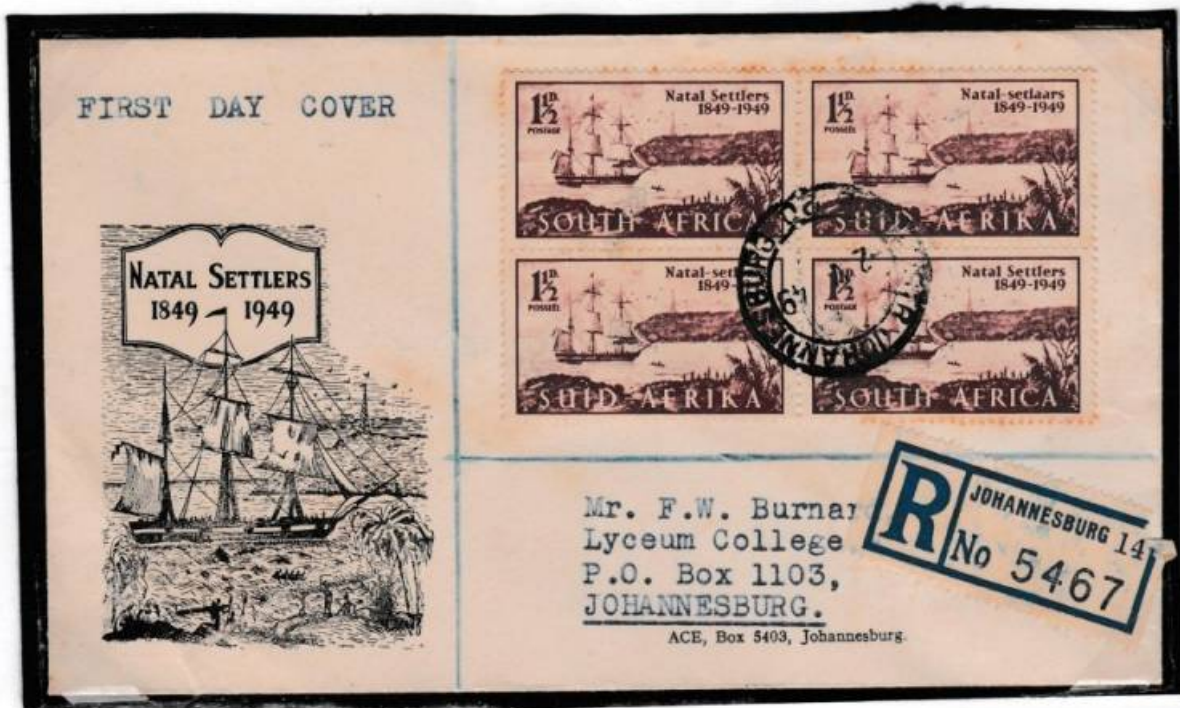
Row 19/4 (top right hand stamp in left block) shows a dot in the sail of the foremast. Row 20/5 (bottom left hand stamp right hand block) shows a large dot attached to the bush. This is also the control for cylinder 7021.



A marginal arrow block of 4 showing misplaced perforations across the centre of the block.



A block of 4 used on a smaller type FDC, registered to Johannesburg on 2 May 1949 and received in Johannesburg on 2 May 1949.



A mint block of 40 of the 1½d 1949 Settlers. These sheets or part of sheets are extremely brittle and many complete sheets do not exist. Some varieties were noted on the sheet below - sheet no. 7021. The sheet also shows a top marginal arrow and the ½ of the side arrow on the left.



MULTI-POSITIVE VARIETIES OF CYLINDER 7021

The two screened cylinders, number 7021 and number 29 were etched from the same multi-positive plate and therefore identical varieties appear on both cylinder printings. The left and right margin arrow blocks showing varieties 7, 8 and 9. Variety 7 is from row 11/1 and shows a wishbone shaped cloud to the right of the main mast and an additional cloud flaw at the top of the foremast. Variety 8 is from row 11/2 and shows a mark leading upwards from the cloud to the top frame line, at the right of the main mast. Variety 9 is from row 11/6 (the right arrow block) and shows a large white spot on the tail of the S in Suid. There are some Dr Blade marks in the margin - left hand.



Variety 10 is from row 13/2 (see below block of four) and shows a lighting mark in the cloud behind the value. Variety 11 is from row 14/2 in the form of a v (lying on the side) at the top of the main mast. There are some Dr Blade marks in the left hand margin.



A Marginal block of 8 showing the sheet number 6345 in red and variety 12. Variety 12 is from row 17/5 and shows a streamer attached to the top of the foremast.



The top of the stamp below shows that stamp was mis-perfed and used on an envelope.



A BLOCK OF 4 OF CYLINDER 7021 ON RUBBER REGISTERED CACHET FIRST DAY COVER (NOT TIED - FDC coloured in) AND A PAIR OF STAMPS (FDC not coloured in).

NATAL SETTLERS

1849 - 1949



NATAL SETLAARS

1849 * 1949

FIRST DAY COVER - 2ND MAY, 1949

Handwritten: 21

DURBAN
No.



Handwritten: 6/3

Mrs. I. M. Butler.

1107, South Street,

Hatfield. Pretoria.

NATAL SETTLERS

1849 - 1949



NATAL SETLAARS

1849 * 1949

FIRST DAY COVER - 2ND MAY, 1949



Handwritten: T. P. Hall Esq.,

Handwritten: Box 39

Handwritten: Walvis Bay, South Africa

CYLINDER 7021 – CONTINUE – VARIETIES

NOT RECORDED BUT CONSTANT VARIETIES PARTICULAR TO CYLINDER 7021.

Row 3/1 (top left hand stamp) shows a short horizontal line near the sandbank.

Row 4/1 (lower left hand stamp) shows a dot after the 9 of 1949. Row 4/2 (lower middle stamp) shows a Dr Blade mark cutting the 9 of 1849 and continuing to the Bluff.

Row 4/3 (lower right hand stamp) shows 6 birds in the sky. There are some Dr Blade marks in the margin - left hand.



Row 6/4 (left hand stamp) shows a dot under the first 9 of 1949.

Row 6/6 (right hand stamp) shows a shadow in the bay below the Bluff.



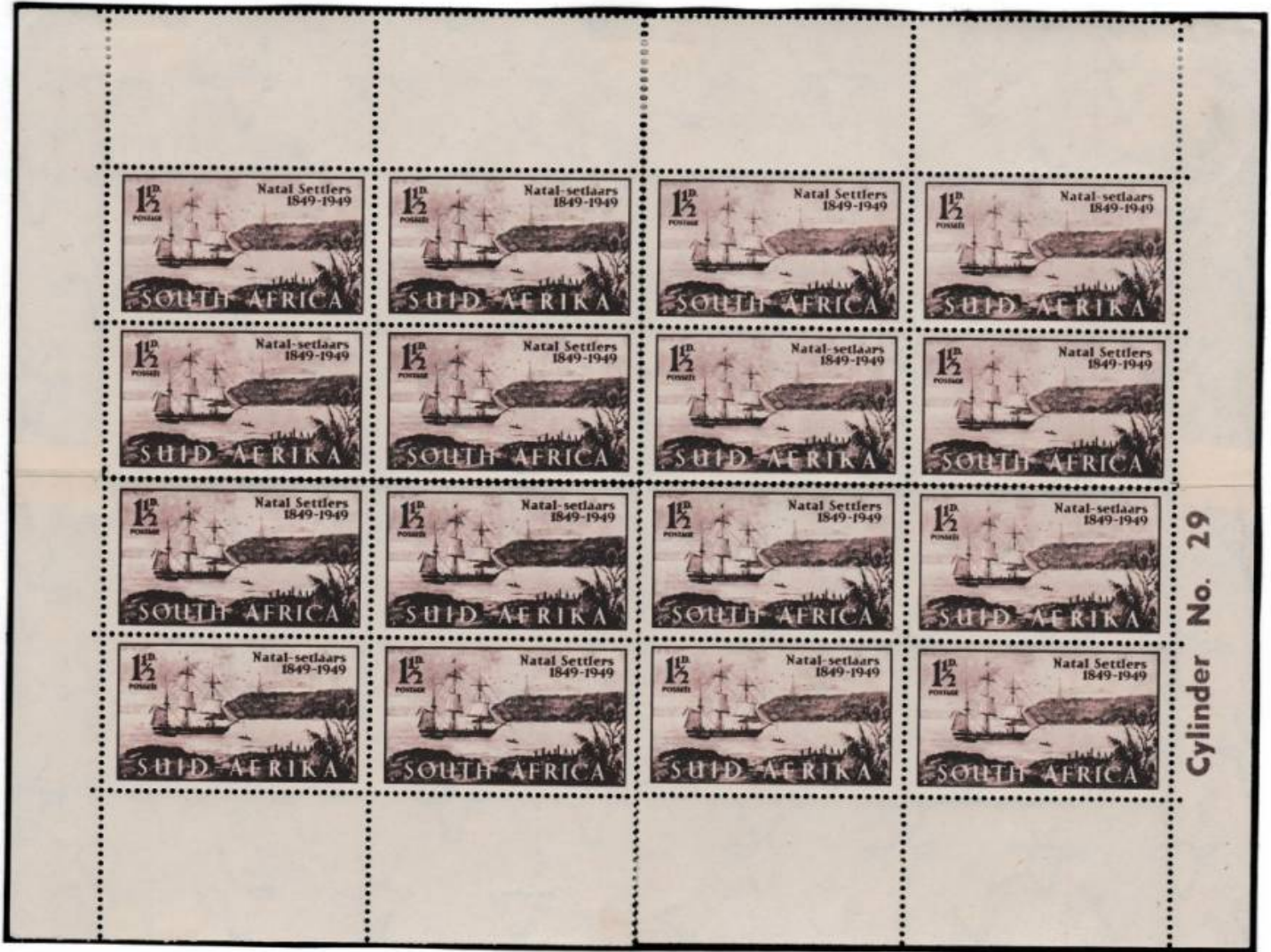
Row 7/3 (top right hand stamp below) shows a dot outside the frame above the s of settlers.

Row 8/1 (lower left hand stamp below) shows a dot below the "N" of Natal, a dot above the "R" and first "S" of settlers and a dot above the Bluff below the first 9 of 1949. There are some Dr Blade marks in the margin - left hand.



Cylinder 29

The sheet below is a reconstructed sheet from this cylinder showing the 4 corners of the full sheet of 120. The right hand corner block of 4 of cylinder 29 showing the cylinder number. Stamps printed from this cylinder were deep claret in colour and was printed with the cylinder number in the usual right hand margin of the block of 4 - opposite rows 19 and 20.



The top and bottom marginal arrow blocks of Cylinder 29. Bit of Dr Blade mark on the top arrow block to the left. Extra perforations on the border of the bottom arrow block.



A Dr Blade variety extending through the left hand stamps of both blocks, giving a double lighthouse impression in row 1/1. The Dr Blade mark shows an extended lighthouse on the top left hand stamp of the second block and can be seen to move to the right of the lighthouse on the remaining 2 left-hand stamps.



A block of 14 on a registered envelope with a Johannesburg registered label with a posted out of course rubber cachet used on the first day of issue. This is from cylinder 29.



A marginal block of 4 showing the sheet number in serial in red, printed in an off-set position. This block also shows a Dr Blade variety through the 2 right hand stamps and a dot between the foremast and mainmast on the lower right hand stamp.



Constant recorded varieties found on Cylinder 29.

There are 6 constant recorded varieties specific to this cylinder. They were numbered V1 - V6. Variety 1 is from row 9/5 and shows a hyphen between Natal and Settlers. In the right hand block variety 2, row 10/1, shows a Native in white shorts above the ik of Afrika.



Variety 3 (left hand block) is from 17/1 and shows a loose rigging mark under the top yardarm of the foremast. Variety 4 in a pair, 17/3, shows a curved mark above the Bluff under the numerals 49-19.



Variety 5, 18/3, shows a mark joining the tail of the flag to the top of the mainmast. Variety 6 is from row 18/4 and shows a dot under the 8 of 1849.



MULTI-POSITIVE VARIETIES OF CYLINDER 29

There are 6 recorded multi-positive varieties and the following are identical to the varieties V7 - V12 of Cylinder 29. Variety 7 is from row 11.1 and shows a wishbone shaped cloud to the right of the main mast and an additional cloud flaw at the top of the foremast. Variety 8 is from row 11/2 and shows a mark leading upwards from the cloud to the top frame line, at the right of the main mast. Variety 9 is from row 11/6 (the right arrow block) and shows a large white spot on the tail of the S in Suid. There are some Dr Blade marks in the margin - left hand (left hand block).



Variety 10 is from row 13/2 (see below block of four) and shows a lighting mark in the cloud behind the v. Variety 11 is from row 14/2 in the form of a v (lying on the side) at the top of the main mast. Variety 12 is from row 17/5 and shows a streamer attached to the top of the foremast.



A block of 16 (below) showing varieties 13 and 11 (top row second stamp and second row second stamp). Row 13/3 (top row third stamp) shows a short line extending down from the D of the pence symbol. Row 15/4 (third row right hand stamp) shows an extra bird in the sky below the Na of Natal.



Row 19/2 (top-right hand stamp of the block on the left) shows dot above the second s of setlaars. Row 20/1 (top-right hand stamp of the block on the left) shows a dot in the sea to the left of the ship. Row 20/5 (lower-left hand stamp of the block on the right) shows a short line attached to the top of the N of Natal. Row 20/6 (lower-right hand stamp of the block on the right) shows 2 dots inside and outside the frame above the second e of settlers.



Rows 19 and 20 (right hand stamps) show a Dr Blade variety starting from the D of Suid on the upper stamp and giving an impression of a fourth mast in the lower stamp.



NON RECORDED BUT CONSTANT VARIETIES PARTICULAR TO CYLINDER 29.

Although un-recorded as constant varieties, after research by the presenter of this collection, he found that the following varieties are constant to cylinder 29. Row 2/3 (lower right hand stamp on the left hand block) shows a dot above the stamsmast. Row 3/6 (lower right hand stamp on the right hand block) shows a curved line after the 9 of 1949.



Row 8/2 (right hand stamp on the left hand pair) shows 6 ("birds") in the sky. Row 7/4 (top left hand stamp on the right hand block) shows a dot between the mainmast and the foremast. Row 8/6 (lower right hand stamp on the right hand block) shows a dot below the 1 of 1849.



Row 9/5 shows variety 7. Row 9/6 (top right hand stamp of the left block of 4) shows a short line extending from the first 9 of 1949. The top right hand stamp (of the right block of 4) shows a horizontal line running parallel to the Bluff under the 49 of 1849.



A block of 4 of cylinder 29 on FDC



A block of 10 on a registered Official Envelope with a Pietermaritzburg registered label used on the first day of issue. This is from cylinder 29. This carried the correct postage to England, The air label is added on the top left.

