

THE ½d SPRINGBOK POST CARDS OF THE UNION OF SOUTH AFRICA

INTRODUCTION

Many postal stationary cards were issued by the Union of South Africa from 1931 to 1961.

Of these, 10 different post cards with the ½d Springbok head were issued between 1927 and 1941.

Two issues PC 10 and PC 17 were picture post cards with numbers in the front. PC 10 with green numbers and PC17 with black numbers.

The largest, six issues, were ordinary post cards without pictures.

The last two issues, PVC 21 and 21a, were printed with pictures in green and white in the front without numbers.

The ½d Springbok post cards were issued over a 14 year period.

BILIOGRAPHY

- Joof van der Merwe: Own study.
- Handbook/Catalogue Union of South Africa Stamps – 2nd Revised Edition – 1979 by Dr. T.B. Berry, Sam Legator, W. N. Sheffield, S.J. Hagger.
- S.A. Philatelist – Various issues.

ISSUE PC10 - TYPE 8 – 1927

Also referred to as the Wembley Cards as this was originally produced in 1924 for the British Empire Exhibition, held at Wembley in London. These cards were supplied by the Publicity Department of the South African Railways.

Twenty four pictorial postcards were produced with the Springbok head design unhyphenated, ½d for inland use, additional space for a 1d stamp for overseas use. The stamp was printed in black and green.

NOTE - Numbers in green on the back of the Post Card.

Inscription in green "POST CARD - Arms - POSTKAART" - For address only - Net vir die adres.

NOTE – The Coat of Arms of PC10 is slightly larger than PC 17 and numbers in green on the back of the Post Card.



ISSUE PC11 - TYPE 9

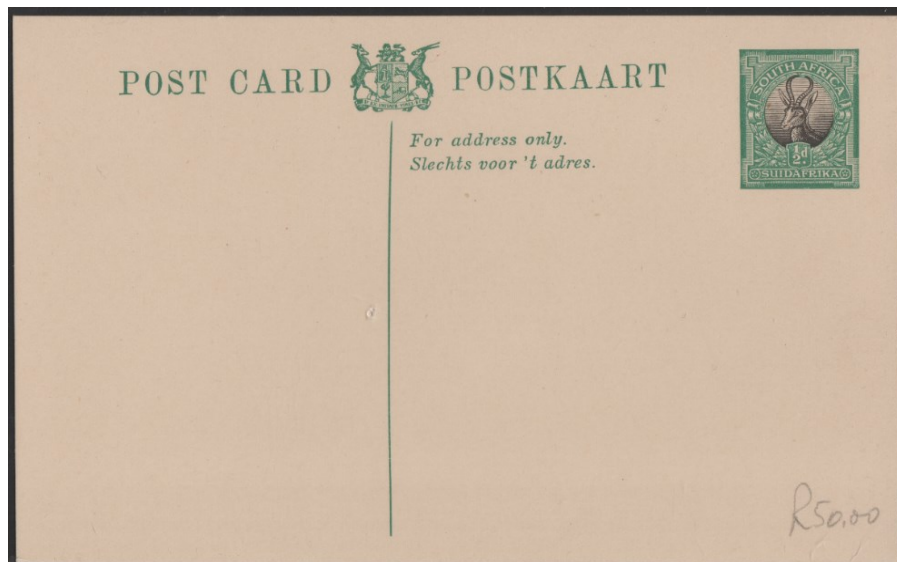
The ordinary postcard was produced in 1928.

The Springbok head design, green and black, black lines in the vignette, with SOUTH AFRICA in curve at the top and SUID AFRIKA unhyphenated in the bottom, not curved.

NOTE: English inscribed stamp at the top and Afrikaans at the bottom.



Inscription in green, "POST CARD - Arms - POSTKAART" - For address only - Slechts voor't adres.



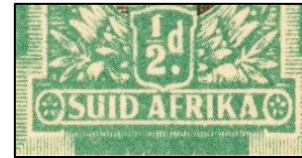
ISSUE PC 15 – TYPE 11

An ordinary **postcard issued in 1933.**

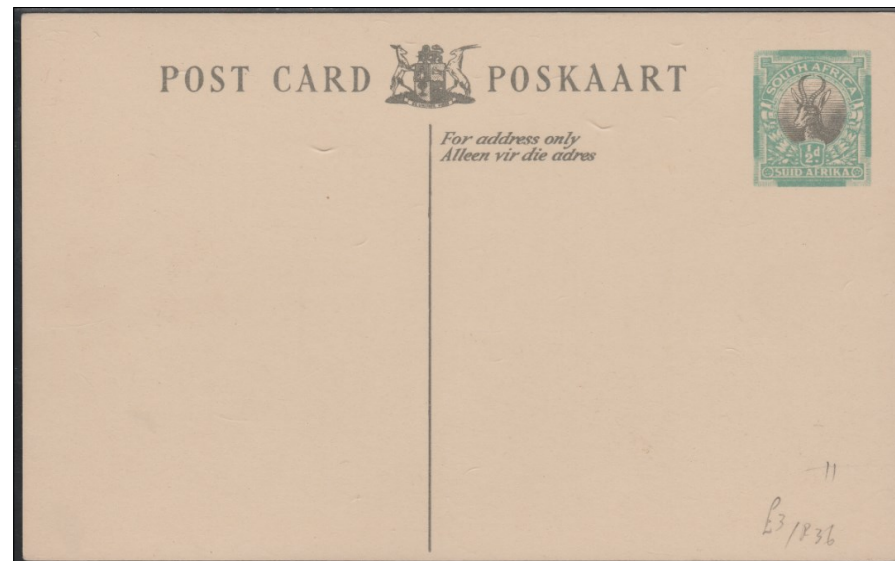
The Springbok head design, green and black, black lines in the vignette, hyphenated, with SOUTH AFRICA in curve at the top and SUID AFRIKA in the bottom, not curved.

Made in packets with 12 post cards.

NOTE: English inscribed stamp at the top and Afrikaans at the bottom.



Inscription in black, "POST CARD - Arms - POSKAART" - For address only - Alleen vir die adres

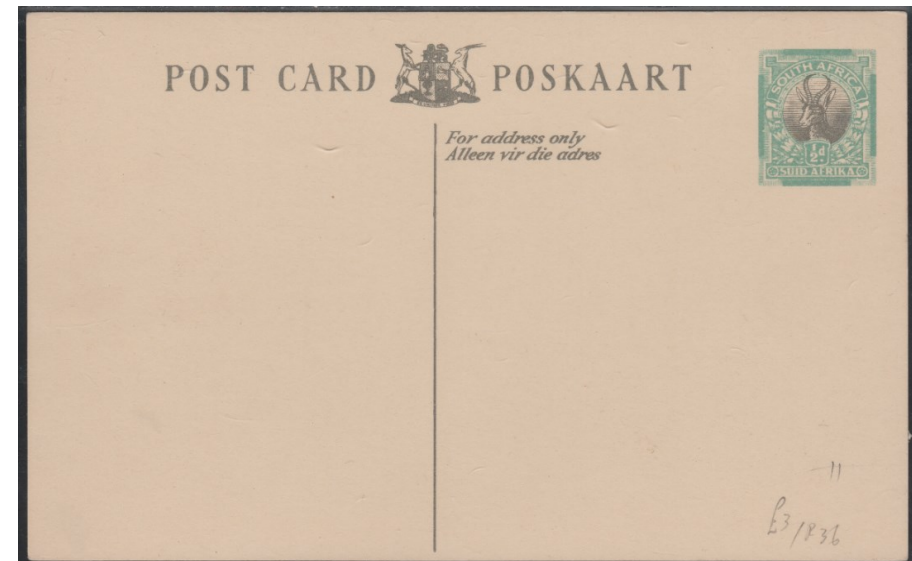
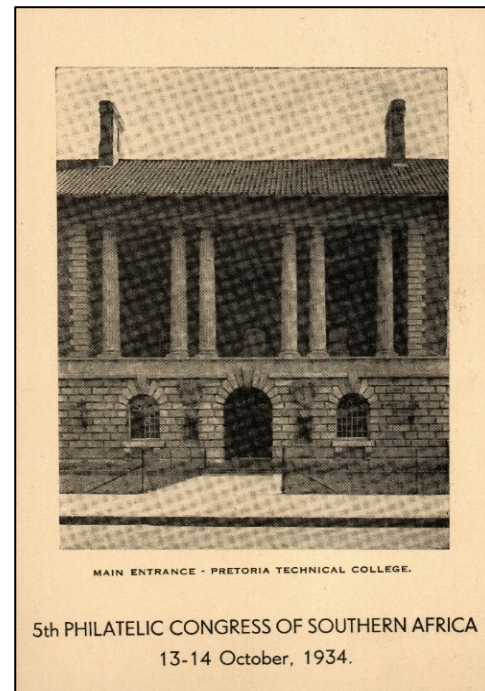


ISSUE PC 15 – TYPE 11 - CONTINUE

NATIONAL STAMP EXHIBITION – PRETORIA

Post card PC 15 used for the National Stamp Exhibition – Pretoria from 13 to 14 October 1934.
A temporary Post Office was opened for one day only, 13th October 1934, with a special date stamp.

The exhibition committee issued 500 special post cards, not numbered, showing the entrance to the Technical College at the back.



ISSUE PC 17 – TYPE 12

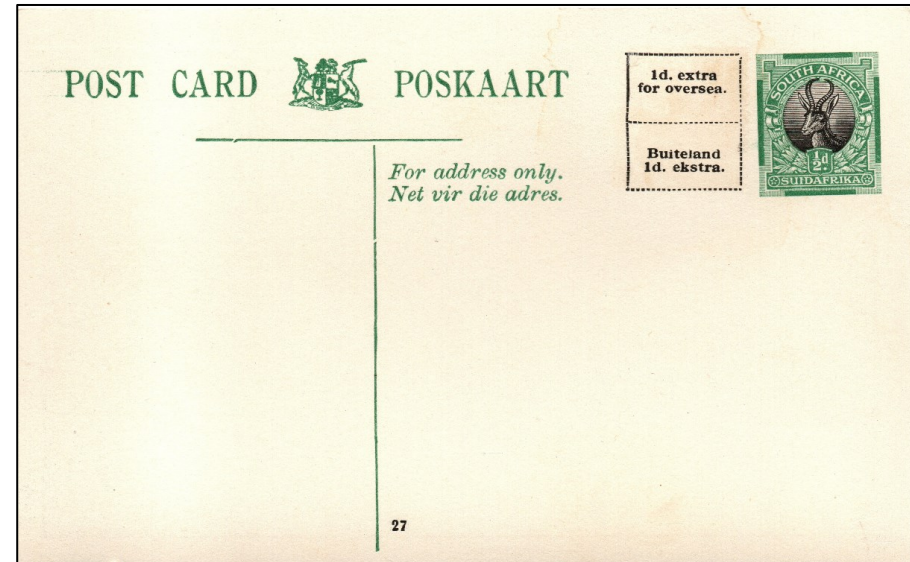
A series of sixteen pictorial postcards produced in 1934.

The Springbok head design, green with centre of stamp in black, with additional space for 1 penny stamp for overseas use. "SOUTH AFRICA" unhyphenated. Arms smaller than in PC 10 and PC11.

Inscription in green, "POST CARD - Arms - POSKAART" - For address only - Net vir die adres.

NOTE: The same pictures were used as for PC 10 and the numbers on the back are in black colour.

NEED POSTCARD USED



ISSUE PC 18 – TYPE 13

An ordinary postcard issued in 1935.

The Springbok head design is in a single colour with solid background to Springboks head.

SOUTH AFRICA in curve at the top and SUID AFRIKA in the bottom, not curved.

NOTE: English inscribed stamp at the top and Afrikaans at the bottom.

The stamps of the post cards from here on in Afrikaans were all hyphenated until the last issue.

Inscribed, "POST CARD - Arms - POSKAART" - For address only - Alleen vir die adres.



POST CARD MINT AND USED

ISSUE PC 18 – TYPE 13
ISSUE PC 18a

An ordinary postcard issued in 1935.

The Springbok head design is in a single colour with solid background to Springboks head.

SUID AFRIKA in curve at the top and SOUTH AFRICA in the bottom, not curved.

NOTE: Afrikaans inscribed stamp at the top and English inscribed at the bottom.



Inscribed, "POSKAART" - Arms - "POST CARD" - Alleen vir die adres - For address only.



ISSUE PC 19 - TYPE 14

An ordinary postcard issued in 1935.

Similar to PC 18/18a but background to Springboks head and the design with horizontal lines within the vignette and in a blue green colour.

SOUTH AFRICA in curve at the top and SUID AFRIKA in the bottom, not curved.

NOTE: English inscribed stamp at the top and Afrikaans at the bottom.



Inscribed "POST CARD - Arms - POSKAART" - For address only - Alleen vir die adres.



PC 19a – MINT - YELLOW GREEN ON CREAM CARD

PC 19b – MINT -YELLOW GREEN ON WHITE CARD

ISSUE PC 20 – TYPE 14

Similar to PC 18/18a but background to Springboks head and the design with horizontal lines with blue green colour. Supplied to Post Offices packed 12 enclosed within a wrapper.

SUID AFRIKA in curve at the top and SOUTH AFRICA in the bottom, not curved.

NOTE: Afrikaans inscribed stamp at the top and English at the bottom.



Inscribed, "POST CARD - Arms - POSKAART" - Alleen vir die adres - For address only.



ISSUE PC 21 – TYPE 15

Another series of 16 picture postcards produced in 1942.

The Springbok head design in a single colour with solid background to Springboks head. Stamp inscribed "SOUTH AFRICA at the top and POSTAGE REVENUE" at the bottom.

NOTE: English inscribed stamp.



Inscribed, Arms - "POST CARD - POSKAART" - For address only - Alleen vir die adres



ISSUE PC 21a – TYPE 15

A series of 11 postcards issued in 1941.

Stamp inscribed "SUID AFRIKA at the top and POSSEEL - INKOMSTE" at the bottom.

Green with inscription and view in green.

NOTE: Afrikaans inscribed stamp.



Inscribed, Arms - "POSKAART - POST CARD" - Alleen vir adres - For address only.

