

A STUDY OF THE "RUN N" VARIETY FLAW Pane 8 # 60

This is one of four major varieties found on Pane 8 and consists of the letter "N" in "ONE" is broken or distorted, creating a "running" appearance, often caused by a cliché damage in the printing plate.

1st State Plate Proof - 21 July 1914 (1st 4 days of issue),



1st State

2nd State 21 July – Oct 1914,



2nd State

3rd State Oct 1914-Dec 1916



3rd State

4th State Dec 1916 - Mar 1927,



4th State

5th State Mar 1927 - Final.



Thick BF, thin N

5th State

Page 2 shows the 1st State on a violet plate proof and a 1d Red single line perf. stamp. The Plate Proof is one of only 3 Plate Proof printings of the Right Plates Panes 7 and 8, compared with 11 Plate Proof printings of the Left Plates Panes 3 and 4. The 2nd State v-notch BRC. Page 3 has the 2nd State on a YOUNG MENS CHRISTIAN ASSOCIATION cover together with a Cooke no monogram strip. Page 4 has multiple copies of the 3rd State. On page 5 is an unlisted variety with certificate. Page 6 has a bisect 1d on cover to make up postage rate. Page 7 has an OS on O.H.H.S. cover showing the 4th State. Page 8 has smooth and rough paper monogram blocks. A violet block of 30 NWPI is on Page 9 and a Harrison imprint strip is on page 10 and a Harrison NO wmk block of 18 is on page 12. A small mult. 14 Mullett block of 10 is on page 13. The 5th state on cover is on page 14 and coil strips normal and inverted wmk are on page 15 finishing with C of A on page 16.

References,

George V ONE PENNY Catalogue by British Society of Australian Philately.
Australian Commonwealth Specialist King George V Catalogue by Brunsden White.
Research by Gordon Monk APR, Bert Wajer APR and Paull Kaigg published in journals Philatelic Society of South Australia, British Society of Australian Philately,
The Commonwealth Collectors Club of New South Wales.

This variety is unusual because when the NEW plates were introduced two separate varieties, that were caused by damage to the plate, occurred within 14 days of commencing stamp production. The Proof Flaw is a small notch inside the right frame at the TRC and was the only flaw for a maximum of 4 days. The first fault in production involved the v-notch in the BRC, Paull Kaigg owned a stamp with the notch inside top RF and the notched BRC dated 22 July 1914. The 3rd state was in the CVT under N of ONE and occurred between 21st and 31st July 1914.

Pane 8 # 60



8-53 0a



8-53 0b

8-53



Mauve Plate Proof



8-60 0a

- 8-53-0 0a Oval. White flaw by Emu's leg.
- 8-53-0 0b Cross top broken.
- 8-59 0a Cross top broken.
- 8-60 0a RF. Small notch inside frame 1mm from top.



1a

1st State Proof - 21 July 1914

- 1a RF. Minute notch on the inside of the frame 1mm below top frame.



Single line perf.

THIS FLAW WITHOUT THE "RUN N" IS ONLY FOUND DURING THE FIRST 4 DAYS OF ISSUE.

17 July 1914 to 21 JULY 1914

Paull Kaigg had a cliché 2nd State cancelled 22 Jul 1914 with split bottom right corner.

EARLY "RUN N"



Single line perf.



Rare comb perf.
Damaged BLC

For 2nd State flaw descriptions and illustrations see the following sheet



Single wmk. comb perf on YOUNG MEN'S CHRISTIAN ASSOCIATION registered cover R No. 390 BRISBANE 25 NOV 1914 posted to BRISBANE left stamp "Corner Dot" 2nd from left "Run N"

letter rate 1d per 1/2oz 1 May 1911 to 28 Oct 1928



Single line perf.
COOKE printing NO monogram

2nd State July 1914 - Oct 1914

1a as before.

- 2a CVT. Variable white flaw under N of ONE.
- 2b BRC. Variable deep v-notch in frame.
- 2c BLC. Compartment dot off corner, vary. & incon.
- 2d LF. Compartment marks down LF, vary. & incon.
- 2e TLC. Compartment dot off corner, vary. & incon.
- 2f TRC. Compartment dot off corner, vary. & incon.
- 2g RF. Compartment marks down RF, vary. & incon.
- 2h Compartment dot off corner, vary. & incon.



2a

2b

Compartment marks are hard to find throughout the flaw life because they appear late in the print run.

2c, d, e

2f, g, h



Single wmk.



Single wmk.
Make Ready Repair



Single wmk.
OS



Single wmk.
2d



Single wmk.
2f

53



54



54

59

60

60

Single wmk.

Single wmk.



3a variations

3rd State Oct 1914 - Dec 1916

1a, 2a to 2h as before.

3a BRC. Right side of v-notch now bent back to bottom frame.
Sometimes seen as white spot or as a slot into the corner

Pane 8 # 60 cont.

"RUN N"



Single line perf.

Late use of perforator

Extremely RARE unlisted variety

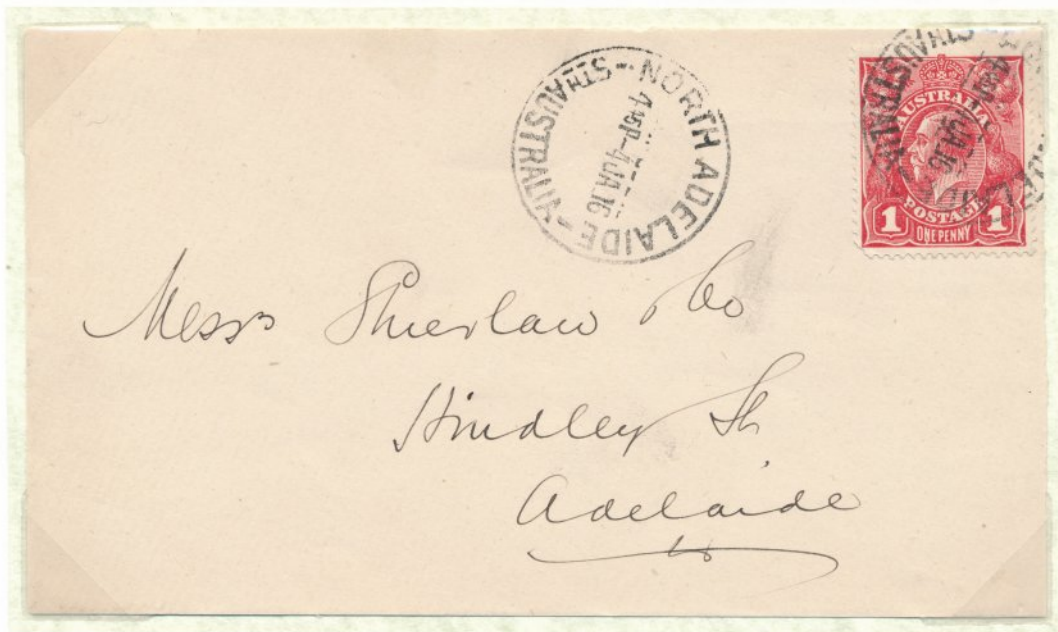
SLP Certificate on back of sheet



59 # 60
Single wmk.



58 # 59 # 60
Single wmk.
Australian Mutual Provident Society Insurance
Brisbane AMP.1 perfin



Single wmk. on front posted NORTH ADELAIDE STH. AUSTRALIA -4 JA 16 to ADELAIDE
letter rate 1d per 1/2oz 1 May 1911 to 28 Oct 1918

3rd State Oct 1914 - Dec 1916

1a, 2a to 2h as before.

3a BRC. Right side of v-notch now bent back to bottom
frame. Sometimes seen as white spot or as a slot into the



3a variations

Pane 8 # 60 cont.

"RUN N"



Single wmk.
2f



Single wmk.
2f

Make ready Repair



Single wmk.
2c, f, g, h



Large mult.
2c, f



Single wmk. bisect on cover posted MELBOURNE -4 OCT 1920 to HEALESVILLE



8-60
Jubilee
panel
2mm gap
8½mm
from top

Diagonal Bisect, ½d war tax abolished and the ½oz letter rate increase from 1½d to 2d on 1 Oct 1920
Late use of bisect, usually found at War Tax introduction 1 Oct 1918 not at letter rate increase on 1 Oct 1920



Single wmk.
F K Cox & Co
Ironmongers & timber
Flemington FK.6
scarce perfin



Single wmk.
Make ready Repair



Large mult.
mint

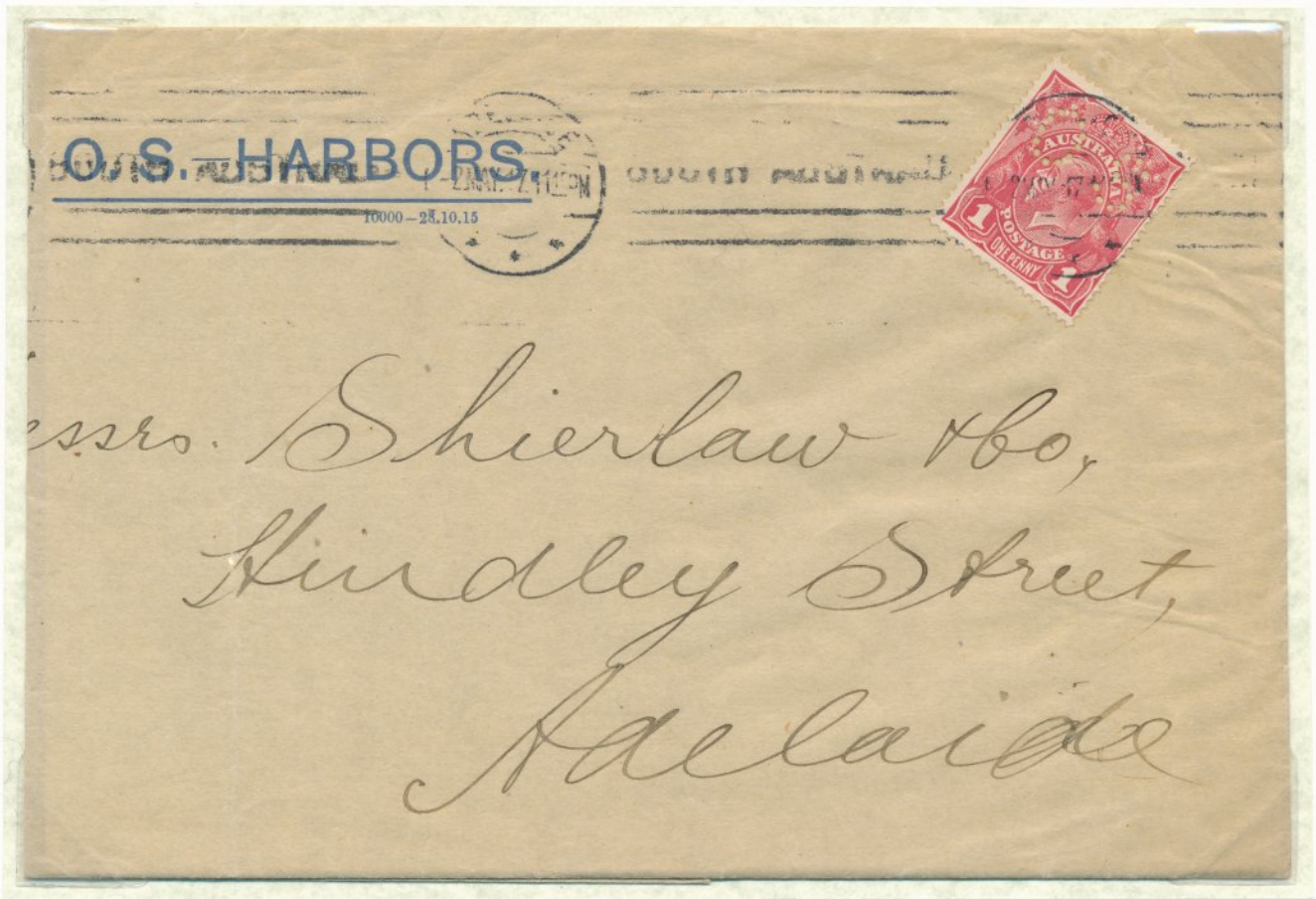


Large mult.

For flaw descriptions and illustrations see the previous sheet

Pane 8-60 cont.

"RUN N"



Single wmk. OS on O. S. HARBORS cover posted ADELAIDE * * * -2 MY 17 to ADELAIDE
letter rate 1d per 1/2oz 1 May 1911 to 28 Oct 1918



48

54

60

Single wmk.



Single wmk.
2c



Single wmk.
Dry ink

4th State Dec 1916 - Mar 1927

1a, 2a to 2h, 3a as before

4a RVS. White spot in BLC of shield.



2a

4a

3a

"RUN N"



Single wmk. smooth paper
COOKE JBC State 2 (10½mm) monogram



Single wmk. rough paper
COOKE JBC State 2 (10½mm) monogram
(Certificate on back)

4th State Dec 1916 - Mar 1927

1a, 2a to 2h, 3a, as before.

4a RVS. White spot in BLC of value shield.



2a

4a

3a

Pane 8 #'s 31 to 60



31
C/L



32
Scratch



#49
C/L



43
C/L



39
Cross



33, 34



40



42
Crown split



42
RVS break



44, 46, 47



49
Flaw over A



31

36

37

42

43

48

49

54

55

60

Single Crown
Complete Forme (largest block issued to Post Offices)

Insufficient space for written descriptions



50
Shade breaks



51
White flaw
in LVS



52
TF notch



54
Corner Dot



55
S/breaks



56
Roo Tongue
Out



60
RUN N

Pane 8 # 60 cont.

"RUN N"



Single wmk.



Single wmk.
Make Ready

55



60

Single wmk.
part Harrison Imprint



Single wmk.
Harris Scarfe & Co
Ironmongers & engineers
Adelaide HS.4 perfin



Single wmk.
A Simpson & Sons
Iron & tinware manufactures
Adelaide AS&S.1 perfin



Single wmk.
Geo Wills & Co Ltd
Merchants & forwarding agents
Fremantle GWF.1 perfin

4th State Dec 1916 - Mar 1927
1a, 2a to 2h, 3a as before
4a RVS. White spot in BLC of shield.



2a

4a

3a

Pane 8 # 60 cont.

"RUN N"



Single wmk.



Single wmk.
Make Ready



Single wmk
OS



59 # 60
Single wmk.
Make Ready
mint



Single wmk.
OS
Make Ready



Single wmk.
Harris Scarfe & Co
Ironmongers & engineers
Adelaide HS.4 perfin



59 # 60
Large mult.
Make Ready
mint

4th State Dec 1916 - Mar 1927

1a, 2a to 2h, 3a as before

4a RVS. White spot in BLC of shield.



2a

4a

3a

Pane 8 # 60 cont.

"RUN N"



NO wmk.



NO wmk.
Make Ready



NO wmk.
James Spicer & Sons
Paper merchants & stationers
Melbourne JS&S.5 uncommon perfin

43



48

49



54

55



60

ON,
AMP PRINTER

NO wmk.
part Harrison imprint
Make ready

4th State Dec 1916 - Mar 1927
1a, 2a to 2h, 3a as before
4a RVS. White spot in BLC of shield.



2a

4a

3a

Pane 8 # 60 cont.

"RUN N"

49

54

55

60



Small mult. 14
part Mullett imprint



Small mult. 14

Small mult. 14 on postcard posted SYDNEY N. S. W. FE 14 1927 to SYDNEY N. S. W.
postcard rate 1d each 1 Oct 1923 to 4 Aug 1930

4th State Dec 1916 - Mar 1927
1a, 2a to 2h, 3a as before
4a RVS. White spot in BLC of shield.



2a

4a

3a

RETOUCH "RUN N"



Small mult. 14
mint



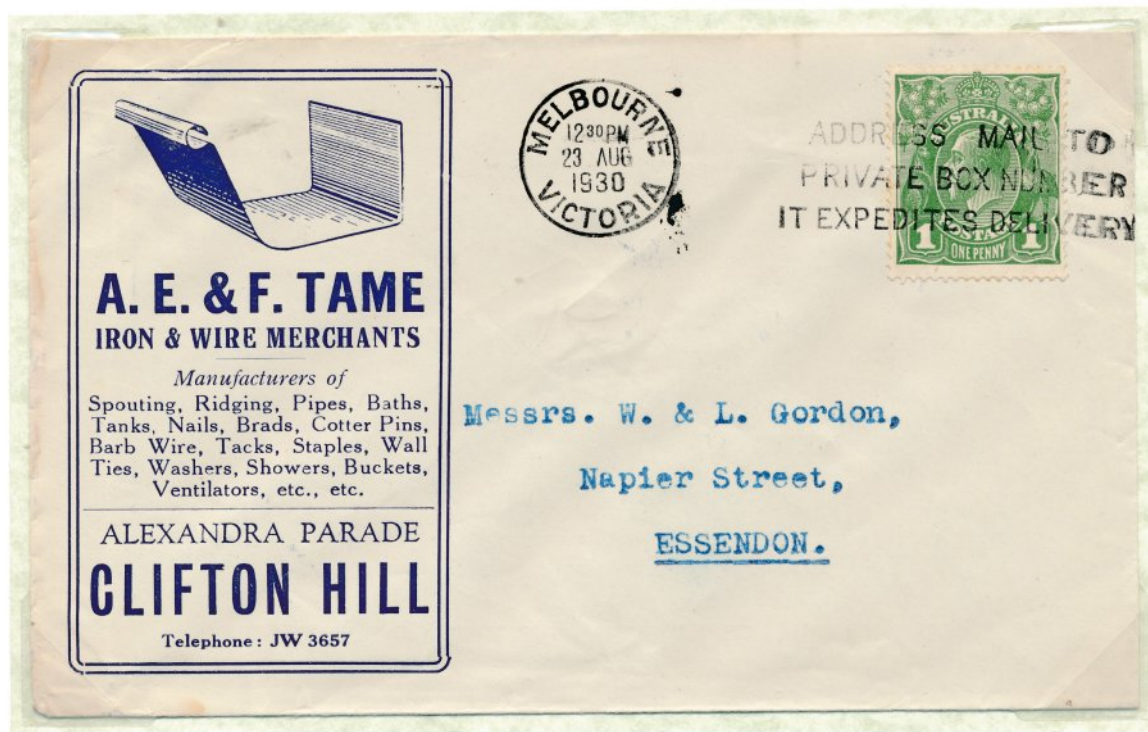
Small mult. 14
Rolfe & Co Ltd
Tea merchants
Melbourne R.1 perfin



Small mult. 14
Paterson, Lang & Bruce
Warehousemen, soft goods &
furnishings
Melbourne PL&B.12 perfin



Small mult. 14



Small mult. 14 on cover posted MELBOURNE VICTORIA. 23 AUG 1930 to ESSENDON
commercial papers rate 1d per 2oz 1 Oct 1923 to 10 Dec 1941

5th State Mar 1927 - Final

1a, 2c to 2h, 3a, 4a as before. 2a, b removed.

5a CVT. Letters ONE thinner particularly the N. Tablet bulges down below these letters thinning the white border, variable.

5b BF. Thickened and bulged up under ONE.



5b 5a

4a

3a



59

60

Small mult. 14
mint

Pane 8 # 60 cont.

RETOUCH to "RUN N"



Small mult. 13½



59 # 60
Small mult 13½



48
54
60
6
mint small mult. perf 13½
coil strip complete with coil join



54
60
6
mint **inverted wmk.** small mult perf.
13½ coil strip complete with coil join



Small mult. perf 13½ #'s 60, left stamp, & 54 on cover posted ADELAIDE STH AUS 17 NO 30 to ADELAIDE letter rate 2d per 1oz 4 Aug 1930 to 10 Dec 1941

For flaw descriptions and illustrations see the previous sheet

Pane 8 # 60 cont.

RETOUCH "RUN N"



C of A
2f



C of A
OS



C of A
G/ NSW



C of A
VG



C of A
VG
2f, g, h



C of A
D J Fowler Ltd
Grocers & wholesalers
Adelaide D&JF.1 perfin



C of A
Thos Brown & Sons Ltd
General merchants
Brisbane TBS.2 perfin



The Controller,
Stores Department,
Commonwealth Bank of Australia,
99-115 Flinders Street,
Sydney, N.S.W.

C of A on postcard posted SYDNEY N. S. W. 1 DEC 1934 to SYDNEY

Commercial papers rate including postcards 1d per 2oz 1 Oct 1923 to 10 Dec 1941

5th State Mar 1927 - Final

1a, 2c to 2h, 3a, 4a as before. 2a, b removed.

5a CVT. Letters ONE thinner particularly the N. Tablet bulges down below these letters thinning the white border, variable.



5b 5a

4a

3a