

# ARCH OF THE GUATEMALA POST OFFICE PALACE

Engraving from the Engraving Office of the National Printing Office, Guatemala City, printed on thick or thin paper without watermark. Frame design: Celeste de Espada; center design: Francisco Gutiérrez. Engraving: Froilán Ceballos Cuevas. The designs (excluding the printing) measure 25 x 29 mm. It was the first postage stamp, engraved and printed in the newly created "STEEL ENGRAVING WORKSHOP" of the National Printing Office.

This "Construction Stamp" paid the mandatory postage fee intended to finance the new "Palace of Post and Telegraphs" to replace the old post office building destroyed by the earthquakes of 1917 and 1918. First printing with printer's imprint, authorized by decree of June 3, 1942, 500,000 units printed, second printing without printer's imprint, authorized by decree of July 18, 1942, 4,500,000 units printed.

## CONTENT

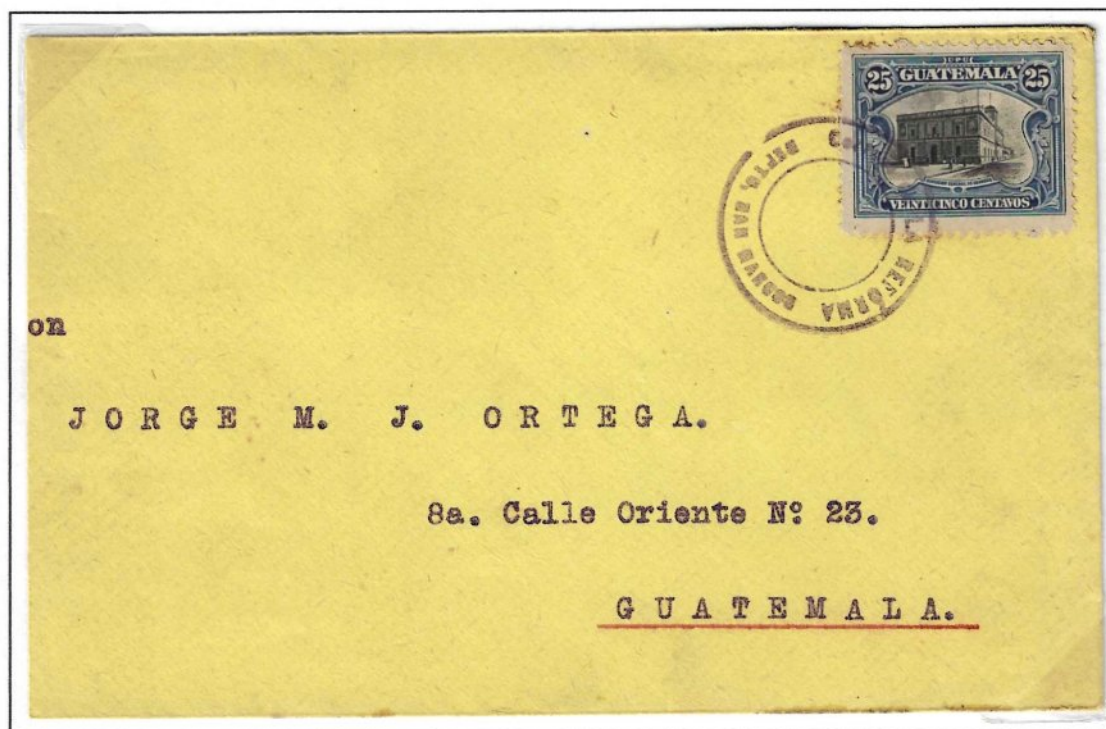
1.- Old Post Office building, 1911 stamp	Page 2
2.- Original photograph by Adrien Boutrelle that served as the basis for the design	Page 3
3.- Photo adaptation test for final artwork design	Page 4
4.- Final stamp design artwork	Page 5
5.- Die proofs of the center and frame of the postage stamp	Page 6
6.- Die proofs of the complete artwork in various colors	Page 7
7.- Postage stamp with printers information " <b>TIPOGRAFÍA NACIONAL TALLER DE GRABADOS EN ACERO, GUATEMALA, C.A.</b> "	Pages 8-10
8.- New Year's card from the "Director General of the Post Office".	Page 11
9.- Stamp without imprint	Pages 12-16

### References:

THE POSTAGE STAMPS AND POSTAL STATIONERY OF GUATEMALA handbook by THE INTERNATIONAL SOCIETY OF GUATEMALA COLLECTORS Michael I. Bloom Version 2.0 September 2024.

## 1.- OLD POST OFFICE BUILDING

The Guatemala City Post Office building in the early 1900s stood on the site of the Chapel of the Third Order of Saint Francis, which was destroyed by the earthquakes of 1917-1918, and was part of the large San Francisco Monastery complex.



*Domestic mail, La Reforma San Marcos – Guatemala City*

2. ORIGINAL PHOTOGRAPH BY ADRIEN BOUTRELLE THAT SERVED AS THE BASIS FOR THE DESIGN



### 3.- PHOTO ADAPTATION TEST FOR FINAL ARTWORK DESIGN



*Test of adapting the initial photo to achieve the final artwork design of the postage stamp.*

#### 4. FINAL STAMP DESIGN ARTWORK



*Final design of the stamp.*

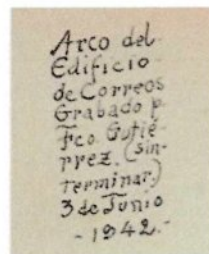


*Die proof in sepia color.*

## 5.- DIE PROOFS OF THE CENTER AND FRAME OF THE POSTAGE STAMP



Die proof of the artist's Drawing of the center of the stamp in reddish pink color, with a legend written on the back by the artist.



Translation of the artist's words by hand on the reverse:

**"Arch of the Post Office Building, Engraving by Francisco Gutierrez. (unfinished.) June 3, 1942."**



Die proofs of the stamp frame in red-orange and blue colors.

## 6.- DIE PROOFS OF THE COMPLETE ARTWORK IN VARIOUS COLORS



Die proof of the Artist's Drawing.  
Engraving information across the entire width at the bottom. On the reverse, the engraver Francisco Gutierrez's autograph.

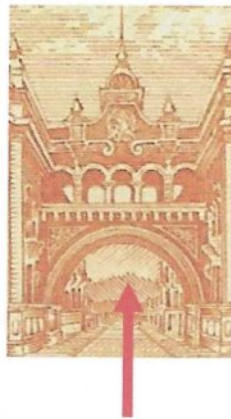
*Francisco Gutierrez*  
3 June 1942



Die proof in orange without shadows under the arch.



Die proof in light brown.



Die proof in orange with shadows under the arch.



## 7.- POSTAGE STAMP WITH PRINTER'S INFORMATION

**"TIPOGRAFÍA NACIONAL TALLER DE GRABADOS EN ACERO, GUATEMALA, C.A."**



In the June 3, 1942, issue, the standard stamp height is 33 mm. and the standard width is 29 mm. This design features printing at the bottom, and 500,000 units were issued. A wide range of perforations can be found.



Print runs upwards.



Perforation defect, discontinuity of the same is observed.



Perforation 11.8



Perforation 11.8, high 35 mm.



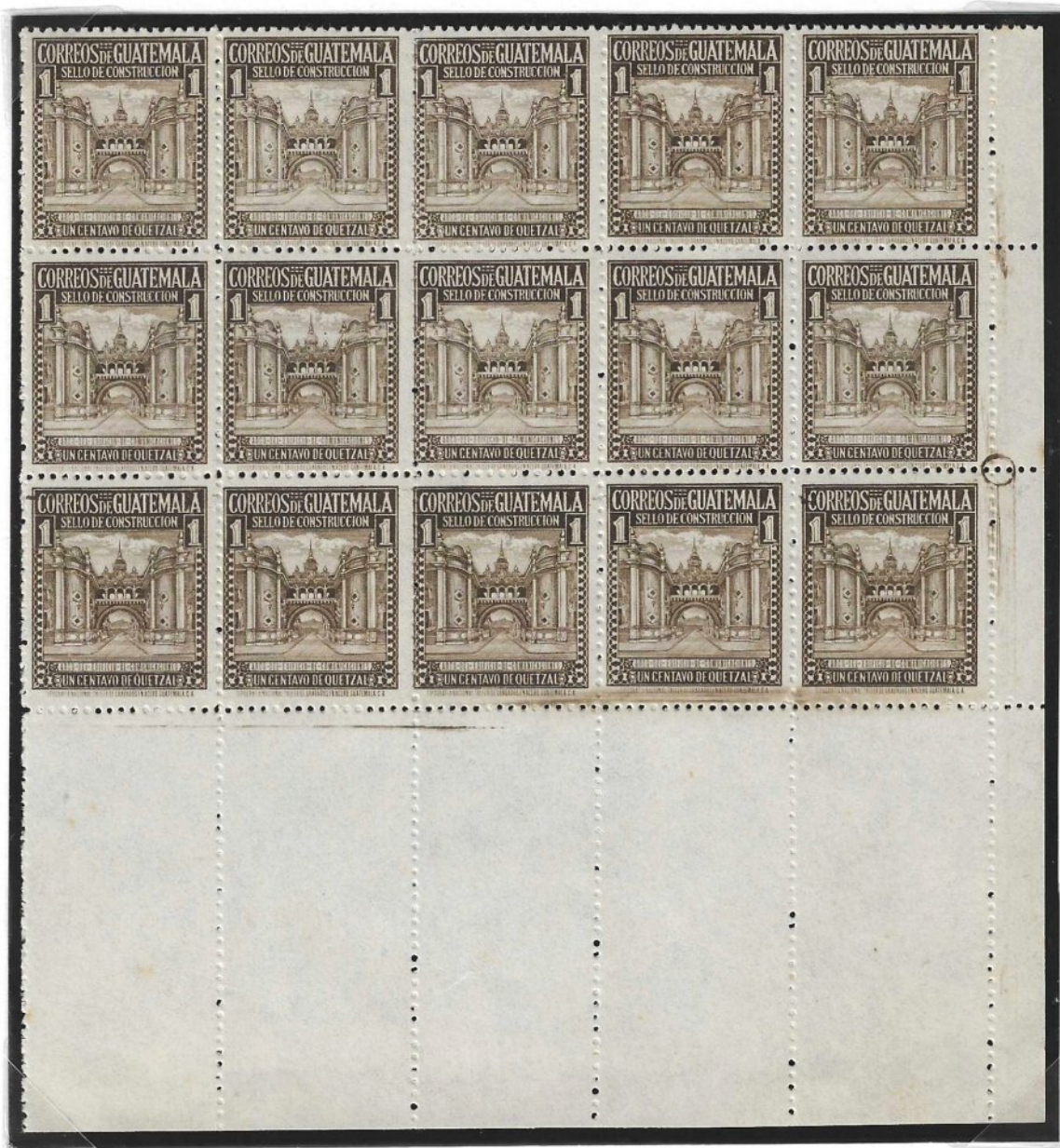
Perforation 11.8 irregular.



Perforation 11.1 x 11.8

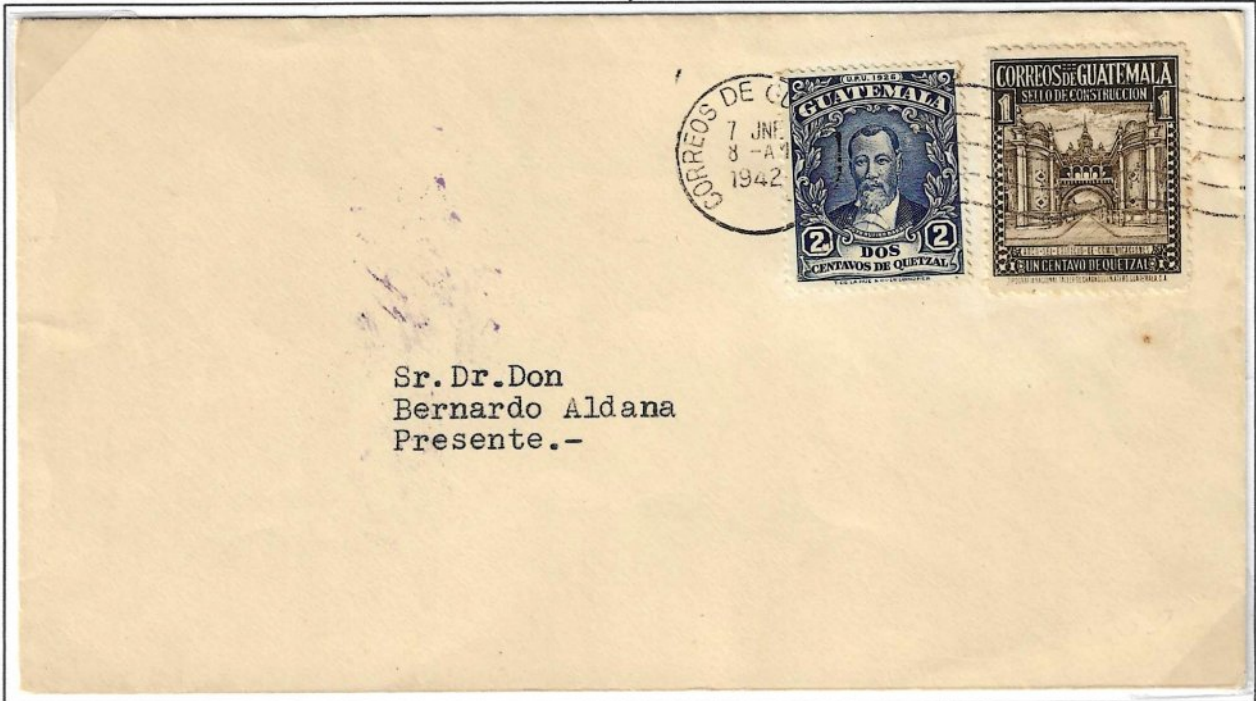


Perforation 11.8 x 11.1

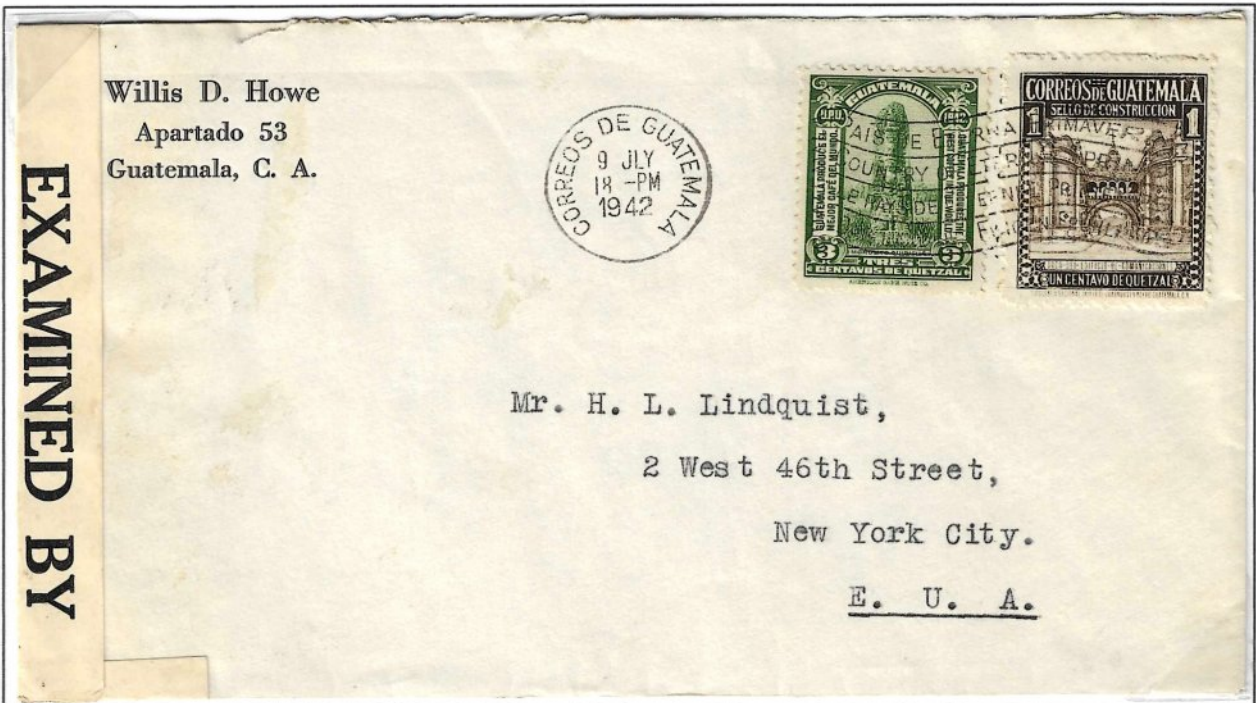


*Block of 15, lower right corner of the sheet, the lower margin can be seen, the dimensions are larger than the lateral ones.*

Local service, Guatemala City, June 7th, 1942.



Local service, Guatemala City, June 7th, 1942.



International service, Guatemala City - New York, USA, July 9th, 1942. Notice of opening and reviewed by the Censor.

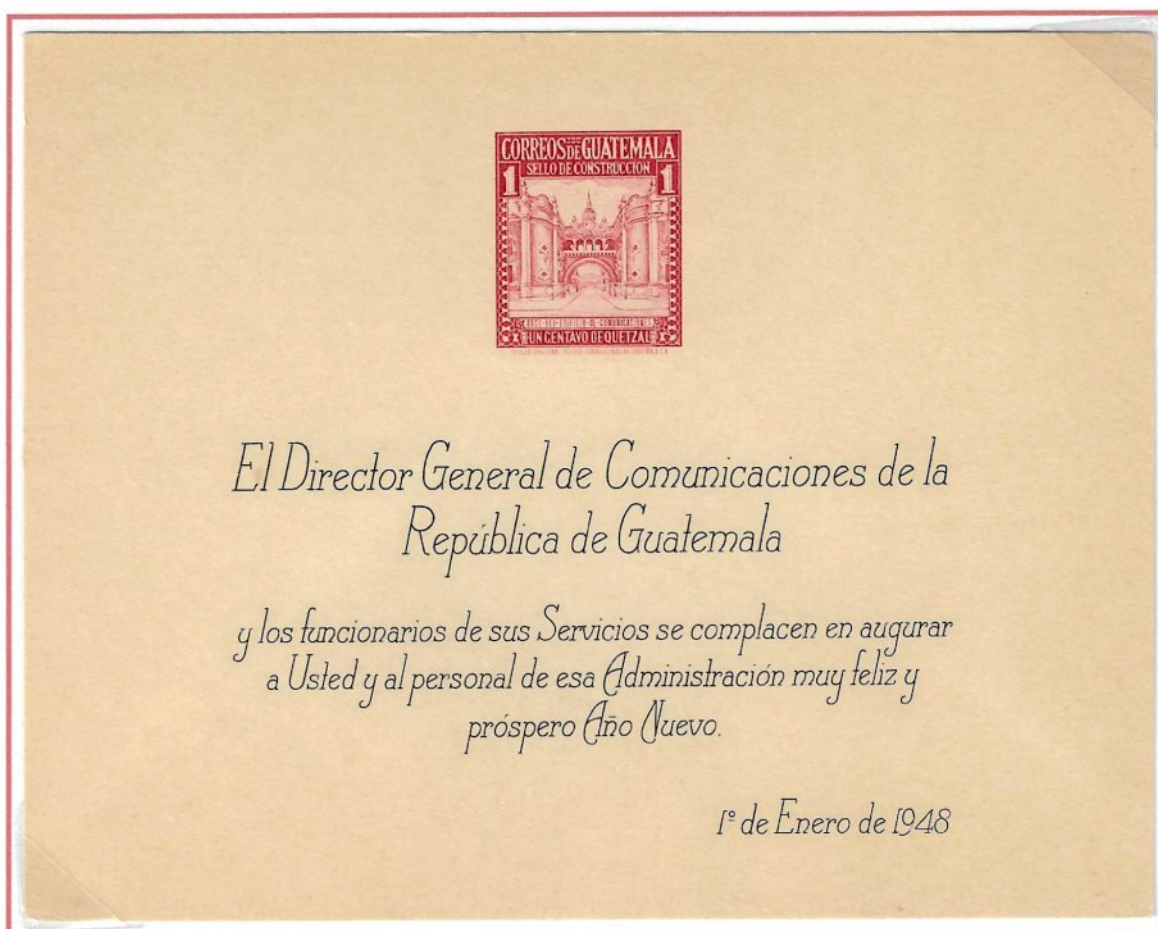
## 8.- NEW YEAR'S CARD FROM THE "DIRECTOR GENERAL OF THE POST OFFICE"

The 1c with imprint reproduced in carmine rose on a New Year's card from the postal chief to other government officials. Inscription on card translates as follows:

### **"The Director General of Postal and Telecommunications of the Republic of Guatemala**

**functionaries of his Services are pleased to wish to you and to the  
personnel of your Administration a very happy and prosperous New  
Year.**

**"1st of January, 1948"**



## 9.- POSTAGE STAMP WITHOUT PRINTER'S FONT



**Big length 35 mm.**



**Normal length 33 mm.**



**Short length 31 mm.**



**Perforation 10.8;**  
**Dark, thick paper.**



**Perforation 10.8; tono**  
**Clear, thin paper.**



**Perforation 11.1;**  
**Irregular, thin paper.**



**Perforation 10.8**



**Perforation 11.1 x 11.8**



**Perforation 10.8 x 11.8**



**Perforation 11.8 x 10.8**



**Perforation 11.8 x 11.1**

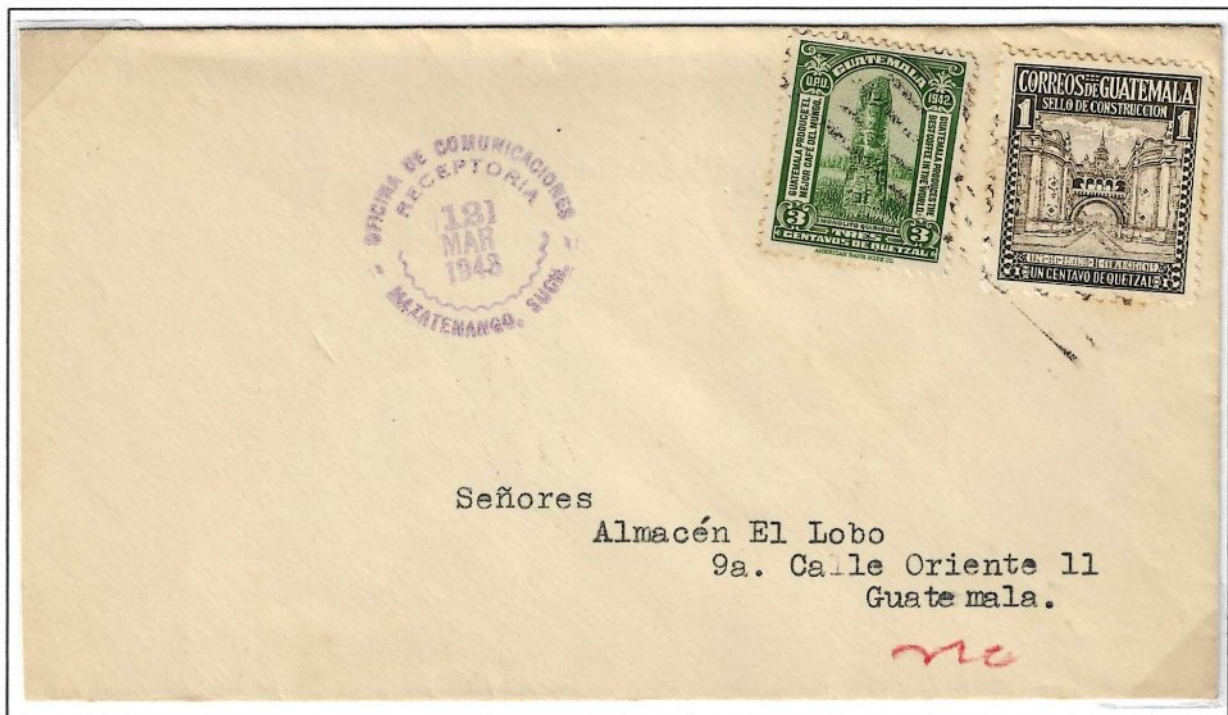


**Extended mast.**

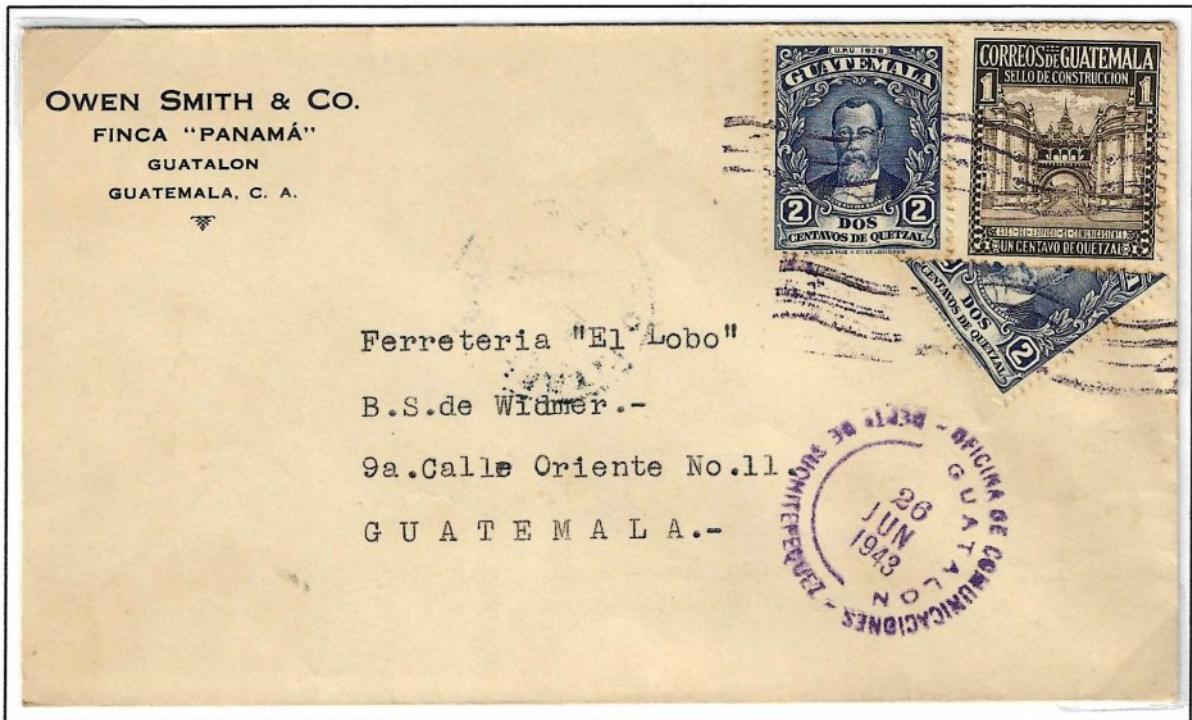




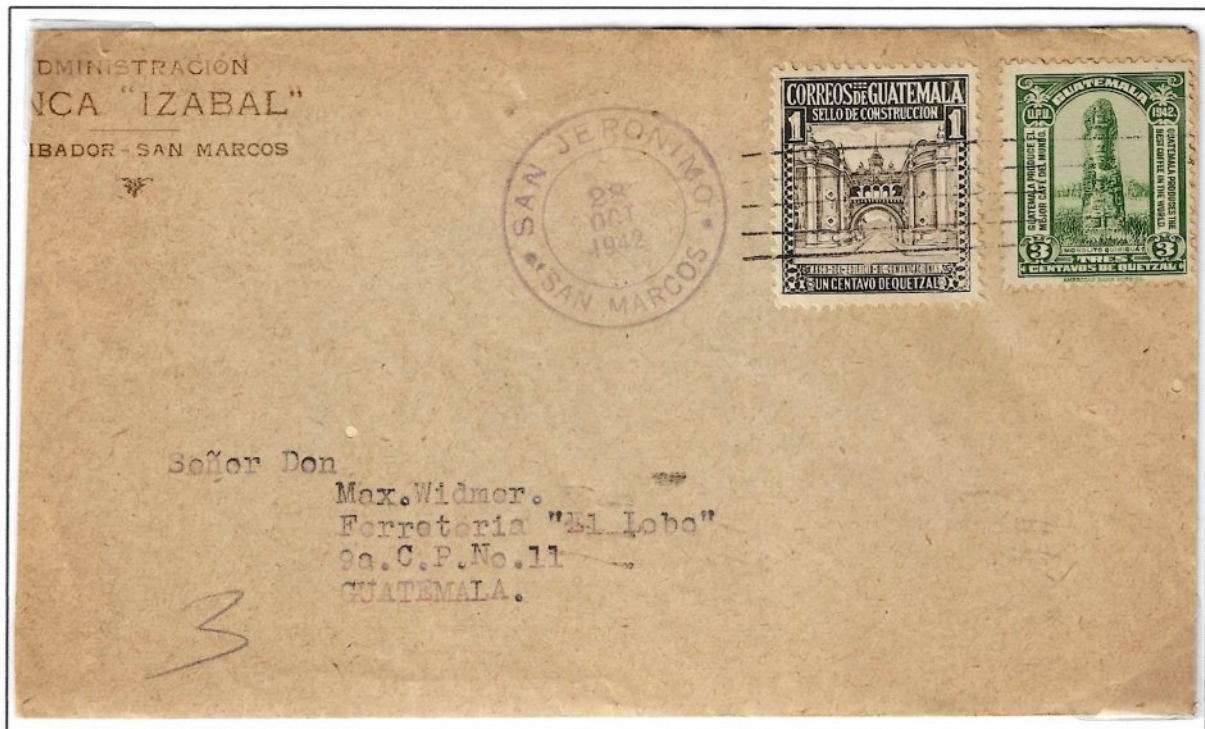
In the July 1942 issue, the standard stamp height is 33 mm, and the standard width is 29 mm. Unlike the June 1942 issue, the perforations in the July 1942 issue are less irregular or poorly made.



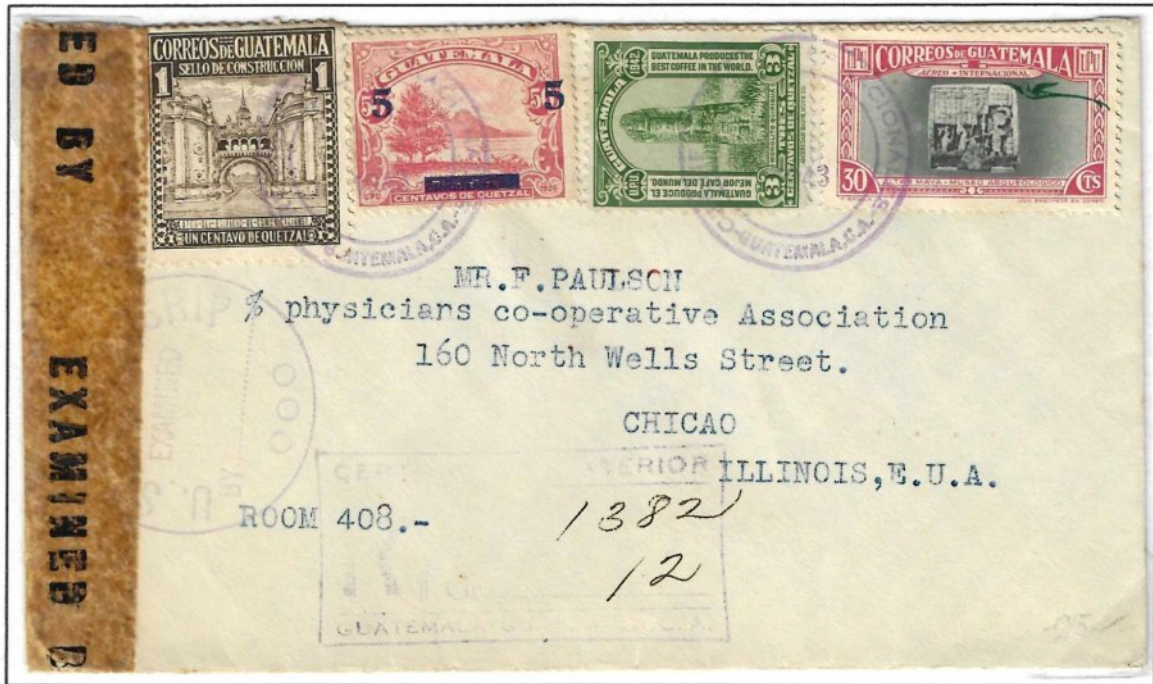
Domestic mail, Mazatenango, Suchitepequez -  
Guatemala City, March 12th, 1943..



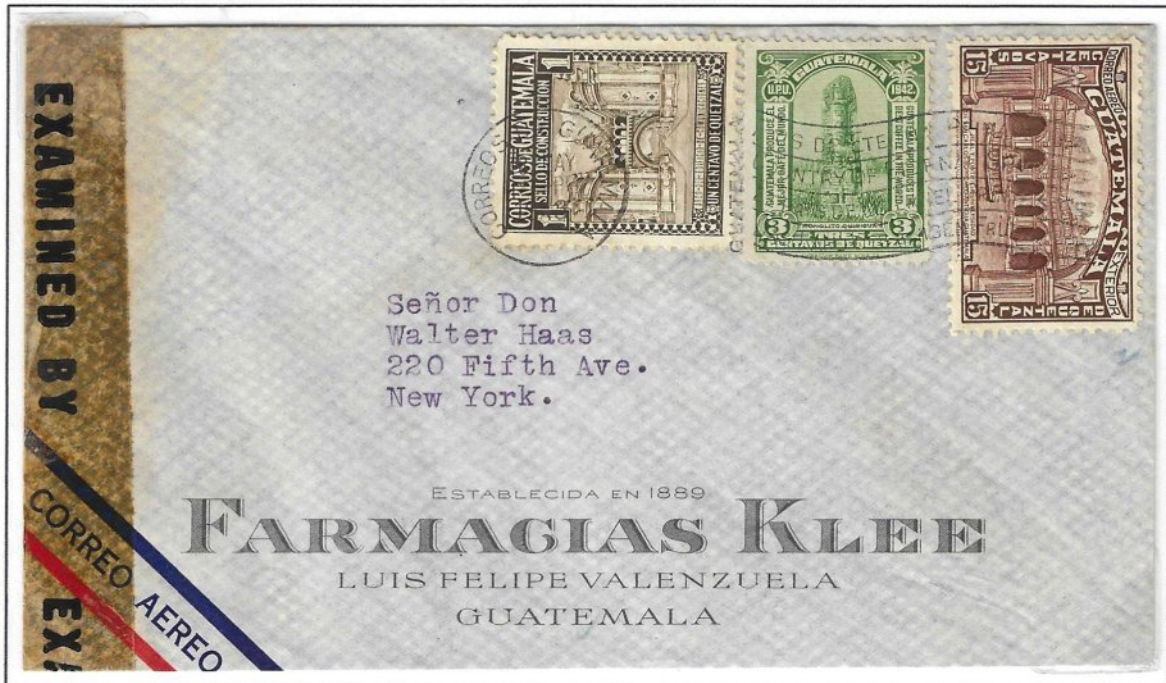
Domestic mail, Mazatenango, Suchitepequez -  
Guatemala City, March 12th, 1943.



Domestic mail, Mazatenango, Suchitepequez -  
Guatemala City, March 12th, 1943..



Certified international mail, Guatemala City – New York, USA, February, 1943. Notice of opening and reviewed by the Censor.



International mail, Guatemala City – New York, USA, May 18th, 1943. Notice of opening and reviewed by the Censor.



International mail, Guatemala City – New York, USA, September 3rd, 1942. Notice of opening and reviewed by the Censor.



International mail, Guatemala City – New York, USA, May 6th, 1943. Notice of opening and reviewed by the Censor.