

Belt & Buckle Symbols in Philately, Postal History & Ephemera

Exhibit Purpose & Scope

The exhibit aims to demonstrate the extent to which the Belt and Buckle symbol was used throughout the 19th and early 20th centuries in Canada & other countries to denote trust with organizations and commercial enterprises. The scope of the exhibit is representative of the usage in philately, postal history & ephemera.

Importance

Symbols in culture, religion, society, commerce & other life areas have long held power to influence the populace. Studying symbols of the past is important to recognize current & new symbols & be conscious of their effects. This exhibit is the only known examination of the ubiquitous Belt & Buckle symbol.

Rarity & Difficulty of Acquisition

Generally, Belt & Buckle examples are not rare, however exhibit material has been chosen to the largest extent possible to show a wide range of symbol use & examples of philatelic or historical significance. Such items are shown with red border.

Research, Knowledge & Personal Study

Each item was selected as best representative example & researched for additional philatelic & historical impact.

Montreal Telegraph Company



March 13, 1865, per telegram

Telegraph message from New York "I am inst. going on board, Good bye, Harry". Henry (Harry) Rust Mighels was a Union soldier from Norway Maine. Message indicated that Harry was boarding a Union soldier train or ship at New York. Harry was wounded in action. He & telegraph recipient Nellie Verrill married in 1866, moved to Nevada where Harry was editor & publisher of Carson City, Nevada's, Nevada Appeal. After Harry's death in 1879, Nellie continued to publish the paper until their son Henry J. Mighels Jr. took over as editor of the Appeal in 1898.

Exhibit Chapters

- | | | |
|------------------------|---------------------------------|----------------------|
| 1. Order of the Garter | 5. Post Cards | 10. Ephemera |
| 2. Postage Stamps | 6. Hand Stamp Symbols on Covers | 11. Stationery |
| 3. Revenue Stamps | 7. Printed Symbols on Covers | 12. Advertising Mail |
| 4. Post Marks | 8. Royal Warrants | 13. Epilogue |
| | 9. Cachets | |

1. Belt & Buckle Symbol

Order of the Garter

The Belt & Buckle symbol originates from the Order of the Garter founded in 1348 by Edward III & limited to 24 individuals including the Sovereign & the Prince of Wales.

Widespread use of Belt & Buckle symbol was originally as a mourning symbol. Belt & Buckle rings were worn to symbolize the strong connection with a departed spouse or family member. In the 19th century the symbol was commercialized to represent strong commercial, trust, quality, societal and community bonds. Many commercial and societal organizations used the Belt & Buckle symbol as part of their emblems.

H.R.H. Albert Edward Prince of Wales

Letter from H.R.H. Albert Edward Prince of Wales & Order of the Garter member while travelling in Italy to prominent physician and writer Dr. George Vivian Poore. Envelop back flap has the Order of the Garter Belt & Buckle symbol & motto "Honi Soit Qui Mal Y Pense" (*shamed be the person who thinks evil of it*)



H.R.H. Prince Albert Edward stationery with Order of the Garter symbol on the back flap



Enlarged scan of backflap symbol



Enlarged A.E. initials L.L. Corner



March 9, 1872 - Reduced scan of front.

2. Postage Stamps

India – Scinde Dawk

Prior to 1851 the postal system in the Indian province of Sindh consisted of runners paid by distance. Sir Bartle Frere of the East India Company became commissioner of Sindh in 1850 & undertook postal system reform using horses & camels over established routes with uniform rates. The initial Scinde Dawk stamp was a red sealing wax wafer, soon replaced by white paper stamp with an embossed circular Belt & Buckle design. Scinde Dawk stamps were in use July 1852 to Oct 1854 when they were replaced by the first general issue lithographed stamps of India.

Scinde is the anglicized Sindh and Dawk is an anglicized version of the Hindu word Dak meaning Post or Mail.



Embossed
½ Anna
Scinde Dawk
Pen cancelled

Ionian Islands

Belt & Buckle was used as the vignette frame for three stamps issued in 1859 for Ionian Islands, a British Protectorate. Stamps remained in use until Ionian Islands were ceded to Greece in 1864.



1/2p Orange



1p Blue



2p Lake

Set ex. Trimble

All values were printed from one plate with values identified by colour. Examples shown are each from position 96 as identified by a re-entry at left side of first letter "I"

2. Postage Stamps

Heligoland

Heligoland is a small archipelago in the North Sea. From 1807 to 1890 Heligoland was a British possession. Since 1890 it has been part of Germany. The Heligoland series of 1875 featured a left-facing medallion vignette of Queen Victoria with Belt and Buckle Vignette frame and with dual British pence and German pfennig denominations.



1 Farthing / 1 Pfennig



2 Farthings / 2 Pfennig



3 Farthings/5 Pfennig Post Card – Posted Aug 20, 1877

Newfoundland

The only postage stamp issued by Canada or its provinces with Belt & Buckle design was the twelve cents value of the Newfoundland 1865 series. The unique design by the American Bank Note Company featured left-facing medallion vignette of Queen Victoria with oval Belt & Buckle framing encasing the words Newfoundland & Twelve Cents. No outer framing was included.



American Bank Note Company New York
Plate Proof



Brown



Red Brown

2. Postage Stamps

St. John's College, Oxford

Between 1871 & 1884 colleges at Oxford University issued stamps for members to pay messengers to deliver mail. In 1884 messenger system was determined to contravene GPO monopoly & system ceased.



Half sheet of 1884 St. John's College, Oxford 1/2 penny stamps with belt & buckle design.

3. Revenue Stamps

Canada 2nd & 3rd Issue Bill Stamps

The \$1, \$2 and \$3 values of Canada 2nd & 3rd Issue Bill Stamps had a circular belt around a left-facing medallion vignette with buckles on the sides.



\$1 - 2nd Issue, Red
with green centre



\$1- 2nd Issue, Green
with red centre

Series of 1864 Manufactured Tobacco Stamps

Manufactured Tobacco excise duty was effective June 1, 1864 in the Province of Canada. Different stock taking labels with Letters "M" and "D" were used to identify stocks manufactured before and after June 1, 1864 respectively. Stock with "M" labels were duty exempt and stock with "D" labels were dutiable.



Imperforate 1864 "D" Dutiable
Manufactured Tobacco stock label

3. Revenue Stamps

1907 Saskatchewan Law Stamps

Belt & Buckle surrounds Provincial Crest on 1907 Saskatchewan Law Stamps



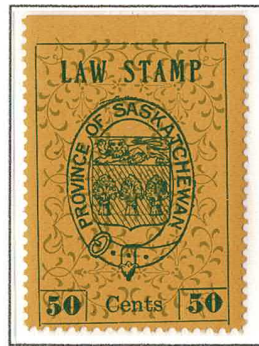
5 Cents



10 Cents



25 Cents



50 Cents



75 Cents



1 Dollar



2 Dollars



3 Dollars

4. Post Marks

Australian State - Victoria

Victoria **Post and Telegraph Office** cancellations used in over 100 offices, 1880 to mid 1890's had words "Post and Telegraph Office" in a horizontal oval belt with town name & date in 3 lines in the inner oval. Cancels were generally about 27mm h x 38mm with one or two holes in the belt left of the buckle.

E.T. - No. 1. **POST OFFICE TELEGRAPHS.** No. _____

No. Words 6 This despatch has been received for delivery, subject to the Regulations and Conditions under which Telegraphic Messages are authorized to be transmitted in Victoria.

Check _____


By B **NO FEES TO BE PAID UNLESS STAMPED HEREON.**

Time rec^d 12.49 From Hamilton Rly. Dated _____


Telegram for Mayor of Richmond
Richmond

All complaints to be addressed in writing to the Postmaster-General.

| | | | |
|--------|----------|---------|----------|
| 1 | 2 | 3 | 4 |
| Please | excuse | absence | business |
| 5 | 6 | 7 | |
| at | Hamilton | | |
| 9 | 10 | 11 | |
| 13 | 14 | 15 | |
| 17 | 18 | 19 | |
| 21 | 22 | 23 | |
| 25 | 26 | 27 | |
| 29 | 30 | 31 | |



South Melbourne
Oc 1, 1888



Carlton, 1892

** No pecuniary liability is incurred by the Crown by reason of any delay, default, or any Telegraphic Message sent or received, or omitted to be sent or received.

(Signature) B. J. Bloomfield

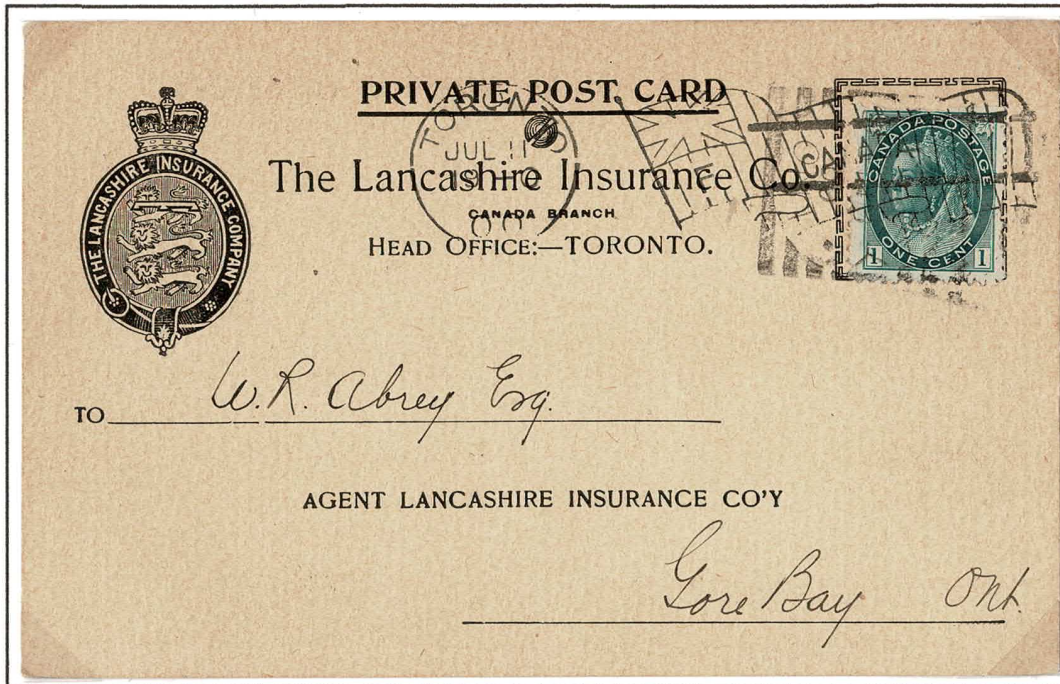
Time lodged at the Sending Station } 12.20

Telegraph Richmond Victoria, Receiving Cancel, Jy 15, 1897

5. B&B Symbols on Postcards

Lancashire Insurance Co.

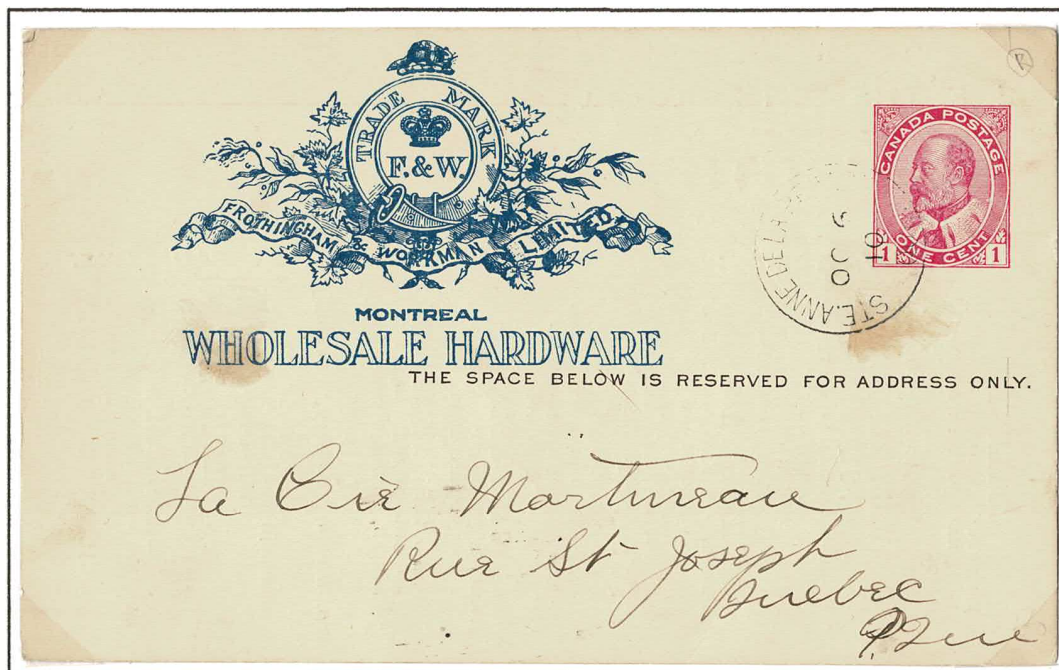
Post card with Lancashire Insurance Company's Belt & Buckle symbol used to acknowledge receipt of payment.



Toronto, Ont., Jul 11, 1900

Frothingham & Workman

Postal stationery post card with Frothingham & Workman Limited's Belt & Buckle symbol, advising when a salesman will call.



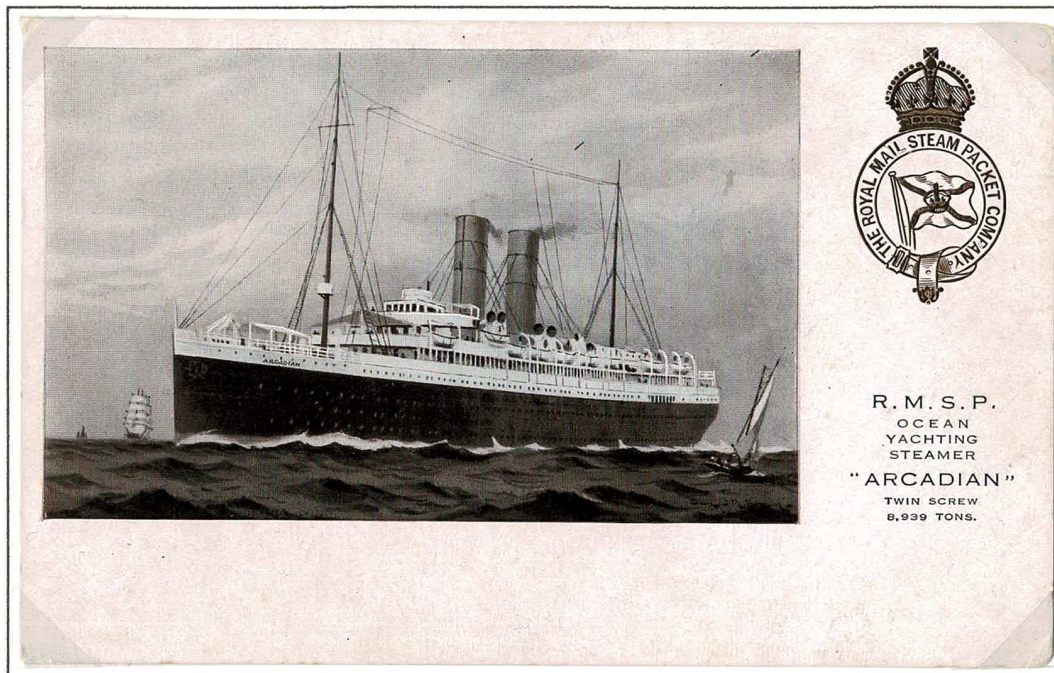
St Anne De La Pérade, Que. Oct. 6, 1910

5. B&B Symbols on Postcards

Royal Mail Steam Packet Co.

The Royal Mail Steam Packet Company used the Belt & Buckle symbol as part of their company emblem

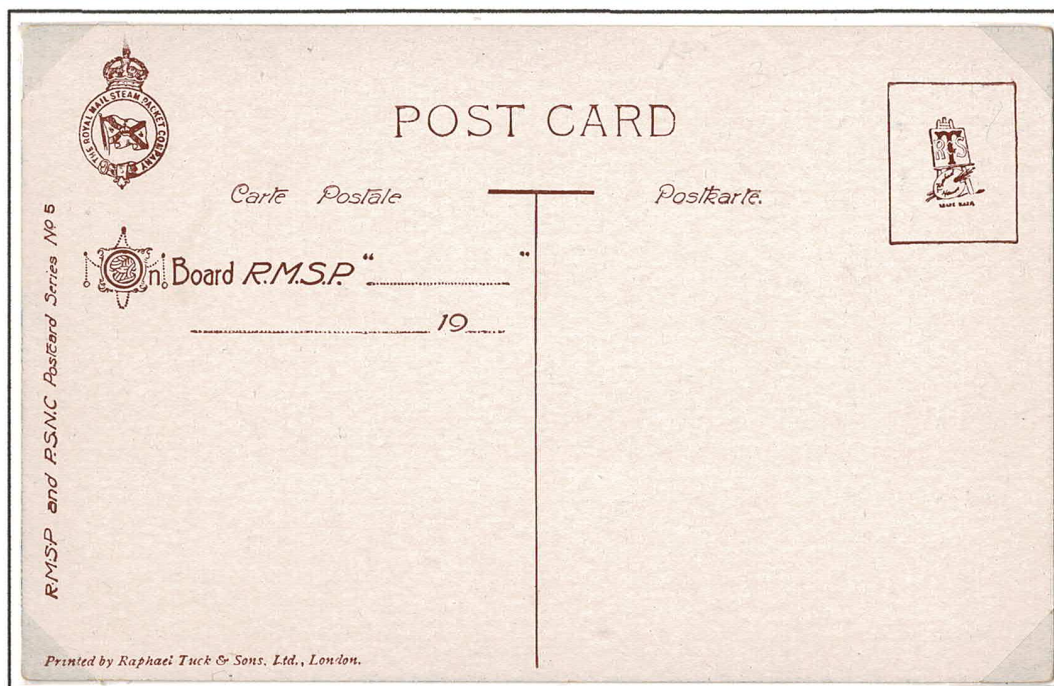
R.M.S.P. Arcadian



Chartered by the Admiralty in 1915, the Arcadian was sunk on Apr. 15, 1917, by submarine UC-74 with 279 lives lost.

On Board Post Cards

R.M.S.P. on board post cards for use by passengers were printed by Raphael Tuck & Sons, London and featured images of different port of call on the front.



Bahia Caes Das Amarras, Brazil, colour image on front.

5. B&B Symbols on Postcards

Organizations

48th Highlanders & Essex Fusiliers

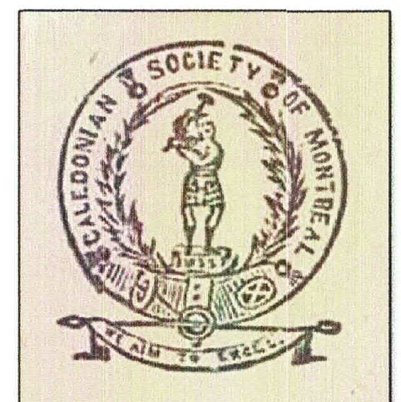
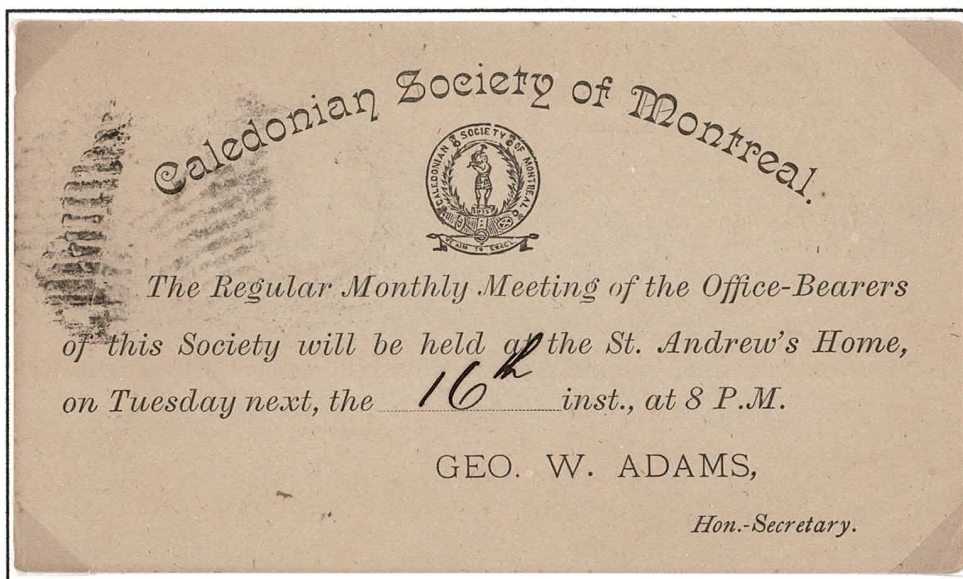
A 48th Highlanders & the Essex Fusiliers joint post card featured both regiment B&B symbols, an armouries hall and a bagpiper.



Windsor, Ont. Dec 4, 1905

Caledonian Society of Montreal

The Caledonian Society of Montreal founded in 1856 was the organizer of the Caledonian Games which later became the Montreal Highland Games. The society incorporated the Belt & Buckle in their emblem, seen below on a meeting notice printed on the back of a postal stationery card.



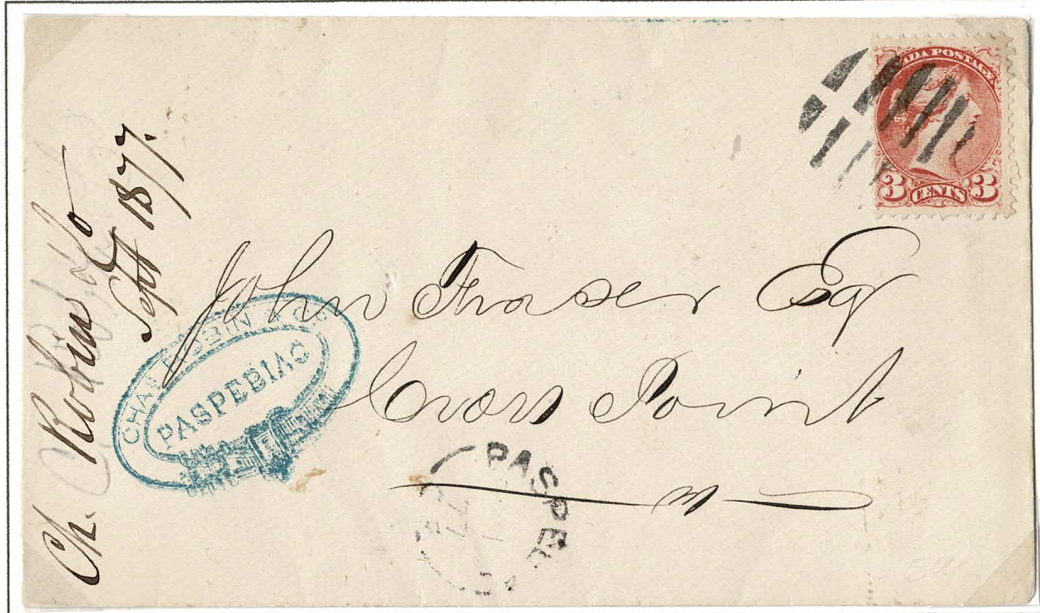
Enlarged emblem

Montreal, Que. Feb. 16

6. Hand Stamped B&B Symbols

Chas. Robin & Co. Paspébiac

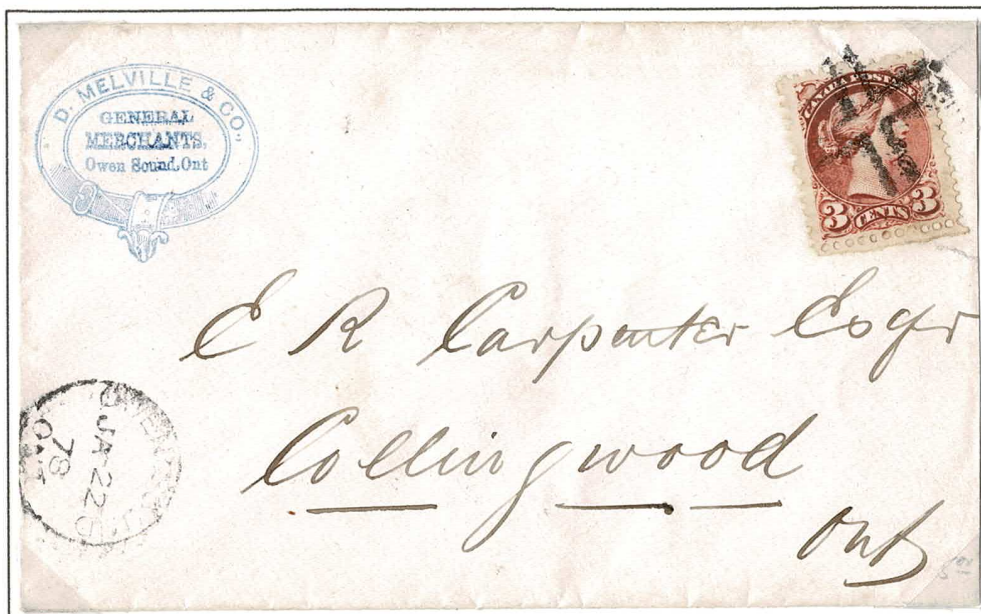
Charles Robin came from the Isle of Jersey in 1802 & established a fish trade with his homeland from a location in Gaspé on the shore of Chaleur Bay, eventually named Paspébiac, Que.



Paspébiac C.E. Sep 1, 1877

D. Meville & Co. General Merchants, Owen Sound Ont.

A 1894 one dollar, D. Melville & Co. Owen Sound, merchant script note held by Bank of Canada Museum describes the company business as importers of staple & fancy dry goods, carpets, mantles & silks &c and dealers in ready-made clothing hats, & caps, wall papers, boots & shoes, groceries & crockery &c.



Owen Sound, Ont., Jan. 22, 1878

6. Hand Stamped B&B Symbols

Hutchings & Co. Co. St. John N.B.

Hutchings & co. were manufacturers of spring beds and bedding in St. John N.B.



St. John N.B. Feb 20, 1902

L.N. Rail, General Merchant, Grand Pabos, Que.

Located on the Grand Pabos River in the Gaspé region of Quebec, L.N. Rail was a general merchant and Fish and Lumber dealer. The Grand Pabos River is known as a prime salmon fishing river.



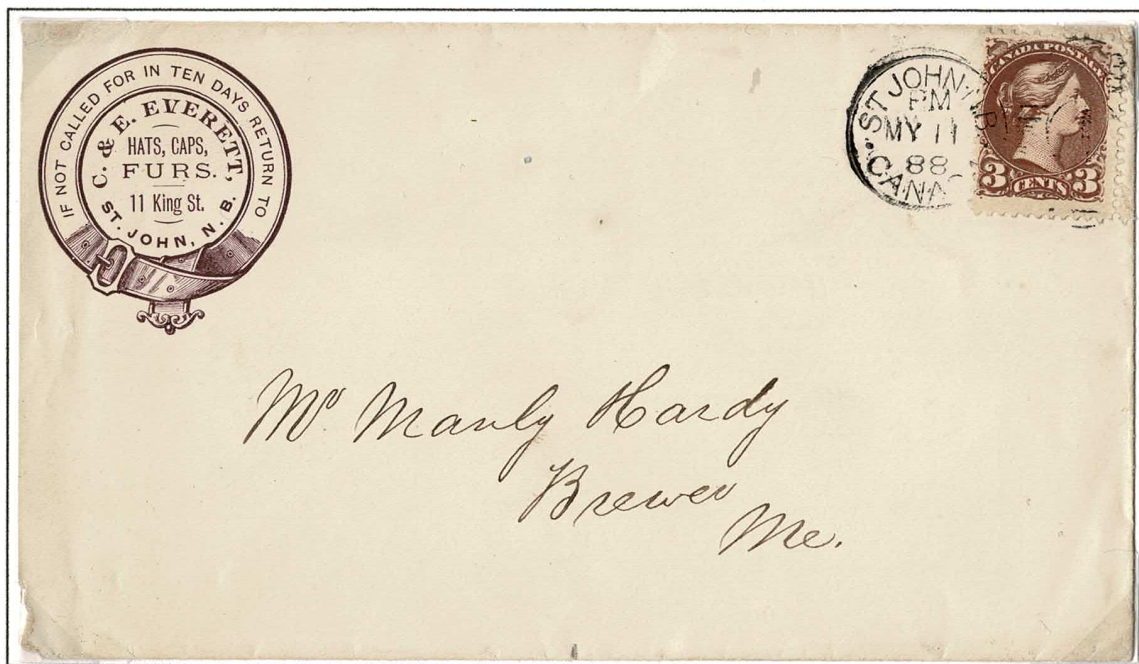
Grand Pabos, Que., Aug. 19, 1904

7. Printed Corner Card Symbols

Circular B&B Symbols

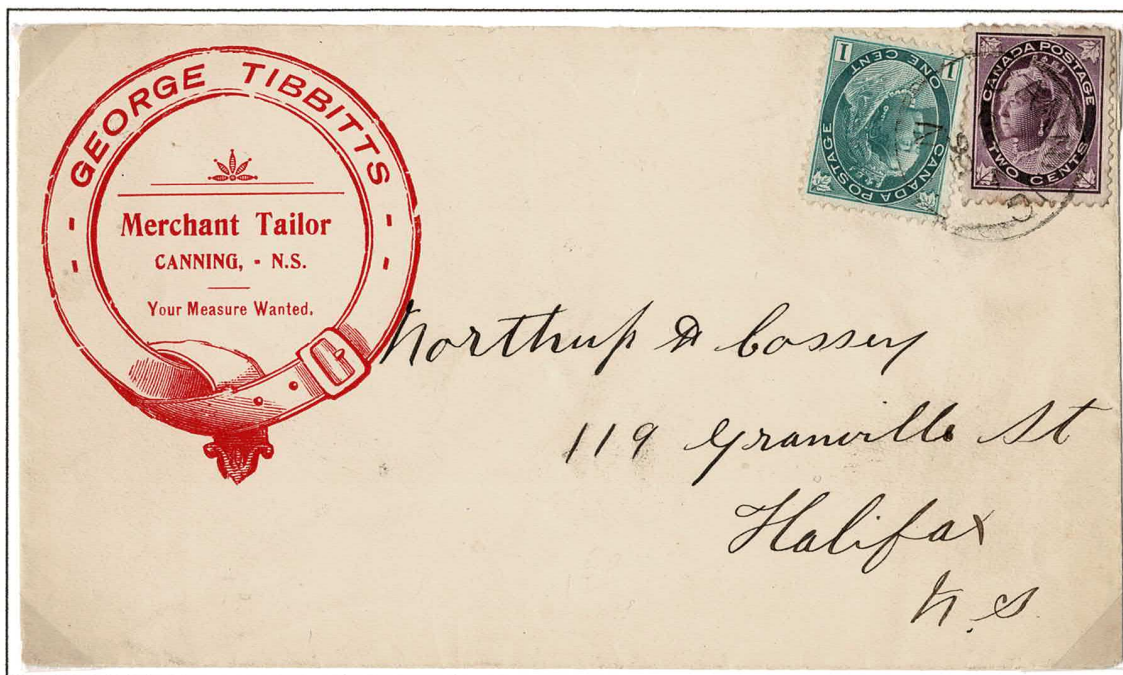
Belt & Buckle symbols were frequently used by businesses in the maritime provinces. Circular symbols were less frequently used than oval types but exist in most eras.

C. & E. Everett, St. John N.B.



St. John N.B., May 11, 1887

George Tibbitts, Canning N.S.



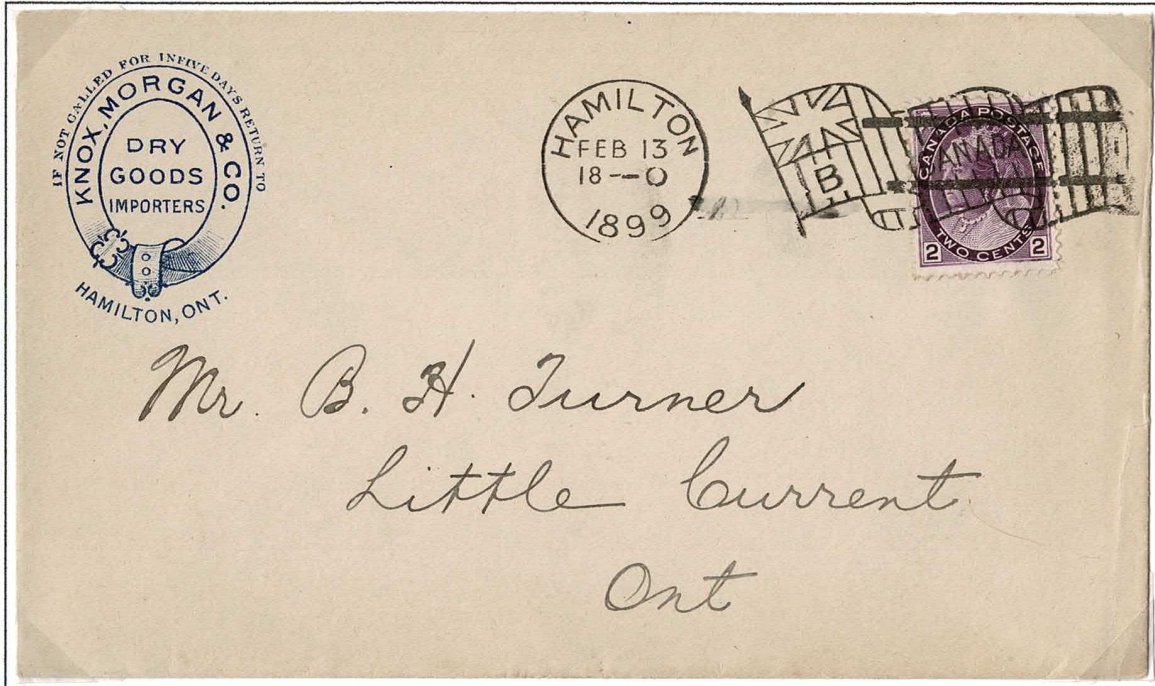
Canning N.S. Oct 4, 1898

7. Printed Corner Card Symbols

Vertical Oval B&B Symbols

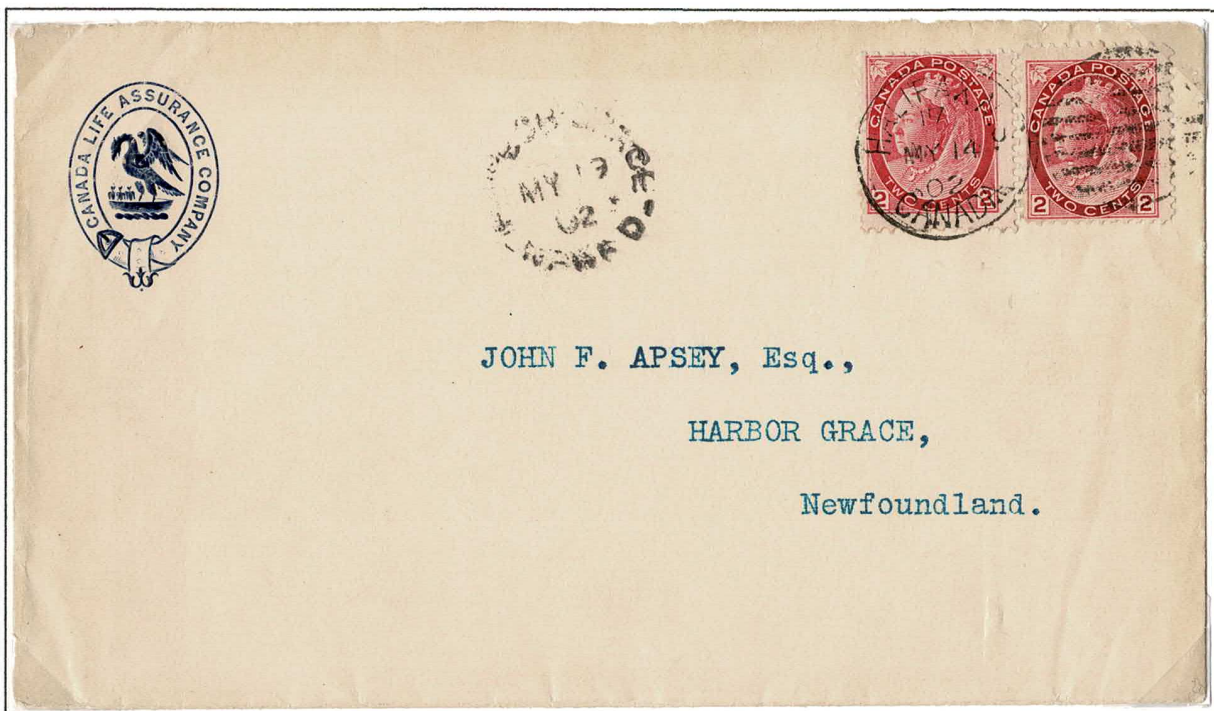
Vertical Oval Belt & Buckle symbols were generally less frequently used than horizontal ovals. Canada Life Assurance Company was a major user of the vertical oval design.

Knox, Morgan & Co., Hamilton, Ont.



Hamilton, Ont., Feb 13. 1899

Canada Life Assurance Company



Halifax May 14, 1902 - Double Weight IPP rate for 1 oz. letter to Harbour Grace Nfld.

7. Printed Corner Card Symbols

Horizontal Oval B&B Symbols

Horizontal Oval Belt & Buckle symbols were the most frequently used design.

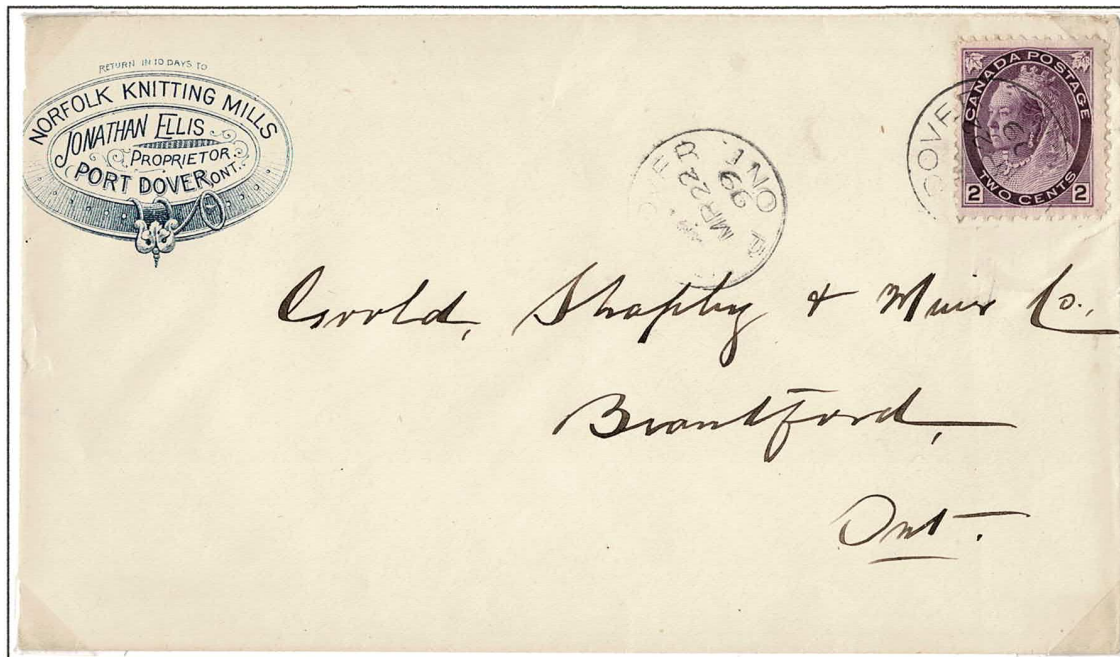
W.H. Thorne & Co. St. John, N.B.



St. John N.B. Jun 15, 1898

Norfolk Knitting Mills, Port Dover Ont.

"Jonathon Ellis, Proprietor" is a prominent feature in the Norfolk Knitting Mills Belt & Buckle to build trust with customers. This is akin to modern-day company presidents being the company spokesperson on commercials.



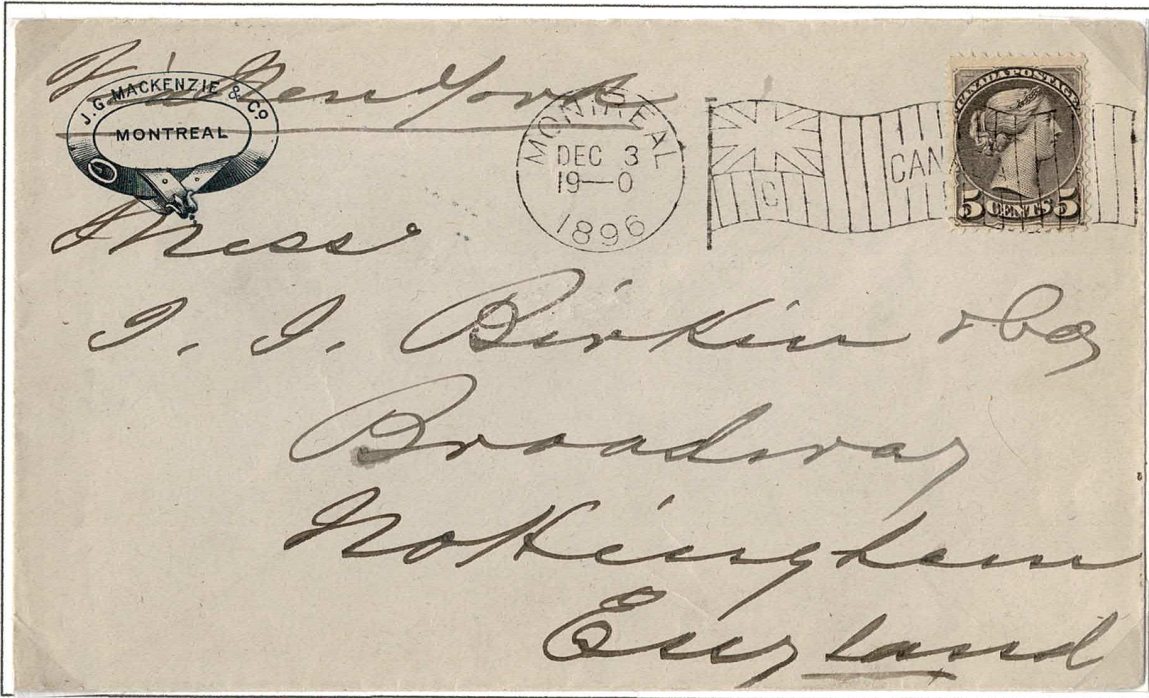
Port Dover, Ont. Mar 22, 1899

7. Printed Corner Card Symbols

Horizontal Oval B&B Symbols

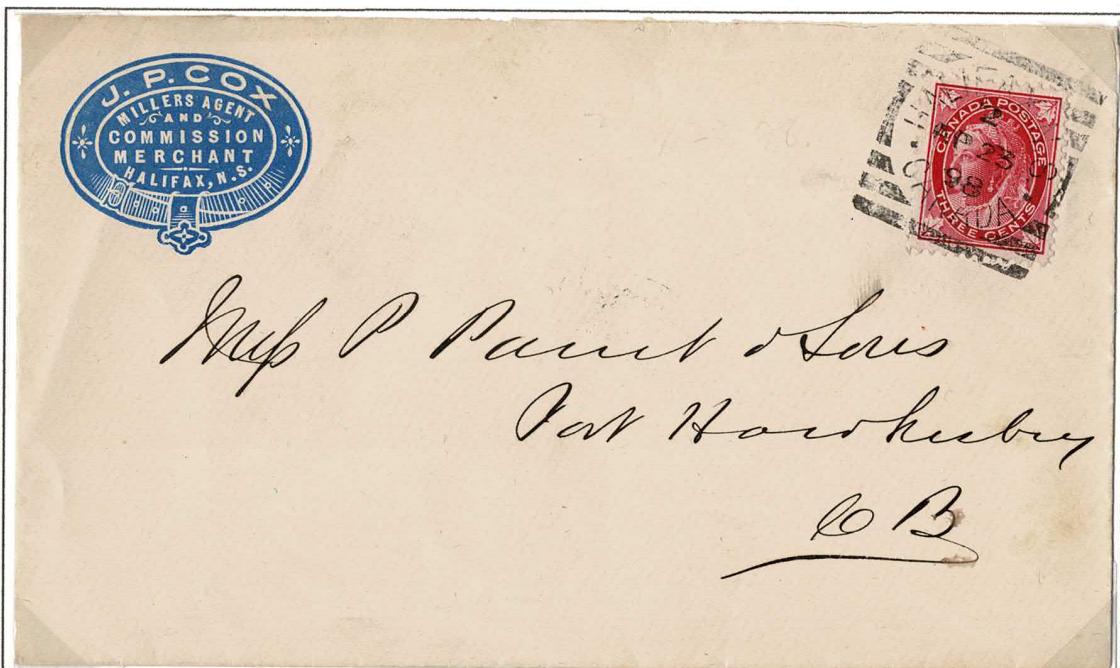
J.G Mackenzie & Co., Montreal

John Gordon Mackenzie came from Scotland in 1811 at the age of 16 & worked with merchant firms in Montreal. In 1829, he married Seraphina, daughter of Horatio Gates, President of the Bank of Montreal. In the same year, he established the wholesale dry goods house of J.G. Mackenzie & Co.



Montreal, Dec 3, 1896

J.P. Cox, Halifax N.S. Millers Agent & Commission Merchant



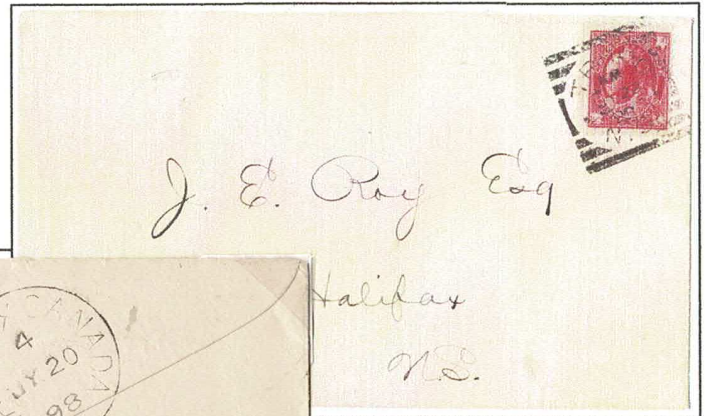
Halifax Ap 23, 1898

7. Printed Back Flap Symbols

Legal Profession

Back flap designs were more discrete & often used by banks, legal & other professions. They were also widely used by wholesalers & other business to business entities.

H. Alman Lovett, Solicitor, Truro N.S.



Reduced scan of face



Truro Jul 20, 1898



Reduced scan of face

Court of Queens Bench, Montreal



Montreal Oct 27, 1877

7. Printed Back Flaps Symbols

Banking

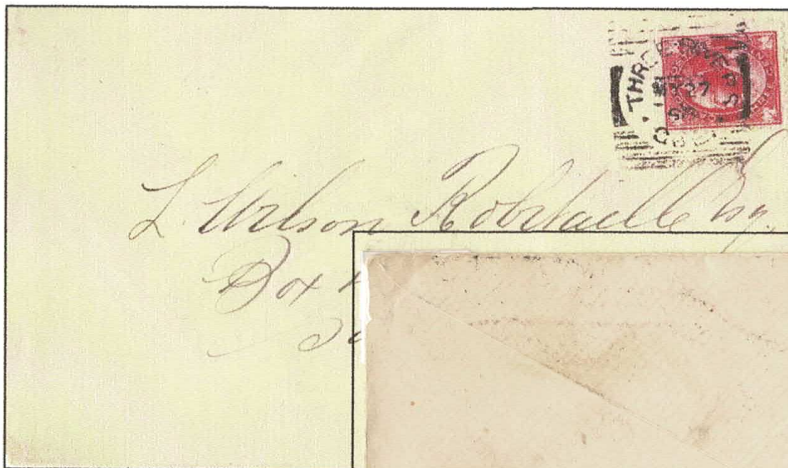
**James C Mackintosh Halifax
N.S. Banker and Broker**



Reduced scan of face



Halifax Ap 25, 1902



Reduced scan of face

**Quebec Bank
Three Rivers**

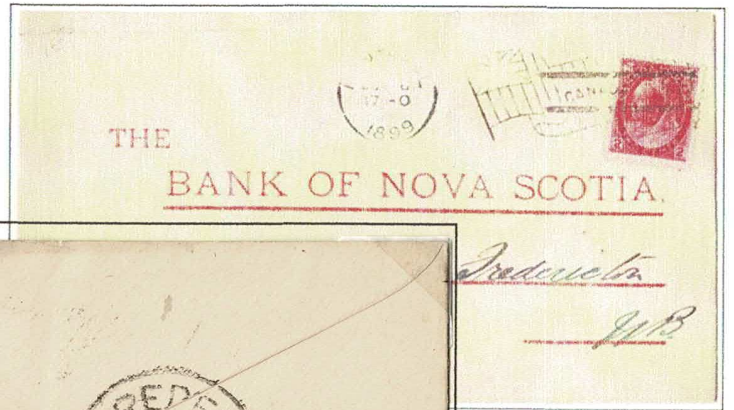
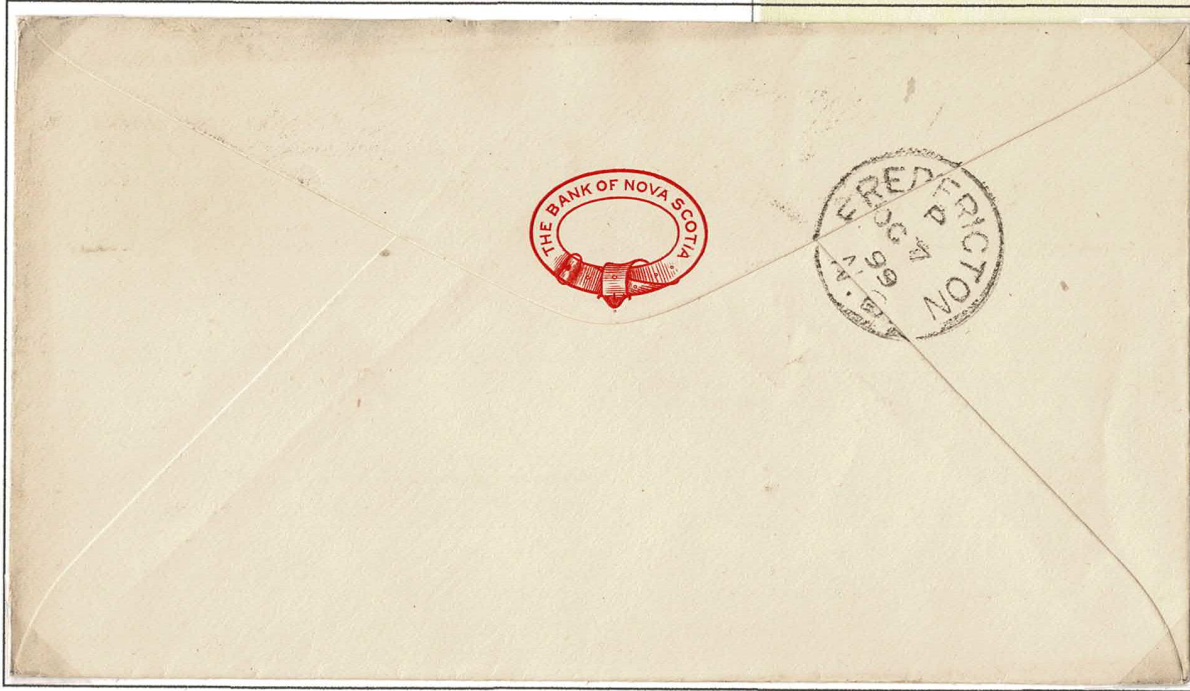


Three Rivers,
May 27, 1898

7. Printed Back Flaps Symbols

Bank of Nova Scotia used the Belt & Buckle symbol even on its interoffice envelopes

Bank of Nova Scotia

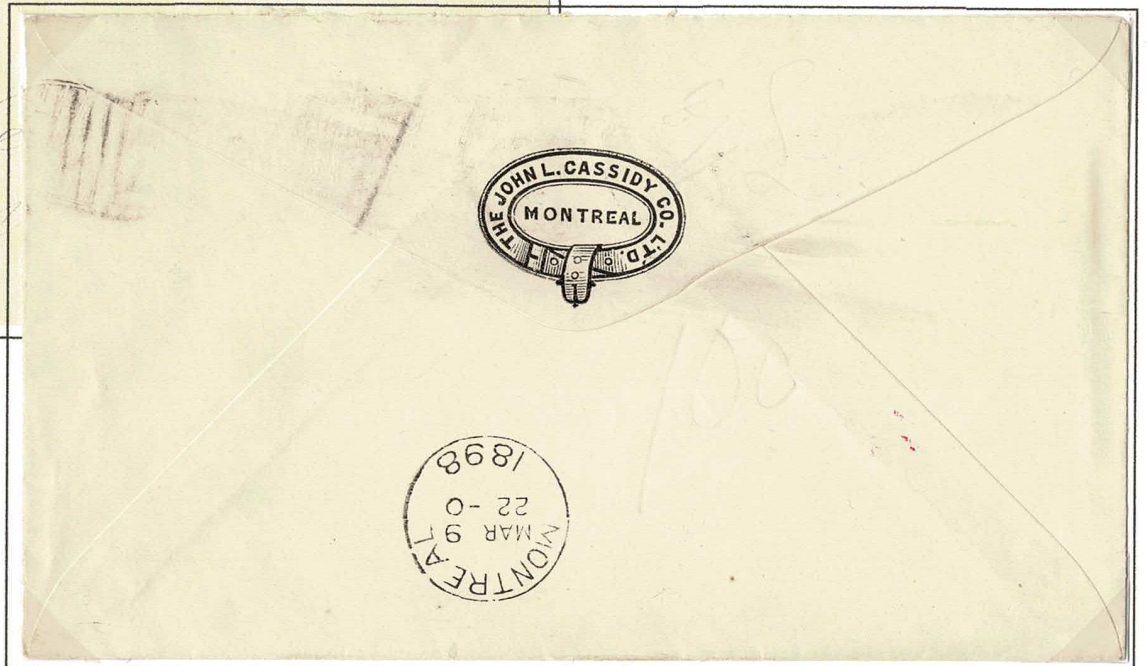


Montreal
Oct 6, 1898



The John L. Cassidy Co.

Importer of glassware, fine china & silverware since 1865.



Montreal
Mar 9, 1898

8. Royal Warrants

Photographers

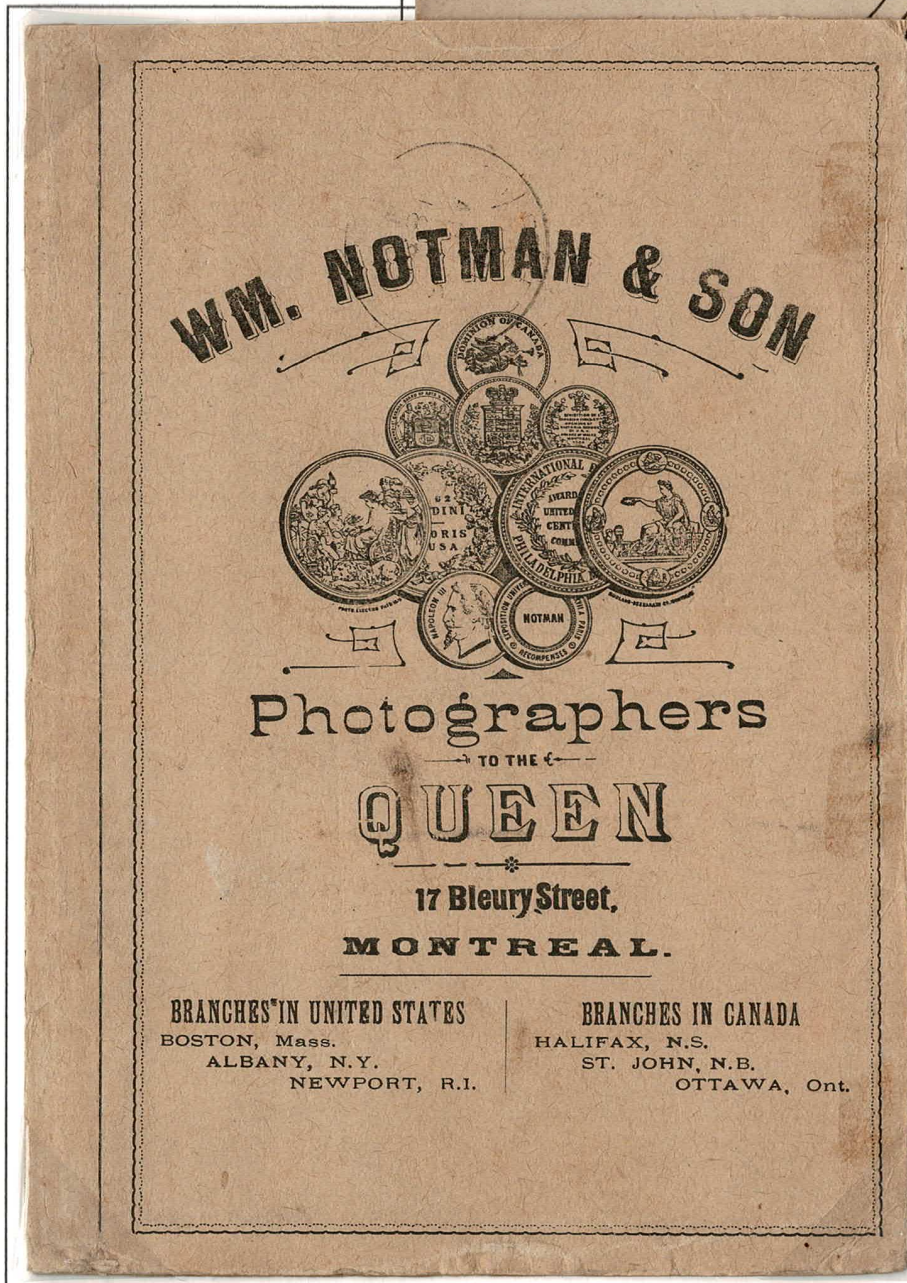
William Notman – Photographer to the Queen

After the Grand Trunk Railway commissioned Notman to document the construction of the Victoria Bridge in 1858, he prepared a leather-bound album of his photos and sent it to Queen Victoria in 1860. She was quite impressed and assigned a Royal Warrant naming Notman as “**Photographer to the Queen**”.

Notman used the Belt & Buckle symbol with the Warrant on Carte de Visite (CDV) mailers and small envelopes.



Montreal, Nov 26, 1876



On larger photo mailers Notman preferred to use illustrations of five medals won in photography competitions in Canada, Philadelphia, USA and Paris France. For maximum effect obverse & reverse of each medal was shown. The Royal Warrant description “**Photographers to the Queen**” remained.

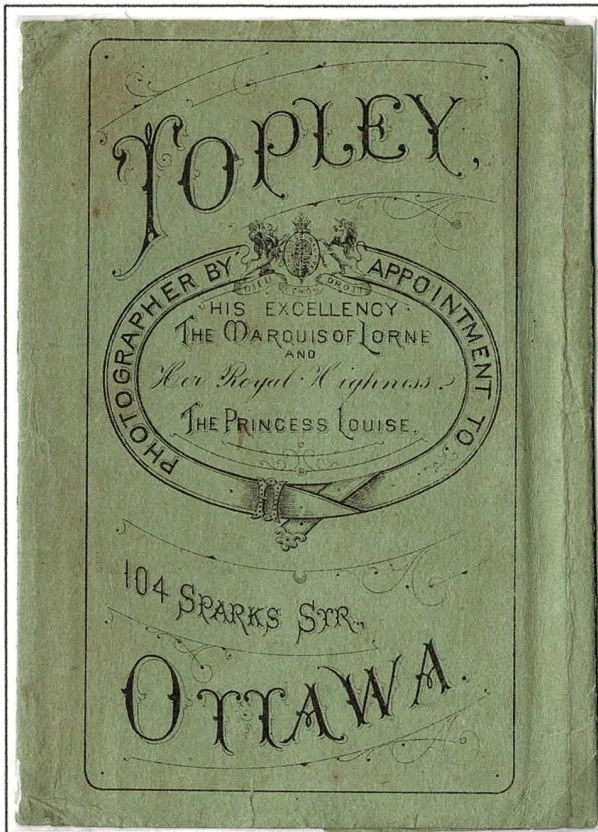
Montreal, August 1885

8. Royal Warrants

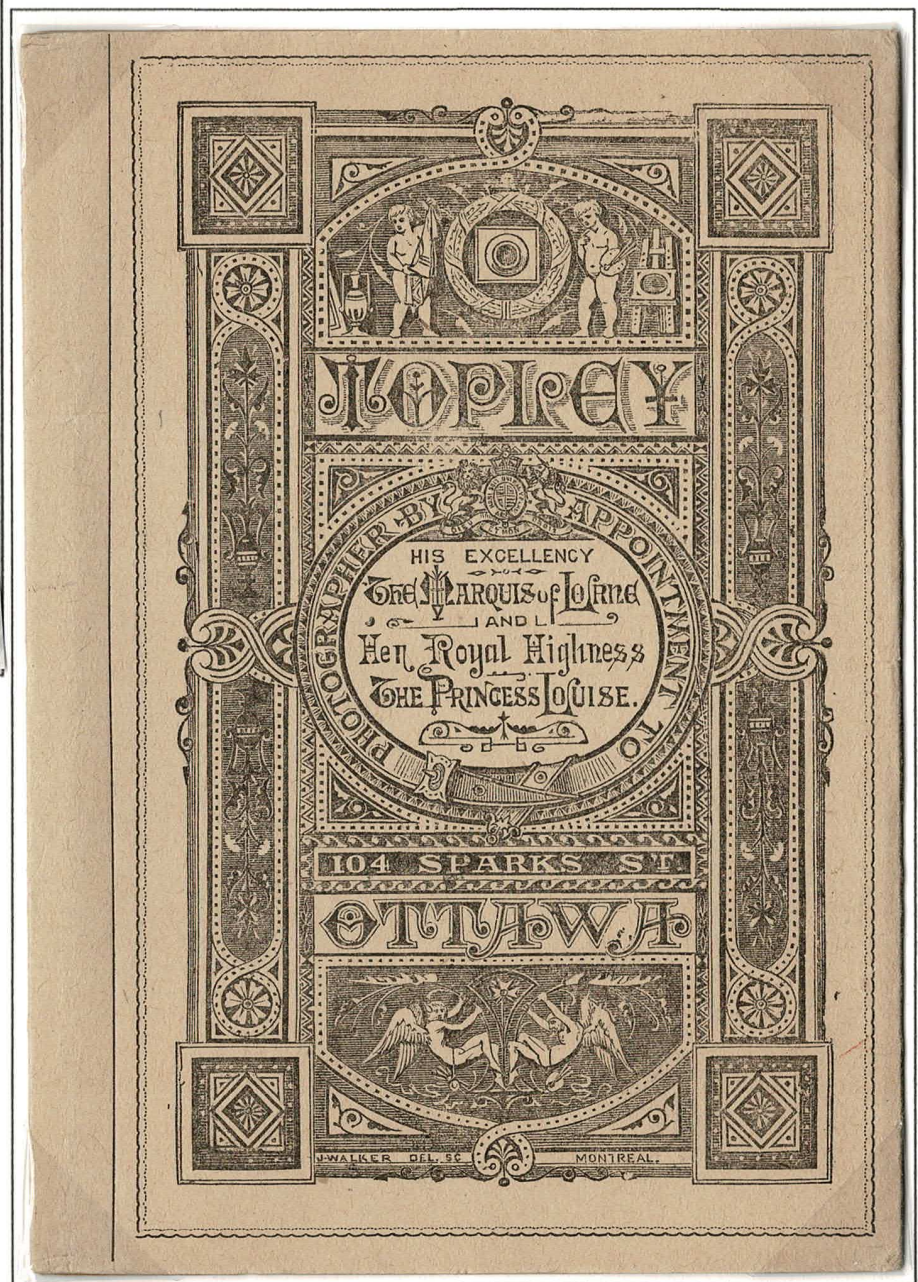
Photographers

James Topley – Photographer to Marquis of Lorne & Princess Louise

Topley apprenticed with Notman & in 1867, was assigned to manage a new Notman branch in Ottawa, where he eventually opened his own studio in 1872. Topley's Royal Warrant stated "Photographer by Appointment to His Excellency the Marquis of Lorne and Her Royal Highness The Princess Louise" The Marquis of Lorne was the Governor General of Canada 1878-1883 & H.R.H. The Princess Louise was the 4th daughter of Queen Victoria and the Marquis' wife.



Back of undated CDV Mailer with large horizontal Belt & Buckle Royal Warrant.



The backs of Topley's early larger mailers were very ornate & included belt & buckle symbolism with the Royal Warrant. Later versions had much simpler designs.

8. Royal Warrants

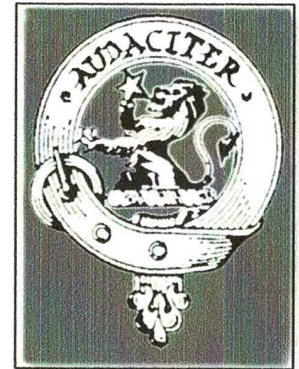
Photographers

Ewing & Co. Royal Warrant H.R.H. Prince Arthur

Ewing & Co. obtained a Royal warrant for His Royal Highness Prince Arthur, 7th child and 3rd son of Queen Victoria. Prince Arthur would later become the Governor General of Canada 1911-1916. Ewing & Co. combined the crown within the horizontal oval belt & buckle symbol with the lion and "Audaciter" motto from the Ewing clan crest on the top as their Royal Warrant symbol.



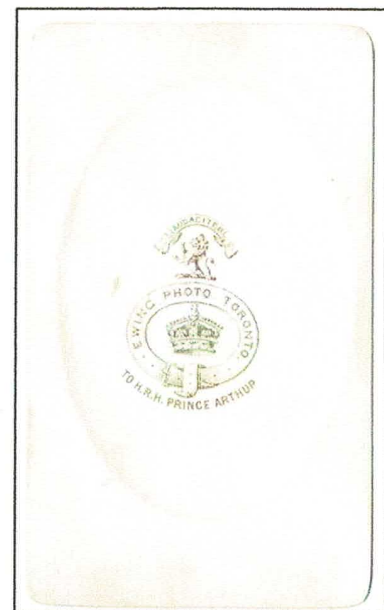
Undated CDV photo mailer



Ewing Clan Crest



Enclosed embossed oval CDV photo
"Uncle Eph"



Royal Warrant on CDV reverse
Reduced scan

8. Royal Warrants
Messers Hatchard

Publishers & Booksellers
187 Piccadilly, London

Hatchard had a Royal Warrant as Publishers & Booksellers to The King & Queen and the Royal Family.



King Edward VII crest with B & B



Queen Alexandra crest with B&B

London. 29. 8. 01
J. E. Taylor Esq



TO MESS^{RS} HATCHARD,
PUBLISHERS & BOOKSELLERS,



TO THEIR MAJESTIES THE KING & QUEEN & THE ROYAL FAMILY.

187, PICCADILLY, LONDON.

LIBRARIES ARRANGED & CATALOGUED,
 BOOKS VALUED FOR PROBATE.

Orders by Post Promptly Executed.

BOOKBINDING & PRINTING

TELEPHONE, N^o 4121, GERRARD.

| | | |
|--------------------------|-------------|-------------|
| <i>1 Golden Treasury</i> | <i>10/6</i> | <i>15</i> |
| <i>postage</i> | | <i>3</i> |
| | | <i>15/3</i> |
| <i>Credit by cash</i> | | <i>15</i> |
| <i>Balance Due</i> | | <i>3</i> |

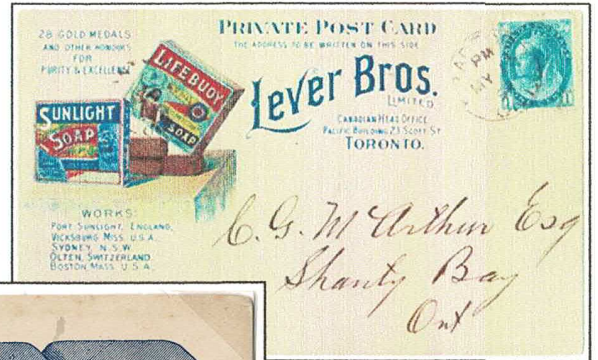
*Paid with amount
 4/9/07*

IF A RECEIPT BE REQUIRED FOR AMOUNTS UNDER 10^s
 A STAMP FOR POSTAGE SHOULD BE SENT.

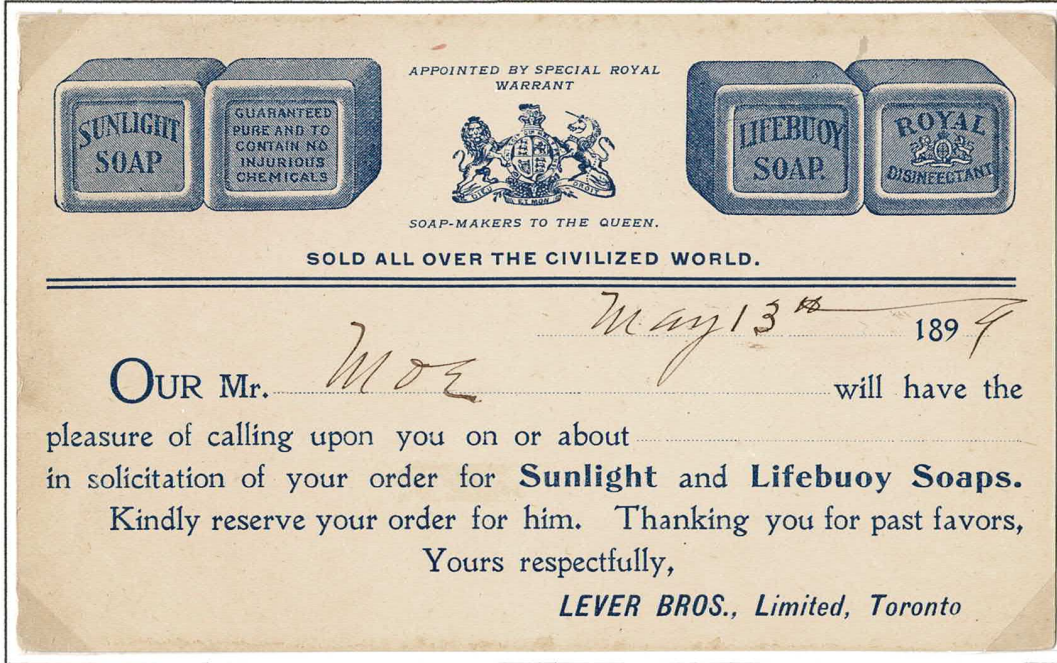
Hatchard Invoice with King Edward VII & Queen Alexandra's Royal Warrant and crests with Belt & Buckle symbols.

8. Royal Warrants Soap-Makers to the Queen

Lever Bros.



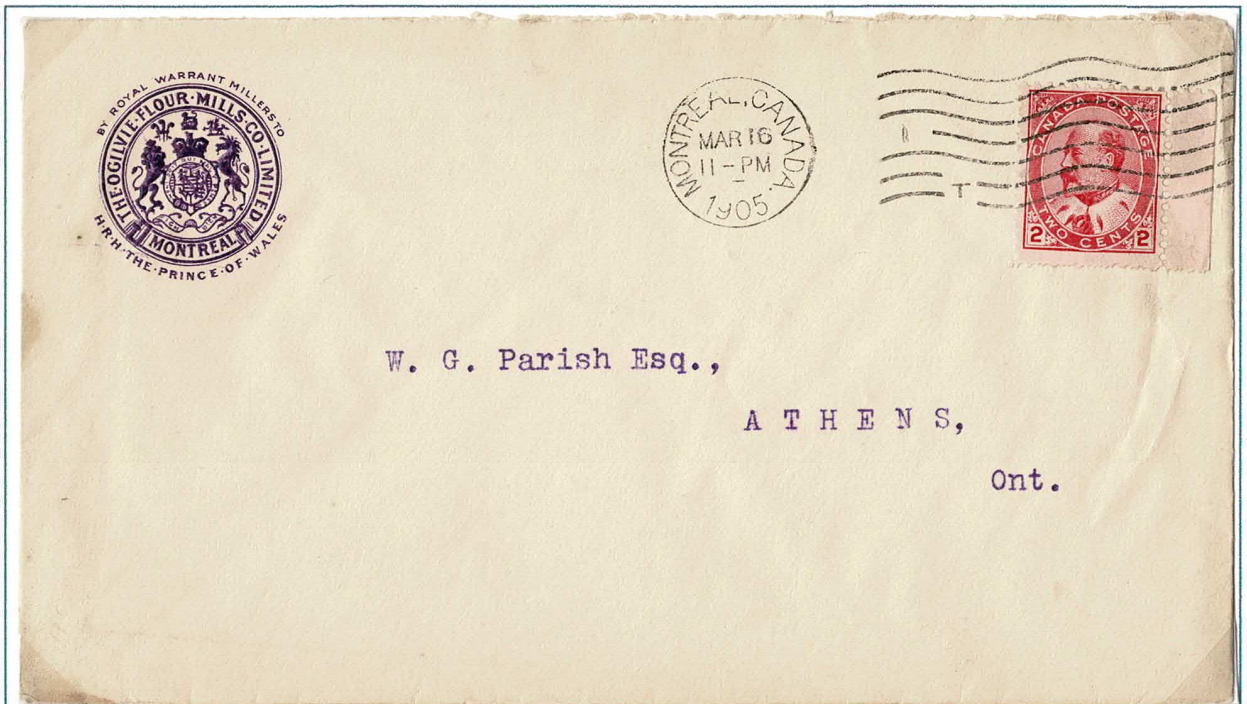
Soap-Makers to the Queen Warrant Detail



Reduced Front Scan

Bradford Ont.
May 13, 1899

Ogilvie Flour Mills Co. By Royal Warrant Millers to H.R.H. The Prince of Wales



Montreal,
Mar 16, 1905

9. Cachets

Royal Mail Steam Packet Company

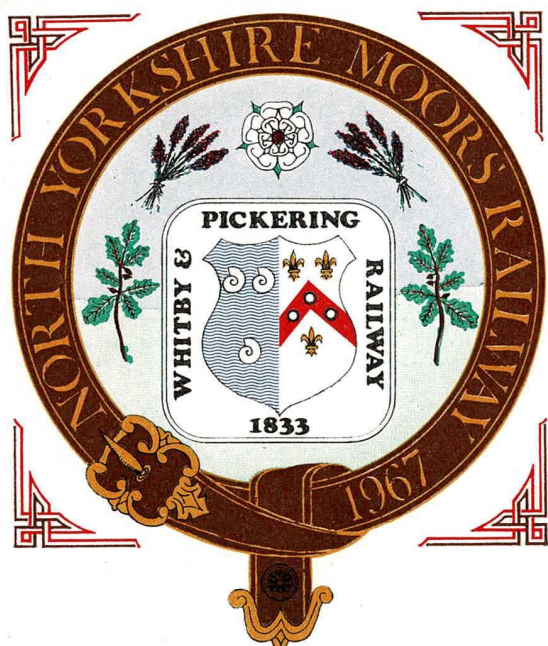
Mail posted on board were hand stamped with a **POSTED ON THE HIGH SEAS** Belt & Buckle cachet & a **PAQUET** cancellation. Ship mail also received a postmark at the port where it entered the mails.



RMSP Cachet, PAQUET cancel, Lisboa, Portugal, 25 Sept. 1915

North Yorkshire Moors Railway

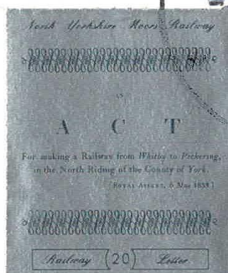
North Yorkshire Moors Railway in UK traces its history to 1833 when the Whitby & Pickering Railway was formed. It was closed in 1965. The Grosmont to Pickering line was reopened as a seasonal experience steam service in 1973.



WHITBY & PICKERING RAILWAY
 opened 1835/6
 Y & NMR 1845, NER 1854, LNER 1923, BR 1948
 Grosmont-Pickering closed 1965
NORTH YORKSHIRE MOORS RAILWAY
 Grosmont to Pickering re-opened 1973

ANNIVERSARY COVER

N.Y.M.R. 10
 First Train: April 22nd, 1973.
 Royal Opening: May 1st, 1973.
 W.&P.R. 150
 Act of Parliament
 Royal Assent: May 6th, 1833.



Mr. G. Jobling,
 33, Roseberry Road,
 BILLINGHAM,
 Co. Cleveland.

TO BE CALLED FOR AT GROSMONT

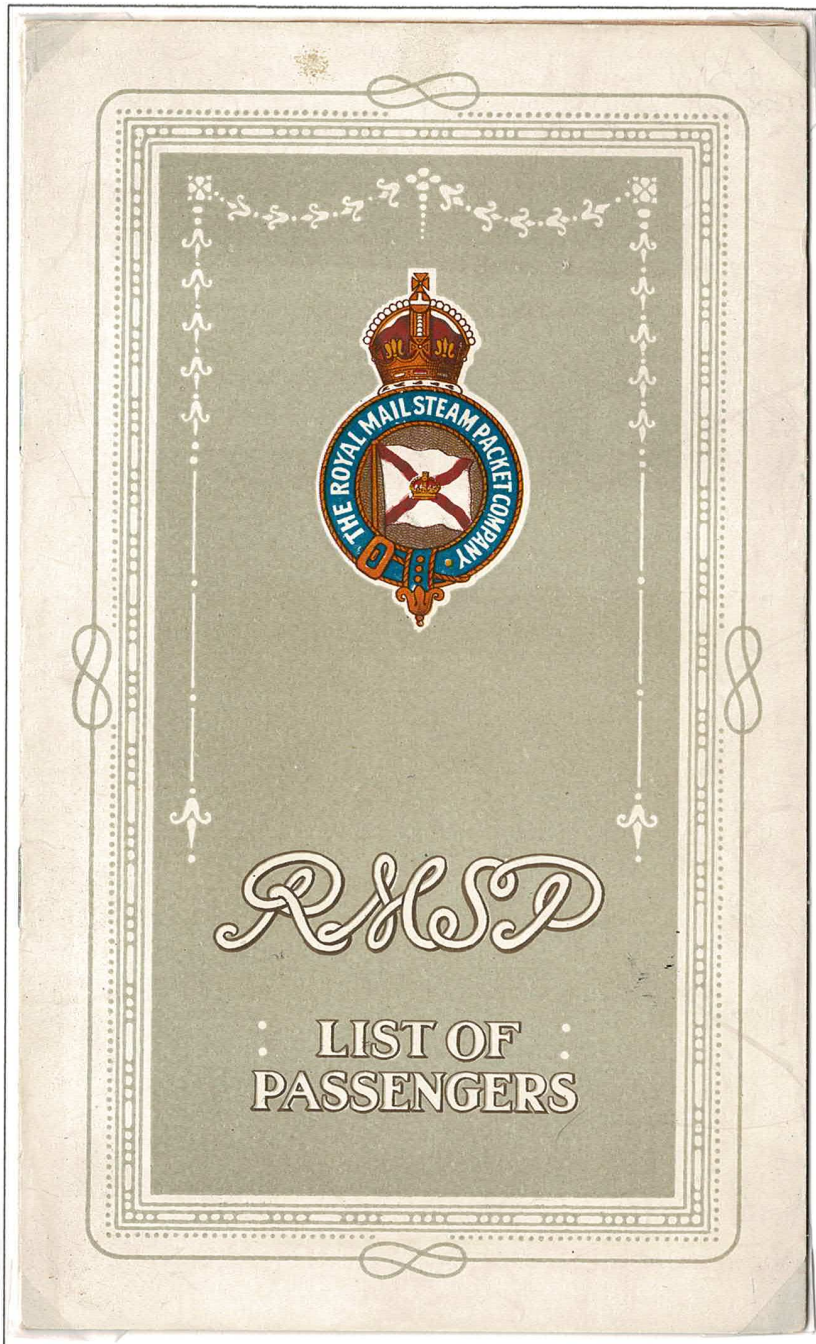
North Yorkshire Moors Railway Belt & Buckle Cachet on anniversary cover May 1, 1983.

10. Ephemera

Royal Mail Steam Packet

The Royal Mail Steam Packet ships used their Belt & Buckle emblem on printed material and even engraved on silverware used in the ships' dining rooms.

List of Passengers Booklet RMSP Arcadian Sailing from New York - March 30, 1912



SPECIAL NOTICE

Passengers are particularly requested to refer to the Cabin Information Booklets in the State-rooms for full details regarding arrangements on board, and for Customs Regulations, &c.

BELL TIME

| MIDDLE WATCH | | MORNING WATCH | |
|--------------|---------|---------------|---------|
| Midnight | 8 bells | 4.0 a.m. | 8 bells |
| 12.30 a.m. | 1 " | 4.30 " | 1 " |
| 1.0 " | 2 " | 5.0 " | 2 " |
| 1.30 " | 3 " | 5.30 " | 3 " |
| 2.0 " | 4 " | 6.0 " | 4 " |
| 2.30 " | 5 " | 6.30 " | 5 " |
| 3.0 " | 6 " | 7.0 " | 6 " |
| 3.30 " | 7 " | 7.30 " | 7 " |
| 4.0 " | 8 bells | 8.0 " | 8 bells |

| DAY WATCH | | AFTERNOON WATCH | |
|-----------|---------|-----------------|---------|
| 8.0 a.m. | 8 bells | Noon | 8 bells |
| 8.30 " | 1 " | 12.30 p.m. | 1 " |
| 9.0 " | 2 " | 1.0 " | 2 " |
| 9.30 " | 3 " | 1.30 " | 3 " |
| 10.0 " | 4 " | 2.0 " | 4 " |
| 10.30 " | 5 " | 2.30 " | 5 " |
| 11.0 " | 6 " | 3.0 " | 6 " |
| 11.30 " | 7 " | 3.30 " | 7 " |
| Noon | 8 bells | 4.0 " | 8 bells |

| DAG WATCHES | | EVENING WATCH | |
|-------------|---------|---------------|---------|
| 4.0 p.m. | 3 bells | 8.0 p.m. | 5 bells |
| 4.30 " | 1 " | 8.30 " | 1 " |
| 5.0 " | 2 " | 9.0 " | 2 " |
| 5.30 " | 3 " | 9.30 " | 3 " |
| 6.0 " | 4 " | 10.0 " | 4 " |
| 6.30 " | 5 " | 10.30 " | 5 " |
| 7.0 " | 6 " | 11.0 " | 6 " |
| 7.30 " | 7 " | 11.30 " | 7 " |
| 8.0 " | 8 bells | Midnight | 8 bells |

Reduced Booklet page with Bell Times

Memorandum from the **Dominion Bazaar Office**. Dominion Bazaar Co. with offices in Toronto and Winnipeg and advertised with Agencies in London England, Lyons, Malta, Riga Latvia, Sydney Australia, Puerto Rico and Cape Natal and as dealers in all kinds of Canadian and foreign postage & revenue stamps and publishers of the Dominion Bazaar.

Unusual use of the Belt & Buckle as the location to add script month and day.

Memorandum from

DOMINION BAZAAR OFFICE.

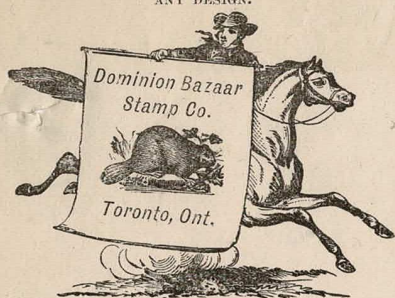
Rubber Hand Stamps,
ANY DESIGN.

Postage & Revenue
STAMPS.
ALBUMS.



COINS.
CRESTS.
CURIOSITIES.

Rubber Founts of Type.
Rubber Autograph Stamps.
Rubber Pocket Stamps.
Rubber Self-Inking Rotary
Dating Stamps.



INVENTORS OF THE **LORNEOGRAPH** APPARATUS FOR
Printing Facsimiles of Handwriting, Autographs, &c.

AGENTS WANTED.



Mr Pearson

Sir

Can you sell me a few hundred worth value for stamps?

An early reply with price will oblige

Yours truly

H. B. Bazaar

for office

11. Stationery

The Canadian Mining Institute

The Canadian Mining Institute was formed in 1898 and was in its 16th year when tragedy struck with the death of its President Dr. Alfred Ernest Barlow and his wife in the sinking of the Empress of Ireland.



912 RITZ-CARLTON HOTEL
SHERBROOKE STREET WEST
MONTREAL



G. L. Burland, Esq.,
373 Frank St.,
Ottawa,
Ont.



H MORTIMER-LAMB
SECRETARY

SHERBROOKE STREET WEST

MONTREAL,

Dear Sir:-

You will aware ere this of the loss the Institute has sustained by the death of Dr. A. E. Barlow, who, as well as his wife, were victims of the appalling disaster, the sinking of the Empress of Ireland. It is needless to refer to the devoted and self-sacrificing work of Dr. Barlow on behalf of the Institute during the many years of his association with the Society. This is known to all. No one, in fact, has done more than he to promote the interests of the Canadian Mining Institute, or of the industry it represents. This work he did without expectation of recognition or reward. It was a work

dated printed letter mailed to C.I.M. members at the 1 cent printed matter rate, solicited donations to establish an annual award in Dr. Barlow's honour. Barlow Memorial Medal continues to be presented annually by the successor organization, the Canadian Institute of Mining, Metallurgy and Petroleum.

12. Advertising Mail

Insurance Companies

Insurance companies used all over cover advertising with Belt & Buckle symbol, combined with other features such as establishment date, capital and 'Incorporation by a Special Act of Parliament' to denote trust and stability.

The Lancashire Insurance company



Dated Feb 7, 1867, with company handstamp, unmailed, unsealed, probably hand delivered by agent

Scottish Provincial Assurance Co.

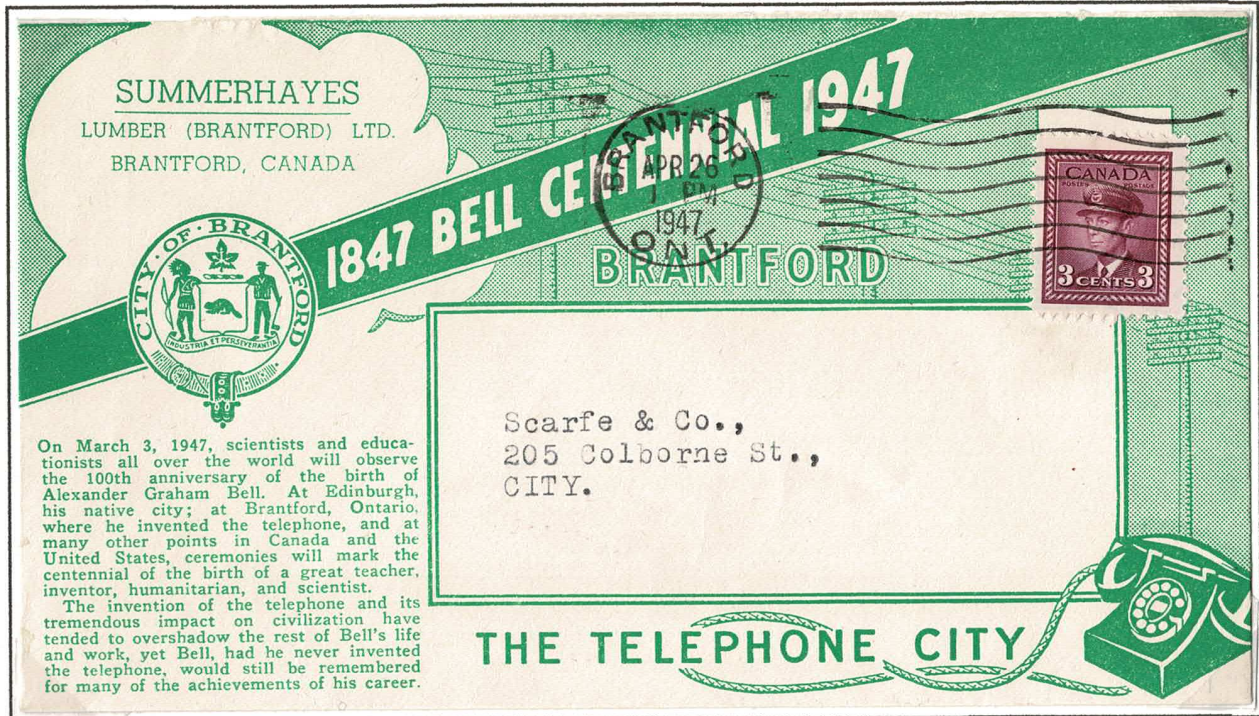


Montreal, Jun 1, 1882

12. Advertising Mail

City of Brantford

In 1947 the City of Brantford Ontario developed a commemorative envelope celebrating the centennial of the telephone invention in Brantford. The envelopes featured the City of Brantford logo with Belt & Buckle collar & upper left blank cloud area for return addresses of businesses utilizing the envelope.



Green version, Summerhayes Lumber, Apr 26, 1947



Blue Version, May 31, 1949 – Free mailing to Federal Gov't Dep't.

13 Epilogue

Belt & Buckle symbolism continued through first half of 20th century; however, the beaver & maple leaf symbolism grew in popularity. Initially the old & new symbols were used together but eventually Belt & Buckle yielded to the Beaver or Maple Leaf symbols.

Doull & Gibson, Montreal

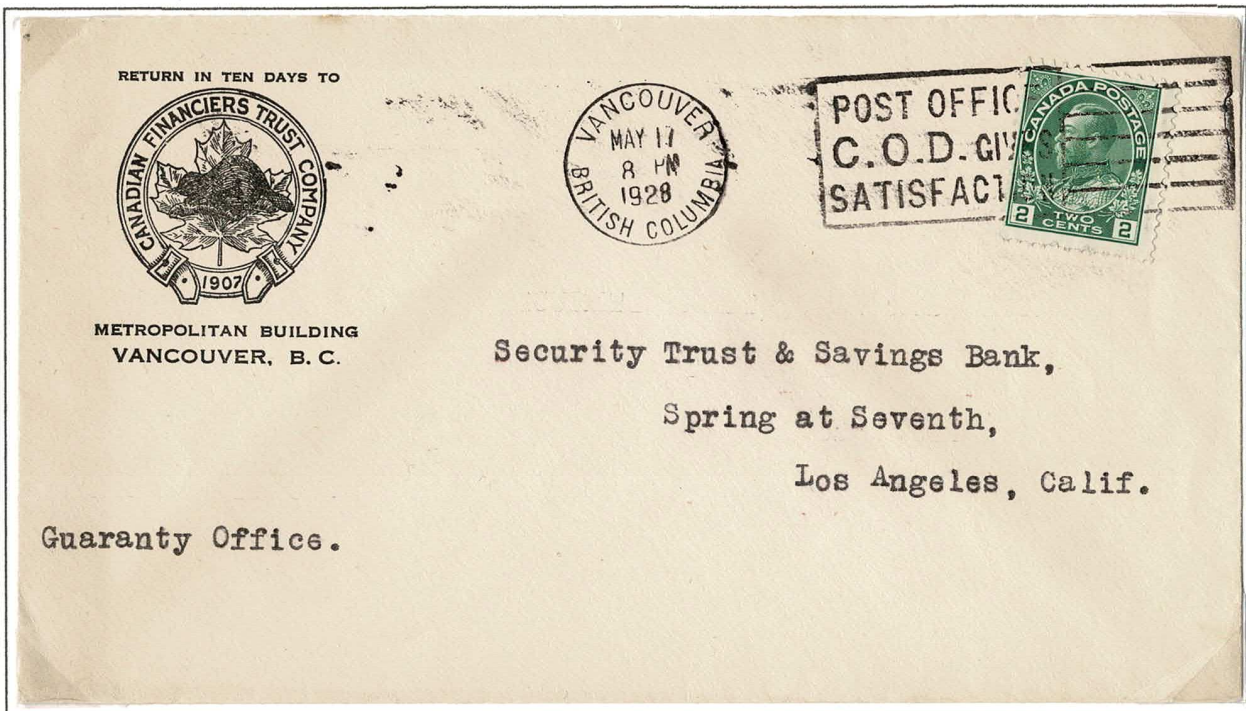
Note: Beaver framed by Belt & Buckle Symbol



Montreal Jun 30, 1897

Canadian Financiers Trust, Vancouver

Canadian Financiers Trust Co. established in 1907 represents the symbolism transition with a complex corner card logo comprising the Victorian Belt & Buckle, Beaver & Maple Leaf symbols.



Vancouver May 17, 1928