

THE KING'S HEAD BOOKLETS OF SOUTH AFRICA

Purpose

This exhibit explores the technical and administrative challenges faced in creating South Africa's King's Head Booklets, drawing insights from a report on the De La Rue records. It aims to deepen our understanding of their development, design changes, and production difficulties.

Context

This exhibit traces the development of the Union of South Africa's King's Head stamp booklets, highlighting the intricate processes, challenges, and decisions that shaped these popular postal items. It offers a chronological and philatelically significant account of their evolution.

De La Rue, a British security printer with colonial experience, created these booklets. This exhibit is based on the report by Trotter [3] about the remarkably preserved De La Rue archives, including correspondence, work orders, and proofs (some included in this exhibit), which survived World War II. These documents provide a unique look at the tender process, design iterations, linguistic challenges in a bilingual nation, and constant adaptation to changing postal rates and economic pressures.

The King's Head Booklets served practical purposes while also reflecting broader administrative and financial concerns. Advertising on interleaves reduced production costs and generated revenue. Changes in stamp denominations and booklet prices mirrored national postal rate changes. These booklets are more than philatelic objects; they are tangible records of South Africa's early Union era, capturing its administrative challenges, commercial innovations, and meticulous postal service craftsmanship.

Exhibit plan

Die proofs
Print Format
2/6 Booklet 1, 1913
2/6 Booklet 2, 1917
2/6 Booklet 3, 1920
3/- Booklet 4, 1921
3/6 Booklet, 1922
End of King's Heads

Scope

This exhibit explores the lifecycle of South Africa's King's Head stamp booklets, from their initial tender in 1911 to their replacement in 1926. It covers all documented booklet types (Types 1

through 5), including their unique overprints and surcharges. The exhibit also examines the internal stamp configurations, cover designs, and advertising integration throughout the booklet's history. Physical booklet examples, production material, and usage exemplars are supported with information from the De La Rue's archival records.

Five booklets were issued, 1913, 1917, 1920, 1921 and 1922. The booklets were sold at face value. All stamps were printed on Springbok watermarked paper, perf. 14.

Early Development: Tender and Initial Design



The Union booklets' journey began on 20 October 1911 with De La Rue's invitation to tender. Annexure D of the specification included 'Samples of Stamp Books', providing crucial precedents for the new South African issue. De La Rue's initial response on 9 November 1911 highlighted complexities regarding stamp quantities and the potential need for special printing plates. Initial design discussions focused on meticulous attention to both content and presentation.

Significance

This exhibit delves into the design, production, and evolution of the King's Head Booklets, using rare De La Rue archival evidence. It distinguishes between various varieties, revealing how administrative decisions, postal rate changes, and commercial strategies shaped their physical forms. By linking these items to their origins, the exhibit elevates them from postal artefacts to technical innovation and philatelic diversity.

Notation

The following notations are used in this exhibit:

- Own contributions indicated with *cursive font*.
- Rare items are indicated with 
- Interesting items are indicated by 

References

- [1] S. Hagger, *Handbook Catalogue - Union of South African Stamps*. Philatelic Federation of South Africa, 1986.
- [2] L. Erasmus, "The 3s Emergency: Innovation and Adaption in South Africa's King's Head Booklets," *SA Phil.*, vol. 102, no. 2, pp. 58-61, Apr. 2026.
- [3] B. Trotter, "The King's Head Booklets of South Africa", *The London Philatelist*, vol. 114, no. 1322, pp. 114-114, 2005.
- [4] B. Trotter, *The King's Head Stamps and Stationery of South Africa*. The Royal Philatelic Society London 24 May 2012.

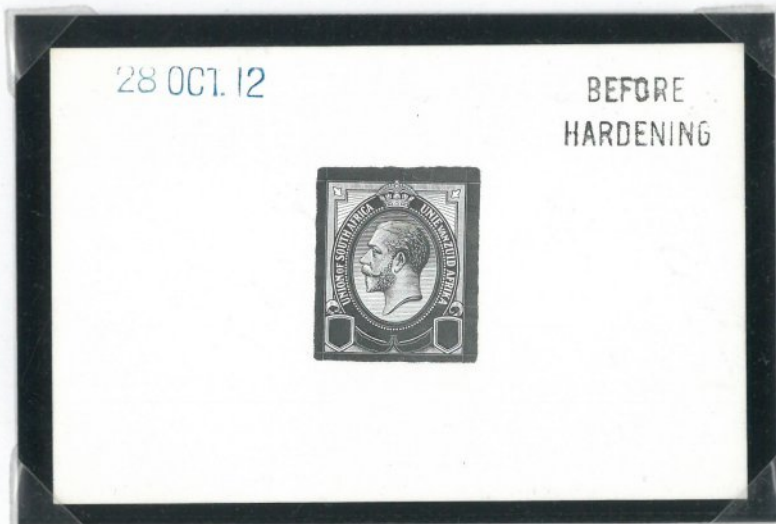
Die proofs

In 1912 tenders were invited for the production of a series of eleven values in a uniform design. The tender was awarded to Thomas De La Rue & Co of London. At the end of 1912, Bertram Mackennal's oval head design of King George V was chosen for the vignette and the upper corners with fleurs-de-lys and the lower corners with shields bearing the stamp's value. The stamps were inscribed bilingually in English and Dutch. The design has no symbolic connection with South Africa, except for the springbok watermark.

Die proofs forms part of the preparation process and quality control to transform an artist's design onto a mass producible stamp on an industrial scale with mechanical machines.



Mackennal head with uncleared surround, in black on white glazed card, no other markings



Master die proof without 'postage/postzegel' lettering and with uncleared 'banded' tablets below, value tablets and surrounds, etc., in black on glazed card marked "Before Hardening", dated 28 Oct 1912



1/2d die proof of the complete head and frame design in black on white glazed card, marked "Before Hardening", dated 7 Jul 1913



1d die proof of the complete head and frame design in black on white glazed card, marked "Before Hardening", dated 22 Nov 1912



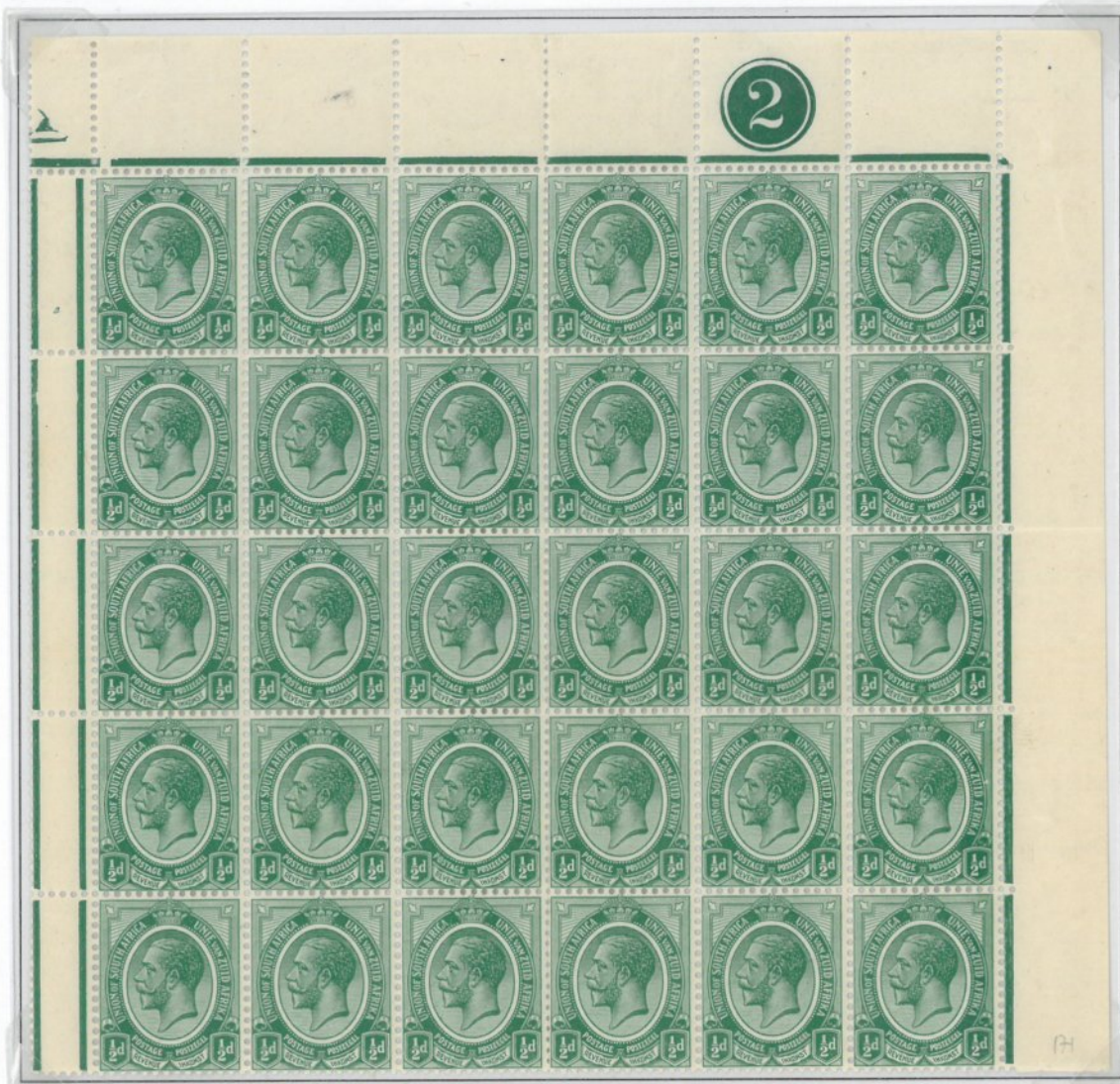
1½d die proof of the complete head and frame design in black on white glazed card, from the 'soft' die before hardening, dated 2 Feb 1921



2d die proof of the complete head and frame design in black on white glazed card, marked "Before Striking", dated 21 Sep 1921.

Print Format

Sheet Layout for Booklets 1 to 3



● $\frac{1}{2}d$ leave plate 2, upper half pane from North East pane, one of the largest blocks known to still exist ●

Sheet Layout for Booklets 4 and 5



$1\frac{1}{2}d$ tête-bêche columns 1 to 6 from the left pane


Booklet 1, 2/6 Red, 1 September 1913

De La Rue's quotation on 15 April 1912 for 200,000 booklets, complete with stamps, marked a shift from using special plates like those used for British booklets.

December 1912 Appendix Sheet: First Proposed Cover Proofs with Dutch Errors

4th Dec^r 1912

Appendix

<p>TELEGRAMS INLAND. INCLUDING LOURENO MARQUES 1d. per word, with a minimum charge of 1s.</p> <p>RHODESIA. 2d. per word, with a minimum charge of 2s.</p> <p>For CABLE RATES see POSTAL GUIDE.</p>	<p>TELEGRAMMEN BINNELAND. INSLUITENDE LOURENO MARQUES 1d. per woord, met minimumkosten van 1s.</p> <p>RHODESIA. 2d. per woord, met minimumkosten van 2s.</p> <p>For KABEL TARIEVEN zie POST GIDS.</p>	<p>UNION OF SOUTH AFRICA.</p> <p>POSTAGE  POST- STAMPS. ZEGELS.</p> <p>2^s/6^d</p> <p>UNIE VAN ZUID AFRIKA.</p>
--	---	--

<p>INLAND POSTAGE</p> <p>Letters 1d. per ½ oz. Postcards . . . ½d. each. Newspapers . . ½d. per 4 ozs. Books, Commercial Papers and Samples } ½d. per 2 ozs. Parcels 2d. per 4 ozs. Do. Agricultural, Minimum Rate, 3d. per 1½ lbs.</p> <p>For Rate to Bechuanaland Protectorate, Rhodesia and Mozambique, see Postal Guide.</p>	<p>Binnenlandse Postgelden</p> <p>Brieven 1d. per ½ oz. Briefkaarten . . ½d. eak. Nieuwsbladen . ½d. per 4 ozs. Boeken, Handelspapieren en Monsters . . } ½d. per 2 ozs. Pakketten . . . 2d. per 4 ozs. Do. Landbouw, Minimum Tarief, 3d. per 1½ lbs.</p> <p>Voor Tarieven naar Bechuanaland Protectoraat, Rhodesia en Mozambique, zie Post Gids.</p>	<p>Oversea Postage</p> <p>Letters. Great Britain, India, and the Colonies . . . 1d. per ½ oz. Foreign Countries 2½d. per ½ oz. Newspapers & Printed Matter. All Countries ½d. per 2 ozs. Commercial Papers. All Countries ½d. per 2 ozs. With a Minimum of 2½d. Sample Packets. All Countries ½d. per 2 ozs. With Minimum of 1d.</p> <p>For Parcels Rate, See Postal Guide.</p>	<p>Buitenlandse Postgelden</p> <p>Brieven. Great Britain, Indie, en de Koloniën . . . 1d. per ½ oz. Vreemde Landen 2½d. per ½ oz. Nieuwsbladen & Drukwerk. Alle Landen . ½d. per 2 ozs. Handelspapieren. Alle Landen . ½d. per 2 ozs. Met Minimum 2½d. Monster Pakketten. Alle Landen . ½d. per 2 ozs. Met Minimum 1d.</p> <p>Voor Pakket Tarieven, Zie Post Gids.</p>
---	--	--	---

Unapproved proofs of front and back covers in black text on red glazed card. Includes both unsevered outside and inside covers.

17th Feby. 1913.

Appendix

SM
19-2-13.

<p>TELEGRAMS INLAND. INCLUDING LOURENÇO MARQUES 1d. per word, with a minimum charge of 1s.</p> <p>RHODESIA. 2d. per word, with a minimum charge of 2s.</p> <p>For CABLE RATES see POSTAL GUIDE.</p>	<p>TELEGRAMMEN BINNENLAND. INSLUITENDE LOURENÇO MARQUES 1d. per woord, met minimum-kosten van 1s.</p> <p>RHODESIA. 2d. per woord, met minimum-kosten van 2s.</p> <p>Voor KABELTARIEVEN zie men de POSTGIDS.</p>	<p>UNION OF SOUTH AFRICA.</p> <p>POSTAGE  POST. STAMPS. ZEGELS.</p> <p>2/6^d</p> <p>UNIE VAN ZUID AFRIKA.</p>
--	--	---

INLAND POSTAGE	Binnenlandse Postgelden	Landen
Letters 1d. per ½ oz.	Brieven 1d. per ½ ons.	½ ons.
Postcards ½d. each.	Postkaarten ½d. elk.	1 ons.
Newspapers ½d. per 4ozs.	Nieuwsbladen ½d. per 4 ons.	4 ons.
Books, Commercial Papers and Samples } ½d. per 2ozs.	Boeken, Handels-papieren en Monsters } ½d. per 2ons.	2ons.
Parcels 2d. per 4ozs.	Pakketten 2d. per 4ons.	4ons.
Do. Agricultural, Minimum Rate, 3d. per 1½ lbs.	Do. Landbouwpakketten, Minimum-tarief, 3d. per 1½ lb.	1½ lb.
For Rates to Bechuanaland Protectorate, Rhodesia and Mozambique, see Postal Guide.	Voor Tarieven naar Bechuanaland-Protectoraat, Rhodesia en Mozambique, zie men de Postgids.	Bechuanaland-Protectoraat, Rhodesia en Mozambique, zie men de Postgids.

SM
25.2.13.

Oversea Postage	Buitenlandse Postgelden
Letters. Great Britain, India, and the Colonies . . . 1d. per ½ oz. Foreign Countries 2½d. per ½ oz.	Brieven. Groot-Brittanje, Indië, en de Koloniën . . . 1d. per ½ ons. Vreemde Landen 2½d. per ½ ons.
Newspapers & Printed Matter. All Countries ½d. per 2ozs.	Nieuwsbladen & Drukwerk. Alle Landen . . . ½d. per 2ons.
Commercial Papers. All Countries ½d. per 2ozs. With a Minimum of 2½d.	Handelspapieren. Alle Landen . . . ½d. per 2ons. Met Minimum 2½d.
Sample Packets. All Countries ½d. per 2ozs. With Minimum of 1d.	Monsterpakketten. Alle Landen . . . ½d. per 2ons. Met Minimum 1d.
For Parcel Rates, See Postal Guide.	Voor Pakkettarieven zie men de Postgids.

To printer:
This should not be in thick type
but in same type as
English word opposite Minimum

Separated front and back cover proofs, showing corrected Dutch language. The outside covers are initialed and dated 19 Feb 1913 (approved). An additional inside front cover proof shows a correction from bold to ordinary type for 'Minimum', approved 26 Feb 1913. Handwriting of Secretary to the High Commissioner in London.

Released Booklet 1

Type 1 booklets contained twenty-four 1d stamps (four pages of six) and twelve ½d stamps (two pages of six), with blank interleaves. These panes were cut from standard stamp sheets with an upright watermark, perf. 14, using part of the sheet margins and half the gutter for binding. Priced at 2s 6d, they were stapled either at the left or right edge. Despite significant print runs (Requisitions No. 5771, 5770, 7730, 9123, 189) resulted in a total of 1,424,676 Type 1 booklets being delivered, early examples remain notably difficult to acquire for collectors today, highlighting their intense contemporary usage.

Deep enamelled red (shades) cover, black printing, showing the original 2s 6d price and "UNION OF SOUTH AFRICA" / "UNIE VAN ZUID AFRIKA" inscription.



Empty used booklet with unaxed interleaves front

Used stamps



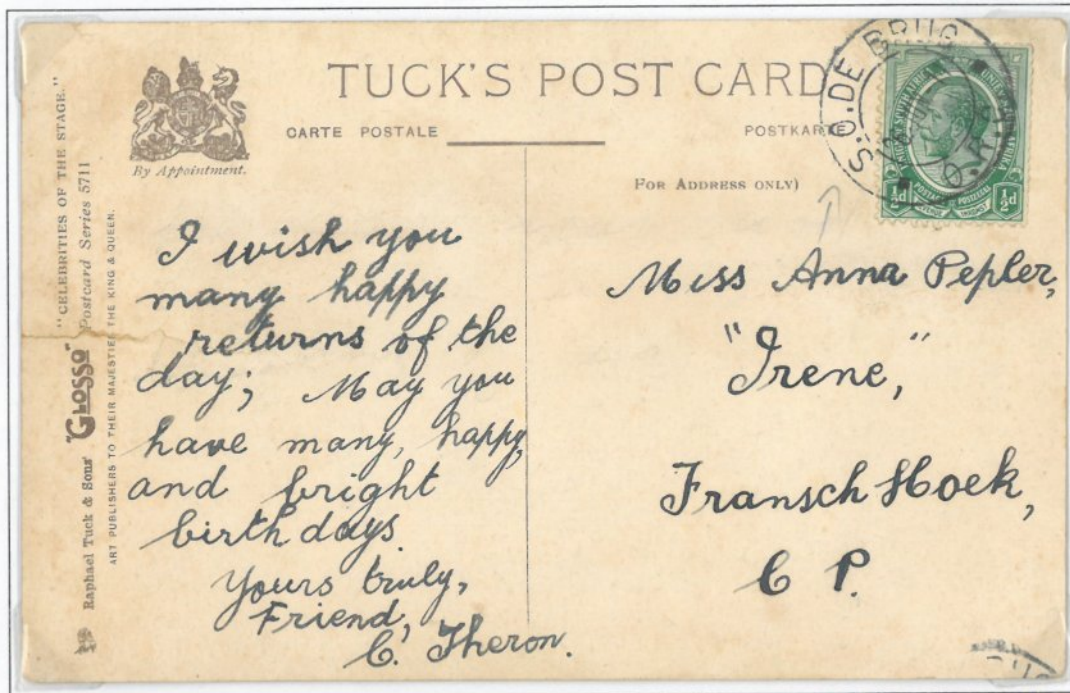
½d, up. wm. col. 3 or 9, Booklet 1, cancelled Fort Beaufort, 1913



1d, up. wm., col. 1 and 2, 5 and 6, 7 and 8, or 11 and 12, Booklet 1, cancelled Pretoria, 13:45, 1 Nov. 1914



½d, up. wm. col. 4 or 10, Booklet 1, cancelled Cape Town, 10:30 during Jul 1916



1/2 from top of pane, Booklet 1, post card, cancelled S.O. De Brug to Fransch Hoek, morning, 26 Dec 1914



1d from col. 3 top of pane, Booklet 1, envelope, cancelled Graskop to Jhb, 19 Sep 1916 with Johannesburg Parcel Office cancelled, 11:30, 21 Sep 1916

Booklet 2, 2/6 Red, 1917

Type 2 booklets (Requisition No. 934, 1916) retained the stamp configuration of Type 1 but introduced a revised back cover. Rhodesian telegram rates were replaced by Post Office Savings Bank information. The underlying stamp contents (twenty-four 1d, twelve ½d, and blank interleaves) and the selling price of 2s 6d remained unchanged throughout these types. Requisitions No. 934 and 2032 led to the delivery of a total of 1,376,000 Type 2 booklets.

Released Booklet 2 with waxed interleaves



Incomplete booklet stapled on left (as seen from the front) showing back, orange red shade



Incomplete booklet stapled on right (as seen from the front), dark red shade



Incomplete booklet stapled on left (as seen from the back) showing back, dark red shade

Used stamps



½d pair, up wm., row 2, col. 2/3, or 8/9, Booklet 2, Cathcart, afternoon, 17 Jul 1918



½d pair, up wm., row 2, col. 4/5 or 10/11, Booklet 2, 27 Dec 1918



½d pair, up wm., row 1, col. 2/3 or 8/9, Booklet 2, Potchefstroom, 19:30, 24 Nov 1919



1d, up wm., row 2, col. 3 or 9, Booklet 2, Kru??, 5 Nov 1918



1d pair, up wm., row 1, col. 1/2, or 7/8, Booklet 2, Krugersdorp, Nov 1919



1d, up wm., row 2 col. 1 or 7, Booklet 2, 8:15??, 1919

Usage on Cover



1/2d from top of pane. Booklet 2, post card, cancelled Howick to Durban, morning, 22 Dec 1919



Two single 1d from the top and bottom of pane each, Booklet 2, cancelled Pretoria Registered Letter Office to Luchhoff, 16:15, 10 Mar 1917, transit cancellation Fauresmith 12 Mar 1917, arrival Luchhoff 13 Mar 1917.

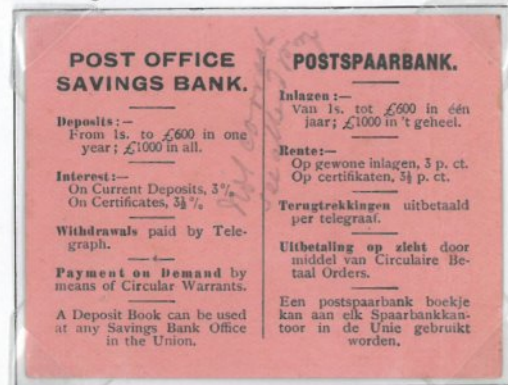
Booklet 3, 2/6 Salmon Pink, 1920

South African authorities wished to change the wording on both the front and back outer covers.

11 January 1919 proofs on salmon-coloured unglazed card

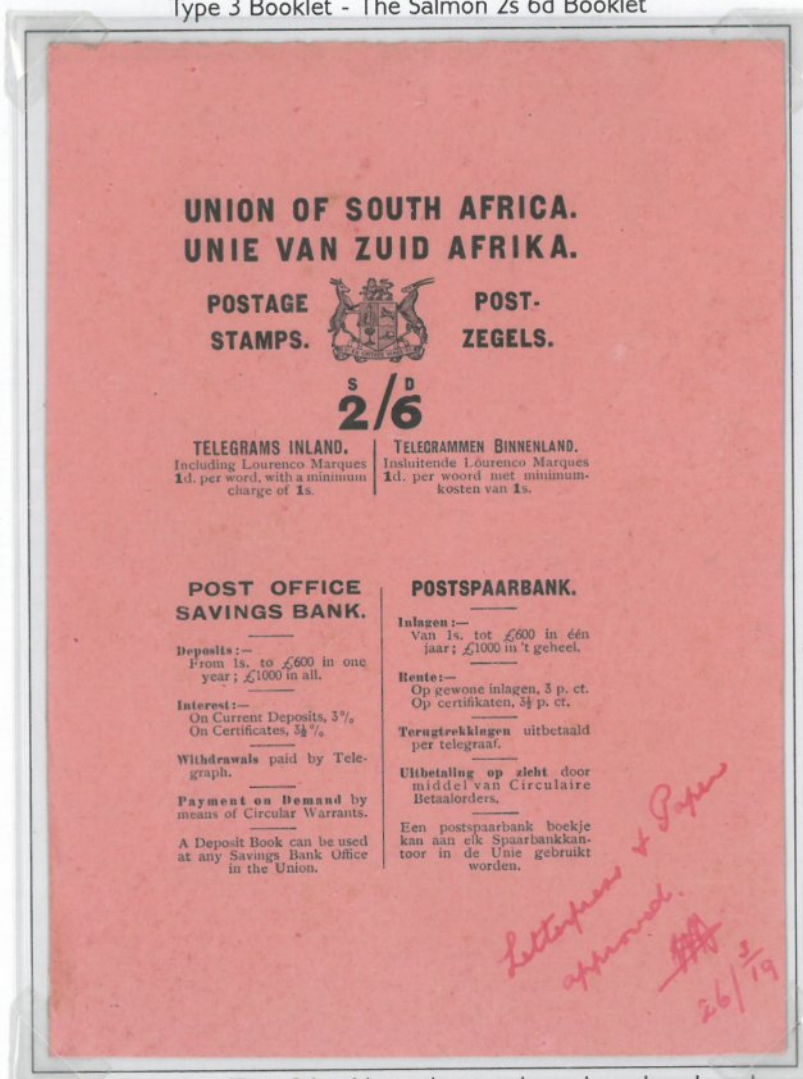


Proof of front cover



Proof of back cover with a pencil manuscript note indicating an error in the Dutch wording ('Betaal Orders' as two words)

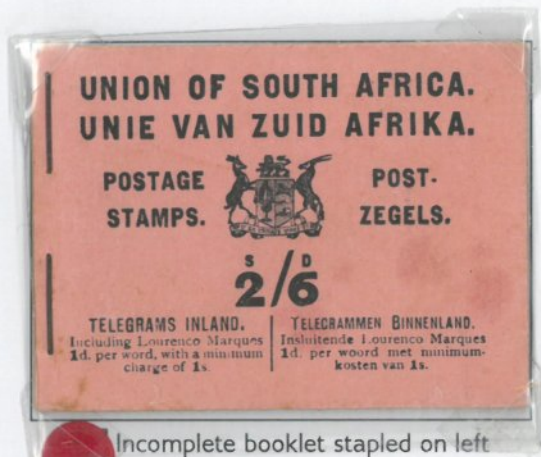
Type 3 Booklet - The Salmon 2s 6d Booklet



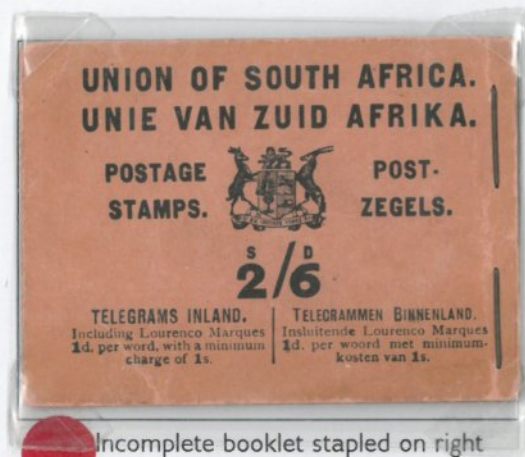
Complete Type 3 booklet, salmon-coloured, unglazed card covers. Inland telegram information on front. Post Office Savings Bank information on back. Approved both for wording and paper, 26 Mar 1919.

Released Booklet 3

Type 3 booklets (Requisition No. 184, 1918) further revised both front and back cover designs, most notably transitioning to an unglazed salmon-coloured card. The underlying stamp contents (24 1d, 12 ½d) and 2s 6d selling price remained consistent through these types. Requisition No. 184 led to the delivery of a total of 1,056,000 Type 3 booklets.



Incomplete booklet stapled on left showing front



Incomplete booklet stapled on right showing front



Booklet stapled on left showing front



Booklet stapled on left inside front



Waxed interleaf stapled at left



1/2d pane stapled at left



1/2d pane stapled at right



1d pane stapled at left



1d pane stapled at right

Oversea Postage	Buitenlandse Postgelden
Letters. Great Britain, India, and the Colonies . . . 1d. per 1/2 oz. Foreign Coun- tries 2 1/2d. per 1/2 oz.	Brieven. Groot-Brittanje, Indië, en de Kolonieën . 1d. per 1/2 ons. Vreemde Lan- den 2 1/2d. per 1/2 ons.
Newspapers & Printed Matter. All Countries 3/4d. per 2 ozs.	Nieuwsbladen & Drukwerk. Alle Landen . 3/4d. per 2 ons.
Commercial Papers. All Countries 3/4d. per 2 ozs. With a Minimum of 2 1/2d.	Handelspapieren. Alle Landen . 3/4d. per 2 ons. Met Minimum 2 1/2d.
Sample Packets. All Countries 3/4d. per 2 ozs. With Minimum of 1d.	Monsterpakketten. Alle Landen . 3/4d. per 2 ons. Met Minimum 1d.
For Parcel Rates, See Postal Guide.	Voor Pakkettarieven zie men de Postgids.

Booklet stapled on left inside back

POST OFFICE SAVINGS BANK.	POSTSPAARBANK.
Deposits:— From 1s. to £600 in one year; £1000 in all.	Inlagen:— Van 1s. tot £600 in één jaar; £1000 in 't geheel.
Interest:— On Current Deposits, 3 1/2% On Certificates, 5 1/2%	rente:— Op gewone inlagen, 3 p. ct. Op certifikaten, 5 1/2 p. ct.
Withdrawals paid by Tele- graph.	Ternstrekkingen uitbetaald per telegraaf.
Payment on Demand by means of Circular Warrants.	Uitbetaling op zicht door middel van Circulaire Betaalorders.
A Deposit Book can be used at any Savings Bank Office in the Union.	Een postspaarbank boekje kan aan elk Spaarbankkan- toor in de Unie gebruikt worden.

Booklet stapled on left outside back

Used stamps

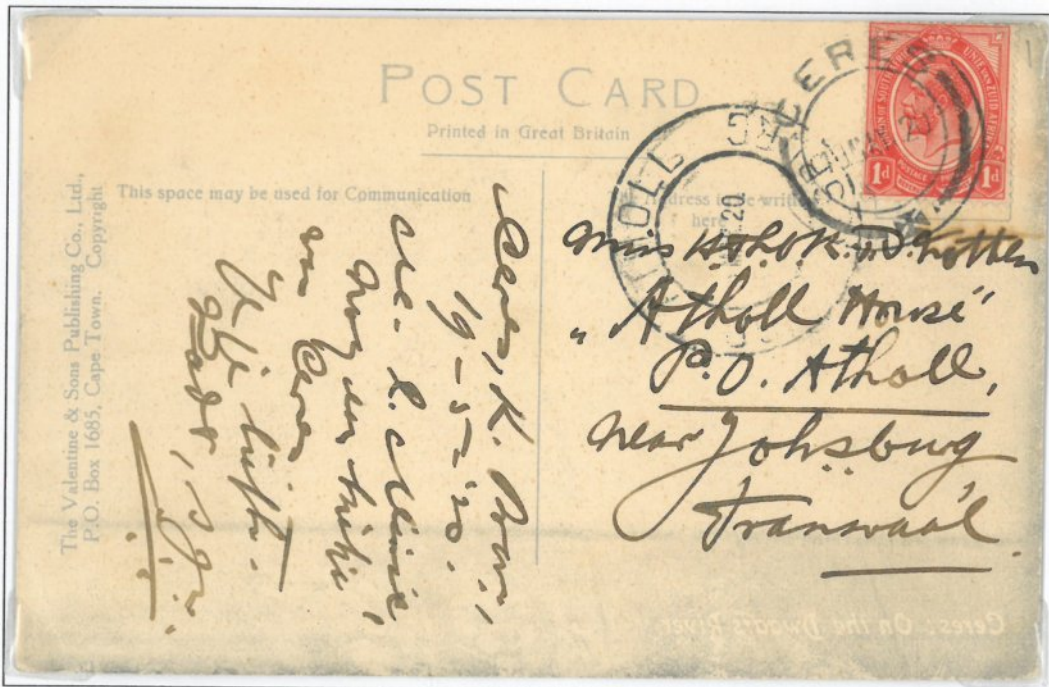


1/2d, up. wm., col. 4 and 5 or 10 and 11, Booklet 3, cancelled Kenhardt, morning of 5 Mar 1925



1/2d and 1d from top of pane, Booklet 3, cancelled Usakos, SWA, 23 Jul 1920

Usage on Post Card



1d from top of pane, Booklet 3, post card, cancelled Ceres to Atholl, 19 May 1920

Booklet 4, 3/- Salmon Pink, 1921

In February 1914, the South African Postal Authority inquired about advertising in booklets to reduce production costs. De La Rue provided pricing and technical advice on paper choice and advertising formats.

25 JAN 1921

UNION OF SOUTH AFRICA
Postage Stamps.



UNIE VAN ZUID AFRIKA
Post-zegels.

3/0

Telegrams Inland.

Including Lourenco Marques and South West Africa (overland), a minimum charge of **1s. 3d.** for twelve words, and **1d.** per word thereafter.

For rates to Bechuanaland Protectorate, Rhodesia and Mozambique, see Postal Guide.

Telegrammen Binnenland.

Insluitende Lourenco Marques en Zuid West-Afrika (overland). Minimumtarief **1s. 3d.** voor twaalf woorden, en **1d.** per woord daarna.

Voor tarieven naar Bechuanaland-Protectoraat, Rhodesia en Mozambique zie Postgids.

POST OFFICE SAVINGS BANK.

Deposits:—
From 1s. to £1,200 in one year; £2,000 in all.

Interest:—
On Current Deposits, 3½%
On Certificates, 4½%

Withdrawals paid by Telegraph.

Payment on Demand by means of Circular Warrants.

A Deposit Book can be used at any Savings Bank Office in the Union.

POSTSPAARBANK.

Inlagen:—
Van 1s. tot £1,200 in één jaar; £2,000 in 't geheel.

Rente:—
Op gewone inlagen, 3½%
Op certifikaten, 4½%

Terugtrekkingen uitbetaald per telegraaf.

Uitbetaling op zicht door middel van Circulaire Betaalorders.

Een postspaarbank boekje kan aan elk Spaarbankkantoor in de Unie gebruikt worden.

INLAND POSTAGE.

Letters 1½d. per 1 oz.
Postcards 1d. each.
Newspapers ½d. for 4 oz.
Books, Commercial Papers and Samples } ½d. for 2oz.
Parcels 6d. per lb.
Minimum charge 2d. for 4oz.
Do. Agricultural rate, 3d. for 1½ lb., 1s. for 11 lb.

BINNENLANDSE POSTTARIEF.

Brieven 1½d. per 1 oz.
Postkaarten 1d. elk.
Nieuwsbladen .. ½d. voor 4 oz.
Boeken, Handelspapieren en Monsters } ½d. voor 2oz.
Pakketten 6d. per lb.
Minimumtarief 2d. voor 4oz.
Do. Landbouw tarief, 3d. voor 1½ lb., 1s. voor 11 lb.

OVERSEA POSTAGE.

Letters.
United Kingdom, Egypt, India, the Dominions & Colonies. 1½d. per 1oz.
Foreign Countries .. 2½d. per 1oz.
Newspapers & Printed Matter
All Countries ½d. for 2oz.
Commercial Papers.
All Countries ½d. for 2oz.
With a minimum of 2½d.
Sample Packets.
All Countries ½d. for 2oz.
With a minimum of 1d.

For Parcel Rates, see Postal Guide.

BUITENLANDSE POSTTARIEF.

Brieven.
Verenigd Koninkrijk, Egypte, Indië, en de Koloniën .. 1½d. per 1oz.
Vreemde landen 2½d. per 1oz.
Nieuwsbladen en Drukwerk.
Alle landen .. ½d. voor 2oz.
Handelspapieren.
Alle landen .. ½d. voor 2oz.
Met minimum 2½d.
Monsters.
Alle landen .. ½d. voor 2oz.
Met minimum 1d.

Voor Pakkettarieven zie Postgids.

Type 3 booklet proof, 25 Jan 1921, approved by the Director of Stores, Office of the High Commissioner, London, 28 Jan 1921

Requisition 1291 dated 12 March 1920 for 326,400 booklets of type 3 were cancelled. Inland postal rate increased to 1½d on 10 May 1920, with 1½d stamps available to the public from 23 August 1920.

Requisition 1291 was reissued on 24 February 1921 for booklets containing two panes of ½d, 1d, 1½d and featured integrated advertising interleaves for the first time. Panes were crafted from sheets printed specifically for this purpose. Thus, half of the booklets were stapled through the left side with an upright watermark, while the other half were stapled through the right side with an inverted watermark.

right
left

Type 4a Cover Proofs, 2 May 1921

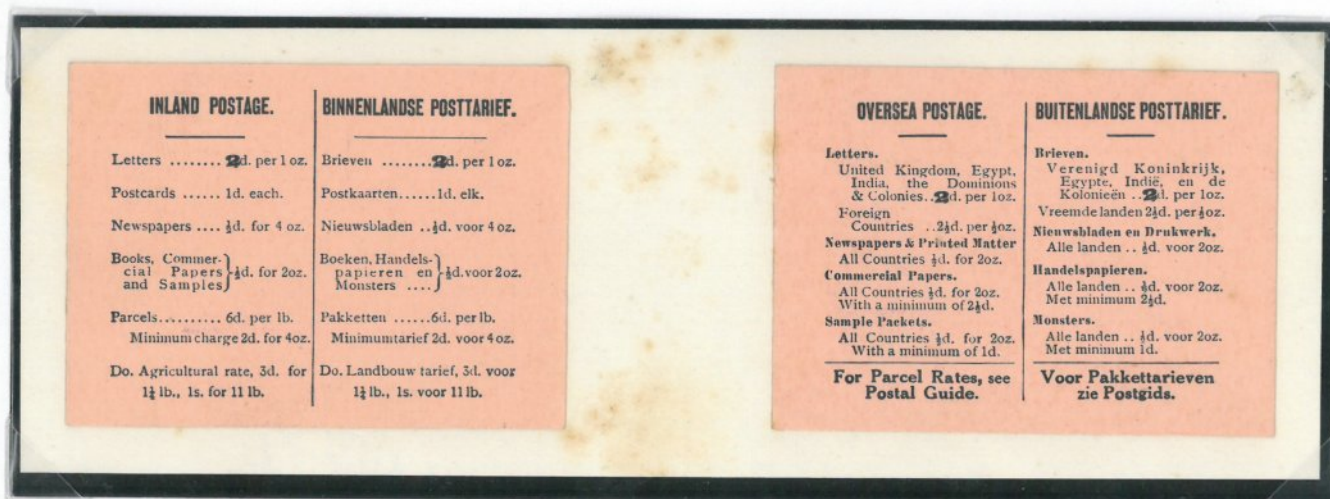
Postal rate changes effective 1 June 1921 resulted in a suspension of booklet orders and a content revision. The sudden change in postage rates necessitated surcharges overprints on newly printed covers.

Previously, it was thought that Type 4 booklet was printed before 4a. *The evidence below shows the '2' overprint was issued first, followed only later by the '2d' overprint.*

Salmon-coloured covers on unglazed paper proofs for urgent overprinting costing £185 for 80,000 booklets, affixed to two pieces of thin card



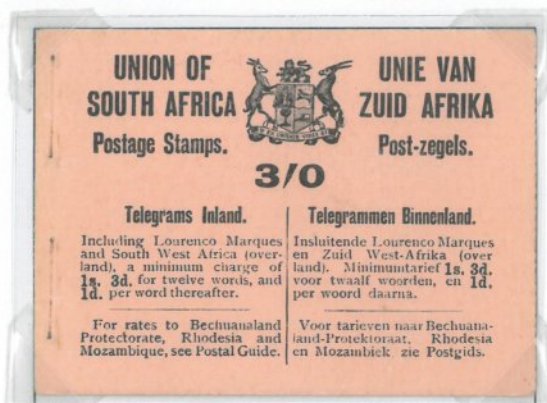
Proof for front and inside back covers



Proof for inside front and back covers with overprinted '2', hand written on back in pencil: "Stamp book covers o/ptd 2d. as shown appd May 4th. 1921"

Released Booklet 4a, 4 July 1921

Eight advertisements in English, four in Dutch, presented in actual order together with stamp panes of six. The South African Post Office reported that Messrs Lever Brothers, Durban, soap advertisements were printed in one million booklets for the 3s and 3s 6d booklets, costing them £1,000 for *ten advertisements per booklet*. *Sanitas Co. and Blyth & Platt also purchased a page each.*



Booklet 4a front cover



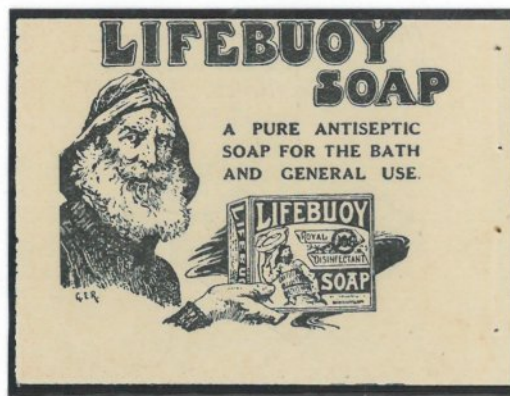
Booklet 4a inside front cover, surcharged '2'



p1: 1 1/2d pane



p3: Sunlight (English) (Lever Brothers)



p4: Lifebuoy (English) (Lever Brothers)



p5: 1½d pane

**ROYAL
VINOLIA
SHAVING
STICK**

THE IDEAL
SOAP FOR
A PERFECT
SHAVE.

p7: Royal Vinolia (English)
(Lever Brothers)

LUX
WON'T SHRINK
WOOLLENS.

p8: Lux (English)
(Lever Brothers)



p9: 1d pane

MONKEY BRAND

THE UNIVERSAL
CLEANSER AND
POLISHER.

Cleans and Polishes
Metals, Marble,
Cooking Utensils,
Glassware, etc.

p11: Monkey Brand (English)
(Lever Brothers)

"Sanitas"

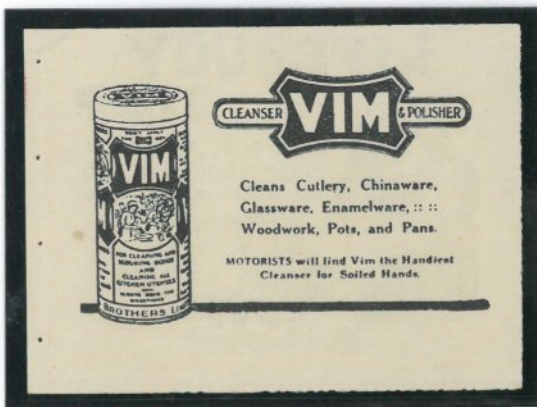
THE BEST :: ::
DISINFECTANT.

SANITAS FLUID - - In Bottles.
SANITAS POWDER - - In Tins.

p12: Sanitas (English)
(Sanitas Co)



p13: 1d pane



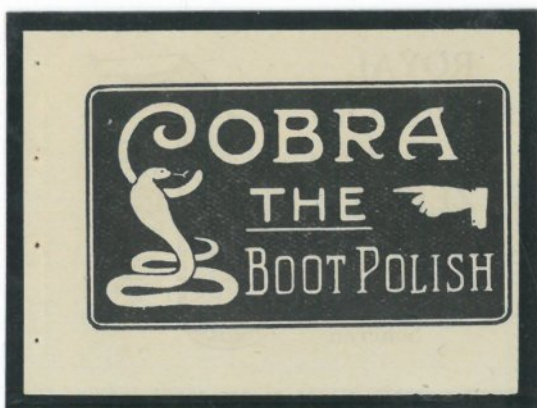
p15: Vim (English) (Lever Brothers)



p16: Lifebuoy (Dutch) (Lever Brothers)



p17: 1/2d pane



p19: Cobra (English)
(Blyth & Platt)



p20: Royal Vinolia (Dutch)
(Lever Brothers)



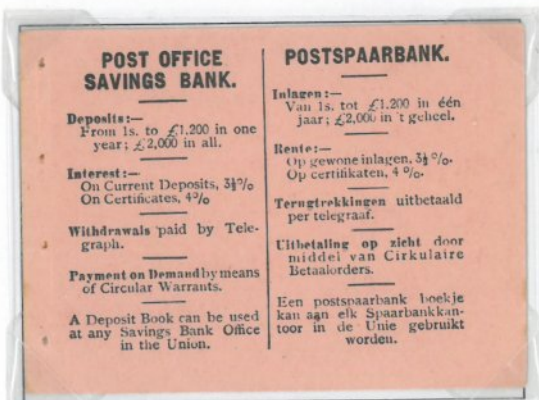
p21: ½d pane



p23: Lux (Dutch) (Lever Brothers)



p24: Sunlight (Dutch) (Lever Brothers)



Booklet 4a inside back cover



Booklet 4a outside back cover, surcharged '2'

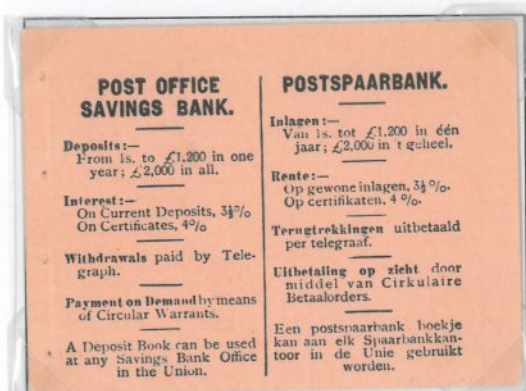
Released Booklet 4



Booklet 4 front cover



Booklet 4 inside front cover, surcharged '2d'



Booklet 4 inside back cover



Booklet 4 back cover, surcharged '2d'

Used Stamps

From 4 July 1921 to 31 December 1921, thus ± 6 months.

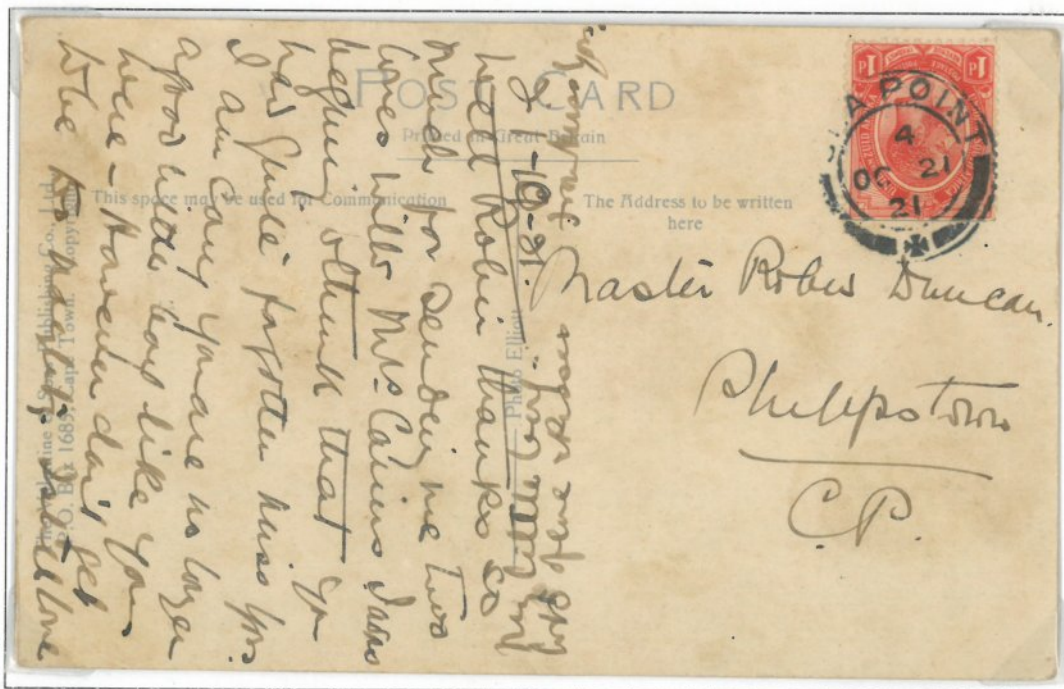


1/2d inv. wm., full pane, Booklet 4, Cape Town, counter 2, 12:30 on 24 Aug 1921



1 1/2d up. wm., col. 1/2, Booklet 4, Simonstown, 13:45, 1 Dec 1925

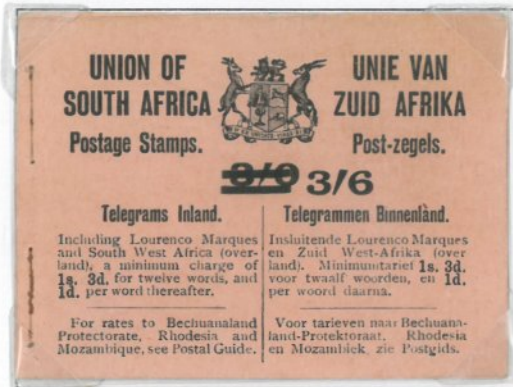
Usage on Post Card



1d from top of pane, col. 1 or 2, Booklet 4, post card, Sea Point to Philipstown, 21 Oct 1921

Booklet 5, 3/6 Salmon Pink, 1 January 1922

After the postal rate hike on 1 June 1921, the remaining 580,000 of Requisition No. 1291 booklets were issued with 2d stamps instead of 1½d stamps. This caused a surcharge 3s 6d on the cover price. Type 5 booklet covers have a rounded-edge font for the surcharge, while Type 5a covers have a squared-edge font. The same advertisements appear in the same order as in Booklet 4.



Booklet 5 front cover

INLAND POSTAGE.	BINNENLANDSE POSTTARIEF.
Letters 2d. per 1 oz.	Brieven 2d. per 1 oz.
Postcards 1d. each.	Postkaarten 1d. elk.
Newspapers ½d. for 4 oz.	Nieuwsbladen .. ½d. voor 4 oz.
Books, Commercial Papers and Samples } ½d. for 2oz.	Boeken, Handels-papieren en Monsters } ½d. voor 2oz.
Parcels 6d. per lb. Minimum charge 2d. for 4oz.	Pakketten 6d. per lb. Minimumtarief 2d. voor 4 oz.
Do. Agricultural rate, 3d. for 1½ lb., 1s. for 11 lb.	Do. Landbouw tarief, 3d. voor 1½ lb., 1s. voor 11 lb.

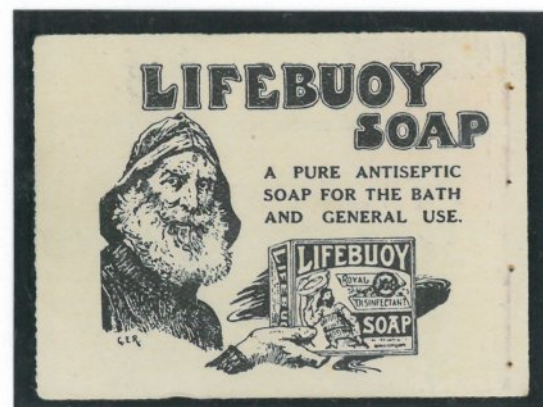
Booklet 5 inside front cover, surcharged '2d'



p1: 2d pane



p3: Sunlight (English) (Lever Brothers)



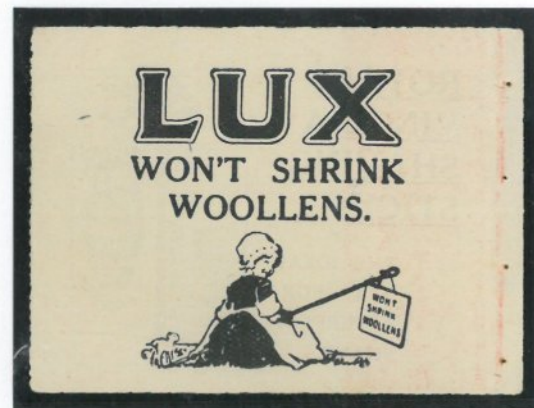
p4: Lifebuoy (English) (Lever Brothers)



p5: 2d pane



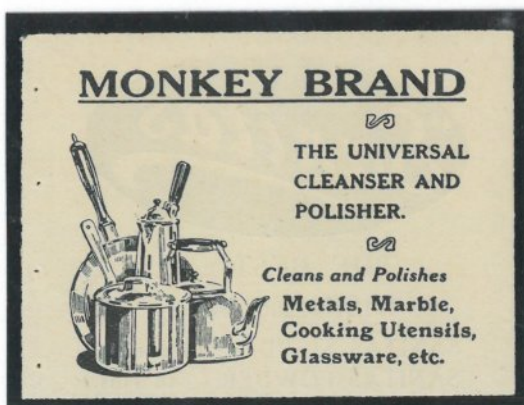
p7: Royal Vinolia (English)
(Lever Brothers)



p8: Lux (English)
(Lever Brothers)



p9: 1d pane



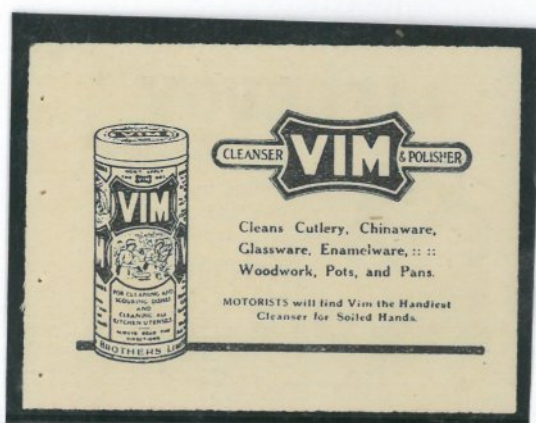
p11: Monkey Brand (English)
(Lever Brothers)



p12: Sanitas (English)
(Sanitas Co)



p13: 1d pane



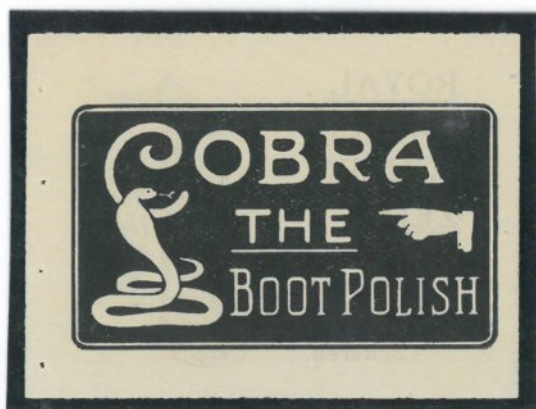
p15: Vim (English) (Lever Brothers)



p16: Lifebuoy (Dutch) (Lever Brothers)



p17: 1/2d pane



p19: Cobra (English)
(Blyth & Platt)



p20: Royal Vinolia (Dutch)
(Lever Brothers)



p21: 1/2d pane



p23: Lux (Dutch) (Lever Brothers)



p24: Sunlight (Dutch) (Lever Brothers)


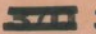
<p>POST OFFICE SAVINGS BANK.</p> <p>Deposits:— From 1s. to £1,200 in one year; £2,000 in all.</p> <p>Interest:— On Current Deposits, 3½% On Certificates, 4%</p> <p>Withdrawals paid by Telegraph.</p> <p>Payment on Demand by means of Circular Warrants.</p> <p>A Deposit Book can be used at any Savings Bank Office in the Union.</p>	<p>POSTSPAARBANK.</p> <p>Inlagen:— Van 1s. tot £1,200 in één jaar; £2,000 in t geheel.</p> <p>Rente:— Op gewone inlagen, 3½% Op certificaten, 4%</p> <p>Terugtrekkingen uitbetaald per telegraaf.</p> <p>Uitbetaling op recht door middel van Circulaire Betaalorders.</p> <p>Een postspaarbank boekje kan aan elk Spaarbankkantoor in de Unie gebruikt worden.</p>
--	--

Booklet 5 inside back cover

<p>OVERSEA POSTAGE.</p> <p>Letters. United Kingdom, Egypt, India, the Dominions & Colonies. 2d. per 1oz. Foreign Countries .. 2½d. per 1oz. Newspapers & Printed Matter All Countries ½d. for 2oz. Commercial Papers. All Countries ½d. for 2oz. With a minimum of 2½d. Sample Packets. All Countries ½d. for 2oz. With a minimum of 1d.</p> <p>For Parcel Rates, see Postal Guide.</p>	<p>BUITENLANDSE POSTTARIEF.</p> <p>Brieven. Verenigd Koninkrijk, Egypte, Indië, en de Koloniën .. 2d. per 1oz. Vreemde landen 2½d. per 1oz. Nieuwbladen en Drukwerk. Alle landen .. ½d. voor 2oz. Handelspapieren. Alle landen .. ½d. voor 2oz. Met minimum 2½d. Monsters. Alle landen .. ½d. voor 2oz. Met minimum 1d.</p> <p>Voor Pakkettarieven zie Postgids.</p>
--	---

Booklet 5 back cover, surcharged '2d'

Booklet 5a

UNION OF SOUTH AFRICA Postage Stamps.	 UNIE VAN ZUID AFRIKA Post-zegels.
 3/6	
Telegrams Inland.	Telegrammen Binnenland.
Including Lourenco Marques and South West Africa (overland), a minimum charge of 1s. 3d. for twelve words, and 1d. per word thereafter.	Insluitende Lourenco Marques en Zuid West-Afrika (overland). Minimumtarief 1s. 3d. voor twaalf woorden, en 1d. per woord daarna.
For rates to Bechuanaland Protectorate, Rhodesia and Mozambique, see Postal Guide.	Voor tarieven naar Bechuanaland-Protectoraat, Rhodesia en Mozambiek zie Postgids.

Booklet 5a front cover

INLAND POSTAGE.	BINNENLANDSE POSTTARIEF.
Letters 2d. per 1 oz.	Brieven 2d. per 1 oz.
Postcards 1d. each.	Postkaarten 1d. elk.
Newspapers ½d. for 4 oz.	Nieuwsbladen .. ½d. voor 4 oz.
Books, Commercial Papers and Samples } ½d. for 2oz.	Boeken, Handelspapieren en Monsters } ½d. voor 2oz.
Parcels 6d. per lb. Minimum charge 2d. for 4oz.	Pakketten 6d. per lb. Minimumtarief 2d. voor 4oz.
Do. Agricultural rate, 3d. for 1½ lb., 1s. for 11 lb.	Do. Landbouw tarief, 3d. voor 1½ lb., 1s. voor 11 lb.

Booklet 5a inside front cover, surcharged '2d'

POST OFFICE SAVINGS BANK.	POSTSPAARBANK.
Deposits: From 1s. to £1,200 in one year; £2,000 in all.	Inlagen: Van 1s. tot £1,200 in één jaar; £2,000 in t geheel.
Interest: On Current Deposits, 3½% On Certificates, 4%	Rente: Op gewone inlagen, 3½% Op certifikaten, 4%
Withdrawals paid by Telegraph.	Teruggrekingen uitbetaald per telegraaf.
Payment on Demand by means of Circular Warrants.	Uitbetaling op zicht door middel van Circulaire Betaalorders.
A Deposit Book can be used at any Savings Bank Office in the Union.	Een postspaarbank boekje kan aan elk Spaarbankkantoor in de Unie gebruikt worden.

Booklet 5a inside back cover

OVERSEA POSTAGE.	BUITENLANDSE POSTTARIEF.
Letters. United Kingdom, Egypt, India, the Dominions & Colonies. 2d. per 1 oz. Foreign Countries .. 2½d. per 4oz. Newspapers & Printed Matter All Countries ½d. for 2oz. Commercial Papers. All Countries ½d. for 2oz. With a minimum of 2½d. Sample Packets. All Countries ½d. for 2oz. With a minimum of 1d.	Brieven. Verenigd Koninkrijk, Egypte, Indië en de Koloniën . 2d. per 1oz. Vreemde landen 2½d. per 4oz. Nieuwsbladen en Drukwerk. Alle landen .. ½d. voor 2oz. Handelspapieren. Alle landen .. ½d. voor 2oz. Met minimum 2½d. Monsters. Alle landen .. ½d. voor 2oz. Met minimum 1d.
For Parcel Rates, see Postal Guide.	Voor Pakkettarieven zie Postgids.

Booklet 5a outside back cover, surcharged '2d'

Used Stamps



1d inv. wm. pane B or D, Booklet 5, cancelled
Mosheshsford, Eastern Cape, 12 Jan 1927



1d, up. wm., bottom of pane A or C, col.
2 and 3 or 8 and 9, Booklet 5, cancelled
Windhoek, SWA, 11:30 on 23 Jul 1922

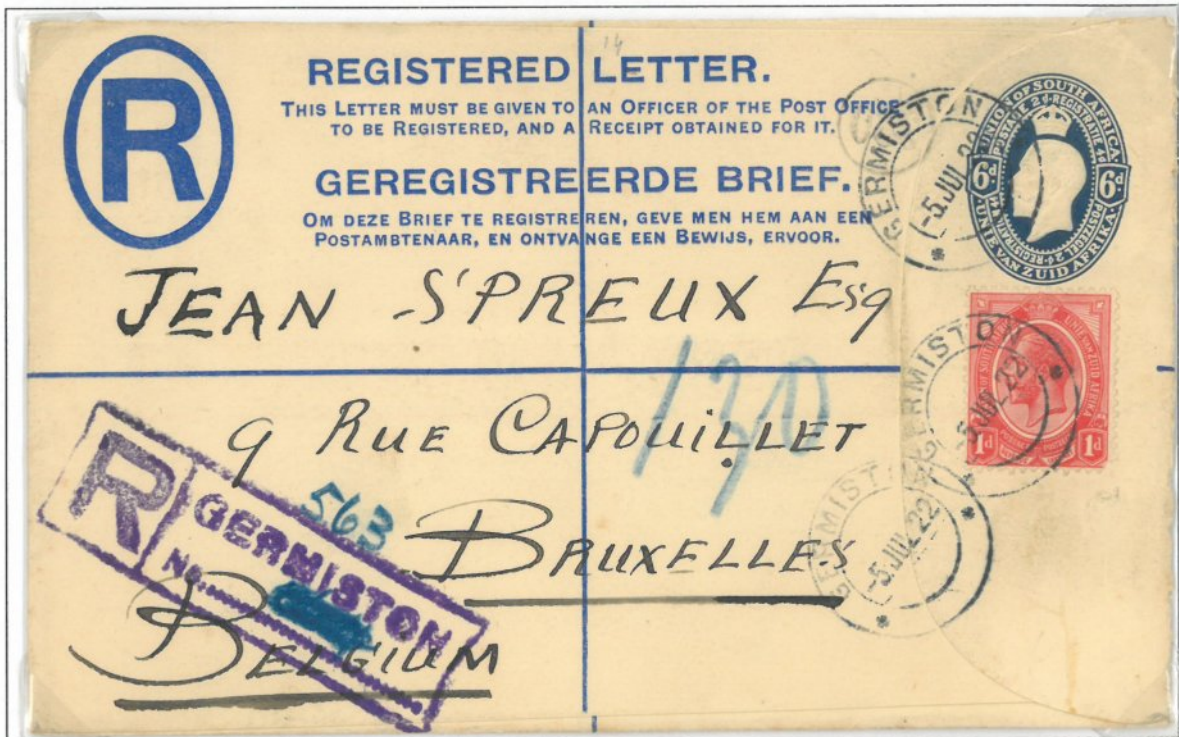


2d, inv. wm., top of pane C or D, col. 4
and 5 or 10 and 11, Booklet 5, cancelled?,
Johannesburg, morning of 18 Sep 1927?

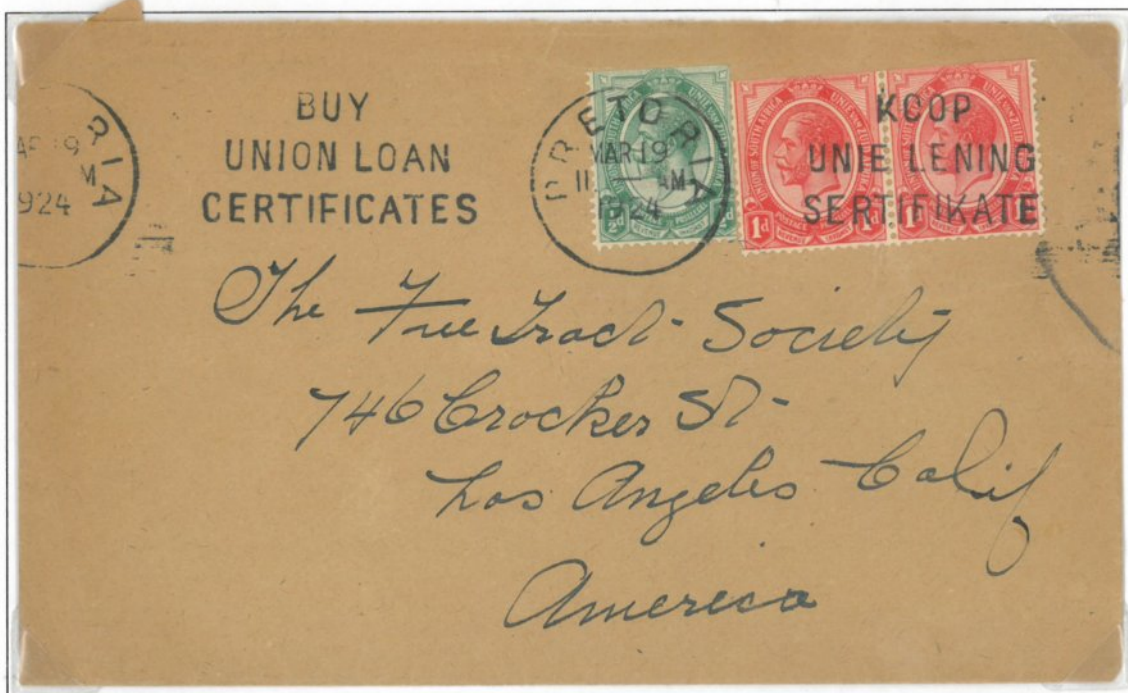
Usage on Cover



1/2d from bottom and 2d from top of pane, Booklet 5, underpaid 1/2d and taxed 2c, Cape Town to Los
Angeles, California, USA, 14:00, 8 Jun 1923



1d top of pane, Booklet 5, registered mail, Germiston to Brussels, Belgium, 5 Jul 1922



1/2d and two 1d top of pane, Booklet 5, machine cancelled Pretoria to Los Angeles, California, USA, 11:00, 19 Mar 1924

End of King's Heads Booklets, 1926

With the release of the second definitive series in 1926, the King's Heads booklets were also replaced with 2s 6d pictorial booklets, perf. 14 x 14¾, springbok wm.

The internal postal letter rate was reduced from 2d back to 1d on 1 Jan 1926.

Mint



½d Black and Green, inv. wmk., block of four from pane B or D, cols 5/6



1d Black and Red, inv. wmk., Booklet pane B or D, cols 4 to 6

Used Stamps



½d Black and Green, inv. wmk., Booklet pane B or D, col. 5 or 6



1d Black and Red, inv. wmk., Booklet pane B or D, col. 4