

# UNION OF S.A - BOOKLET NO. 20 – A STUDY OF ½d SPRINGBOK PANES

## INTRODUCTION

Booklet 20 appears 3 years after World War II in August of 1948 at a cost of 3/-. The front cover contains the Union Coat of Arms, Union of South Africa / Unie van Suid Afrika and postage Stamps / Posseels 3/-.

The main picture is of KIRCHHOFFS FOR SEEDS with the address.

It contained two panes each of the ½d, 1d and 1½d values. The sheets were printed with cylinders, Interior 88 and Exterior 81. The panes have various postal slogans in the top and bottom margins in English and Afrikaans.

Postal information and advertisements in Afrikaans and English, were inserted between the sheets and included a pane of four blue rouletted air mail labels. The ½d panes is from the same multipositive stamps as Issue 16A to Issue 18, Group 6, frame screened with upright watermark.

A total of 300 000 booklets were ordered that was printed by the Government Printer.

## AIM

This exhibit aims to show the different Panes 1 to 21 and the position on the sheet as well as explanatory notes of the printing of the booklet Panes.

## SCOPE

Showing the unique identification marks and advertisements on the Panes and varieties.

## TREATMENT

Exhibiting the booklet panes and the identification marks to plate the panes on the sheet, varieties and the perforation figure 8 that occur. My own study of the booklet panes resulting in the un – recorded varieties as shown with a yellow circle. Very difficult items to find shown with a red circle.

## INDEX

Introduction	Page 1
Explanatory notes on Booklet 20	Page 2
Booklet 20 panes	Page 6

## BIBLIOGRAPHY

J. van der Merwe – Own study.

Union 3s. Booklets by Dr. Alec Kaplan – The South African Philatelist December 1948.



## EXPLANATORY NOTES ON BOOKLET 20

Six slogans were used namely:

**Slogan 1:** Pack Parcels Properly – Verpak Pakkies Behoorlik

**Slogan 2:** Registreer Waardevolle briewe – Register Valuable Letters

**Slogan 3:** Post Early for Quick Delivery – Vroeg Gepos Beteken Vroeg Agelewer

**Slogan 4:** Air (Emblem) Mail – The Quickest Mail

**Slogan 5:** Lugpos (Embleem) Lugpos – Die Snelste Pos

**Slogan 6:** Address Letters Fully – Adresser Briewe Volledig

Panes cut from the righthand side of the sheet were not perforated through the righthand margin and, although some of the slogans are repeated, this perforation difference and the varieties of the slogans and stamps make it possible to reconstruct the 21 panes of each value in their original sheet form.

Numbers of the cylinders in the order of interior 88 and exterior 81.

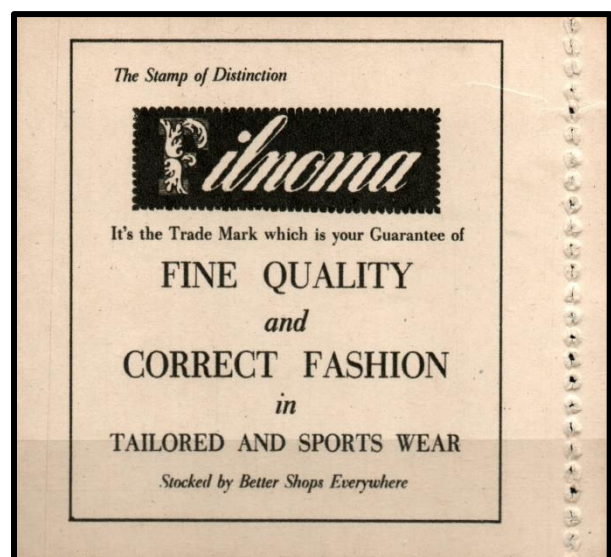
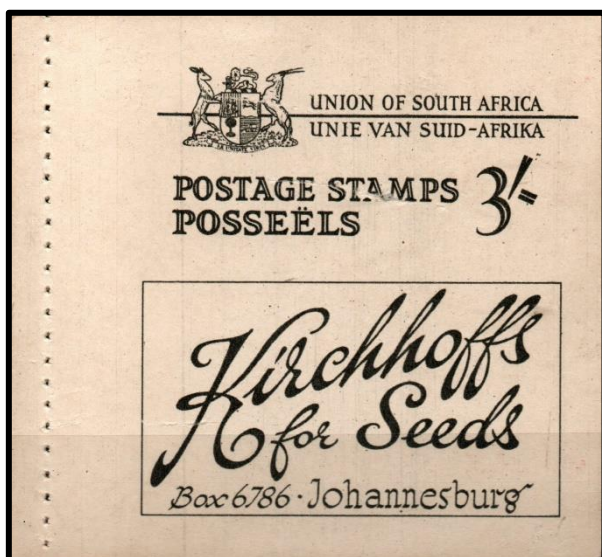
The interleaves and thin white card covers had postal information or advertisements printed in black on both sides, and each booklet included a pane of four rouletted air mail labels.

### Complete Exploded Booklet 20



### THE BOOKLET ADVERTISEMENTS

Front (Left) and back (Right) of the Booklet 20



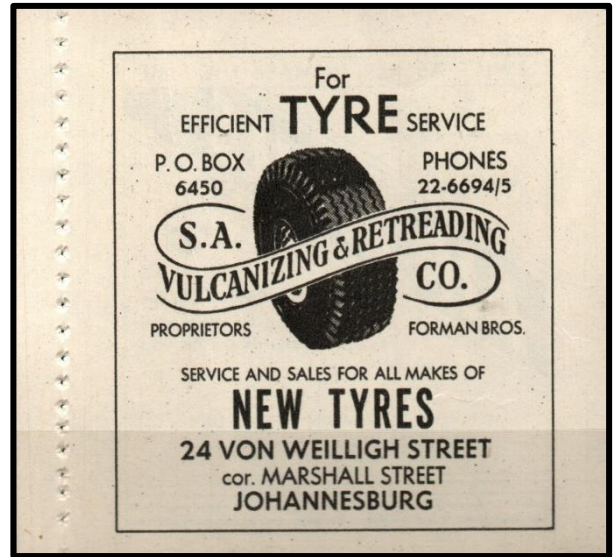
**THE BOOKLET ADVERTISEMENTS CONTINUE**

The interleaves and thin white card covers all had postal information or advertisements printed in black on both sides, and each booklet included a pane of four rouletted air mail labels.

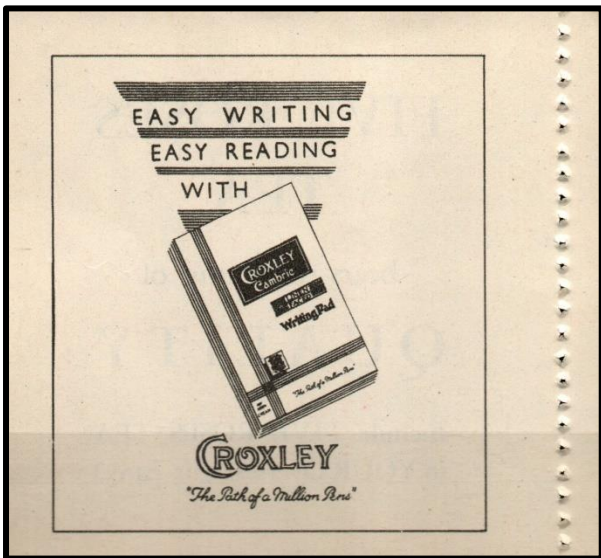
**MILLS CIGARETTES S.A.**



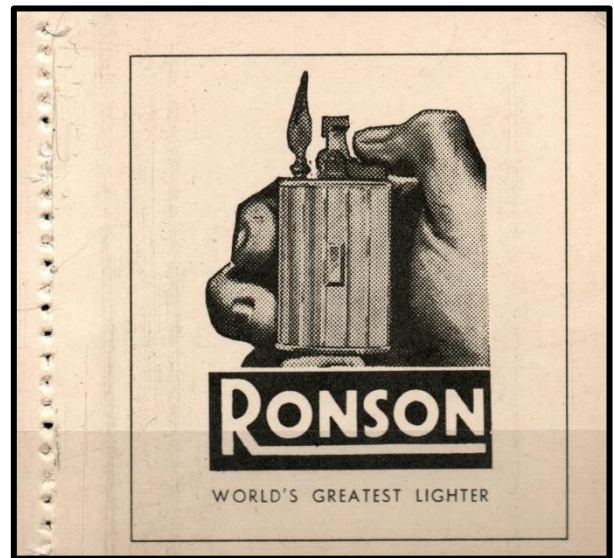
**VULCANIZING AND RETREADING CO.**



**CROXLEY**



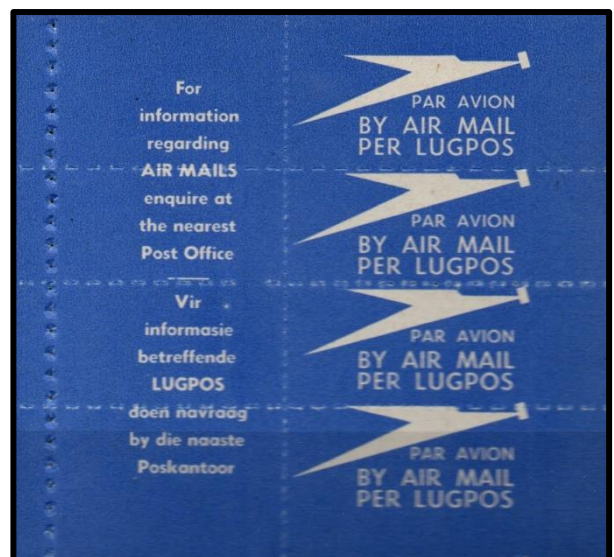
**RONSON LIGHTERS**



**FIVE ROSES TEA**



**AIRMAIL LABELS**



THE BOOKLET ADVERTISEMENTS CONTINUE

LUGPOS

TWEEMAAL SO VER IN HELFTE VAN DIE TYD

Plak 'n lugposetiket op u brief en pos dit in enige briewe-bus




Verenigde Koninkryk en Eire, 9d. per  $\frac{1}{2}$  ons vir briewe, 4 $\frac{1}{2}$ d. elk vir poskaarte en 6d. elk vir lugbriewe

VRA U POSMEESTER OM VERDERE BESONDERHEDE BETREFFENDE LUGPOS

POST OFFICE

Address your Telegrams *fully*



Adresseer u Telegramme *volledig*

GREYS



GREYS Original Styles for Smart Women



Perfect Fitting Trousers by GREYS



LETTER CARDS


No Enclosures Permitted Inlae Verbode

LETTER CARD BRIEF-KAART

for Economy & Convenience use

LETTER CARDS

Obtainable at all POST-OFFICES



2<sup>d</sup> each including postage

AIR MAILS

TWICE AS FAR IN HALF THE TIME

Put an Air Mail label on your letter and post it in any posting-box



United Kingdom and Eire, 9d. per  $\frac{1}{2}$  oz. for letters, 4 $\frac{1}{2}$ d. each for postcards and 6d. each for air letters

ASK YOUR POSTMASTER FOR FURTHER PARTICULARS REGARDING AIR MAILS

RATES OF POSTAGE

RATES OF POSTAGE.

For the Union of South Africa, Basutoland, Bechuanaland Protectorate, Swaziland and South West Africa.

LETTERS . . . . . 1 $\frac{1}{2}$ d. for the first oz., 1d. for each additional oz.

POSTCARDS . . . . . 1d. each

NEWSPAPERS . . . . . 1d. per 4 oz. per copy, limit of weight for each packet 1 lb.

PRINTED PAPERS . . . . . 1 $\frac{1}{2}$ d. per 2 oz.

COMMERCIAL PAPERS . . . . .

SAMPLE PACKETS . . . . . See Post Office Guide.

PARCELS . . . . . See Post Office Guide.

For Angola, French Equatorial Africa, French Cameroons, Belgian Congo, Mocambique, Nyasaland, Southern and Northern Rhodesia.

LETTERS . . . . . 1 $\frac{1}{2}$ d. per  $\frac{1}{2}$  oz.

POSTCARDS . . . . . 1 $\frac{1}{2}$ d. each

NEWSPAPERS . . . . . 1 $\frac{1}{2}$ d. per 4 oz. per copy, limit of weight for each packet 1 lb.

PRINTED PAPERS . . . . . 1 $\frac{1}{2}$ d. per 2 oz. with a minimum of 1d.

COMMERCIAL PAPERS . . . . .

SAMPLE PACKETS . . . . . See Post Office Guide.

Letters and Postcards for the Union, Basutoland, Bechuanaland Protectorate, Swaziland, South West Africa, Mocambique, Nyasaland, Northern and Southern Rhodesia are sent by air at the above rates when delivery will be expedited thereby. Blue air mail labels are not necessary.

OVERSEAS POSTAGE.

LETTERS : British Commonwealth, Protectorates and possessions (excluding territories enumerated above) 1 $\frac{1}{2}$ d. for the first  $\frac{1}{2}$  oz., 1d. for each additional  $\frac{1}{2}$  oz.

Foreign countries 3d. per first oz. 1 $\frac{1}{2}$ d. for each additional oz.

POSTCARDS : All countries (excluding Territories enumerated opposite) 1 $\frac{1}{2}$ d. each.

NEWSPAPERS AND PRINTED MATTER : All countries 1 $\frac{1}{2}$ d. per 2 oz.

COMMERCIAL PAPERS : All countries 1 $\frac{1}{2}$ d. per 2 oz. with a minimum of 3d.

SAMPLE PACKETS : All countries 1 $\frac{1}{2}$ d. per 2 oz. with a minimum of 1d.

PARCELS : See Post Office Guide.

Note.—Newspapers for Kenya, Uganda and Tanganyika—1 $\frac{1}{2}$ d. per 4 oz. limit of weight for each packet 1 lb.

Commercial papers for Kenya, Uganda and Tanganyika—no minimum charge of 3d.

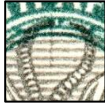
## EXPLANATORY NOTES ON BOOKLET 20 CONTINUE

Below a composite of the ½d booklet stamp sheet positioned for cutting. Each pane with the slogan in top and bottom margin that starts either with an Afrikaans or English stamp as shown. The top, left and bottom margins is perforated through. The right margin has one perforation hole.

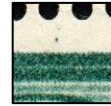
PACK PARCELS PROPERLY			REGISTREER WAARDEVOLLE BRIEWE			POST EARLY FOR QUICK DELIVERY			Perforated in top margin
A	1		A	2		A	3		
VERPAK PAKKIES BEHOORLIK			REGISTER VALUABLE LETTERS			VROEG GEPOS BETEKEN VROEG GELEWER			Cut lines
REGISTREER WAARDEVOLLE BRIEWE			POST EARLY FOR QUICK DELIVERY			AIR > MAIL			
E	4		E	5		E	6		
REGISTER VALUABLE LETTERS			VROEG GEPOS BETEKEN VROEG GELEWER			THE QUICKEST MAIL			
POST EARLY	FOR	QUICK DELIVERY	AIR	>	MAIL	LUGPOS	>	LUGPOS	One Perforation hole in right margin
A	7		A	8		A	9		
VROEG GEPOS	BETEKEN	VROEG GELEWER	THE QUICKEST MAIL			DIE SNELSTE POS			
AIR	>	MAIL	LUGPOS	>	LUGPOS	ADDRESS LETTERS FULLY			
E	10		E	11		E	12		
THE QUICKEST MAIL			DIE SNELSTE POS			ADRESSEER BRIEWE VOLLEDIG			
LUGPOS	>	LUGPOS	ADDRESS LETTERS FULLY			PACK PARCELS PROPERLY			Stitch Line
A	13		A	14		A	15		
DIE SNELSTE POS			ADRESSEER BRIEWE VOLLEDIG			VERPAK PAKKIES BEHOORLIK			
ADDRESS LETTERS FULLY			PACK PARCELS PROPERLY			REGISTREER WAARDEVOLLE BRIEWE			
E	16		E	17		E	18		
ADRESSEER BRIEWE VOLLEDIG			VERPAK PAKKIES BEHOORLIK			REGISTER VALUABLE LETTERS			
PACK PARCELS PROPERLY			REGISTREER WAARDEVOLLE BRIEWE			POST EARLY FOR QUICK DELIVERY			Perforated in bottom margin
A	19		A	20		A	21		
VERPAK PAKKIES BEHOORLIK			REGISTER VALUABLE LETTERS			VROEG GEPOS BETEKEN VROEG GELEWER			

THE PLATING OF THE BOOKLET 20 PANES

PANE 1 – Afrikaans stamp first and perforated through in the right margin.

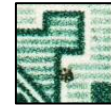


Stamp 2 - Vertical black line between horns



Stamp 3 - Green dot top of stamp

PANE 1 - VARIETY ●



Stamp 6 – Black dot below ornamental square

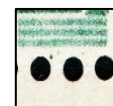
PANE 2 – Afrikaans stamp first and perforated through in the right margin.



Stamp 1 - Green spot between Buck's horns



Stamp 2 - White line bottom right corner



Stamp 3 - Green dots bottom right margin

THE PLATING OF THE BOOKLET 20 PANES – CONTINUES

PANE 3 – Afrikaans stamp first and one perforation hole in the right margin.



PANE 4 – English stamp first and perforated through in the right margin.



PANE 4 – VARIETY - REMNANT LETTERS IN THE BOTTOM MARGIN



THE PLATING OF THE BOOKLET 20 PANES – CONTINUES

PANE 5 – English stamp first and perforated through in the right margin.



PANE 5 - VARIETY ●



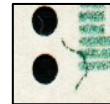
Stamp 4 – Green smudge left of value tablet

PANE 6 – English stamp first with one perforation hole in the right margin.



THE PLATING OF THE BOOKLET 20 PANES – CONTINUES

PANE 7 Afrikaans stamp first and perforated through in the right margin.



Stamp 3 - Curved hairline bottom left corner

PANE 7 – VARIETY ●



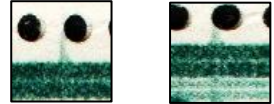
Green mark above "W" of afgelewer

PANE 8 - Afrikaans stamp first and perforated through in the right margin.



THE PLATING OF THE BOOKLET 20 PANES - CONTINUES

PANE 8 - VARIETY ●



Stamp 2 and 5 –  
Green smudges at the  
top right of the stamp

PANE 9 - Afrikaans stamp first with one perforation hole in the right margin.



PANE 10 – English stamp first and perforated through in the right margin.



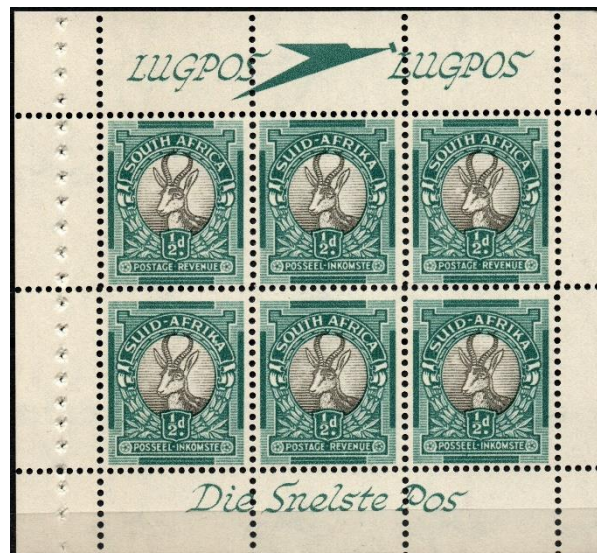
THE PLATING OF THE BOOKLET 20 PANES – CONTINUES

PANE 10 - VARIETY ●



Stamp 5 – Green dot below left bar

PANE 11 – English stamp first and perforated through in the right margin.



PANE 11 - VARIETY ●



Stamp 3 – Black dot right of Buck's left ear

THE PLATING OF THE BOOKLET 20 PANES – CONTINUES

PANE 12 – English stamp first with one perforation hole in the right margin.

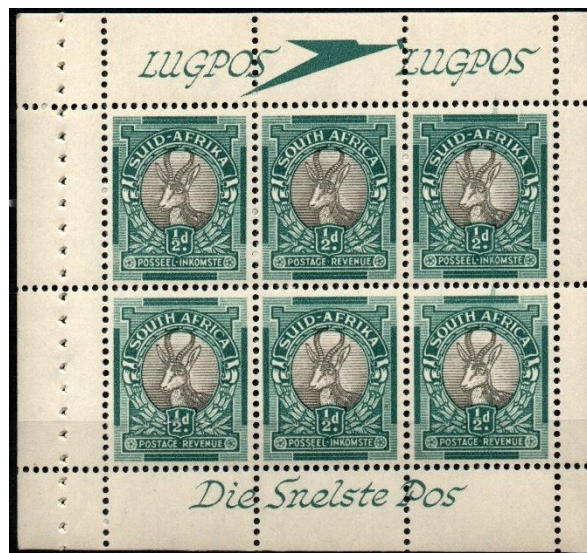


Figure 8  
Perforation Row 2

PANE 13 - Afrikaans stamp first and perforated through in the right margin.



PANE 13 - VARIETY ●



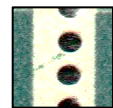
Stamp 3 and 6 –  
Green smudges at the  
top right of the stamp

THE PLATING OF THE BOOKLET 20 PANES – CONTINUES

PANE 14 - Afrikaans stamp first and perforated through in the right margin.



PANE 14 – VARIETY – LARGE PERORATION SHIFT UP ●



Green line between stamp 5 and stamp 6

PANE 15 - Afrikaans stamp first with one perforation hole in the right margin.

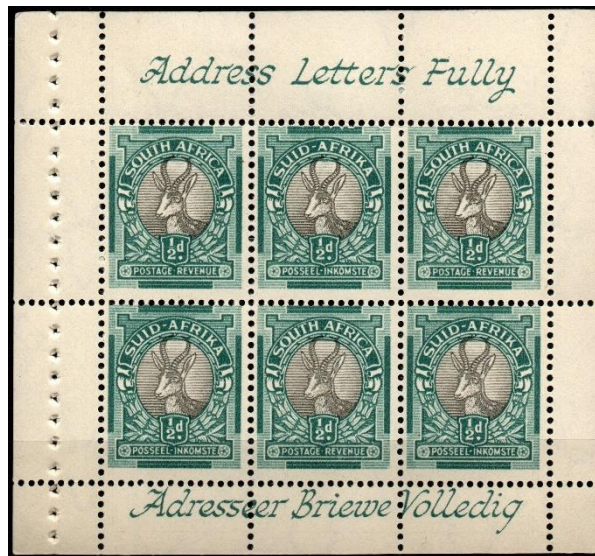


THE PLATING OF THE BOOKLET 20 PANES – CONTINUES

PANE 16 – English stamp first and perforated through in the right margin.



PANE 16 – VARIETY ●



Stamp 6 – Green dot  
left of bottom leaf

PANE 17 – English stamp first and perforated through in the right margin.



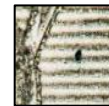
Stamp 4 - Green  
smudge bottom  
margin below Verpak

THE PLATING OF THE BOOKLET 20 PANES – CONTINUES

PANE 18 – English stamp first with one perforation hole in the right margin.



Remnant letters  
bottom margin



Stamp 5 - Green  
dot right of left ear

PANE 19 - Afrikaans stamp first and perforated through in the right margin.

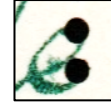


PANE 20 - Afrikaans stamp first and perforated through in the right margin.



THE PLATING OF THE BOOKLET 20 PANES – CONTINUES

PANE 20 - VARIETY ●



● Green smudge in "E" of Valuable in bottom margin

PANE 21 - Afrikaans stamp first with one perforation hole in the right margin.



PANE 21 - VARIETY - Green doctor's blade on the left margin ●

